





# DON RIMX







*Mrs. Rodeo, 40' x 60,' acrylic on concrete, Ogden, UT, 2021*



*Joe McQueen, 40' x 60,' acrylic on concrete, Ogden, UT, 2021*





*La Union*, 40' x 50', acrylic on concrete, Ogden, UT, 2021









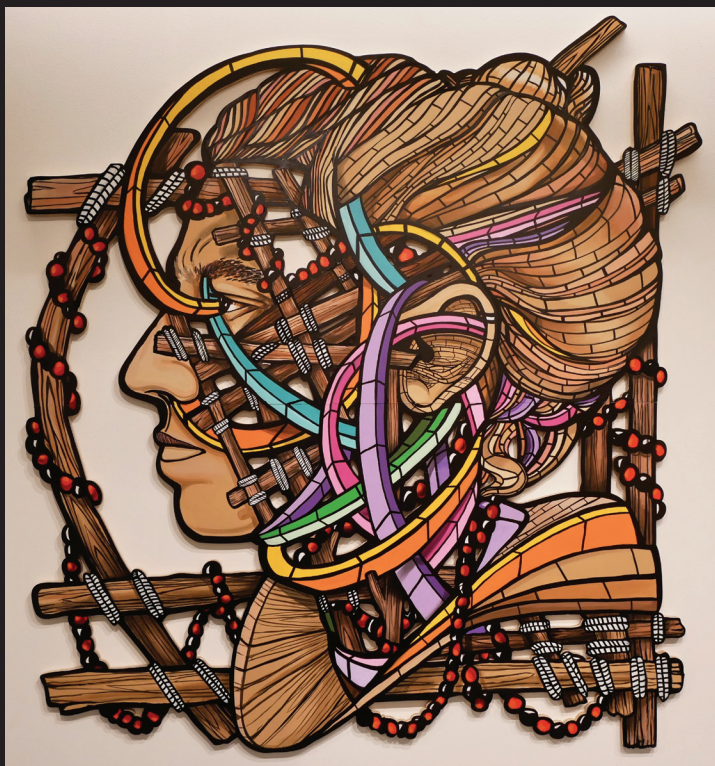
My body of work has been realized in public places, spaces of cultural value, schools, and private properties exposed to the eye of the general public. The inspiration behind my work are the different cultures of the world, the energy their traditions transmit, and the development of the urban landscape. My ideas aim to continue developing and constructing images that in some way carry a story, images that stimulate creativity to bring about a unique experience between the individual and each of the pieces, and building a bridge amongst cultures, people, and energies. My medium is a mixture of acrylic paint and spray paint.



## CREATING IN THE PUBLIC SPACE



*Aire*, 94" x 90," acrylic on laser cut wood, Orlando, FL, 2020



*Autoretrato*, 90" x 76," acrylic on laser cut wood, Orlando, FL, 2020

Creating in the public space is a progressive act. It's formulating the desire to do something and exposing it one hundred percent. It is the sharing of a transformative process from start to finish. It's a movement that stimulates sensitivity and touches everyone's curiosity. And it is one of the reasons I love living my passion.

Each project is unique. All are different in location, size, and points of view. There are great learning opportunities that, at times, offer challenging situations that one must manage along the way.

The relationship between the height of the viewer and scale of the mural is a design element I use to accentuate the power of the image, which in turn creates a greater public impact. On many occasions, the image and landscape sizes are combined to add more interest to the piece, thereby creating a unified relationship with the location.

I enjoy using spaces and incorporating murals within different landscapes. Walking and discovering new pieces makes me return to a specific place. These creations later become points of reference to inspire and stimulate continual experimentation of new things.

Murals, over time, become one with the surrounding landscape. They live amongst the community and collect the energy of those who pass by and contemplate them.





*Un Poco Mas Alla*, 24" x 20," acrylic on canvas, Orlando, FL, 2019

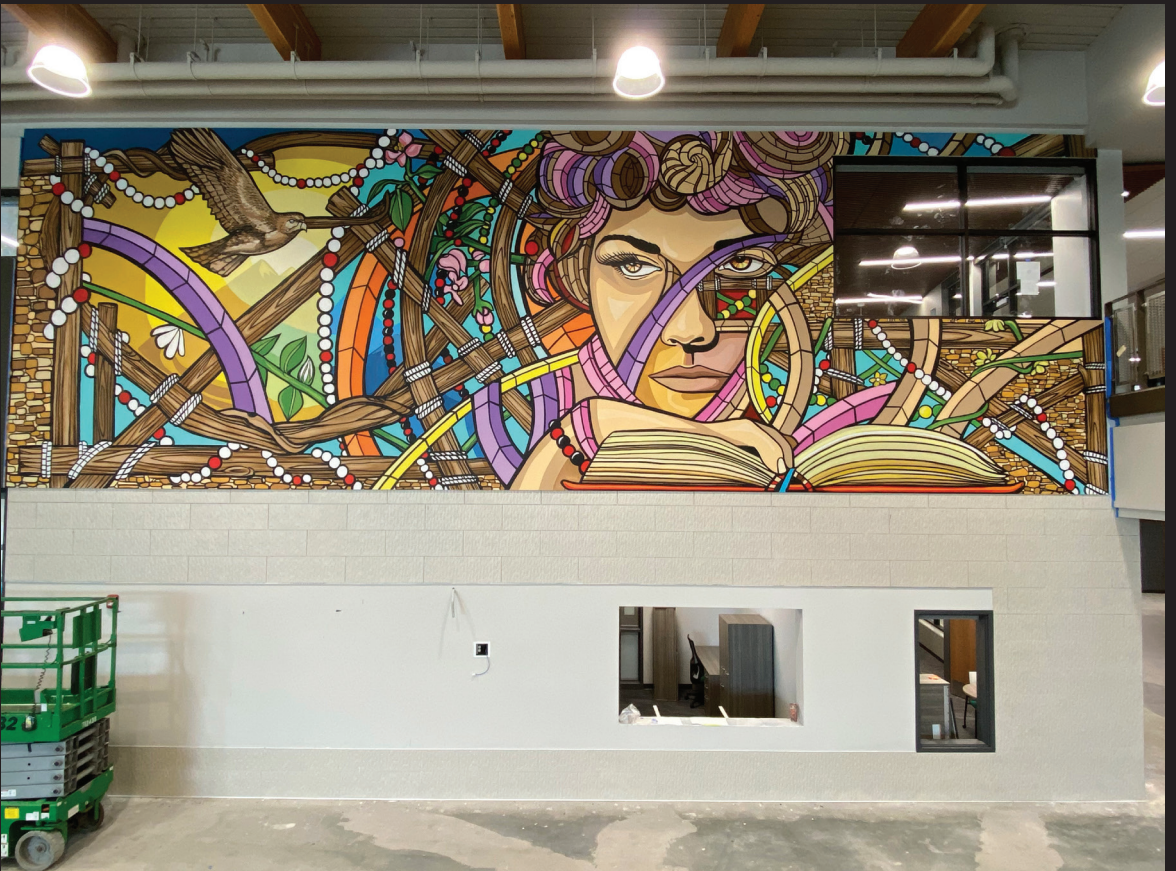


*La Luz por la Ventana*, 32" x 24," acrylic on canvas, Orlando, FL, 2019





*3/4 of Life = Water*, 23' x 36,' spray paint on drywall, New York, NY, 2014



*La Vision Guidada*, 15' x 40,' acrylic on birchwood, Spokane, WA, 2021





*Aroma A Café*, 8' x 12,' spray paint on wood, Miami Beach, FL, 2018





*Nelson Mandela, 30' x 80,' spray paint on brick, Grove Hall, Boston, 2017*



*Olor a Azucenas, El Perfume Del Barrio, 30' x 50,' spray paint on vinyl, Brooklyn, NY, 2019*





*Sangre Indigena*, 40' x 30,' spray paint on concrete, Roxbury, MA, 2020