



OUTDOOR ADVENTURE & WELCOME CENTER

For information regarding naming opportunities or other donation inquiries
for the new WSU Outdoor Adventure and Welcome Center, please contact:

Kyle Braithwaite
Weber State University
Development Director II
kylebraithwaite@weber.edu
801.626.6073 (w) 801.668.2703 (c)



CURRENT OUTDOOR PROGRAM

Weber State's natural location and proximity to what can easily be labeled an outdoor mecca, provides great opportunity for both students and the community to engage in endless adventure and activity.



Over the past decade, the increase in demand for outdoor access and education has propelled the WSU Outdoor Program into one of the premier programs in the state and country. Through WSU courses and certifications in areas such as AIARE Avalanche Training and AMGA Single Pitch Climbing Instruction, students and community are more prepared to safely explore the outdoors and facilitate opportunities for others. Additionally, certified guided tours, public equipment rentals, leadership courses, and outdoor permitting provide outdoor access for thousands of participants each year. All of this, while operating out of a 2,500 sq. ft. facility!

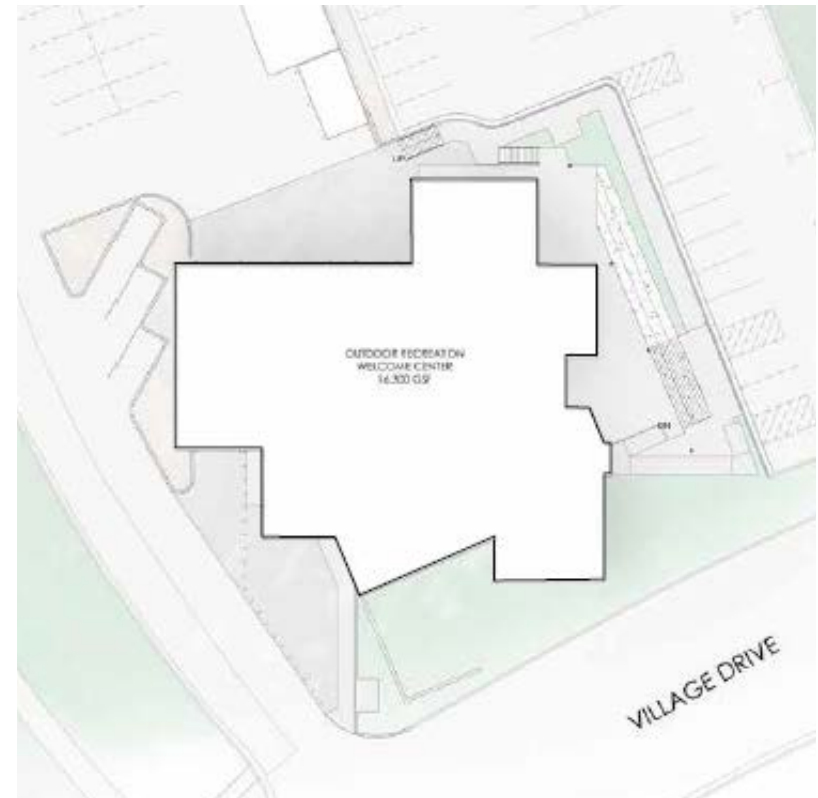


In 2008, the 3-year average Outdoor Program participation was 9,057 participants annually. That figure has grown to 19,901 participants annually as of 2018. In short, our current 2,500 sq. ft. location is insufficient to sustain future growth and we are in need of a state-of-the-art facility to serve the growing demand for outdoor adventure.



WE NEED MORE SPACE!

FUTURE BUILDING LOCATION





Outdoor Program Entrance





Welcome Center Entrance

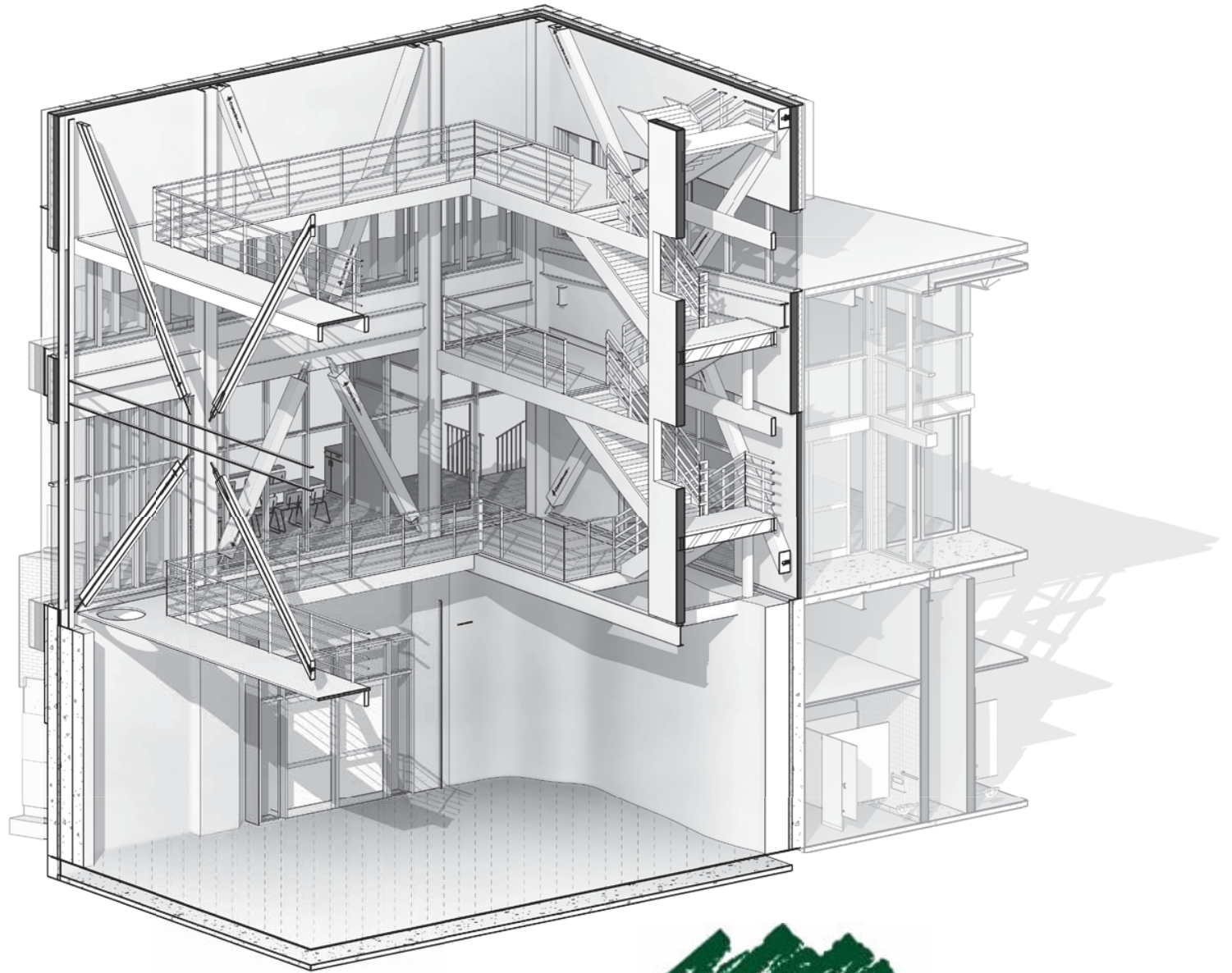




LEVEL 1
WEBER STATE UNIVERSIT



LEVEL 2
WEBER STATE UNIVERSITY



WEBER STATE UNIVERSITY
Outdoor Adventure & Welcome Center





WEBER STATE
UNIVERSITY

Student Affairs