



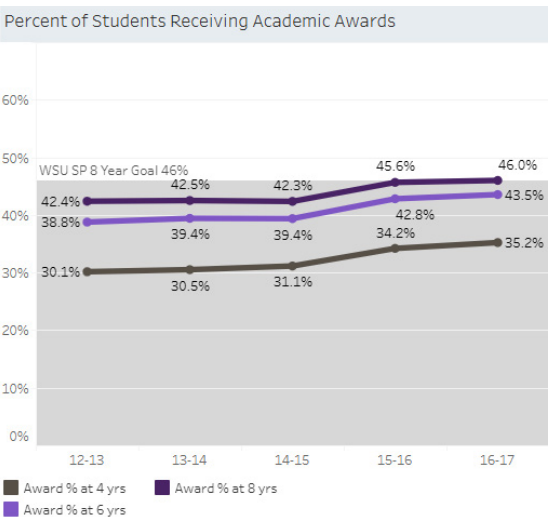
Data Pulse: Weber Hits a New High in Graduation and Persistence!

We are thrilled to highlight Weber State University's new all-time* graduation high. An impressive 46.0% of all students who started in the 2016-17 academic year have completed a certificate, associate, or bachelor's degree within 8 years, achieving our desired completion outcome for [Weber State's Strategic Plan 2.0](#).

Additionally, 47.1% of Fall 2018's entering First-Time, Full-Time students earned a bachelor's degree within 6 years, marking a 1.1% increase from the previous year. In terms of persistence, the percentage of Fall 2024 students who "Stopped Out" after the term hit an all-time* low of 14.7%.

Thanks to our dedicated faculty and staff who support student success at Weber State.

**Based on readily available data since Fall 2008.*



SCHEDULED TRAININGS

Open Registration Resources

Apr 23, 24 @ 10:30 a.m.
Register for course #190-53 through [Training Tracker](#)

ON-DEMAND TRAINING

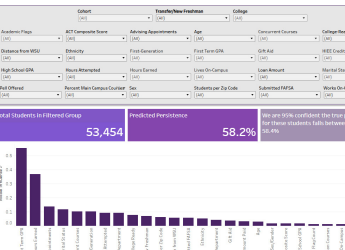
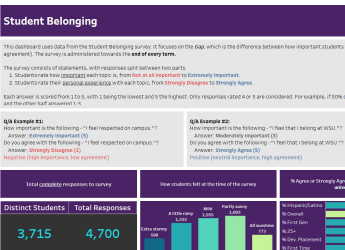
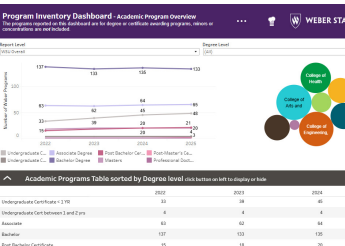
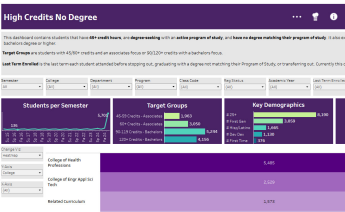
Intro to WSU Data

A brief intro [course](#) covering data policies, tools, and resources at Weber State

Don't see the training you need?
Email ossa@weber.edu to discuss custom training options for individuals and teams.

Data Tool Tip:
Have you gone too far with the filters in a Report Gallery dashboard? Use the undo, redo, or reset buttons at the top left to get back on track.

Undo Redo Reset



High Credit No Degree Dashboard (New Spring 2025)

This [dashboard](#) presents trends, aggregate insights, and detailed data on students with a declared associate or bachelor's degree who have earned 45/60+ or 90/120+ credits respectively, but have not yet attained their intended degrees.

Program Inventory Dashboard (New Spring 2025)

This [dashboard](#) displays details about active academic programs that lead to certificates or degrees at Weber State including the number and type of programs, and whether a program is eligible as a Utah System of Higher Education (USHE) High Yield program or a Perkins participating program.

Student Belonging Dashboard (New Fall 2024)

This [dashboard](#) visualizes results from the Student Belonging survey, a survey administered to enrolled students at the end of each semester, focusing on how students feel at WSU. You can filter the data on factors such as college/departments, age, ethnicity, and first-generation status to compare groups for targeted interventions.

Predicted Persistence Dashboard (New Fall 2024)

This [dashboard](#) showcases data from machine learning models designed to predict the impact of various student characteristics on likelihood to persist from Fall-to-Spring and Fall-to-Fall semesters. Explore factors influencing student persistence for all students and for specific student groups.

Department Updates



Celebrating Love Data Week

Weber State Data teams hosted the university's first-ever Love Data Week, February 10 to 14. Over 100 attendees explored data tools, resources, and strategies to support student retention, persistence, and belonging in daily, hands-on workshops.

For those who missed a session or wish to revisit material, presentation slides are available on the [Love Data Week site](#). For more information on upcoming data events and trainings, visit the [Data Trainings and Events site](#).

DataQuest: Uncover Hidden Data Gems and Win!



Embark on a data adventure! Faculty and staff are invited to search for a specific data point in our Report Gallery. Be one of the first three to submit the correct answer [here](#) to win a prize!

Which item from the Student Belonging Survey did Weber State students rate as the highest in overall importance?

Hint: Look at the [Student Belonging](#) Dashboard in the eWeber Report Gallery app.

Check out more data resources and tools at [weber.edu/data](#)

data@weber.edu