

Weber State University  
Revenue and Expenditure Summary by Month  
FY15

	July	August	Sept	Oct	Nov	Dec	Jan	Feb	March	April	May	June
<b>529433 - Index 268783 - Richards Blaine Art &amp; Design Schol 22100 - Visual Arts</b>												
Total Current Expense	0.00	0.00	(250.00)	0.00	0.00	0.00	(1,000.00)	0.00	0.00	0.00	0.00	0.00
76150 - Scholarships	0.00	0.00	0.00	0.00	0.00	0.00	0.00	0.00	0.00	0.00	2,600.00	0.00
Total Scholarships & Std Aid	0.00	0.00	0.00	0.00	0.00	0.00	0.00	0.00	0.00	0.00	2,600.00	0.00
Total Expense	0.00	0.00	(250.00)	0.00	0.00	0.00	(1,000.00)	0.00	0.00	0.00	2,600.00	0.00
<b>529655 - Index 268954 - Visual Art &amp; Design Alumni &amp; Friend 22100 - Visual Arts</b>												
55100 - Donations and Gifts	0.00	0.00	0.00	0.00	1,000.00	0.00	0.00	0.00	500.00	0.00	0.00	0.00
Total Revenue	0.00	0.00	0.00	0.00	1,000.00	0.00	0.00	0.00	500.00	0.00	0.00	0.00
Total Expense	0.00	0.00	0.00	0.00	0.00	0.00	0.00	0.00	0.00	0.00	0.00	0.00
<b>520704 - Index 280075 - Andelin, B Y Art Scholarship 22100 - Visual Arts</b>												
58115 - Interest on Investments	0.00	0.00	0.00	260.00	0.00	0.00	265.00	0.00	0.00	279.00	0.00	0.00
Total Revenue	0.00	0.00	0.00	260.00	0.00	0.00	265.00	0.00	0.00	279.00	0.00	0.00
76150 - Scholarships	0.00	443.00	0.00	0.00	0.00	0.00	443.00	0.00	0.00	0.00	0.00	0.00
Total Scholarships & Std Aid	0.00	443.00	0.00	0.00	0.00	0.00	443.00	0.00	0.00	0.00	0.00	0.00
Total Expense	0.00	443.00	0.00	0.00	0.00	0.00	443.00	0.00	0.00	0.00	0.00	0.00
<b>520245 - Index 280123 - Austad Mark &amp; Lola Visual Art Earn 22100 - Visual Arts</b>												
58115 - Interest on Investments	0.00	0.00	0.00	4,321.00	0.00	0.00	4,273.00	0.00	0.00	4,284.00	0.00	0.00
Total Revenue	0.00	0.00	0.00	4,321.00	0.00	0.00	4,273.00	0.00	0.00	4,284.00	0.00	0.00
62690 - Supplemental Pay	0.00	0.00	0.00	0.00	0.00	0.00	0.00	0.00	0.00	620.50	0.00	0.00
Total Hourly Wages	0.00	0.00	0.00	0.00	0.00	0.00	0.00	0.00	0.00	620.50	0.00	0.00
63015 - Workers Compensation Insur.	0.00	0.00	0.00	0.00	0.00	0.00	0.00	0.00	0.00	1.21	0.00	0.00
63025 - FICA	0.00	0.00	0.00	0.00	0.00	0.00	0.00	0.00	0.00	47.73	0.00	0.00
63035 - Retirement - TIAA-CREF	0.00	0.00	0.00	0.00	0.00	0.00	0.00	0.00	0.00	88.11	0.00	0.00
63065 - Unemployment	0.00	0.00	0.00	0.00	0.00	0.00	0.00	0.00	0.00	0.78	0.00	0.00
Total Staff Benefits	0.00	0.00	0.00	0.00	0.00	0.00	0.00	0.00	0.00	137.83	0.00	0.00

Weber State University  
Revenue and Expenditure Summary by Month  
FY15

	July	August	Sept	Oct	Nov	Dec	Jan	Feb	March	April	May	June
<b>520245 - Index 280123 - Austad Mark &amp; Lola Visual Art Earn 22100 - Visual Arts</b>												
72265 - Convocations and Lectures	0.00	0.00	0.00	0.00	0.00	0.00	0.00	0.00	0.00	1,000.00	0.00	0.00
72290 - Honorariums-1099	0.00	0.00	0.00	0.00	0.00	0.00	0.00	0.00	0.00	800.00	400.00	0.00
72485 - Freight and Ship/Lib	0.00	0.00	0.00	0.00	0.00	0.00	0.00	0.00	0.00	0.00	5,240.61	3,051.57
72720 - Reimbursements	0.00	0.00	0.00	0.00	0.00	0.00	0.00	0.00	0.00	200.00	0.00	0.00
<b>Total Current Expense</b>	<b>0.00</b>	<b>0.00</b>	<b>0.00</b>	<b>0.00</b>	<b>0.00</b>	<b>0.00</b>	<b>0.00</b>	<b>0.00</b>	<b>0.00</b>	<b>2,000.00</b>	<b>5,640.61</b>	<b>3,051.57</b>
<b>Total Expense</b>	<b>0.00</b>	<b>0.00</b>	<b>0.00</b>	<b>0.00</b>	<b>0.00</b>	<b>0.00</b>	<b>0.00</b>	<b>0.00</b>	<b>0.00</b>	<b>2,758.33</b>	<b>5,640.61</b>	<b>3,051.57</b>
<b>520711 - Index 280337 - Bryner, D Schol 22100 - Visual Arts</b>												
58115 - Interest on Investments	0.00	0.00	0.00	220.00	0.00	0.00	233.00	0.00	0.00	239.00	0.00	0.00
<b>Total Revenue</b>	<b>0.00</b>	<b>0.00</b>	<b>0.00</b>	<b>220.00</b>	<b>0.00</b>	<b>0.00</b>	<b>233.00</b>	<b>0.00</b>	<b>0.00</b>	<b>239.00</b>	<b>0.00</b>	<b>0.00</b>
76150 - Scholarships	0.00	157.50	0.00	0.00	0.00	0.00	157.50	0.00	0.00	0.00	0.00	0.00
<b>Total Scholarships &amp; Std Aid</b>	<b>0.00</b>	<b>157.50</b>	<b>0.00</b>	<b>0.00</b>	<b>0.00</b>	<b>0.00</b>	<b>157.50</b>	<b>0.00</b>	<b>0.00</b>	<b>0.00</b>	<b>0.00</b>	<b>0.00</b>
<b>Total Expense</b>	<b>0.00</b>	<b>157.50</b>	<b>0.00</b>	<b>0.00</b>	<b>0.00</b>	<b>0.00</b>	<b>157.50</b>	<b>0.00</b>	<b>0.00</b>	<b>0.00</b>	<b>0.00</b>	<b>0.00</b>
<b>520755 - Index 280580 - Dee Elizabeth Brown 22100 - Visual Arts</b>												
58115 - Interest on Investments	0.00	0.00	0.00	1,438.00	0.00	0.00	1,467.00	0.00	0.00	1,490.00	0.00	0.00
<b>Total Revenue</b>	<b>0.00</b>	<b>0.00</b>	<b>0.00</b>	<b>1,438.00</b>	<b>0.00</b>	<b>0.00</b>	<b>1,467.00</b>	<b>0.00</b>	<b>0.00</b>	<b>1,490.00</b>	<b>0.00</b>	<b>0.00</b>
76150 - Scholarships	0.00	2,779.00	0.00	0.00	0.00	0.00	2,779.00	0.00	0.00	0.00	0.00	0.00
<b>Total Scholarships &amp; Std Aid</b>	<b>0.00</b>	<b>2,779.00</b>	<b>0.00</b>	<b>0.00</b>	<b>0.00</b>	<b>0.00</b>	<b>2,779.00</b>	<b>0.00</b>	<b>0.00</b>	<b>0.00</b>	<b>0.00</b>	<b>0.00</b>
<b>Total Expense</b>	<b>0.00</b>	<b>2,779.00</b>	<b>0.00</b>	<b>0.00</b>	<b>0.00</b>	<b>0.00</b>	<b>2,779.00</b>	<b>0.00</b>	<b>0.00</b>	<b>0.00</b>	<b>0.00</b>	<b>0.00</b>
<b>520848 - Index 281590 - Douglas McFarland 22100 - Visual Arts</b>												
58115 - Interest on Investments	0.00	0.00	0.00	280.00	0.00	0.00	311.00	0.00	0.00	344.00	0.00	0.00
<b>Total Revenue</b>	<b>0.00</b>	<b>0.00</b>	<b>0.00</b>	<b>280.00</b>	<b>0.00</b>	<b>0.00</b>	<b>311.00</b>	<b>0.00</b>	<b>0.00</b>	<b>344.00</b>	<b>0.00</b>	<b>0.00</b>
76150 - Scholarships	0.00	559.50	0.00	0.00	0.00	0.00	559.50	0.00	0.00	0.00	0.00	0.00
<b>Total Scholarships &amp; Std Aid</b>	<b>0.00</b>	<b>559.50</b>	<b>0.00</b>	<b>0.00</b>	<b>0.00</b>	<b>0.00</b>	<b>559.50</b>	<b>0.00</b>	<b>0.00</b>	<b>0.00</b>	<b>0.00</b>	<b>0.00</b>

Weber State University  
 Revenue and Expenditure Summary by Month  
 FY15

	July	August	Sept	Oct	Nov	Dec	Jan	Feb	March	April	May	June
<b>520848 - Index 281590 - Douglas McFarland 22100 - Visual Arts</b>												
Total Expense	0.00	559.50	0.00	0.00	0.00	0.00	559.50	0.00	0.00	0.00	0.00	0.00
<b>520397 - Index 281661 - Morrin Visual Arts 22100 - Visual Arts</b>												
58115 - Interest on Investments	0.00	0.00	0.00	668.00	0.00	0.00	887.00	0.00	0.00	909.00	0.00	0.00
Total Revenue	0.00	0.00	0.00	668.00	0.00	0.00	887.00	0.00	0.00	909.00	0.00	0.00
Total Expense	0.00	0.00	0.00	0.00	0.00	0.00	0.00	0.00	0.00	0.00	0.00	0.00
<b>520913 - Index 281960 - Prout Lani Berlin 22100 - Visual Arts</b>												
58115 - Interest on Investments	0.00	0.00	0.00	134.00	0.00	0.00	137.00	0.00	0.00	139.00	0.00	0.00
Total Revenue	0.00	0.00	0.00	134.00	0.00	0.00	137.00	0.00	0.00	139.00	0.00	0.00
76150 - Scholarships	0.00	672.50	0.00	0.00	0.00	0.00	672.50	0.00	0.00	0.00	0.00	0.00
Total Scholarships & Std Aid	0.00	672.50	0.00	0.00	0.00	0.00	672.50	0.00	0.00	0.00	0.00	0.00
Total Expense	0.00	672.50	0.00	0.00	0.00	0.00	672.50	0.00	0.00	0.00	0.00	0.00
<b>520917 - Index 282010 - Rich Blanche Vis Arts 22100 - Visual Arts</b>												
58115 - Interest on Investments	0.00	0.00	0.00	668.00	0.00	0.00	691.00	0.00	0.00	711.00	0.00	0.00
Total Revenue	0.00	0.00	0.00	668.00	0.00	0.00	691.00	0.00	0.00	711.00	0.00	0.00
76150 - Scholarships	0.00	1,250.00	0.00	0.00	0.00	0.00	1,250.00	0.00	0.00	0.00	0.00	0.00
Total Scholarships & Std Aid	0.00	1,250.00	0.00	0.00	0.00	0.00	1,250.00	0.00	0.00	0.00	0.00	0.00
Total Expense	0.00	1,250.00	0.00	0.00	0.00	0.00	1,250.00	0.00	0.00	0.00	0.00	0.00
<b>520386 - Index 282420 - Visual Arts Technology 22100 - Visual Arts</b>												
58115 - Interest on Investments	0.00	0.00	0.00	1,141.00	0.00	0.00	1,158.00	0.00	0.00	1,180.00	0.00	0.00
Total Revenue	0.00	0.00	0.00	1,141.00	0.00	0.00	1,158.00	0.00	0.00	1,180.00	0.00	0.00
71310 - Software Reimb-Campus	0.00	0.00	0.00	110.00	0.00	0.00	0.00	0.00	0.00	0.00	0.00	0.00
72130 - Campus Stores Expense	0.00	2,576.99	0.00	0.00	0.00	0.00	0.00	0.00	0.00	0.00	0.00	0.00
72720 - Reimbursements	0.00	0.00	0.00	0.00	0.00	0.00	0.00	0.00	0.00	3,750.00	0.00	0.00

**Weber State University**  
**Revenue and Expenditure Summary by Month**  
**FY15**

	July	August	Sept	Oct	Nov	Dec	Jan	Feb	March	April	May	June
<b>520386 - Index 282420 - Visual Arts Technology 22100 - Visual Arts</b>												
Total Current Expense	0.00	2,578.99	0.00	110.00	0.00	0.00	0.00	0.00	0.00	3,750.00	0.00	0.00
74515 - Other Fuel and Power	0.00	0.00	6,354.00	0.00	0.00	0.00	0.00	0.00	0.00	0.00	0.00	0.00
Total Fuel and Power	0.00	0.00	6,354.00	0.00	0.00	0.00	0.00	0.00	0.00	0.00	0.00	0.00
Total Expense	0.00	2,578.99	6,354.00	110.00	0.00	0.00	0.00	0.00	0.00	3,750.00	0.00	0.00
<b>520970 - Index 282500 - Wilcox K Visual Arts 22100 - Visual Arts</b>												
58115 - Interest on Investments	0.00	0.00	0.00	251.00	0.00	0.00	257.00	0.00	0.00	260.00	0.00	0.00
Total Revenue	0.00	0.00	0.00	251.00	0.00	0.00	257.00	0.00	0.00	260.00	0.00	0.00
76150 - Scholarships	0.00	482.50	0.00	0.00	0.00	0.00	482.50	0.00	0.00	0.00	0.00	0.00
Total Scholarships & Std Aid	0.00	482.50	0.00	0.00	0.00	0.00	482.50	0.00	0.00	0.00	0.00	0.00
Total Expense	0.00	482.50	0.00	0.00	0.00	0.00	482.50	0.00	0.00	0.00	0.00	0.00
<b>520734 - Index 282690 - Collett Farrell 22100 - Visual Arts</b>												
58115 - Interest on Investments	0.00	0.00	0.00	191.00	0.00	0.00	196.00	0.00	0.00	202.00	0.00	0.00
Total Revenue	0.00	0.00	0.00	191.00	0.00	0.00	196.00	0.00	0.00	202.00	0.00	0.00
Total Expense	0.00	0.00	0.00	0.00	0.00	0.00	0.00	0.00	0.00	0.00	0.00	0.00
<b>520372 - Index 283060 - Utah Bic Art Col 22100 - Visual Arts</b>												
58115 - Interest on Investments	0.00	0.00	0.00	151.00	0.00	0.00	154.00	0.00	0.00	172.00	0.00	0.00
Total Revenue	0.00	0.00	0.00	151.00	0.00	0.00	154.00	0.00	0.00	172.00	0.00	0.00
Total Expense	0.00	0.00	0.00	0.00	0.00	0.00	0.00	0.00	0.00	0.00	0.00	0.00
<b>458000 - Index 510690 - Collett Farrell Visual Arts 22100 - Visual Arts</b>												
55100 - Donations and Gifts	0.00	0.00	0.00	0.00	0.00	0.00	1,000.00	0.00	0.00	0.00	0.00	0.00
Total Revenue	0.00	0.00	0.00	0.00	0.00	0.00	1,000.00	0.00	0.00	0.00	0.00	0.00
Total Expense	0.00	0.00	0.00	0.00	0.00	0.00	0.00	0.00	0.00	0.00	0.00	0.00

**Weber State University**  
**Revenue and Expenditure Summary by Month**  
**FY15**

	July	August	Sept	Oct	Nov	Dec	Jan	Feb	March	April	May	June
<b>450210 - Index 610075 - Andelin, B Y Art Endow 22100 - Visual Arts</b>												
55100 - Donations and Gifts	0.00	0.00	0.00	1,000.00	0.00	0.00	0.00	0.00	0.00	0.00	1,000.00	0.00
<b>Total Revenue</b>	<b>0.00</b>	<b>0.00</b>	<b>0.00</b>	<b>1,000.00</b>	<b>0.00</b>	<b>0.00</b>	<b>0.00</b>	<b>0.00</b>	<b>0.00</b>	<b>0.00</b>	<b>1,000.00</b>	<b>0.00</b>
<b>Total Expense</b>	<b>0.00</b>	<b>0.00</b>	<b>0.00</b>	<b>0.00</b>	<b>0.00</b>	<b>0.00</b>	<b>0.00</b>	<b>0.00</b>	<b>0.00</b>	<b>0.00</b>	<b>0.00</b>	<b>0.00</b>
<b>450760 - Index 610337 - Bryner, D Schol Endow 22100 - Visual Arts</b>												
55100 - Donations and Gifts	0.00	0.00	0.00	0.00	0.00	0.00	1,150.00	0.00	0.00	0.00	0.00	0.00
<b>Total Revenue</b>	<b>0.00</b>	<b>0.00</b>	<b>0.00</b>	<b>0.00</b>	<b>0.00</b>	<b>0.00</b>	<b>1,150.00</b>	<b>0.00</b>	<b>0.00</b>	<b>0.00</b>	<b>0.00</b>	<b>0.00</b>
<b>Total Expense</b>	<b>0.00</b>	<b>0.00</b>	<b>0.00</b>	<b>0.00</b>	<b>0.00</b>	<b>0.00</b>	<b>0.00</b>	<b>0.00</b>	<b>0.00</b>	<b>0.00</b>	<b>0.00</b>	<b>0.00</b>
<b>454190 - Index 612010 - Rich Blanche Vis Arts 22100 - Visual Arts</b>												
55100 - Donations and Gifts	0.00	0.00	0.00	0.00	0.00	1,000.00	0.00	0.00	0.00	0.00	0.00	0.00
<b>Total Revenue</b>	<b>0.00</b>	<b>0.00</b>	<b>0.00</b>	<b>0.00</b>	<b>0.00</b>	<b>1,000.00</b>	<b>0.00</b>	<b>0.00</b>	<b>0.00</b>	<b>0.00</b>	<b>0.00</b>	<b>0.00</b>
<b>Total Expense</b>	<b>0.00</b>	<b>0.00</b>	<b>0.00</b>	<b>0.00</b>	<b>0.00</b>	<b>0.00</b>	<b>0.00</b>	<b>0.00</b>	<b>0.00</b>	<b>0.00</b>	<b>0.00</b>	<b>0.00</b>

FY 2014 Reports begin on next page

**Weber State University**  
**Revenue and Expenditure Summary by Month**  
**FY14**

	July	August	Sept	Oct	Nov	Dec	Jan	Feb	March	April	May	June
<b>201010 - Index 120100 - General Fund 22100 - Visual Arts</b>												
61120 - Professor	34,516.30	34,516.30	34,516.30	34,516.30	34,516.30	34,516.30	34,516.30	34,516.30	34,516.30	34,516.30	34,516.30	34,516.30
61140 - Associate Professor	7,519.36	7,519.36	7,519.36	7,519.36	7,519.36	7,519.36	7,519.36	7,519.36	7,519.36	7,519.36	7,519.36	7,519.36
61150 - Assistant Professor	24,028.72	24,028.72	24,028.72	24,028.72	24,028.72	24,028.72	24,028.72	24,028.72	24,028.72	24,028.72	24,028.72	24,028.72
<b>Total Faculty Salaries</b>	<b>66,064.38</b>	<b>66,064.38</b>	<b>66,064.38</b>	<b>66,064.38</b>	<b>66,064.38</b>	<b>66,064.38</b>	<b>66,064.38</b>	<b>66,064.38</b>	<b>66,064.38</b>	<b>66,064.38</b>	<b>66,064.38</b>	<b>66,064.38</b>
61570 - Coordinator	2,405.72	2,405.72	2,405.72	2,405.72	2,405.72	2,405.72	0.00	0.00	0.00	0.00	0.00	0.00
61595 - Department Chair	2,723.68	2,723.68	2,723.68	2,723.68	2,723.68	2,723.68	2,723.68	2,723.68	2,723.68	2,723.68	2,723.68	2,723.68
61600 - Director	3,973.50	3,973.50	3,973.50	3,973.50	3,973.50	3,973.50	4,277.57	0.00	0.00	0.00	1,666.67	3,333.34
61670 - Manager	0.00	0.00	0.00	0.00	0.00	0.00	2,695.08	2,695.08	2,695.08	2,695.08	1,347.54	0.00
61730 - Specialist	2,793.06	2,793.06	2,793.06	2,793.06	2,793.06	2,793.06	3,103.40	3,103.40	3,103.40	3,103.40	3,103.40	3,103.40
61750 - Technician	2,317.34	2,317.34	2,317.34	2,317.34	2,317.34	2,317.34	2,317.34	2,317.34	2,317.34	2,317.34	2,317.34	2,317.34
61957 - Secretary	2,208.24	2,208.24	2,208.24	2,208.24	2,208.24	2,208.24	0.00	0.00	0.00	0.00	0.00	0.00
61965 - Specialist	0.00	0.00	0.00	0.00	0.00	0.00	2,458.24	2,458.24	2,458.24	2,458.24	2,458.24	2,458.24
<b>Total Staff Salaries</b>	<b>16,421.54</b>	<b>16,421.54</b>	<b>16,421.54</b>	<b>16,421.54</b>	<b>16,421.54</b>	<b>16,421.54</b>	<b>17,575.31</b>	<b>13,297.74</b>	<b>13,297.74</b>	<b>13,297.74</b>	<b>13,616.87</b>	<b>13,936.00</b>
62225 - Instructor	0.00	0.00	3,980.51	5,624.20	6,111.04	2,908.47	0.00	7,408.41	7,797.88	7,018.94	0.00	0.00
<b>Total Instructional Wages</b>	<b>0.00</b>	<b>0.00</b>	<b>3,980.51</b>	<b>5,624.20</b>	<b>6,111.04</b>	<b>2,908.47</b>	<b>0.00</b>	<b>7,408.41</b>	<b>7,797.88</b>	<b>7,018.94</b>	<b>0.00</b>	<b>0.00</b>
62515 - Hourly Student	1,132.45	1,323.00	945.76	873.38	957.20	1,273.30	1,001.13	963.47	1,055.12	827.66	903.69	1,360.80
62690 - Supplemental Pay	0.00	0.00	0.00	0.00	83.33	166.66	0.00	0.00	0.00	0.00	0.00	0.00
62805 - Moving Expense	1,757.90	0.00	0.00	0.00	0.00	0.00	0.00	0.00	0.00	0.00	0.00	0.00
<b>Total Hourly Wages</b>	<b>2,890.35</b>	<b>1,323.00</b>	<b>945.76</b>	<b>873.38</b>	<b>1,020.53</b>	<b>1,439.96</b>	<b>1,001.13</b>	<b>963.47</b>	<b>1,055.12</b>	<b>827.66</b>	<b>903.69</b>	<b>1,360.80</b>
63015 - Workers Compensation Insur.	173.14	177.90	186.07	195.52	197.38	189.86	174.60	194.88	196.89	192.15	167.11	174.97
63025 - FICA	6,296.80	6,288.10	6,511.61	6,631.60	6,677.19	6,421.04	6,300.29	6,521.92	6,560.02	6,491.09	6,025.20	6,120.46
63035 - Retirement - TIAA-CREF	11,057.76	11,057.76	11,346.11	11,302.61	11,371.74	11,194.02	11,145.01	10,865.40	10,920.70	10,810.10	10,537.61	10,537.62
63055 - Retirement - State Non-	1,013.22	1,013.22	1,013.22	1,013.22	1,031.51	1,049.80	1,131.69	1,395.20	1,395.20	1,395.20	1,201.76	1,271.84
63065 - Unemployment	49.46	49.46	51.85	52.83	53.17	51.30	50.17	52.04	162.26	215.96	199.19	199.98
63075 - Life Insurance	180.50	180.50	180.50	180.50	180.50	180.50	175.75	171.00	171.00	171.00	171.00	171.00
63085 - Disability Insurance	305.20	305.20	305.20	305.20	305.20	305.20	299.99	293.64	292.16	293.64	294.82	296.00
63105 - Health Insurance	13,644.16	14,283.70	13,210.61	13,644.06	13,644.06	13,644.06	13,659.99	13,659.96	13,461.72	13,659.96	13,659.96	13,659.96
63205 - Dental Insurance	915.64	915.64	878.40	897.02	897.02	897.02	891.58	891.58	879.55	891.58	891.58	891.58
<b>Total Staff Benefits</b>	<b>33,635.88</b>	<b>34,271.48</b>	<b>33,683.57</b>	<b>34,222.56</b>	<b>34,367.77</b>	<b>33,932.80</b>	<b>33,828.05</b>	<b>34,045.62</b>	<b>34,039.50</b>	<b>34,120.68</b>	<b>33,149.23</b>	<b>33,323.41</b>
71025 - Telephone - Long Distance	4.70	21.00	8.70	0.00	30.80	4.50	4.20	6.90	9.30	8.70	3.20	1.50

Weber State University  
Revenue and Expenditure Summary by Month  
FY14

	July	August	Sept	Oct	Nov	Dec	Jan	Feb	March	April	May	June
<b>201010 - Index 120100 - General Fund 22100 - Visual Arts</b>												
71050 - Telephone Equip Charges	619.50	618.85	619.50	0.00	1,238.00	619.50	619.50	619.50	619.50	619.50	619.50	619.50
71120 - Books and Pub-Other	0.00	0.00	0.00	108.49	0.00	(82.93)	0.00	0.00	0.00	0.00	0.00	0.00
71270 - Stock	0.00	0.00	0.00	0.00	18.11	(18.11)	0.00	0.00	0.00	0.00	0.00	0.00
71290 - FM Work Orders	4.70	0.00	0.00	0.00	0.00	0.00	4.70	0.00	0.00	0.00	0.00	0.00
71310 - Software Reimb-Campus	0.00	0.00	0.00	0.00	0.00	0.00	0.00	0.00	110.00	0.00	0.00	0.00
71315 - Data Processing Materials	0.00	0.00	0.00	162.34	(162.34)	0.00	0.00	0.00	0.00	0.00	0.00	0.00
71330 - Data Processing Service	0.00	0.00	0.00	49.00	0.00	(98.00)	0.00	0.00	0.00	0.00	0.00	0.00
71590 - Food-Classroom	0.00	0.00	0.00	0.00	229.54	(229.54)	0.00	0.00	0.00	0.00	0.00	0.00
71855 - Floral Arrangements	0.00	0.00	0.00	78.83	(78.83)	0.00	0.00	0.00	0.00	0.00	0.00	0.00
71865 - Luncheons/Receptions	0.00	0.00	0.00	0.00	13.13	(13.13)	0.00	0.00	0.00	0.00	0.00	0.00
71920 - Licenses and Permits	0.00	72.50	38.50	13.00	57.50	18.50	9.50	12.50	35.00	21.00	1.50	16.50
72035 - Minor Musical Equipment	0.00	0.00	0.00	21.33	0.00	(21.33)	0.00	0.00	0.00	0.00	0.00	0.00
72070 - Minor Art Objects	0.00	0.00	0.00	50.57	0.00	(50.57)	0.00	0.00	0.00	0.00	0.00	0.00
72105 - Office Supplies	0.00	0.00	0.00	104.84	(80.01)	(44.83)	0.00	0.00	0.00	0.00	0.00	0.00
72120 - Postage and Mailing	13.81	20.48	8.88	13.16	4.83	3.22	3.50	2.87	32.34	32.97	1.09	5.58
72130 - Campus Stores Expense	0.00	90.48	74.89	53.97	2,526.81	0.00	0.00	0.00	19.31	26.43	0.00	0.00
72155 - Copying Costs	203.00	203.00	0.00	335.95	23.49	1,026.45	182.88	0.00	204.55	954.01	262.36	171.13
72285 - Courier Services	0.00	0.00	0.00	194.21	0.00	(194.21)	0.00	0.00	0.00	0.00	0.00	0.00
72405 - Advert-Publicity	0.00	0.00	0.00	266.46	0.00	(266.46)	0.00	0.00	0.00	0.00	0.00	0.00
72495 - Gas/Oil/Grease/Etc	0.00	0.00	0.00	0.00	4.61	(4.61)	0.00	0.00	0.00	0.00	0.00	0.00
72543 - Employee Wildcards Expense	10.00	0.00	0.00	0.00	0.00	0.00	50.00	0.00	0.00	0.00	20.00	0.00
72605 - Photo Supp/Serv	0.00	0.00	0.00	274.93	0.00	(274.93)	0.00	0.00	0.00	0.00	0.00	0.00
72610 - Purchasing Card Exp	921.91	(718.87)	734.23	(1,354.31)	(308.81)	(1,320.12)	913.10	2,076.90	(158.19)	3,388.11	(1,143.01)	989.95
72720 - Reimbursements	(936.36)	(2,333.58)	0.00	0.00	(2,707.76)	0.00	0.00	0.00	0.00	0.00	(693.61)	(100.00)
<b>Total Current Expense</b>	<b>841.26</b>	<b>(2,026.14)</b>	<b>1,484.71</b>	<b>370.77</b>	<b>832.07</b>	<b>(946.60)</b>	<b>1,787.38</b>	<b>2,718.67</b>	<b>871.81</b>	<b>5,080.72</b>	<b>(928.97)</b>	<b>1,704.16</b>
75075 - In-St Trv-Auto	0.00	0.00	0.00	11.00	0.00	(22.00)	0.00	0.00	0.00	0.00	0.00	0.00
75100 - In-St Trv-Motorpool	0.00	0.00	0.00	0.00	0.00	0.00	35.00	0.00	0.00	0.00	0.00	0.00
75185 - Travel-Auto	0.00	0.00	0.00	174.76	2.00	(2.00)	0.00	134.24	46.00	0.00	0.00	0.00
75300 - P-Card Hotel	0.00	0.00	0.00	0.00	267.00	(534.00)	199.54	(199.54)	1,858.52	(311.51)	(178.00)	(725.51)
75325 - P-Card Airfare	0.00	0.00	0.00	0.00	0.00	0.00	1,359.00	(433.00)	(568.00)	0.00	(763.00)	0.00
75350 - P-Card Travel	763.52	53.78	(2,281.57)	4.00	20.24	0.00	0.00	0.00	0.00	0.00	0.00	0.00
<b>Total Travel</b>	<b>763.52</b>	<b>53.78</b>	<b>(2,281.57)</b>	<b>189.76</b>	<b>289.24</b>	<b>(558.00)</b>	<b>1,593.54</b>	<b>(498.30)</b>	<b>1,338.52</b>	<b>(311.51)</b>	<b>(941.00)</b>	<b>(725.51)</b>

Weber State University  
Revenue and Expenditure Summary by Month  
FY14

	July	August	Sept	Oct	Nov	Dec	Jan	Feb	March	April	May	June
<b>201010 - Index 120100 - General Fund 22100 - Visual Arts</b>												
Total Expense	120,616.93	116,108.04	120,298.90	123,786.59	125,086.57	119,263.55	121,849.79	123,989.99	124,464.95	126,078.61	111,863.19	115,663.24
<b>316389 - Index 150705 - Digital Media Printing Materials 22100 - Visual Arts</b>												
56090 - Sales-Art Supp-Ntax	0.00	80.00	540.00	1,160.00	610.00	435.00	120.00	105.00	100.00	970.00	10.00	0.00
56915 - Intra-Univ Charge	0.00	0.00	1.05	28.19	214.34	253.46	205.63	124.22	249.93	(479.47)	1,834.89	21.46
Total Revenue	0.00	80.00	541.05	1,188.19	824.34	688.46	325.63	229.22	349.93	490.53	1,844.89	21.46
71315 - Data Processing Materials	0.00	0.00	0.00	0.00	11.99	0.00	0.00	0.00	0.00	0.00	0.00	0.00
72130 - Campus Stores Expense	0.00	0.00	96.98	98.00	100.98	0.00	492.97	7.98	179.56	59.98	0.00	4.99
72610 - Purchasing Card Exp	0.00	1,025.75	55.81	0.00	2,483.57	479.92	(47.28)	1,238.51	15.99	175.39	(51.21)	633.78
Total Current Expense	0.00	1,025.75	152.79	98.00	2,596.54	479.92	445.69	1,246.49	195.55	235.37	(51.21)	638.77
79025 - Overhead	0.00	102.58	15.28	9.80	259.65	48.00	44.57	124.66	19.56	23.55	(5.13)	63.88
Total Overhead	0.00	102.58	15.28	9.80	259.65	48.00	44.57	124.66	19.56	23.55	(5.13)	63.88
Total Expense	0.00	1,128.33	168.07	107.80	2,856.19	527.92	490.26	1,371.15	215.11	258.92	(56.34)	702.65
<b>316959 - Index 150934 - 2D Design 22100 - Visual Arts</b>												
52675 - Lab Fee-No 1	0.00	0.00	0.00	0.00	3,020.00	120.00	(264.00)	20.00	380.00	3,100.00	304.00	420.00
Total Revenue	0.00	0.00	0.00	0.00	3,020.00	120.00	(264.00)	20.00	380.00	3,100.00	304.00	420.00
71605 - Lab Supplies	0.00	0.00	0.00	0.00	0.00	0.00	505.51	0.00	0.00	0.00	0.00	0.00
72130 - Campus Stores Expense	0.00	0.00	0.00	0.00	0.00	0.00	0.00	0.00	0.00	0.00	0.00	22.27
72600 - Petty Cash Expenditure	0.00	0.00	0.00	0.00	0.00	0.00	0.00	0.00	0.00	0.00	0.00	76.28
Total Current Expense	0.00	0.00	0.00	0.00	0.00	0.00	505.51	0.00	0.00	0.00	0.00	76.28
79025 - Overhead	0.00	0.00	0.00	0.00	0.00	0.00	50.55	0.00	0.00	0.00	0.00	7.63
Total Overhead	0.00	0.00	0.00	0.00	0.00	0.00	50.55	0.00	0.00	0.00	0.00	7.63
Total Expense	0.00	0.00	0.00	0.00	0.00	0.00	556.06	0.00	0.00	0.00	0.00	83.91
<b>316603 - Index 151003 - Digital Media Lab Long Term OH 22100 - Visual Arts</b>												
52675 - Lab Fee-No 1	1,200.40	(1,155.00)	(124.00)	4.20	18,629.50	763.50	(926.10)	49.00	2,102.60	18,720.00	2,036.10	1,002.38



**Weber State University**  
**Revenue and Expenditure Summary by Month**  
**FY14**

	July	August	Sept	Oct	Nov	Dec	Jan	Feb	March	April	May	June
<b>316603 - Index 151003 - Digital Media Lab Long Term OH 22100 - Visual Arts</b>												
<b>Total Revenue</b>	1,200.40	(1,155.00)	(124.00)	4.20	18,629.50	763.50	(926.10)	49.00	2,102.60	18,720.00	2,036.10	1,002.38
62515 - Hourly Student	0.00	0.00	403.04	950.24	794.24	712.80	532.57	767.94	524.83	757.73	183.68	0.00
<b>Total Hourly Wages</b>	0.00	0.00	403.04	950.24	794.24	712.80	532.57	767.94	524.83	757.73	183.68	0.00
63015 - Workers Compensation Insur.	0.00	0.00	0.61	1.43	1.20	1.07	0.81	1.16	0.79	1.15	0.27	0.00
<b>Total Staff Benefits</b>	0.00	0.00	0.61	1.43	1.20	1.07	0.81	1.16	0.79	1.15	0.27	0.00
71305 - Data Processing Software	0.00	0.00	0.00	0.00	0.00	0.00	0.00	0.00	0.00	0.00	51.21	0.00
71315 - Data Processing Materials	0.00	0.00	0.00	0.00	162.34	0.00	0.00	0.00	0.00	0.00	0.00	0.00
71595 - Instruct Supply-Other	0.00	0.00	0.00	0.00	0.00	0.00	0.00	0.00	0.00	175.80	0.00	0.00
72105 - Office Supplies	0.00	0.00	0.00	0.00	0.00	0.00	0.00	0.00	9.99	0.00	0.00	0.00
72130 - Campus Stores Expense	0.00	0.00	0.00	0.00	0.00	0.00	58.99	158.00	79.00	0.00	0.00	0.00
72610 - Purchasing Card Exp	429.99	0.00	0.00	0.00	0.00	0.00	0.00	0.00	0.00	0.00	0.00	0.00
72720 - Reimbursements	0.00	0.00	0.00	0.00	0.00	0.00	0.00	0.00	0.00	3,434.97	0.00	0.00
<b>Total Current Expense</b>	429.99	0.00	0.00	0.00	162.34	0.00	58.99	158.00	88.99	3,610.77	51.21	0.00
75300 - Pcard Hotel	0.00	0.00	0.00	0.00	0.00	0.00	0.00	0.00	0.00	0.00	0.00	500.00
<b>Total Travel</b>	0.00	0.00	0.00	0.00	0.00	0.00	0.00	0.00	0.00	0.00	0.00	500.00
77130 - Instr Equipment	0.00	0.00	0.00	0.00	299.99	4,195.00	0.00	0.00	0.00	0.00	0.00	0.00
<b>Total Capital Outlay</b>	0.00	0.00	0.00	0.00	299.99	4,195.00	0.00	0.00	0.00	0.00	0.00	0.00
79025 - Overhead	43.00	0.00	40.37	95.17	95.78	520.89	59.24	92.72	61.46	93.47	23.53	50.00
<b>Total Overhead</b>	43.00	0.00	40.37	95.17	95.78	520.89	59.24	92.72	61.46	93.47	23.53	50.00
<b>Total Expense</b>	472.99	0.00	444.02	1,046.84	1,353.55	5,429.76	651.61	1,019.82	676.07	4,463.12	258.69	550.00
<b>316606 - Index 151006 - Public Art OH 22100 - Visual Arts</b>												
52675 - Lab Fee-No 1	(5.00)	5.00	(4.50)	0.00	60.00	0.00	(9.00)	0.00	0.00	45.00	0.00	0.00
<b>Total Revenue</b>	(5.00)	5.00	(4.50)	0.00	60.00	0.00	(9.00)	0.00	0.00	45.00	0.00	0.00
77120 - Classroom Furniture	0.00	0.00	0.00	1,086.86	0.00	0.00	0.00	0.00	0.00	0.00	0.00	0.00
<b>Total Capital Outlay</b>	0.00	0.00	0.00	1,086.86	0.00	0.00	0.00	0.00	0.00	0.00	0.00	0.00

Weber State University  
Revenue and Expenditure Summary by Month  
FY14

	July	August	Sept	Oct	Nov	Dec	Jan	Feb	March	April	May	June
<b>316806 - Index 151006 - Public Art OH 22100 - Visual Arts</b>												
79025 - Overhead	0.00	0.00	0.00	108.89	0.00	0.00	0.00	0.00	0.00	0.00	0.00	0.00
<b>Total Overhead</b>	<b>0.00</b>	<b>0.00</b>	<b>0.00</b>	<b>108.89</b>	<b>0.00</b>	<b>0.00</b>	<b>0.00</b>	<b>0.00</b>	<b>0.00</b>	<b>0.00</b>	<b>0.00</b>	<b>0.00</b>
<b>Total Expense</b>	<b>0.00</b>	<b>0.00</b>	<b>0.00</b>	<b>1,196.55</b>	<b>0.00</b>	<b>0.00</b>	<b>0.00</b>	<b>0.00</b>	<b>0.00</b>	<b>0.00</b>	<b>0.00</b>	<b>0.00</b>

<b>316808 - Index 151010 - Figure Drawing Lab-I OH 22100 - Visual Arts</b>												
52675 - Lab Fee-No 1	0.00	(246.00)	246.00	0.00	0.00	82.00	0.00	0.00	0.00	900.00	100.00	(100.00)
<b>Total Revenue</b>	<b>0.00</b>	<b>(246.00)</b>	<b>246.00</b>	<b>0.00</b>	<b>0.00</b>	<b>82.00</b>	<b>0.00</b>	<b>0.00</b>	<b>0.00</b>	<b>900.00</b>	<b>100.00</b>	<b>(100.00)</b>
62515 - Hourly Student	0.00	0.00	153.15	201.90	0.00	0.00	0.00	0.00	0.00	0.00	0.00	0.00
62640 - Other Hourly Wages	0.00	0.15	0.00	0.00	0.00	0.00	0.00	0.00	0.00	0.00	0.00	0.00
<b>Total Hourly Wages</b>	<b>0.00</b>	<b>0.15</b>	<b>153.15</b>	<b>201.90</b>	<b>0.00</b>	<b>0.00</b>	<b>0.00</b>	<b>0.00</b>	<b>0.00</b>	<b>0.00</b>	<b>0.00</b>	<b>0.00</b>
63015 - Workers Compensation Insur.	0.00	0.00	0.23	0.31	0.00	0.00	0.00	0.00	0.00	0.00	0.00	0.00
63025 - FICA	0.00	0.01	11.71	15.44	0.00	0.00	0.00	0.00	0.00	0.00	0.00	0.00
<b>Total Staff Benefits</b>	<b>0.00</b>	<b>0.01</b>	<b>11.94</b>	<b>15.75</b>	<b>0.00</b>	<b>0.00</b>	<b>0.00</b>	<b>0.00</b>	<b>0.00</b>	<b>0.00</b>	<b>0.00</b>	<b>0.00</b>
79025 - Overhead	0.00	0.02	16.51	21.77	0.00	0.00	0.00	0.00	0.00	0.00	0.00	0.00
<b>Total Overhead</b>	<b>0.00</b>	<b>0.02</b>	<b>16.51</b>	<b>21.77</b>	<b>0.00</b>	<b>0.00</b>	<b>0.00</b>	<b>0.00</b>	<b>0.00</b>	<b>0.00</b>	<b>0.00</b>	<b>0.00</b>
<b>Total Expense</b>	<b>0.00</b>	<b>0.18</b>	<b>181.60</b>	<b>239.42</b>	<b>0.00</b>	<b>0.00</b>	<b>0.00</b>	<b>0.00</b>	<b>0.00</b>	<b>0.00</b>	<b>0.00</b>	<b>0.00</b>

<b>316809 - Index 151017 - Art Methods Lab OH 22100 - Visual Arts</b>												
52675 - Lab Fee-No 1	(285.00)	(475.00)	(76.00)	0.00	475.00	95.00	0.00	0.00	0.00	855.00	380.00	0.00
<b>Total Revenue</b>	<b>(285.00)</b>	<b>(475.00)</b>	<b>(76.00)</b>	<b>0.00</b>	<b>475.00</b>	<b>95.00</b>	<b>0.00</b>	<b>0.00</b>	<b>0.00</b>	<b>855.00</b>	<b>380.00</b>	<b>0.00</b>
72130 - Campus Stores Expense	0.00	0.72	49.79	93.05	25.58	0.00	66.03	236.66	142.17	0.00	6.75	14.99
72155 - Copying Costs	0.00	0.00	0.00	0.00	0.00	0.00	0.00	0.00	0.00	0.00	31.44	0.00
72810 - Purchasing Card Exp	0.00	0.00	0.00	0.00	286.51	77.39	1,934.52	1,433.23	671.95	102.49	(3,180.28)	277.95
<b>Total Current Expense</b>	<b>0.00</b>	<b>0.72</b>	<b>49.79</b>	<b>93.05</b>	<b>282.09</b>	<b>77.39</b>	<b>2,000.55</b>	<b>1,668.89</b>	<b>814.12</b>	<b>102.49</b>	<b>(3,142.09)</b>	<b>292.94</b>
75300 - Peard Hotel	0.00	0.00	0.00	0.00	0.00	0.00	0.00	0.00	3,145.12	323.63	(3,411.76)	0.00
75325 - P-Card Airfare	0.00	0.00	0.00	0.00	0.00	0.00	0.00	1,379.41	25.00	25.00	(773.00)	0.00
<b>Total Travel</b>	<b>0.00</b>	<b>0.00</b>	<b>0.00</b>	<b>0.00</b>	<b>0.00</b>	<b>0.00</b>	<b>0.00</b>	<b>1,379.41</b>	<b>3,170.12</b>	<b>348.63</b>	<b>(4,184.76)</b>	<b>0.00</b>

**Weber State University**  
**Revenue and Expenditure Summary by Month**  
**FY14**

	July	August	Sept	Oct	Nov	Dec	Jan	Feb	March	April	May	June
<b>316609 - Index 151017 - Art Methods Lab OH 22100 - Visual Arts</b>												
79025 - Overhead	0.00	0.07	4.98	9.31	29.20	7.74	200.05	304.91	388.45	45.13	(732.70)	29.30
<b>Total Overhead</b>	<b>0.00</b>	<b>0.07</b>	<b>4.98</b>	<b>9.31</b>	<b>29.20</b>	<b>7.74</b>	<b>200.05</b>	<b>304.91</b>	<b>388.45</b>	<b>45.13</b>	<b>(732.70)</b>	<b>29.30</b>
<b>Total Expense</b>	<b>0.00</b>	<b>0.79</b>	<b>54.77</b>	<b>102.36</b>	<b>321.29</b>	<b>85.13</b>	<b>2,200.60</b>	<b>3,354.21</b>	<b>4,382.69</b>	<b>496.25</b>	<b>(8,059.55)</b>	<b>322.24</b>

<b>316610 - Index 151020 - Ceramics Lab-I OH 22100 - Visual Arts</b>												
52675 - Lab Fee-No 1	(1.00)	145.00	(273.20)	0.00	5,548.00	130.00	(562.20)	0.00	0.00	6,466.00	0.00	(488.40)
56270 - Sales-Other-Ntax	0.00	0.00	40.00	30.00	0.00	0.00	0.00	69.73	0.00	0.00	0.00	0.00
<b>Total Revenue</b>	<b>(1.00)</b>	<b>145.00</b>	<b>(233.20)</b>	<b>30.00</b>	<b>5,548.00</b>	<b>130.00</b>	<b>(562.20)</b>	<b>69.73</b>	<b>0.00</b>	<b>6,466.00</b>	<b>0.00</b>	<b>(488.40)</b>
71210 - Building Material-Repair	0.00	0.00	0.00	77.20	0.00	0.00	0.00	0.00	0.00	0.00	0.00	0.00
71270 - Stock	0.00	0.00	0.00	13.78	52.70	0.00	0.00	0.00	0.00	0.00	0.00	0.00
71615 - Child Care Supplies	0.00	0.00	0.00	581.00	0.00	0.00	0.00	0.00	0.00	0.00	0.00	0.00
72065 - Minor Shop Equipment	0.00	0.00	0.00	382.27	0.00	0.00	0.00	0.00	0.00	0.00	0.00	0.00
72105 - Office Supplies	0.00	0.00	0.00	91.98	0.00	0.00	0.00	0.00	0.00	0.00	0.00	0.00
72130 - Campus Stores Expense	0.00	0.00	0.00	0.00	0.00	0.00	0.00	13.25	0.00	0.00	0.00	0.00
72155 - Copying Costs	0.00	0.00	5.25	18.20	0.00	0.00	0.00	8.05	6.00	0.00	0.00	0.00
72285 - Courier Services	0.00	0.00	0.00	96.88	11.91	(108.79)	0.00	0.00	0.00	0.00	0.00	0.00
72610 - Purchasing Card Exp	0.00	46.60	(1,803.53)	824.25	498.95	1,448.83	132.46	775.35	324.55	2,050.37	(461.41)	(107.12)
<b>Total Current Expense</b>	<b>0.00</b>	<b>46.60</b>	<b>(1,798.28)</b>	<b>2,085.56</b>	<b>583.56</b>	<b>1,341.04</b>	<b>132.46</b>	<b>796.65</b>	<b>330.55</b>	<b>2,050.37</b>	<b>(461.41)</b>	<b>(107.12)</b>
79025 - Overhead	0.00	4.66	(179.83)	208.56	56.35	134.11	13.24	79.65	33.05	205.03	(46.11)	(10.71)
<b>Total Overhead</b>	<b>0.00</b>	<b>4.66</b>	<b>(179.83)</b>	<b>208.56</b>	<b>56.35</b>	<b>134.11</b>	<b>13.24</b>	<b>79.65</b>	<b>33.05</b>	<b>205.03</b>	<b>(46.11)</b>	<b>(10.71)</b>
<b>Total Expense</b>	<b>0.00</b>	<b>51.26</b>	<b>(1,978.11)</b>	<b>2,294.12</b>	<b>619.91</b>	<b>1,475.15</b>	<b>145.70</b>	<b>876.30</b>	<b>363.60</b>	<b>2,255.40</b>	<b>(507.52)</b>	<b>(117.83)</b>

<b>316614 - Index 151050 - Painting Lab-I OH 22100 - Visual Arts</b>												
52675 - Lab Fee-No 1	55.00	110.00	77.00	0.00	1,815.00	110.00	5.50	0.00	0.00	935.00	0.00	0.00
<b>Total Revenue</b>	<b>55.00</b>	<b>110.00</b>	<b>77.00</b>	<b>0.00</b>	<b>1,815.00</b>	<b>110.00</b>	<b>5.50</b>	<b>0.00</b>	<b>0.00</b>	<b>935.00</b>	<b>0.00</b>	<b>0.00</b>
71590 - Food-Classroom	0.00	0.00	0.00	107.00	62.60	(169.60)	0.00	0.00	0.00	0.00	0.00	0.00
72130 - Campus Stores Expense	0.00	74.95	8.49	344.17	27.89	30.99	16.78	279.96	1.49	51.98	93.96	0.00
72610 - Purchasing Card Exp	95.17	1,162.66	(427.73)	(920.20)	(14.27)	(74.86)	49.19	306.75	2,196.35	178.19	(2,404.10)	49.57
<b>Total Current Expense</b>	<b>95.17</b>	<b>1,237.61</b>	<b>(419.24)</b>	<b>(469.03)</b>	<b>76.22</b>	<b>(213.46)</b>	<b>65.95</b>	<b>586.71</b>	<b>2,197.84</b>	<b>230.17</b>	<b>(2,310.14)</b>	<b>49.57</b>

**Weber State University**  
**Revenue and Expenditure Summary by Month**  
**FY14**

	July	August	Sept	Oct	Nov	Dec	Jan	Feb	March	April	May	June
<b>316614 - Index 151050 - Painting Lab-I OH 22100 - Visual Arts</b>												
75185 - Travel-Auto	0.00	0.00	0.00	0.00	3.00	(3.00)	0.00	0.00	0.00	0.00	0.00	0.00
75325 - P-Card Airfare	0.00	0.00	0.00	0.00	0.00	0.00	0.00	0.00	403.00	0.00	(403.00)	0.00
75350 - P-Card Travel	0.00	2,544.64	(852.49)	(1,500.00)	(2,469.80)	0.00	0.00	0.00	0.00	0.00	0.00	0.00
<b>Total Travel</b>	<b>0.00</b>	<b>2,544.64</b>	<b>(852.49)</b>	<b>(1,500.00)</b>	<b>(2,466.80)</b>	<b>(3.00)</b>	<b>0.00</b>	<b>0.00</b>	<b>403.00</b>	<b>0.00</b>	<b>(403.00)</b>	<b>0.00</b>
79025 - Overhead	9.52	378.23	(127.17)	(196.90)	(239.04)	(21.65)	6.60	58.67	260.08	23.02	(271.30)	4.95
<b>Total Overhead</b>	<b>9.52</b>	<b>378.23</b>	<b>(127.17)</b>	<b>(196.90)</b>	<b>(239.04)</b>	<b>(21.65)</b>	<b>6.60</b>	<b>58.67</b>	<b>260.08</b>	<b>23.02</b>	<b>(271.30)</b>	<b>4.95</b>
<b>Total Expense</b>	<b>104.69</b>	<b>4,160.48</b>	<b>(1,398.90)</b>	<b>(2,165.93)</b>	<b>(2,629.42)</b>	<b>(238.11)</b>	<b>72.55</b>	<b>645.38</b>	<b>2,860.92</b>	<b>253.19</b>	<b>(2,984.44)</b>	<b>54.52</b>

**316695 - Index 151057 - General Art Lab-I OH 22100 - Visual Arts**

52675 - Lab Fee-No 1	1,988.00	170.00	(313.50)	2.50	6,742.50	1,217.50	455.50	23.50	1,886.00	6,333.00	1,299.50	1,431.50
<b>Total Revenue</b>	<b>1,988.00</b>	<b>170.00</b>	<b>(313.50)</b>	<b>2.50</b>	<b>6,742.50</b>	<b>1,217.50</b>	<b>455.50</b>	<b>23.50</b>	<b>1,886.00</b>	<b>6,333.00</b>	<b>1,299.50</b>	<b>1,431.50</b>
62515 - Hourly Student	0.00	0.00	88.42	100.04	80.20	63.66	0.00	0.00	0.00	110.59	180.97	72.88
62640 - Other Hourly Wages	0.00	0.00	93.50	42.50	483.85	97.75	0.00	580.00	1,000.90	589.70	82.70	91.55
<b>Total Hourly Wages</b>	<b>0.00</b>	<b>0.00</b>	<b>181.92</b>	<b>142.54</b>	<b>574.05</b>	<b>161.41</b>	<b>0.00</b>	<b>580.00</b>	<b>1,000.90</b>	<b>700.29</b>	<b>263.67</b>	<b>164.23</b>
63015 - Workers Compensation Insur.	0.00	0.00	1.58	0.82	7.88	1.63	0.00	0.87	1.51	2.63	2.97	2.60
63025 - FICA	0.00	0.00	7.15	3.25	37.78	7.48	0.00	44.37	76.57	53.57	20.16	12.57
63065 - Unemployment	0.00	0.00	0.06	0.03	0.29	0.06	0.00	0.35	1.82	1.47	0.21	0.23
<b>Total Staff Benefits</b>	<b>0.00</b>	<b>0.00</b>	<b>8.79</b>	<b>4.10</b>	<b>45.95</b>	<b>9.17</b>	<b>0.00</b>	<b>45.59</b>	<b>79.90</b>	<b>57.67</b>	<b>23.34</b>	<b>15.40</b>
71120 - Books and Pub-Other	0.00	0.00	0.00	0.00	0.00	0.00	34.13	0.00	0.00	0.00	0.00	0.00
71290 - FM Work Orders	0.00	0.00	18.80	0.00	0.00	0.00	0.00	0.00	25.00	0.00	0.00	0.00
71595 - Instruct Supply-Other	0.00	0.00	0.00	0.00	0.00	0.00	0.00	0.00	0.00	310.98	0.00	0.00
71605 - Lab Supplies	0.00	0.00	0.00	0.00	0.00	0.00	0.00	137.50	0.00	0.00	0.00	107.12
71865 - Luncheons/Receptions	0.00	0.00	0.00	0.00	0.00	0.00	0.00	0.00	0.00	92.98	142.75	149.95
71980 - Refreshments	0.00	0.00	0.00	0.00	0.00	0.00	0.00	0.00	2.06	0.00	0.00	0.00
71940 - Seminars	0.00	0.00	0.00	0.00	0.00	0.00	0.00	0.00	0.00	0.00	500.00	0.00
72055 - Minor Office Furnishings	0.00	0.00	0.00	0.00	0.00	0.00	0.00	0.00	0.00	0.00	109.41	0.00
72105 - Office Supplies	0.00	0.00	25.00	0.00	80.01	19.56	185.26	205.86	0.00	0.00	159.96	0.00
72130 - Campus Stores Expense	162.80	13.49	286.11	83.46	286.84	0.00	309.31	67.77	63.28	56.11	23.49	79.76
72155 - Copying Costs	0.00	0.00	22.59	42.40	42.00	420.88	26.50	1.76	15.50	4.98	4.10	0.00
72167 - Printing-Internal	0.00	0.00	74.96	0.00	0.00	0.00	0.00	0.00	0.00	0.00	0.00	161.66

Weber State University  
 Revenue and Expenditure Summary by Month  
 FY14

	July	August	Sept	Oct	Nov	Dec	Jan	Feb	March	April	May	June
<b>316695 - Index 151057 - General Art Lab-I OH 22100 - Visual Arts</b>												
72290 - Honorariums-1099	0.00	300.00	0.00	250.00	0.00	0.00	0.00	0.00	0.00	0.00	0.00	0.00
72406 - Advert-Publicity	0.00	0.00	0.00	0.00	0.00	0.00	0.00	0.00	0.00	0.00	0.00	0.00
72543 - Employee W/Idcards Expense	0.00	0.00	10.00	0.00	0.00	0.00	0.00	0.00	0.00	0.00	0.00	0.00
72600 - Petty Cash Expenditure	0.00	134.77	0.00	16.00	0.00	0.00	0.00	0.00	23.18	18.50	12.51	36.84
72610 - Purchasing Card Exp	218.81	310.01	0.00	1,029.08	0.00	0.00	95.62	0.00	803.33	59.30	0.00	0.00
72720 - Reimbursements	0.00	0.00	0.00	0.00	0.00	0.00	0.00	(500.00)	0.00	0.00	0.00	0.00
<b>Total Current Expense</b>	<b>381.61</b>	<b>758.27</b>	<b>437.46</b>	<b>1,420.94</b>	<b>388.85</b>	<b>440.24</b>	<b>850.82</b>	<b>(87.11)</b>	<b>932.35</b>	<b>542.85</b>	<b>952.22</b>	<b>535.33</b>
77110 - Audio-Visual Equipment	0.00	0.00	4,725.02	0.00	0.00	0.00	0.00	0.00	0.00	0.00	0.00	0.00
<b>Total Capital Outlay</b>	<b>0.00</b>	<b>0.00</b>	<b>4,725.02</b>	<b>0.00</b>	<b>0.00</b>	<b>0.00</b>	<b>0.00</b>	<b>0.00</b>	<b>0.00</b>	<b>0.00</b>	<b>0.00</b>	<b>0.00</b>
79025 - Overhead	89.79	75.82	533.34	156.77	100.89	61.09	65.08	103.87	201.32	130.11	123.93	71.50
<b>Total Overhead</b>	<b>89.79</b>	<b>75.82</b>	<b>533.34</b>	<b>156.77</b>	<b>100.89</b>	<b>61.09</b>	<b>65.08</b>	<b>103.87</b>	<b>201.32</b>	<b>130.11</b>	<b>123.93</b>	<b>71.50</b>
<b>Total Expense</b>	<b>471.40</b>	<b>834.09</b>	<b>5,866.53</b>	<b>1,724.35</b>	<b>1,109.74</b>	<b>671.91</b>	<b>715.90</b>	<b>642.35</b>	<b>2,214.47</b>	<b>1,430.92</b>	<b>1,363.16</b>	<b>786.46</b>

<b>316615 - Index 151060 - Photo Materials Lab-I OH 22100 - Visual Arts</b>												
52675 - Lab Fee-No 1	145.00	(722.00)	(67.00)	(88.00)	10,982.75	415.00	(901.50)	0.00	2,120.00	9,042.00	1,031.50	480.32
<b>Total Revenue</b>	<b>145.00</b>	<b>(722.00)</b>	<b>(67.00)</b>	<b>(88.00)</b>	<b>10,982.75</b>	<b>415.00</b>	<b>(901.50)</b>	<b>0.00</b>	<b>2,120.00</b>	<b>9,042.00</b>	<b>1,031.50</b>	<b>480.32</b>
71120 - Books and Pub-Other	0.00	0.00	0.00	0.00	0.00	12.40	0.00	16.64	0.00	0.00	0.00	0.00
71270 - Stock	0.00	0.00	0.00	0.00	0.00	0.00	0.00	0.00	0.00	71.48	0.00	0.00
71570 - Aud/Visual Suppl/Serv	0.00	0.00	0.00	0.00	0.00	0.00	0.00	0.00	0.00	0.00	0.00	219.98
71595 - Instruct Supply-Other	0.00	0.00	0.00	0.00	0.00	0.00	0.00	0.00	7.45	23.63	23.63	293.75
71905 - Lab Supplies	0.00	0.00	0.00	0.00	0.00	907.91	0.00	0.00	0.00	0.00	0.00	0.00
71985 - Luncheons/Receptions	0.00	0.00	0.00	0.00	0.00	0.00	0.00	0.00	0.00	0.00	0.00	0.00
71980 - Refreshments	0.00	0.00	0.00	0.00	0.00	0.00	0.00	0.00	39.30	0.00	0.00	0.00
72130 - Campus Stores Expense	0.00	96.64	216.72	131.50	15.60	20.33	91.21	54.97	55.47	81.95	42.97	0.00
72905 - Photo Suppl/Serv	0.00	0.00	0.00	0.00	1,415.35	0.00	0.00	0.00	0.00	0.00	0.00	0.00
72610 - Purchasing Card Exp	235.50	2,679.69	1,322.07	473.97	19.00	719.60	2,945.53	2,197.18	354.45	1,261.35	400.00	334.85
72720 - Reimbursements	0.00	0.00	(95.00)	(145.00)	0.00	0.00	0.00	0.00	0.00	0.00	0.00	0.00
<b>Total Current Expense</b>	<b>235.50</b>	<b>2,976.33</b>	<b>1,443.79</b>	<b>460.47</b>	<b>1,449.95</b>	<b>1,660.24</b>	<b>3,036.74</b>	<b>2,268.79</b>	<b>456.67</b>	<b>1,438.41</b>	<b>466.60</b>	<b>648.58</b>
75030 - FM Vehicle Fleet Expense	0.00	0.00	0.00	0.00	0.00	0.00	0.00	0.00	0.00	85.00	0.00	0.00
75275 - Out-St Trav el-Other	0.00	0.00	0.00	0.00	0.00	0.00	0.00	0.00	0.00	0.00	0.00	0.00

Weber State University  
Revenue and Expenditure Summary by Month  
FY14

Page 9 of 20

	July	August	Sept	Oct	Nov	Dec	Jan	Feb	March	April	May	June
<b>316615 - Index 151060 - Photo Materials Lab-I OH 22100 - Visual Arts</b>												
Total Travel	0.00	0.00	0.00	0.00	0.00	0.00	0.00	0.00	0.00	85.00	0.00	0.00
79025 - Overhead	23.55	297.63	153.87	60.55	145.00	166.02	303.67	226.90	45.66	152.35	46.66	84.85
Total Overhead	23.55	297.63	153.87	60.55	145.00	166.02	303.67	226.90	45.66	152.35	46.66	84.85
Total Expense	258.05	3,273.96	1,597.66	521.02	1,594.95	1,826.26	3,340.41	2,495.69	502.33	1,675.76	513.26	933.43

	July	August	Sept	Oct	Nov	Dec	Jan	Feb	March	April	May	June
<b>316616 - Index 151070 - Printmaking Lab-I OH 22100 - Visual Arts</b>												
52675 - Lab Fee-No 1	254.00	127.00	(88.90)	0.00	3,683.00	254.00	(330.20)	0.00	0.00	3,937.00	381.00	0.00
Total Revenue	254.00	127.00	(88.90)	0.00	3,683.00	254.00	(330.20)	0.00	0.00	3,937.00	381.00	0.00
71270 - Stock	0.00	0.00	0.00	45.52	0.00	0.00	0.00	0.00	0.00	0.00	0.00	0.00
71590 - Food-Classroom	0.00	0.00	0.00	13.99	0.00	0.00	0.00	0.00	0.00	0.00	0.00	0.00
71595 - Instruct Supply-Other	0.00	0.00	0.00	0.00	0.00	0.00	0.00	0.00	0.00	0.00	1,043.26	0.00
71605 - Lab Supplies	0.00	0.00	0.00	0.00	0.00	0.00	0.00	107.46	0.00	0.00	0.00	0.00
71965 - Luncheons/Receptions	0.00	0.00	0.00	0.00	0.00	0.00	0.00	0.00	0.00	0.00	56.44	0.00
72070 - Minor Art Objects	0.00	0.00	0.00	482.63	0.00	0.00	0.00	0.00	0.00	0.00	0.00	0.00
72105 - Office Supplies	0.00	0.00	0.00	206.68	0.00	0.00	0.00	39.97	0.00	0.00	62.60	0.00
72130 - Campus Stores Expense	0.00	80.79	19.12	132.26	149.68	1.38	72.22	17.90	26.51	15.68	32.65	1.60
72163 - Printing-External	0.00	0.00	0.00	411.23	0.00	0.00	(217.19)	0.00	0.00	0.00	482.54	0.00
72335 - Services-Other	0.00	0.00	0.00	381.55	0.00	0.00	0.00	0.00	0.00	0.00	344.32	0.00
72610 - Purchasing Card Exp	60.45	40.86	477.73	0.00	733.72	256.68	(505.51)	1,500.00	0.00	0.00	(1,481.06)	316.54
72720 - Reimbursements	0.00	(21.45)	(6.75)	(12.00)	(488.00)	178.00	(165.00)	(71.82)	(25.00)	(35.00)	(225.00)	25.00
Total Current Expense	60.45	100.20	490.10	1,661.86	395.40	435.06	(815.48)	1,593.51	1.51	(19.32)	315.75	343.14
79025 - Overhead	6.04	12.17	49.68	167.39	88.35	25.71	(65.05)	166.54	2.65	1.57	54.06	31.81
Total Overhead	6.04	12.17	49.68	167.39	88.35	25.71	(65.05)	166.54	2.65	1.57	54.06	31.81
Total Expense	66.49	112.37	539.78	1,829.25	483.75	460.77	(880.53)	1,780.05	4.16	(17.75)	369.81	374.95

	July	August	Sept	Oct	Nov	Dec	Jan	Feb	March	April	May	June
<b>316617 - Index 151080 - Sculpture Lab-I OH 22100 - Visual Arts</b>												
52675 - Lab Fee-No 1	1,210.00	(1,044.00)	(394.60)	(130.00)	11,764.00	1,155.00	(901.60)	110.00	550.40	12,228.00	901.80	1,480.00
Total Revenue	1,210.00	(1,044.00)	(394.60)	(130.00)	11,764.00	1,155.00	(901.60)	110.00	550.40	12,228.00	901.80	1,480.00

**Weber State University**  
**Revenue and Expenditure Summary by Month**  
**FY14**

	July	August	Sept	Oct	Nov	Dec	Jan	Feb	March	April	May	June
<b>316617 - Index 151080 - Sculpture Lab-I OH 22100 - Visual Arts</b>												
62510 - Work-Study Student	0.00	0.00	0.00	0.00	25.09	50.03	27.51	49.59	33.89	45.90	15.31	0.00
62515 - Hourly Student	0.00	0.00	0.00	0.00	0.00	0.00	0.00	0.00	0.00	0.00	407.84	1,069.28
62840 - Other Hourly Wages	0.00	87.50	946.57	1,089.22	1,024.76	1,056.55	754.93	1,094.49	1,004.19	1,149.72	227.92	0.00
62890 - Supplemental Pay	0.00	0.00	0.00	0.00	0.00	0.00	0.00	0.00	0.00	0.00	0.00	2,200.00
<b>Total Hourly Wages</b>	<b>0.00</b>	<b>87.50</b>	<b>946.57</b>	<b>1,089.22</b>	<b>1,049.85</b>	<b>1,106.58</b>	<b>782.44</b>	<b>1,134.08</b>	<b>1,038.08</b>	<b>1,195.62</b>	<b>651.07</b>	<b>3,269.28</b>
63015 - Workers Compensation Insur.	0.00	1.06	13.30	17.12	16.14	16.66	11.90	17.11	15.83	18.13	4.22	5.08
63025 - FICA	0.00	5.16	64.76	83.32	78.40	80.83	57.75	82.96	76.82	87.95	17.44	165.10
63035 - Retirement - TIAA-CREF	0.00	0.00	0.00	0.00	0.00	0.00	0.00	0.00	0.00	0.00	0.00	312.40
63065 - Unemployment	0.00	0.04	0.51	0.65	0.62	0.63	0.46	0.65	1.78	2.87	0.57	5.50
<b>Total Staff Benefits</b>	<b>0.00</b>	<b>6.26</b>	<b>78.57</b>	<b>101.09</b>	<b>95.16</b>	<b>98.12</b>	<b>70.11</b>	<b>100.72</b>	<b>94.43</b>	<b>108.95</b>	<b>22.23</b>	<b>488.08</b>
71210 - Building Material-Repair	0.00	0.00	0.00	114.00	0.00	0.00	0.00	0.00	0.00	0.00	0.00	0.00
71270 - Stock	0.00	0.00	0.00	407.27	46.87	0.00	0.00	0.00	0.00	0.00	0.00	0.00
71280 - FM Work Orders	0.00	0.00	0.00	73.45	0.00	0.00	0.00	0.00	0.00	0.00	0.00	0.00
71805 - Lab Supplies	0.00	0.00	150.00	1,044.06	90.56	(1,000.00)	0.00	0.00	0.00	0.00	0.00	0.00
72130 - Campus Stores Expense	0.00	0.00	10.16	106.58	0.00	20.23	8.07	265.26	0.00	0.00	0.00	0.00
72280 - Honorariums-1099	300.00	0.00	0.00	0.00	0.00	0.00	0.00	0.00	0.00	0.00	0.00	0.00
72600 - Petty Cash Expenditure	59.02	0.00	0.00	0.00	78.42	0.00	0.00	0.00	0.00	0.00	0.00	0.00
72605 - Photo Supp/Sev	0.00	0.00	0.00	16.79	0.00	0.00	0.00	0.00	0.00	0.00	0.00	0.00
72610 - Purchasing Card Exp	0.00	542.82	358.96	0.00	627.85	274.79	1,645.73	1,515.61	766.88	707.91	460.18	690.69
72720 - Reimbursements	0.00	0.00	0.00	0.00	0.00	0.00	0.00	0.00	0.00	0.00	(2,814.25)	(2,814.25)
<b>Total Current Expense</b>	<b>359.02</b>	<b>542.82</b>	<b>519.12</b>	<b>1,762.15</b>	<b>843.70</b>	<b>(704.98)</b>	<b>1,653.80</b>	<b>1,780.87</b>	<b>766.88</b>	<b>707.91</b>	<b>(2,354.07)</b>	<b>(2,133.56)</b>
74515 - Other Fuel and Power	0.00	0.00	0.00	0.00	0.00	0.00	0.00	0.00	0.00	0.00	0.00	0.00
<b>Total Fuel and Power</b>	<b>0.00</b>	<b>0.00</b>	<b>0.00</b>	<b>0.00</b>	<b>0.00</b>	<b>0.00</b>	<b>0.00</b>	<b>0.00</b>	<b>0.00</b>	<b>0.00</b>	<b>0.00</b>	<b>0.00</b>
75030 - FM Vehicle Fleet Expense	0.00	0.00	0.00	0.00	35.00	0.00	0.00	0.00	0.00	0.00	0.00	0.00
75350 - P-Card Travel	0.00	(227.82)	244.80	0.00	0.00	0.00	0.00	0.00	0.00	0.00	0.00	0.00
<b>Total Travel</b>	<b>0.00</b>	<b>(227.82)</b>	<b>244.80</b>	<b>0.00</b>	<b>35.00</b>	<b>0.00</b>	<b>0.00</b>	<b>0.00</b>	<b>0.00</b>	<b>0.00</b>	<b>0.00</b>	<b>0.00</b>
79025 - Overhead	(69.54)	38.88	168.89	295.25	202.39	49.97	250.65	301.54	189.94	201.22	113.33	443.81
<b>Total Overhead</b>	<b>(69.54)</b>	<b>38.88</b>	<b>168.89</b>	<b>295.25</b>	<b>202.39</b>	<b>49.97</b>	<b>250.65</b>	<b>301.54</b>	<b>189.94</b>	<b>201.22</b>	<b>113.33</b>	<b>443.81</b>
<b>Total Expense</b>	<b>289.48</b>	<b>427.64</b>	<b>1,857.95</b>	<b>3,247.71</b>	<b>2,228.10</b>	<b>549.69</b>	<b>2,757.00</b>	<b>3,317.21</b>	<b>2,089.33</b>	<b>2,213.70</b>	<b>(1,567.44)</b>	<b>2,067.61</b>

**Weber State University**  
**Revenue and Expenditure Summary by Month**  
**FY14**

	July	August	Sept	Oct	Nov	Dec	Jan	Feb	March	April	May	June
<b>316701 - Index 151710 - VISCOM Speaker 22100 - Visual Arts</b>												
52675 - Lab Fee-No 1	0.00	176.00	(158.40)	0.00	7,480.00	880.00	448.80	0.00	0.00	6,248.00	528.00	88.00
<b>Total Revenue</b>	<b>0.00</b>	<b>176.00</b>	<b>(158.40)</b>	<b>0.00</b>	<b>7,480.00</b>	<b>880.00</b>	<b>448.80</b>	<b>0.00</b>	<b>0.00</b>	<b>6,248.00</b>	<b>528.00</b>	<b>88.00</b>
71865 - Luncheons/Receptions	0.00	0.00	0.00	0.00	0.00	793.40	0.00	0.00	0.00	0.00	0.00	0.00
72105 - Office Supplies	0.00	0.00	0.00	31.24	0.00	0.00	0.00	0.00	0.00	0.00	0.00	0.00
72163 - Printing-External	0.00	0.00	0.00	0.00	420.68	(420.68)	0.00	0.00	0.00	0.00	0.00	0.00
72280 - Honorariums-1089	0.00	0.00	0.00	0.00	0.00	2,300.00	1,200.00	250.00	0.00	400.00	0.00	0.00
72335 - Services-Other	0.00	0.00	0.00	1,000.00	0.00	13.00	0.00	0.00	0.00	0.00	0.00	0.00
72405 - Advert-Publicity	0.00	0.00	0.00	0.00	0.00	98.00	0.00	0.00	0.00	0.00	0.00	0.00
72508 - Gifts In Kind Expense	0.00	0.00	0.00	160.00	0.00	0.00	0.00	0.00	0.00	0.00	0.00	0.00
72610 - Purchasing Card Exp	0.00	0.00	504.31	0.00	0.00	0.00	0.00	170.63	0.00	32.00	0.00	630.00
<b>Total Current Expense</b>	<b>0.00</b>	<b>0.00</b>	<b>504.31</b>	<b>1,181.24</b>	<b>420.68</b>	<b>2,783.72</b>	<b>1,200.00</b>	<b>420.63</b>	<b>0.00</b>	<b>432.00</b>	<b>0.00</b>	<b>630.00</b>
75300 - P-card Hotel	0.00	0.00	0.00	0.00	0.00	534.00	0.00	0.00	0.00	0.00	178.00	0.00
75325 - P-Card Airfare	0.00	0.00	0.00	0.00	0.00	0.00	0.00	998.00	0.00	0.00	0.00	230.00
75350 - P-Card Travel	0.00	0.00	701.70	0.00	0.00	11.00	0.00	0.00	0.00	0.00	0.00	0.00
<b>Total Travel</b>	<b>0.00</b>	<b>0.00</b>	<b>701.70</b>	<b>0.00</b>	<b>0.00</b>	<b>545.00</b>	<b>0.00</b>	<b>998.00</b>	<b>0.00</b>	<b>0.00</b>	<b>178.00</b>	<b>230.00</b>
79025 - Overhead	0.00	0.00	120.60	118.12	42.07	332.87	120.00	141.96	0.00	43.20	17.80	86.00
<b>Total Overhead</b>	<b>0.00</b>	<b>0.00</b>	<b>120.60</b>	<b>118.12</b>	<b>42.07</b>	<b>332.87</b>	<b>120.00</b>	<b>141.96</b>	<b>0.00</b>	<b>43.20</b>	<b>17.80</b>	<b>86.00</b>
<b>Total Expense</b>	<b>0.00</b>	<b>0.00</b>	<b>1,326.61</b>	<b>1,289.36</b>	<b>462.75</b>	<b>3,661.59</b>	<b>1,320.00</b>	<b>1,561.59</b>	<b>0.00</b>	<b>475.20</b>	<b>195.80</b>	<b>946.00</b>
<b>991220 - Index 162044 - AIGA 22100 - Visual Arts</b>												
72155 - Copying Costs	0.00	0.00	0.00	29.29	26.10	0.00	0.00	0.00	13.05	0.00	0.00	0.00
72600 - Petty Cash Expenditure	0.00	0.00	0.00	0.00	0.00	0.00	0.00	39.94	0.00	0.00	0.00	0.00
72720 - Reimbursements	0.00	0.00	0.00	0.00	(400.00)	0.00	0.00	115.00	(100.00)	0.00	0.00	0.00
<b>Total Current Expense</b>	<b>0.00</b>	<b>0.00</b>	<b>0.00</b>	<b>29.29</b>	<b>(373.90)</b>	<b>0.00</b>	<b>0.00</b>	<b>154.94</b>	<b>(86.95)</b>	<b>0.00</b>	<b>0.00</b>	<b>0.00</b>
<b>Total Expense</b>	<b>0.00</b>	<b>0.00</b>	<b>0.00</b>	<b>29.29</b>	<b>(373.90)</b>	<b>0.00</b>	<b>0.00</b>	<b>154.94</b>	<b>(86.95)</b>	<b>0.00</b>	<b>0.00</b>	<b>0.00</b>
<b>992703 - Index 165040 - Weber Art Guild 22100 - Visual Arts</b>												
58494 - Other Income	11.00	0.00	0.00	45.00	20.00	0.00	10.00	0.00	0.00	5.00	0.00	0.00
<b>Total Revenue</b>	<b>11.00</b>	<b>0.00</b>	<b>0.00</b>	<b>45.00</b>	<b>20.00</b>	<b>0.00</b>	<b>10.00</b>	<b>0.00</b>	<b>0.00</b>	<b>5.00</b>	<b>0.00</b>	<b>0.00</b>



**Weber State University**  
**Revenue and Expenditure Summary by Month**  
**FY14**

	July	August	Sept	Oct	Nov	Dec	Jan	Feb	March	April	May	June
<b>992703 - Index 165040 - Weber Art Guild 22100 - Visual Arts</b>												
71625 - Material-Clothing	26.73	0.00	0.00	0.00	0.00	0.00	0.00	0.00	0.00	0.00	0.00	0.00
72130 - Campus Stores Expense	0.00	0.00	0.00	0.75	65.92	0.00	0.00	0.00	0.00	0.00	0.00	0.00
72155 - Copying Costs	0.00	0.00	0.00	0.00	32.65	0.00	0.00	0.00	0.00	0.00	0.00	0.00
72350 - Stipends-1099	0.00	0.00	0.00	0.00	50.00	0.00	0.00	0.00	0.00	0.00	0.00	0.00
72600 - Petty Cash Expenditure	0.00	0.00	0.00	0.00	14.33	0.00	0.00	0.00	0.00	0.00	0.00	0.00
72720 - Reimbursements	0.00	0.00	0.00	0.00	(300.00)	0.00	0.00	0.00	0.00	0.00	0.00	0.00
<b>Total Current Expense</b>	<b>26.73</b>	<b>0.00</b>	<b>0.00</b>	<b>0.75</b>	<b>(137.10)</b>	<b>0.00</b>	<b>0.00</b>	<b>0.00</b>	<b>0.00</b>	<b>0.00</b>	<b>0.00</b>	<b>0.00</b>
<b>Total Expense</b>	<b>26.73</b>	<b>0.00</b>	<b>0.00</b>	<b>0.75</b>	<b>(137.10)</b>	<b>0.00</b>	<b>0.00</b>	<b>0.00</b>	<b>0.00</b>	<b>0.00</b>	<b>0.00</b>	<b>0.00</b>

<b>524005 - Index 263042 - Arts In The Park Fund 22100 - Visual Arts</b>												
55100 - Donations and Gifts	0.00	0.00	0.00	15,123.02	0.00	0.00	0.00	0.00	0.00	0.00	0.00	0.00
58115 - Interest on Investments	0.00	0.00	0.00	13.00	0.00	0.00	22.00	0.00	0.00	30.00	0.00	0.00
58140 - Security Sale-Loss	0.00	0.00	0.00	0.00	(121.55)	0.00	0.00	0.00	0.00	0.00	0.00	0.00
<b>Total Revenue</b>	<b>0.00</b>	<b>0.00</b>	<b>0.00</b>	<b>15,136.02</b>	<b>(121.55)</b>	<b>0.00</b>	<b>22.00</b>	<b>0.00</b>	<b>0.00</b>	<b>30.00</b>	<b>0.00</b>	<b>0.00</b>
62515 - Hourly Student	0.00	0.00	0.00	0.00	0.00	0.00	0.00	0.00	0.00	0.00	0.00	3,050.00
62585 - Instruction-Non Credit	0.00	0.00	0.00	0.00	1,700.00	0.00	0.00	0.00	0.00	0.00	0.00	0.00
62640 - Other Hourly Wages	0.00	0.00	0.00	0.00	0.00	0.00	0.00	0.00	0.00	0.00	0.00	1,500.00
62690 - Supplemental Pay	0.00	0.00	0.00	0.00	0.00	0.00	0.00	0.00	400.00	400.00	0.00	0.00
<b>Total Hourly Wages</b>	<b>0.00</b>	<b>0.00</b>	<b>0.00</b>	<b>0.00</b>	<b>1,700.00</b>	<b>0.00</b>	<b>0.00</b>	<b>0.00</b>	<b>400.00</b>	<b>400.00</b>	<b>0.00</b>	<b>4,550.00</b>
63015 - Workers Compensation Insur.	0.00	0.00	0.00	0.00	2.53	0.00	0.00	0.00	6.29	6.29	0.00	11.86
63025 - FICA	0.00	0.00	0.00	0.00	130.05	0.00	0.00	0.00	30.26	30.25	0.00	317.47
63035 - Retirement - TIAA-CREF	0.00	0.00	0.00	0.00	0.00	0.00	0.00	0.00	56.80	56.80	0.00	0.00
63065 - Unemployment	0.00	0.00	0.00	0.00	0.54	0.00	0.00	0.00	1.00	1.00	0.00	2.75
<b>Total Staff Benefits</b>	<b>0.00</b>	<b>0.00</b>	<b>0.00</b>	<b>0.00</b>	<b>133.12</b>	<b>0.00</b>	<b>0.00</b>	<b>0.00</b>	<b>94.35</b>	<b>94.34</b>	<b>0.00</b>	<b>332.08</b>
71865 - Luncheons/Receptions	0.00	0.00	0.00	0.00	0.00	0.00	0.00	0.00	0.00	0.00	0.00	158.72
72130 - Campus Stores Expense	0.00	0.00	0.00	0.00	0.00	0.00	0.00	0.00	0.00	0.00	0.00	900.00
72290 - Honorariums-1099	0.00	0.00	0.00	0.00	0.00	0.00	0.00	0.00	600.00	400.00	0.00	4,150.00
72435 - Commissions Expense	0.00	0.00	0.00	0.00	1.05	0.00	0.00	0.00	0.00	0.00	0.00	0.00
72600 - Petty Cash Expenditure	0.00	0.00	0.00	0.00	0.00	0.00	0.00	0.00	0.00	0.00	0.00	116.98
<b>Total Current Expense</b>	<b>0.00</b>	<b>0.00</b>	<b>0.00</b>	<b>0.00</b>	<b>1.05</b>	<b>0.00</b>	<b>0.00</b>	<b>0.00</b>	<b>600.00</b>	<b>400.00</b>	<b>0.00</b>	<b>5,325.70</b>

**Weber State University**  
**Revenue and Expenditure Summary by Month**  
**FY14**

	July	August	Sept	Oct	Nov	Dec	Jan	Feb	March	April	May	June
<b>524005 - Index 263042 - Arts In The Park Fund 22100 - Visual Arts</b>												
Total Expense	0.00	0.00	0.00	0.00	1,834.17	0.00	0.00	0.00	1,094.35	894.34	0.00	10,207.78
<b>524625 - Index 263130 - Ut Arts Cncl Visual 22100 - Visual Arts</b>												
58115 - Interest on Investments	0.00	0.00	0.00	0.00	0.00	0.00	0.00	142.99	0.00	0.00	0.00	0.00
Total Revenue	0.00	0.00	0.00	0.00	0.00	0.00	0.00	142.99	0.00	0.00	0.00	0.00
72335 - Services-Other	0.00	0.00	0.00	0.00	0.00	0.00	0.00	0.00	0.00	624.75	0.00	0.00
Total Current Expense	0.00	0.00	0.00	0.00	0.00	0.00	0.00	0.00	0.00	624.75	0.00	0.00
Total Expense	0.00	0.00	0.00	0.00	0.00	0.00	0.00	0.00	0.00	624.75	0.00	0.00
<b>525537 - Index 264781 - Visual Arts Outreach 22100 - Visual Arts</b>												
58115 - Interest on Investments	0.00	0.00	0.00	3.00	0.00	0.00	0.00	0.00	0.00	0.00	0.00	0.00
58494 - Other Income	0.00	0.00	0.00	250.00	0.00	0.00	0.00	0.00	0.00	0.00	0.00	0.00
Total Revenue	0.00	0.00	0.00	253.00	0.00	0.00	0.00	0.00	0.00	0.00	0.00	0.00
62585 - Instruction-Non Credit	0.00	0.00	0.00	0.00	0.00	0.00	389.39	0.00	0.00	0.00	0.00	0.00
62640 - Other Hourly Wages	0.00	0.00	0.00	0.00	0.00	0.00	0.00	1,200.00	700.00	500.00	0.00	0.00
Total Hourly Wages	0.00	0.00	0.00	0.00	0.00	0.00	389.39	1,200.00	700.00	500.00	0.00	0.00
63015 - Workers Compensation Insur.	0.00	0.00	0.00	0.00	0.00	0.00	0.59	7.49	1.05	0.75	0.00	0.00
63025 - FICA	0.00	0.00	0.00	0.00	0.00	0.00	29.79	89.96	53.55	38.25	0.00	0.00
63065 - Unemployment	0.00	0.00	0.00	0.00	0.00	0.00	0.23	0.72	1.49	1.25	0.00	0.00
63085 - Disability Insurance	0.00	0.00	0.00	0.00	0.00	0.00	0.00	1.48	0.00	0.00	0.00	0.00
63105 - Health Insurance	0.00	0.00	0.00	0.00	0.00	0.00	0.00	198.24	0.00	0.00	0.00	0.00
63205 - Dental Insurance	0.00	0.00	0.00	0.00	0.00	0.00	0.00	12.03	0.00	0.00	0.00	0.00
Total Staff Benefits	0.00	0.00	0.00	0.00	0.00	0.00	30.61	308.92	56.09	40.25	0.00	0.00
71120 - Books and Pub-Other	0.00	0.00	0.00	200.00	0.00	0.00	0.00	0.00	(400.00)	0.00	0.00	0.00
71455 - Activities Expense	0.00	0.00	0.00	0.00	0.00	0.00	(178.54)	0.00	0.00	0.00	0.00	0.00
71520 - Insurance Vehicle	0.00	0.00	0.00	0.00	75.00	0.00	0.00	0.00	0.00	0.00	0.00	0.00
71590 - Food-Classroom	0.00	0.00	0.00	30.08	0.00	0.00	0.00	0.00	(30.08)	0.00	0.00	0.00
71615 - Child Care Supplies	0.00	0.00	0.00	0.00	178.54	0.00	0.00	0.00	0.00	0.00	0.00	0.00
71865 - Luncheons/Receptions	0.00	0.00	0.00	0.00	110.59	0.00	(15.55)	0.00	0.00	0.00	0.00	0.00

**Weber State University**  
**Revenue and Expenditure Summary by Month**  
**FY14**

	July	August	Sept	Oct	Nov	Dec	Jan	Feb	March	April	May	June
<b>525537 - Index 264781 - Visual Arts Outreach 22100 - Visual Arts</b>												
71920 - Licenses and Permits	0.00	0.00	0.00	0.00	17.50	0.00	0.00	0.00	0.00	0.00	0.00	0.00
72105 - Office Supplies	0.00	0.00	0.00	193.97	185.26	0.00	(185.26)	0.00	(193.97)	0.00	0.00	0.00
72130 - Campus Stores Expense	1,000.00	(1,000.00)	0.00	0.00	0.00	0.00	0.00	0.00	179.98	0.00	0.00	0.00
72155 - Copying Costs	0.00	0.00	0.00	0.00	22.29	0.00	0.00	92.45	0.00	0.00	0.00	0.00
72290 - Honorariums-1099	0.00	0.00	0.00	0.00	0.00	400.00	0.00	0.00	0.00	0.00	0.00	0.00
72405 - Advert-Publicity	0.00	0.00	0.00	0.00	0.00	0.00	0.00	0.00	18.40	0.00	0.00	0.00
72600 - Petty Cash Expenditure	0.00	0.00	0.00	0.00	0.00	0.00	0.00	0.00	40.47	0.00	0.00	0.00
72610 - Purchasing Card Exp	121.74	(6,012.05)	719.09	(328.10)	(177.63)	958.30	(210.50)	249.24	(276.96)	(439.60)	6,900.22	(320.41)
72690 - Wear Apparel and Uniforms	0.00	0.00	0.00	102.65	0.00	0.00	0.00	0.00	(102.65)	0.00	0.00	0.00
72720 - Reimbursements	0.00	0.00	0.00	0.00	0.00	0.00	0.00	0.00	0.00	0.00	0.00	262.00
<b>Total Current Expense</b>	<b>1,121.74</b>	<b>(7,012.05)</b>	<b>719.09</b>	<b>198.60</b>	<b>411.54</b>	<b>1,358.30</b>	<b>(589.85)</b>	<b>341.69</b>	<b>(764.81)</b>	<b>(439.60)</b>	<b>6,900.22</b>	<b>(58.41)</b>
75030 - FM Vehicle Fleet Expense	1,050.00	(1,050.00)	0.00	0.00	0.00	0.00	0.00	0.00	0.00	0.00	0.00	0.00
75185 - Travel-Auto	0.00	0.00	0.00	0.00	93.66	0.00	0.00	0.00	(93.66)	0.00	194.68	(194.68)
75300 - Peard Hotel	0.00	0.00	0.00	0.00	1,376.82	0.00	0.00	0.00	(1,376.82)	0.00	496.03	(496.03)
75325 - P-Card Airfare	0.00	0.00	0.00	568.60	0.00	0.00	0.00	0.00	(1,137.00)	0.00	297.00	(297.00)
<b>Total Travel</b>	<b>1,050.00</b>	<b>(1,050.00)</b>	<b>0.00</b>	<b>568.60</b>	<b>1,470.48</b>	<b>0.00</b>	<b>0.00</b>	<b>0.00</b>	<b>(2,607.48)</b>	<b>0.00</b>	<b>987.71</b>	<b>(987.71)</b>
<b>Total Expense</b>	<b>2,171.74</b>	<b>(8,062.05)</b>	<b>719.09</b>	<b>767.20</b>	<b>1,882.02</b>	<b>1,358.30</b>	<b>(169.85)</b>	<b>1,851.61</b>	<b>(2,616.20)</b>	<b>100.65</b>	<b>7,887.93</b>	<b>(1,046.12)</b>

**525540 - Index 264791 - Visual Arts Gift 22100 - Visual Arts**

55100 - Donations and Gifts	0.00	0.00	0.00	0.00	300.00	0.00	300.00	0.00	0.00	500.00	0.00	0.00
58115 - Interest on Investments	0.00	0.00	0.00	26.00	0.00	0.00	13.00	0.00	0.00	14.00	0.00	0.00
<b>Total Revenue</b>	<b>0.00</b>	<b>0.00</b>	<b>0.00</b>	<b>26.00</b>	<b>300.00</b>	<b>0.00</b>	<b>313.00</b>	<b>0.00</b>	<b>0.00</b>	<b>514.00</b>	<b>0.00</b>	<b>0.00</b>
62690 - Supplemental Pay	0.00	0.00	0.00	0.00	0.00	1,485.99	0.00	0.00	0.00	0.00	0.00	0.00
<b>Total Hourly Wages</b>	<b>0.00</b>	<b>0.00</b>	<b>0.00</b>	<b>0.00</b>	<b>0.00</b>	<b>1,485.99</b>	<b>0.00</b>	<b>0.00</b>	<b>0.00</b>	<b>0.00</b>	<b>0.00</b>	<b>0.00</b>
63015 - Workers Compensation Insur.	0.00	0.00	0.00	0.00	0.00	7.79	0.00	0.00	0.00	0.00	0.00	0.00
63025 - FICA	0.00	0.00	0.00	0.00	0.00	111.26	0.00	0.00	0.00	0.00	0.00	0.00
63035 - Retirement - TIAA-CREF	0.00	0.00	0.00	0.00	0.00	105.55	0.00	0.00	0.00	0.00	0.00	0.00
63055 - Retirement - State Non-	0.00	0.00	0.00	0.00	0.00	163.11	0.00	0.00	0.00	0.00	0.00	0.00
63085 - Unemployment	0.00	0.00	0.00	0.00	0.00	0.89	0.00	0.00	0.00	0.00	0.00	0.00
<b>Total Staff Benefits</b>	<b>0.00</b>	<b>0.00</b>	<b>0.00</b>	<b>0.00</b>	<b>0.00</b>	<b>388.60</b>	<b>0.00</b>	<b>0.00</b>	<b>0.00</b>	<b>0.00</b>	<b>0.00</b>	<b>0.00</b>

**Weber State University**  
**Revenue and Expenditure Summary by Month**  
**FY14**

	July	August	Sept	Oct	Nov	Dec	Jan	Feb	March	April	May	June
<b>525540 - Index 264791 - Visual Arts Gift 22100 - Visual Arts</b>												
71805 - Lab Supplies	0.00	0.00	0.00	0.00	0.00	0.00	0.00	0.00	0.00	0.00	0.00	66.36
71865 - Floral Arrangements	0.00	0.00	0.00	0.00	76.83	0.00	0.00	0.00	0.00	0.00	0.00	0.00
71865 - Luncheons/Receptions	0.00	0.00	0.00	0.00	0.00	1,022.08	0.00	0.00	0.00	0.00	94.75	169.64
71880 - Refreshments	0.00	0.00	66.94	0.00	0.00	0.00	0.00	0.00	0.00	0.00	0.00	0.00
71910 - Dues	0.00	0.00	2,380.00	0.00	0.00	0.00	0.00	0.00	0.00	0.00	0.00	0.00
71920 - Licenses and Permits	0.00	0.00	0.00	0.00	0.00	0.00	25.00	0.00	83.00	0.00	0.00	0.00
72130 - Campus Stores Expense	275.00	0.00	1,247.97	4.62	0.00	0.00	0.00	0.00	0.00	0.00	1,267.99	179.98
72335 - Services-Other	0.00	0.00	0.00	0.00	0.00	0.00	0.00	0.00	0.00	0.00	59.96	0.00
72405 - Advert-Publicity	0.00	0.00	0.00	0.00	0.00	0.00	0.00	0.00	689.21	0.00	0.00	0.00
72610 - Purchasing Card Exp	0.00	0.00	749.65	508.23	75.75	0.00	0.00	45.53	0.00	59.96	0.00	0.00
72720 - Reimbursements	0.00	200.00	(1,195.00)	0.00	0.00	0.00	0.00	0.00	0.00	0.00	0.00	0.00
<b>Total Current Expense</b>	<b>275.00</b>	<b>200.00</b>	<b>3,259.56</b>	<b>512.85</b>	<b>152.58</b>	<b>1,022.08</b>	<b>25.00</b>	<b>45.53</b>	<b>752.21</b>	<b>59.96</b>	<b>1,422.70</b>	<b>415.98</b>
74515 - Other Fuel and Power	0.00	0.00	0.00	0.00	0.00	0.00	0.00	0.00	0.00	0.00	0.00	0.00
<b>Total Fuel and Power</b>	<b>0.00</b>	<b>0.00</b>	<b>0.00</b>	<b>0.00</b>	<b>0.00</b>	<b>0.00</b>	<b>0.00</b>	<b>0.00</b>	<b>0.00</b>	<b>0.00</b>	<b>0.00</b>	<b>0.00</b>
<b>Total Expense</b>	<b>275.00</b>	<b>200.00</b>	<b>3,259.56</b>	<b>512.85</b>	<b>152.58</b>	<b>2,896.67</b>	<b>25.00</b>	<b>45.53</b>	<b>752.21</b>	<b>59.96</b>	<b>1,422.70</b>	<b>415.98</b>

<b>525943 - Index 264996 - Visual Communication 22100 - Visual Arts</b>												
55100 - Donations and Gifts	42.00	84.00	84.00	84.00	84.00	84.00	84.00	84.00	84.00	84.00	84.00	126.00
58115 - Interest on Investments	0.00	0.00	0.00	23.00	0.00	0.00	16.00	0.00	0.00	20.00	0.00	0.00
<b>Total Revenue</b>	<b>42.00</b>	<b>84.00</b>	<b>84.00</b>	<b>107.00</b>	<b>84.00</b>	<b>84.00</b>	<b>100.00</b>	<b>84.00</b>	<b>84.00</b>	<b>104.00</b>	<b>84.00</b>	<b>126.00</b>
71370 - Parts	0.00	0.00	0.00	0.00	0.00	0.00	0.00	0.00	0.00	0.00	0.00	101.60
71595 - Instruct Supply-Other	0.00	0.00	0.00	0.00	0.00	0.00	0.00	0.00	0.00	0.00	0.00	49.00
71865 - Luncheons/Receptions	0.00	0.00	0.00	0.00	0.00	0.00	0.00	0.00	0.00	27.72	999.67	0.00
72130 - Campus Stores Expense	0.00	0.00	0.00	0.00	0.00	0.00	0.00	0.00	18.08	147.94	0.00	0.00
72155 - Copying Costs	0.00	0.00	0.00	0.00	0.00	0.00	0.00	0.00	0.00	5.22	0.00	0.00
72720 - Reimbursements	(1,328.24)	0.00	0.00	0.00	(35.00)	0.00	0.00	0.00	0.00	0.00	0.00	0.00
<b>Total Current Expense</b>	<b>(1,328.24)</b>	<b>0.00</b>	<b>0.00</b>	<b>0.00</b>	<b>(35.00)</b>	<b>0.00</b>	<b>0.00</b>	<b>0.00</b>	<b>18.08</b>	<b>180.88</b>	<b>999.67</b>	<b>150.60</b>
75030 - FM Vehicle Fleet Expense	0.00	0.00	510.00	0.00	0.00	0.00	0.00	0.00	0.00	0.00	0.00	0.00
<b>Total Travel</b>	<b>0.00</b>	<b>0.00</b>	<b>510.00</b>	<b>0.00</b>	<b>0.00</b>	<b>0.00</b>	<b>0.00</b>	<b>0.00</b>	<b>0.00</b>	<b>0.00</b>	<b>0.00</b>	<b>0.00</b>

Weber State University  
Revenue and Expenditure Summary by Month  
FY14

	July	August	Sept	Oct	Nov	Dec	Jan	Feb	March	April	May	June
<b>525943 - Index 264996 - Visual Communication 22100 - Visual Arts</b>												
Total Expense	(1,328.24)	0.00	510.00	0.00	(36.00)	0.00	0.00	0.00	18.08	180.88	989.67	150.60
<b>529052 - Index 268151 - Nebeker, C Art History Award 22100 - Visual Arts</b>												
55100 - Donations and Gifts	0.00	0.00	0.00	0.00	0.00	0.00	3,000.00	0.00	0.00	0.00	0.00	0.00
Total Revenue	0.00	0.00	0.00	0.00	0.00	0.00	3,000.00	0.00	0.00	0.00	0.00	0.00
Total Expense	0.00	0.00	0.00	0.00	0.00	0.00	0.00	0.00	0.00	0.00	0.00	0.00
<b>529053 - Index 268155 - CJI Truscott 22100 - Visual Arts</b>												
55100 - Donations and Gifts	100.02	0.00	0.00	0.00	0.00	0.00	5,084.96	0.00	0.00	0.00	0.00	0.00
58115 - Interest on Investments	0.00	0.00	0.00	0.00	0.00	0.00	0.00	0.00	0.00	5.00	0.00	0.00
Total Revenue	100.02	0.00	0.00	0.00	0.00	0.00	5,084.96	0.00	0.00	5.00	0.00	0.00
76150 - Scholarships	0.00	321.50	0.00	0.00	0.00	0.00	321.50	0.00	0.00	0.00	0.00	0.00
Total Scholarships & Std Aid	0.00	321.50	0.00	0.00	0.00	0.00	321.50	0.00	0.00	0.00	0.00	0.00
Total Expense	0.00	321.50	0.00	0.00	0.00	0.00	321.50	0.00	0.00	0.00	0.00	0.00
<b>529655 - Index 268954 - Visual Art &amp; Design Alumni &amp; Friend 22100 - Visual Arts</b>												
76150 - Scholarships	0.00	150.00	0.00	0.00	0.00	150.00	0.00	0.00	0.00	0.00	0.00	0.00
Total Scholarships & Std Aid	0.00	150.00	0.00	0.00	0.00	150.00	0.00	0.00	0.00	0.00	0.00	0.00
Total Expense	0.00	150.00	0.00	0.00	0.00	150.00	0.00	0.00	0.00	0.00	0.00	0.00
<b>520704 - Index 280075 - Andelin, B Y Art Scholarship 22100 - Visual Arts</b>												
58115 - Interest on Investments	0.00	0.00	0.00	230.00	0.00	0.00	232.00	0.00	0.00	235.00	0.00	0.00
Total Revenue	0.00	0.00	0.00	230.00	0.00	0.00	232.00	0.00	0.00	235.00	0.00	0.00
76150 - Scholarships	0.00	525.50	0.00	0.00	0.00	525.50	0.00	0.00	0.00	0.00	0.00	0.00
Total Scholarships & Std Aid	0.00	525.50	0.00	0.00	0.00	525.50	0.00	0.00	0.00	0.00	0.00	0.00
Total Expense	0.00	525.50	0.00	0.00	0.00	525.50	0.00	0.00	0.00	0.00	0.00	0.00

Weber State University  
Revenue and Expenditure Summary by Month  
FY14

	July	August	Sept	Oct	Nov	Dec	Jan	Feb	March	April	May	June
<b>520245 - Index 280123 - Austad Mark &amp; Lola Visual Art Earn 22100 - Visual Arts</b>												
58115 - Interest on Investments	0.00	0.00	0.00	0.00	0.00	0.00	0.00	0.00	0.00	0.00	0.00	0.00
<b>Total Revenue</b>	<b>0.00</b>	<b>0.00</b>	<b>0.00</b>	<b>0.00</b>	<b>0.00</b>	<b>0.00</b>	<b>0.00</b>	<b>0.00</b>	<b>0.00</b>	<b>0.00</b>	<b>0.00</b>	<b>0.00</b>
<b>Total Expense</b>	<b>0.00</b>	<b>0.00</b>	<b>0.00</b>	<b>0.00</b>	<b>0.00</b>	<b>0.00</b>	<b>0.00</b>	<b>0.00</b>	<b>0.00</b>	<b>0.00</b>	<b>0.00</b>	<b>0.00</b>
<b>520711 - Index 280337 - Bryner, D Schol 22100 - Visual Arts</b>												
58115 - Interest on Investments	0.00	0.00	0.00	211.00	0.00	0.00	213.00	0.00	0.00	216.00	0.00	0.00
<b>Total Revenue</b>	<b>0.00</b>	<b>0.00</b>	<b>0.00</b>	<b>211.00</b>	<b>0.00</b>	<b>0.00</b>	<b>213.00</b>	<b>0.00</b>	<b>0.00</b>	<b>216.00</b>	<b>0.00</b>	<b>0.00</b>
76150 - Scholarships	0.00	567.50	0.00	0.00	0.00	567.50	0.00	0.00	0.00	0.00	0.00	0.00
<b>Total Scholarships &amp; Std Aid</b>	<b>0.00</b>	<b>567.50</b>	<b>0.00</b>	<b>0.00</b>	<b>0.00</b>	<b>567.50</b>	<b>0.00</b>	<b>0.00</b>	<b>0.00</b>	<b>0.00</b>	<b>0.00</b>	<b>0.00</b>
<b>Total Expense</b>	<b>0.00</b>	<b>567.50</b>	<b>0.00</b>	<b>0.00</b>	<b>0.00</b>	<b>567.50</b>	<b>0.00</b>	<b>0.00</b>	<b>0.00</b>	<b>0.00</b>	<b>0.00</b>	<b>0.00</b>
<b>520755 - Index 280580 - Dee Elizabeth Brown 22100 - Visual Arts</b>												
58115 - Interest on Investments	0.00	0.00	0.00	1,384.00	0.00	0.00	1,393.00	0.00	0.00	1,403.00	0.00	0.00
<b>Total Revenue</b>	<b>0.00</b>	<b>0.00</b>	<b>0.00</b>	<b>1,384.00</b>	<b>0.00</b>	<b>0.00</b>	<b>1,393.00</b>	<b>0.00</b>	<b>0.00</b>	<b>1,403.00</b>	<b>0.00</b>	<b>0.00</b>
76150 - Scholarships	0.00	2,750.00	0.00	0.00	0.00	2,750.00	0.00	0.00	0.00	0.00	0.00	0.00
<b>Total Scholarships &amp; Std Aid</b>	<b>0.00</b>	<b>2,750.00</b>	<b>0.00</b>	<b>0.00</b>	<b>0.00</b>	<b>2,750.00</b>	<b>0.00</b>	<b>0.00</b>	<b>0.00</b>	<b>0.00</b>	<b>0.00</b>	<b>0.00</b>
<b>Total Expense</b>	<b>0.00</b>	<b>2,750.00</b>	<b>0.00</b>	<b>0.00</b>	<b>0.00</b>	<b>2,750.00</b>	<b>0.00</b>	<b>0.00</b>	<b>0.00</b>	<b>0.00</b>	<b>0.00</b>	<b>0.00</b>
<b>520848 - Index 281590 - Douglas McFarland 22100 - Visual Arts</b>												
58115 - Interest on Investments	0.00	0.00	0.00	191.00	0.00	0.00	196.00	0.00	0.00	302.00	0.00	0.00
<b>Total Revenue</b>	<b>0.00</b>	<b>0.00</b>	<b>0.00</b>	<b>191.00</b>	<b>0.00</b>	<b>0.00</b>	<b>196.00</b>	<b>0.00</b>	<b>0.00</b>	<b>302.00</b>	<b>0.00</b>	<b>0.00</b>
<b>Total Expense</b>	<b>0.00</b>	<b>0.00</b>	<b>0.00</b>	<b>0.00</b>	<b>0.00</b>	<b>0.00</b>	<b>0.00</b>	<b>0.00</b>	<b>0.00</b>	<b>0.00</b>	<b>0.00</b>	<b>0.00</b>
<b>520397 - Index 281661 - Morrin Visual Arts 22100 - Visual Arts</b>												
58115 - Interest on Investments	0.00	0.00	0.00	841.00	0.00	0.00	847.00	0.00	0.00	861.00	0.00	0.00
<b>Total Revenue</b>	<b>0.00</b>	<b>0.00</b>	<b>0.00</b>	<b>841.00</b>	<b>0.00</b>	<b>0.00</b>	<b>847.00</b>	<b>0.00</b>	<b>0.00</b>	<b>861.00</b>	<b>0.00</b>	<b>0.00</b>

Weber State University  
Revenue and Expenditure Summary by Month  
FY14

	July	August	Sept	Oct	Nov	Dec	Jan	Feb	March	April	May	June
<b>520397 - Index 281661 - Morrin Visual Arts 22100 - Visual Arts</b>												
71905 - Conferences	0.00	0.00	0.00	0.00	0.00	0.00	0.00	0.00	0.00	0.00	1,295.00	0.00
<b>Total Current Expense</b>	<b>0.00</b>	<b>0.00</b>	<b>0.00</b>	<b>0.00</b>	<b>0.00</b>	<b>0.00</b>	<b>0.00</b>	<b>0.00</b>	<b>0.00</b>	<b>0.00</b>	<b>1,295.00</b>	<b>0.00</b>
75300 - Peard Hotel	0.00	0.00	0.00	0.00	0.00	0.00	0.00	0.00	0.00	0.00	3,411.76	0.00
75325 - P-Card Airfare	0.00	0.00	0.00	0.00	0.00	0.00	0.00	0.00	0.00	0.00	448.00	0.00
75350 - P-Card Travel	0.00	0.00	0.00	0.00	0.00	0.00	0.00	0.00	0.00	0.00	252.66	0.00
<b>Total Travel</b>	<b>0.00</b>	<b>0.00</b>	<b>0.00</b>	<b>0.00</b>	<b>0.00</b>	<b>0.00</b>	<b>0.00</b>	<b>0.00</b>	<b>0.00</b>	<b>0.00</b>	<b>4,112.42</b>	<b>0.00</b>
<b>Total Expense</b>	<b>0.00</b>	<b>0.00</b>	<b>0.00</b>	<b>0.00</b>	<b>0.00</b>	<b>0.00</b>	<b>0.00</b>	<b>0.00</b>	<b>0.00</b>	<b>0.00</b>	<b>5,407.42</b>	<b>0.00</b>
<b>520913 - Index 281960 - Prout Lani Berlin 22100 - Visual Arts</b>												
58115 - Interest on Investments	0.00	0.00	0.00	130.00	0.00	0.00	131.00	0.00	0.00	132.00	0.00	0.00
<b>Total Revenue</b>	<b>0.00</b>	<b>0.00</b>	<b>0.00</b>	<b>130.00</b>	<b>0.00</b>	<b>0.00</b>	<b>131.00</b>	<b>0.00</b>	<b>0.00</b>	<b>132.00</b>	<b>0.00</b>	<b>0.00</b>
<b>Total Expense</b>	<b>0.00</b>	<b>0.00</b>	<b>0.00</b>	<b>0.00</b>	<b>0.00</b>	<b>0.00</b>	<b>0.00</b>	<b>0.00</b>	<b>0.00</b>	<b>0.00</b>	<b>0.00</b>	<b>0.00</b>
<b>520917 - Index 282010 - Rich Blanche Vis Arts 22100 - Visual Arts</b>												
55100 - Donations and Gifts	0.00	0.00	0.00	0.00	0.00	1,000.00	0.00	0.00	0.00	0.00	0.00	0.00
58115 - Interest on Investments	0.00	0.00	0.00	645.00	0.00	0.00	651.00	0.00	0.00	658.00	0.00	0.00
<b>Total Revenue</b>	<b>0.00</b>	<b>0.00</b>	<b>0.00</b>	<b>645.00</b>	<b>0.00</b>	<b>1,000.00</b>	<b>651.00</b>	<b>0.00</b>	<b>0.00</b>	<b>658.00</b>	<b>0.00</b>	<b>0.00</b>
76150 - Scholarships	0.00	1,460.00	0.00	0.00	0.00	1,460.00	0.00	0.00	0.00	0.00	0.00	0.00
<b>Total Scholarships &amp; Std Aid</b>	<b>0.00</b>	<b>1,460.00</b>	<b>0.00</b>	<b>0.00</b>	<b>0.00</b>	<b>1,460.00</b>	<b>0.00</b>	<b>0.00</b>	<b>0.00</b>	<b>0.00</b>	<b>0.00</b>	<b>0.00</b>
<b>Total Expense</b>	<b>0.00</b>	<b>1,460.00</b>	<b>0.00</b>	<b>0.00</b>	<b>0.00</b>	<b>1,460.00</b>	<b>0.00</b>	<b>0.00</b>	<b>0.00</b>	<b>0.00</b>	<b>0.00</b>	<b>0.00</b>
<b>520386 - Index 282420 - Visual Arts Technology 22100 - Visual Arts</b>												
58115 - Interest on Investments	0.00	0.00	0.00	1,086.00	0.00	0.00	1,088.00	0.00	0.00	1,104.00	0.00	0.00
<b>Total Revenue</b>	<b>0.00</b>	<b>0.00</b>	<b>0.00</b>	<b>1,086.00</b>	<b>0.00</b>	<b>0.00</b>	<b>1,088.00</b>	<b>0.00</b>	<b>0.00</b>	<b>1,104.00</b>	<b>0.00</b>	<b>0.00</b>
62690 - Supplemental Pay	0.00	0.00	0.00	1,000.00	0.00	0.00	0.00	0.00	0.00	0.00	0.00	0.00
<b>Total Hourly Wages</b>	<b>0.00</b>	<b>0.00</b>	<b>0.00</b>	<b>1,000.00</b>	<b>0.00</b>	<b>0.00</b>	<b>0.00</b>	<b>0.00</b>	<b>0.00</b>	<b>0.00</b>	<b>0.00</b>	<b>0.00</b>
63015 - Workers Compensation Insur.	0.00	0.00	0.00	1.50	0.00	0.00	0.00	0.00	0.00	0.00	0.00	0.00

Weber State University  
 Revenue and Expenditure Summary by Month  
 FY14

	July	August	Sept	Oct	Nov	Dec	Jan	Feb	March	April	May	June
<b>520386 - Index 282420 - Visual Arts Technology 22100 - Visual Arts</b>												
63025 - FICA	0.00	0.00	0.00	74.84	0.00	0.00	0.00	0.00	0.00	0.00	0.00	0.00
63035 - Retirement - TIAA-CREF	0.00	0.00	0.00	142.00	0.00	0.00	0.00	0.00	0.00	0.00	0.00	0.00
63065 - Unemployment	0.00	0.00	0.00	0.60	0.00	0.00	0.00	0.00	0.00	0.00	0.00	0.00
<b>Total Staff Benefits</b>	<b>0.00</b>	<b>0.00</b>	<b>0.00</b>	<b>218.84</b>	<b>0.00</b>	<b>0.00</b>	<b>0.00</b>	<b>0.00</b>	<b>0.00</b>	<b>0.00</b>	<b>0.00</b>	<b>0.00</b>
<b>Total Expense</b>	<b>0.00</b>	<b>0.00</b>	<b>0.00</b>	<b>1,218.84</b>	<b>0.00</b>	<b>0.00</b>	<b>0.00</b>	<b>0.00</b>	<b>0.00</b>	<b>0.00</b>	<b>0.00</b>	<b>0.00</b>
<b>520970 - Index 282500 - Wilcox K Visual Arts 22100 - Visual Arts</b>												
58115 - Interest on Investments	0.00	0.00	0.00	243.00	0.00	0.00	245.00	0.00	0.00	247.00	0.00	0.00
<b>Total Revenue</b>	<b>0.00</b>	<b>0.00</b>	<b>0.00</b>	<b>243.00</b>	<b>0.00</b>	<b>0.00</b>	<b>245.00</b>	<b>0.00</b>	<b>0.00</b>	<b>247.00</b>	<b>0.00</b>	<b>0.00</b>
76150 - Scholarships	0.00	463.00	0.00	0.00	0.00	463.00	0.00	0.00	0.00	0.00	0.00	0.00
<b>Total Scholarships &amp; Std Aid</b>	<b>0.00</b>	<b>463.00</b>	<b>0.00</b>	<b>0.00</b>	<b>0.00</b>	<b>463.00</b>	<b>0.00</b>	<b>0.00</b>	<b>0.00</b>	<b>0.00</b>	<b>0.00</b>	<b>0.00</b>
<b>Total Expense</b>	<b>0.00</b>	<b>463.00</b>	<b>0.00</b>	<b>0.00</b>	<b>0.00</b>	<b>463.00</b>	<b>0.00</b>	<b>0.00</b>	<b>0.00</b>	<b>0.00</b>	<b>0.00</b>	<b>0.00</b>
<b>520734 - Index 282690 - Collett Farrell 22100 - Visual Arts</b>												
58115 - Interest on Investments	0.00	0.00	0.00	177.00	0.00	0.00	179.00	0.00	0.00	190.00	0.00	0.00
<b>Total Revenue</b>	<b>0.00</b>	<b>0.00</b>	<b>0.00</b>	<b>177.00</b>	<b>0.00</b>	<b>0.00</b>	<b>179.00</b>	<b>0.00</b>	<b>0.00</b>	<b>190.00</b>	<b>0.00</b>	<b>0.00</b>
76150 - Scholarships	0.00	611.50	0.00	0.00	0.00	611.50	0.00	0.00	0.00	0.00	0.00	0.00
<b>Total Scholarships &amp; Std Aid</b>	<b>0.00</b>	<b>611.50</b>	<b>0.00</b>	<b>0.00</b>	<b>0.00</b>	<b>611.50</b>	<b>0.00</b>	<b>0.00</b>	<b>0.00</b>	<b>0.00</b>	<b>0.00</b>	<b>0.00</b>
<b>Total Expense</b>	<b>0.00</b>	<b>611.50</b>	<b>0.00</b>	<b>0.00</b>	<b>0.00</b>	<b>611.50</b>	<b>0.00</b>	<b>0.00</b>	<b>0.00</b>	<b>0.00</b>	<b>0.00</b>	<b>0.00</b>
<b>520372 - Index 283060 - Utah Bic Art Col 22100 - Visual Arts</b>												
58115 - Interest on Investments	0.00	0.00	0.00	132.00	0.00	0.00	122.00	0.00	0.00	129.00	0.00	0.00
<b>Total Revenue</b>	<b>0.00</b>	<b>0.00</b>	<b>0.00</b>	<b>132.00</b>	<b>0.00</b>	<b>0.00</b>	<b>122.00</b>	<b>0.00</b>	<b>0.00</b>	<b>129.00</b>	<b>0.00</b>	<b>0.00</b>
<b>Total Expense</b>	<b>0.00</b>	<b>0.00</b>	<b>0.00</b>	<b>0.00</b>	<b>0.00</b>	<b>0.00</b>	<b>0.00</b>	<b>0.00</b>	<b>0.00</b>	<b>0.00</b>	<b>0.00</b>	<b>0.00</b>
<b>458000 - Index 510690 - Collett Farrell Visual Arts 22100 - Visual Arts</b>												
55100 - Donations and Gifts	0.00	0.00	0.00	0.00	0.00	1,000.00	0.00	0.00	0.00	0.00	0.00	0.00



Weber State University  
Revenue and Expenditure Summary by Month  
FY14

Page 20 of 20

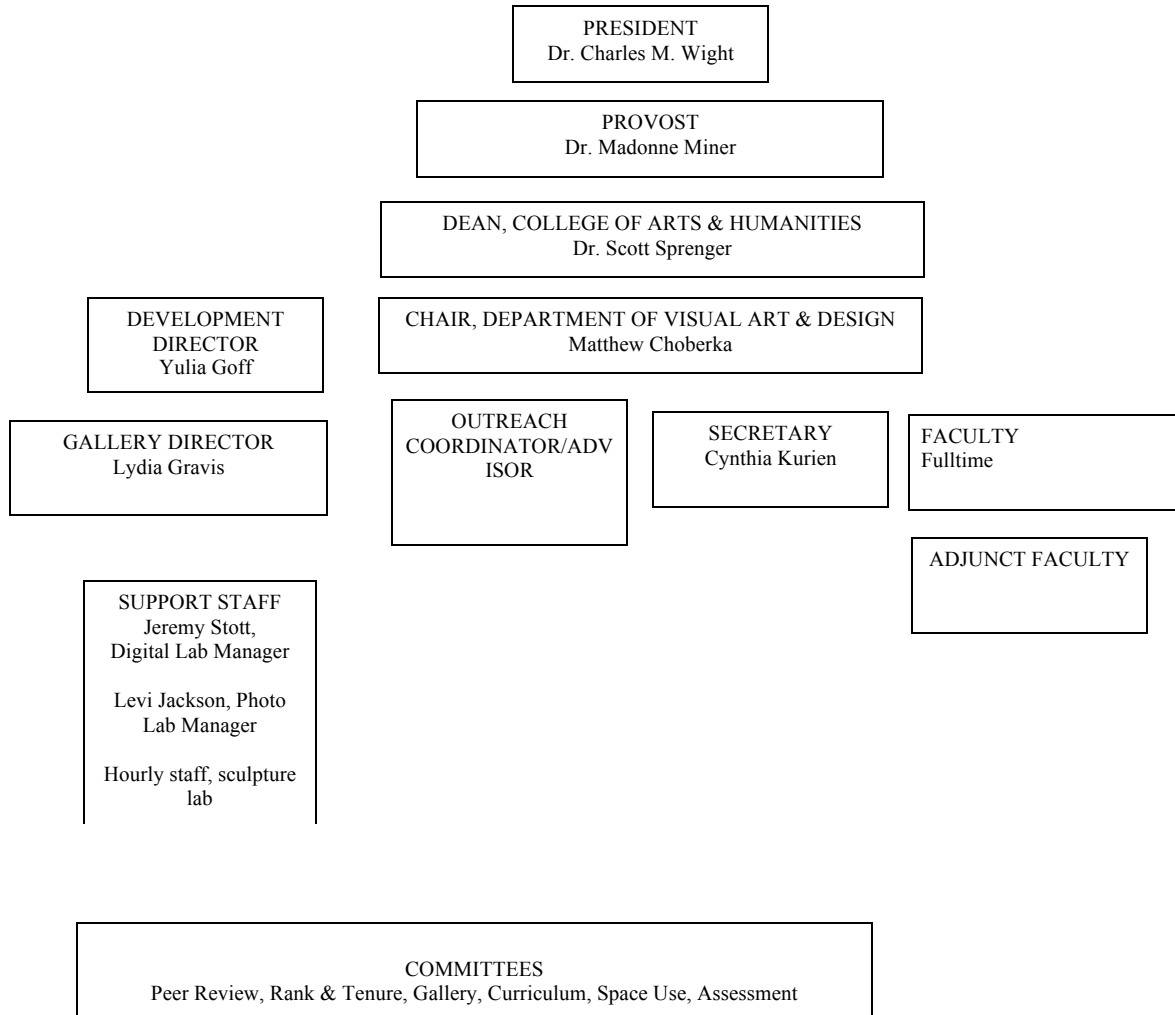
	July	August	Sept	Oct	Nov	Dec	Jan	Feb	March	April	May	June
<b>458000 - Index 510690 - Collett Farrell Visual Arts 22100 - Visual Arts</b>												
Total Revenue	0.00	0.00	0.00	0.00	0.00	1,000.00	0.00	0.00	0.00	0.00	0.00	0.00
Total Expense	0.00	0.00	0.00	0.00	0.00	0.00	0.00	0.00	0.00	0.00	0.00	0.00
<b>450210 - Index 610075 - Andelin, B Y Art Endow 22100 - Visual Arts</b>												
55100 - Donations and Gifts	0.00	0.00	0.00	0.00	0.00	100.00	0.00	0.00	0.00	2,000.00	100.00	0.00
Total Revenue	0.00	0.00	0.00	0.00	0.00	100.00	0.00	0.00	0.00	2,000.00	100.00	0.00
Total Expense	0.00	0.00	0.00	0.00	0.00	0.00	0.00	0.00	0.00	0.00	0.00	0.00
<b>450307 - Index 610123 - Austad Mark &amp; Lola Visual Art Endow 22100 - Visual Arts</b>												
55100 - Donations and Gifts	0.00	0.00	0.00	0.00	0.00	0.00	0.00	0.00	0.00	0.00	432,105.88	0.00
Total Revenue	0.00	0.00	0.00	0.00	0.00	0.00	0.00	0.00	0.00	0.00	432,105.88	0.00
Total Expense	0.00	0.00	0.00	0.00	0.00	0.00	0.00	0.00	0.00	0.00	0.00	0.00
<b>450760 - Index 610337 - Bryner, D Schol Endow 22100 - Visual Arts</b>												
55100 - Donations and Gifts	0.00	0.00	0.00	0.00	0.00	0.00	1,000.00	0.00	0.00	0.00	0.00	0.00
Total Revenue	0.00	0.00	0.00	0.00	0.00	0.00	1,000.00	0.00	0.00	0.00	0.00	0.00
Total Expense	0.00	0.00	0.00	0.00	0.00	0.00	0.00	0.00	0.00	0.00	0.00	0.00
<b>454190 - Index 612010 - Rich Blanche Vis Arts 22100 - Visual Arts</b>												
55100 - Donations and Gifts	0.00	0.00	0.00	0.00	0.00	0.00	1,000.00	0.00	0.00	0.00	0.00	0.00
Total Revenue	0.00	0.00	0.00	0.00	0.00	0.00	1,000.00	0.00	0.00	0.00	0.00	0.00
Total Expense	0.00	0.00	0.00	0.00	0.00	0.00	0.00	0.00	0.00	0.00	0.00	0.00

2. Proprietary (for profit) institutions must indicate net worth or equity and net income for the past three years. Indicate the distribution to stockholders through the past three years in dollar amounts, percentage of total institutional revenue, and percentage of return on equity or net worth. Provide copies of corporate income tax returns, both state and federal, for the past three years, and a list of officers, employees, and board members who have a significant equity relationship.

N/A

**D. Governance and Administration**

1. A table clearly outlining the internal organization of the art/design unit. If applicable, outline the administrative and operational relationships of the art/design unit to the parent institution. Include names as well as titles of individuals.



2. For independent schools of art/design, the table must include a profile of the Board of Directors that includes the names, business affiliations, and lengths of service. The table of organization should also include the Artistic Director, if applicable.

Not Applicable

3. Description or outline of the art/design executive's responsibilities and authority including teaching, creative work and research, performing, and community service, as well as administration.

The chair, like the faculty, is expected to maintain a balance of teaching, scholarship, and service. The standard teaching load for chairs at Weber State is half load. This varies among departments and at times within one department depending on the current projects and responsibilities. For example, for a time, while the Kimball Visual Arts Center was being constructed, my teaching load was eliminated. Theoretically the chair should be able to accommodate all of the additional responsibilities of being chair through the release of two classes. A half class load release load equals 12 contact hours per week in class and perhaps 6 hours of preparation time out of class. Thus the chair's job should be able to be covered in 18 hours per week. But the situation described by previous chair Jim Jacobs, in the 2010 NASAD self-study still largely holds true.

In 2010, Jim Jacobs wrote as follows in this self-study:

*"During spring semester 2009 I spent approximately 34 hours per week on standard administrative duties in the office. I also spent 6 hours per week in the evenings teaching Painting I and used 2-3 hours per week preparing for the class. No time was spent on creative or scholarly activities and more time was probably needed for administration. This semester I find myself spending 40+ work-week hours at school and 15 hours during the evenings and weekends on school work. Nine of those hours are dedicated to the class I am teaching."*

Some of responsibilities of the chair are,

- a. scheduling of classes
- b. review and approval of purchases/expenses
- c. the supervision of professional and classified staff, including the gallery director
- d. articulation of courses from other universities
- e. hiring and monitoring of adjunct faculty
- f. review graduating students transcripts and sign them off for graduation
- g. advocating on behalf of the department in conversations with the dean and provost
- h. resolving student faculty conflicts
- i. reviewing merit reports
- j. conducting post-tenure reviews
- k. participating in peer and rank and tenure reviews
- l. monitoring the website for accuracy
- m. overseeing course fee development
- n. overseeing the building: seeking repairs, overseeing access permissions,

4. Outline the governance and administrative responsibilities and relationships among faculty, staff, and administration.

The department operates with shared governance. Policies, curriculum, and other developments are discussed in faculty meetings and approved with a majority vote. Committees are established to work through preliminary ideas. Once refined, these ideas are proposed in a faculty meeting and either approved or rejected. Curriculum, Peer Review, Rank and Tenure, Gallery, Web Design, among others. Faculty members from the various studio areas are responsible for advising BFA students.

**Staff and their responsibilities.**

Department Secretary – Cynthia Kurien

This is an eleven-month Classified Staff position. Cynthia is responsible for the overall management of the department office. Some of her responsibilities include:

- a. Handling and distributing mail.
- b. Clearing students to register for classes which require departmental approval.
- c. Computer clearance of students for graduation.
- d. Scheduling classrooms and other spaces for special needs.
- e. Assigning lockers.
- f. Taking and transcribing minutes from departmental meetings
- g. Keeping the departmental records
- h. Proof and enter semester schedules
- i. Ordering textbooks.
- j. Monitoring and tabulating student evaluations of faculty.
- k. Supervising student office employees.
- l. Generating Payroll Action Requests (PARS) as directed by the chair.
- m. Generating Purchase Requests for department purchases.
- n. Reconciling department Purchasing Card credit purchases each month.
- o. Tracking and reconciling all budgets (11) in the department.
- p. Prepare scholarship applications; prepare scholarship portfolio evaluation for faculty.
- q. Preparing correspondence and other documents
- r. Aide faculty and visitors in travel arrangements
- s. Supervise student assistant: hourly, workstudy, activity scholarship recipients, lab assistants, gallery assistants.
- t. Time and Attendance: models, student hourly/workstudy, lab assistance, gallery assistants, tracking errors and hours on TAS system, transmitting, payroll, me
- u. Team participation/facilitation: orienting new faculty/adjunct instructors: keys, books, rolls, processing wildcards, assist in computer access, usernames, email and other facilities as needed.

**Gallery Director- Lydia Gravis**

Lydia Gravis (b. 1980 Spokane, Washington) earned a BA with a dual major in Visual Arts and Human Studies from Warren Wilson College in Asheville, NC in 2003, and a

MFA in Interdisciplinary Visual Arts from the Art Institute of Boston at Lesley University in 2013. Her work has been exhibited in numerous US cities. In addition to her fine art practice, she works as Director of the Mary Elizabeth Dee Shaw Gallery at Weber State University and occasionally teaches as an adjunct instructor in the Department of Visual Art and Design. She lives in Ogden, Utah with her husband and daughter.

**Outreach Coordinator/Academic Advisor** (new hire pending)

Advising

Duties include:

- a. Advising students in one-on-one sessions. This includes all majors until they have been admitted into the BFA program.
- b. leading building tours for prospective students as part of Outreach or just in general for groups.
- c. General walk in questions
- d. help maintain the student advising sheets, more majors and minors.

Outreach

Duties include:

- a. Coordinating and running Fabulous Fridays lessons. I also help teachers during these sessions.  
scheduling buses to pick up visiting students
- b. organizing and running Senior Day/Day @ DOVA for HS students
- c. all administrative aspects of the High School exhibit, including getting information to teachers, working with the designers on programs/awards, coordinating other UT university involvement, obtaining donations for prizes, organizing the program.
- d. obtaining donations for prizes for student show.
- e. Working on grants especially in conjunction with Development and OSP Offices.
- h. working with and helping coordinate the Art Guild on outreach projects, such as for the Ogden City Arts Festival
- k. do all related budgeting including requisitions and PARs. Also complete all check request forms for award winners.

**Digital Lab Manager, Jeremy Stott**

- a. responsible for the overall operation of the DOVAD Digital Lab. This includes:
- b. installation and maintenance of software
- c. research and recommend hardware purchases

- d. maintain and troubleshoot hardware
- e. print color projects for students
- f. oversee the B&W printer system
- g. aid students with software questions
- h. order materials necessary for printing and oversee the printing budget
- i. teach 1 class per semester
- j. aide the faculty in hardware and software issues in the building
- k. help maintain the departmental website
- l. oversee student lab aides

**Photo Technician, Levi Jackson**

- a. responsible for the overall operation of the Photography darkrooms and studios. This includes:
  - b. installation and maintenance of software
  - c. research and recommend hardware purchases
  - d. maintain and troubleshoot hardware
  - e. help students print digital output
  - f. aid students with software questions
  - g. order all materials necessary for the photography labs, including chemistry, paper, inks, etc.
  - h. teach 1 class per semester
  - i. aid the faculty in hardware and software issues in the building
  - j. oversee student lab aides

**Student Aide in the office-responsibilities**

They answer phones, direct students/visitors to where they need to go (2 weeks in the semester or 2 weeks before the end of semester phones are the busiest).

They perform various clerical support duties for the department.  
Before new student orientations they create orientation folders.

- 5. Present policies regarding the term of the chief art/design executive and reviews of the chief art/design executive.

The department chair is appointed by the dean after receiving feedback from the faculty. In the past 30 years the dean has always selected the recommendation of the faculty. The term of service is 3 years. Many chairs serve 2 or even 3 consecutive terms.

- 6. Description or outline of communication policies and patterns within the art/design unit.

In addition to bi-weekly departmental faculty/staff meetings, many discussions, deliberations, and collaborations now take place electronically, primarily supported by

the googleapps platform, and by file-sharing. In this way, many aspects of departmental business can be conducted between formal meetings, allowing for some streamlining of the ever-increasing administrative and service burden in the department.

7. Description or outline of the extent of clerical, professional, and technical support containing the names of staff positions and a brief overview of principal responsibilities.

See above.

8. List of programs offered that are jointly administered with other units—for example, art/design education programs, graduate programs, multidisciplinary programs, etc.

Art Education BFA Degree, and Art Education Composite Degrees are jointly administered with the Moyes College of Education. Students typically complete their art major requirements, up to and including the BFA capstone Thesis exhibition, and then move on to student teaching and licensure requirements in the College of Education.

## **E. Faculty and Staff**

1. Policies and procedures: (a) for calculating faculty loads, including credit for the direction of graduate dissertations, projects, research, etc.; (b) for evaluating teaching effectiveness of art/design faculty; (c) regarding faculty development; (d) regarding the number of technical and support staff.

The normal teaching load for Weber State University faculty is 24 semester hours per academic year. The credit-hour base for the teaching load is computed using the following considerations:

### 1. Courses that Require Regularly Scheduled Instruction

The instructor accrues the same number of credit hours of instructional load that the course generates for students taking the course.

### 2. Activity Courses and Supervision of Laboratory Experiences

Instructors accrue one-half of the time spent in class as part of the instructional load assignment.

### 3. Shared Course Responsibilities

For courses that are team taught, or for which there are components beyond the scheduled instructional times, the instructor receives credit for that component directly taught or supervised.

### 4. Directed Readings, Special Problems, Individual Studies and Research Studies

The instructor accrues one-fourth credit hour of teaching load for each student credit hour supervised. During any semester of the academic year, no more than three credit hours of teaching load may accrue in this area. (DOVA decided to offer no credit to faculty for independent study)



B. TEACHING OVERLOAD

1. A regularly contracted faculty member may teach a maximum of 7 credit hours per semester up to a maximum of 12 credit hours per academic years (two semesters).
2. Uncompensated courses (directed readings, clinical supervision, internships, etc.) are exempt from the overload limit.
3. Overload teaching must be approved by the department chair and the dean. Department chairs and deans may restrict overload teaching to a level less than the maximums described in PPM 4-6, B.1. Department chairs and deans are also responsible for determining enrollment limits in courses. In instances where the department chair and dean cannot reach an agreement on enrollment limits, the decision will be referred to the provost.
4. Exceptions may be made to PPM 4-6, B. 1 and 2 for a limited time when extenuating circumstances exist. Exceptions will be considered on a case by case basis. Such exceptions must be approved in advance by the department chair and dean.

C. OTHER PROFESSIONAL ACTIVITIES

In addition to the normal 24-semester hours of teaching, faculty members are expected to assume other professional responsibilities such as advising students, maintaining office hours, performing public service, engaging in research and other scholarly activities and serving on committees. At the discretion of the departments and colleges, teaching time may be reassigned. Reassigned activities may include specific courses (e.g., student teaching supervision), specific program requirements (e.g., nursing, graduate programs, etc.), specific tasks in faculty governance (e.g., chairing a department or program, chairing major Faculty Senate committees, directing programs initiated by the President or Provost, etc.). The amount of time to be reassigned is to be made in accordance with existing policies of the university.

2. A chart or other format providing the following for each faculty member: (a) name; (b) year hired; (c) rank; (d) tenure status; (e) degrees or credentials earned with institution, majors, and emphases; (f) a short biographical summary – if this information is published in the catalog or on the institution's Web site, please provide a citation here; and (g) if art/design education faculty, Pre-K–12 teaching experience.

Please separate and indicate full-time and part-time faculty.

Curriculum vitae for each full-time and part-time member of the art/design faculty may be included in the institution's *Management Documents Portfolio* for ease of compiling the above information, but a full curriculum vita for each faculty member is not necessary for the final submittal of the Self-Study.

**DOVA Full Time  
Faculty**

<b>Name</b>	<b>Year Hired</b>	<b>Rank</b>	<b>Tenure Status</b>	<b>Institution</b>	<b>Degree</b>	<b>Major</b>	<b>Studio lec/week</b>
Banerji, Naseem	1993	Prof.	Tenured	University of Iowa	PhD	Art History	6
Bauer, Micah	2015	Asst.	2 <sup>nd</sup> year	BYU	MFA	Graphic Design,	6
Biddle, Mark	1981	Prof.	Tenured	Indiana State Univ.	MFA	Graphic Design	6
Choberka, Matthew	2005	Prof.	Tenured	Indiana University	MFA	Painting	2
Clarkson, Larry	2007	Assoc.	Tenured	University of Illinois	MFA	Graphic Design	6
Crow, Paul	2011	Asst.	Tenure/promotion pending 2017	USC	MFA	Interdisciplinary	6
Horsley, Scott	2015	Asst.	Visiting	UC San Diego	MFA	Painting and Drawing	6
Huxhold, Dianna	2016	Asst.	1 <sup>st</sup> year review	Indiana University	PhD	Art Education, preK-12 exp	6
Manley, Jason	2011	Asst.	3 <sup>rd</sup> year review	University of Arizona	MFA	Sculpture	6
Morin, Molly	2012	Asst.	3 <sup>rd</sup> year review	Notre Dame	MFA	Sculpture/digital media	4
Pagel, Angelika	1986	Prof.	Tenured	UC Berkeley	PhD	Art History	6
Stevenson, Kathleen	2001	Prof.	Tenured	Notre Dame	MFA	Printmaking	6
Winegar, Joshua	2008	Associate	Tenured	Columbia College Chicago	MFA	Photography	6
Wolochowicz, Stephen	2010	Asst.	Tenure/promotion pending 2017	Miami University, Ohio	MFA	Ceramics	6

**DOVA Part Time Faculty**

<b>Name</b>			<b>Institution</b>	<b>Degree</b>	<b>Major</b>	<b>Area</b>	
Adams Amy			Adjunct Auburn	MFA	Sculpture	Non Major, Foundations	
Bradshaw, Kathryn			Adjunct PCNW	MFA	Sculpture	Non Major, Foundations, Printmaking	
Crum Andrew			Adjunct Montclair State University	MAT-ArtEd	Art Education	Non Major	
Emerich William			Adjunct University of Utah	MFA	Painting	Non Major, Foundations	
Dolberg Daniel			Adjunct University of Utah	MFA	Painting	Non Major, Foundations	
Gilson Jake			Adjunct Arizona State University	MFA	Sculpture	Non Major, Foundations	
Harper, Jamie			Adjunct Weber	BFA	Photography	Photography	
Jackson, Levi			Adjunct RISD	MFA	Photography	Photography, Foundations	
Kennedy, Anne			Adjunct RISD	MFA	Studio	Non Major	
Krebs, Caralynne			Adjunct SAIC	MFA	Fiber and Material Studies	Foundations	
Larsen, Tatiana			Adjunct Ohio State	MFA	Art and Technology	Foundations	
Lenzi, Kristina			Adjunct Tufts	MFA	Performance	Non Major, Foundations	
Lindquist, Dianna			Adjunct San Francisco Art Institute	MFA	Drawing	Foundations	
McIntire, Jake			Adjunct PNCA	MFA	Collaborative Design	Foundations	
Pedroza, Ya'el			Adjunct CSU Long Beach	MFA	Printmaking	Non Major, Foundations	
Reimussel Peggy			Adjunct Weber State	BA	Two Dimensional	Non Major	
Reynolds Gretchen			Adjunct University of Utah	MFA	Painting	Non Major, Foundations	
Rippling Kent			Adjunct Utah State University	MFA	Photography	Photography	
Stecklein Brain			Adjunct Weber State	MA	Education	Non Major	
Stones Steve			Adjunct Utah State University	MFA	Painting	Non Major	
Stott Jeremy			Adjunct Weber State University	MPC	VisCom	Graphic Design, Foundations	

Titus, Sarah			Adjunct	University of Washington	PhD	Classical Art and Archaeology	Non Major	
Venegas, Rene			Adjunct	University of Barcelona	MA	Spanish Literature	3D, Small Metals	
Watkins, Adam			Adjunct	University of Utah	MFA	Photography	Photography	

## Full-time (Contract) Faculty

**Note: Complete faculty CVs are included as pdfs on our Program Review web page:**

[http://www.weber.edu/assessment/2016\\_2017\\_Documents/DOVAD\\_pr1617.html](http://www.weber.edu/assessment/2016_2017_Documents/DOVAD_pr1617.html)

### Naseem Banerji

Naseem A. Banerji: Master's degree in Ancient Indian Art and Culture from the University of Calcutta, 1985; PhD in Ancient & Medieval Art History, University of Iowa, 1993. Dissertation: "The Architecture and Architectural Decoration of the Adina Mosque, Pandua, West Bengal, India: The Problem of the Conjoined Buddhist, Hindu and Islamic Motifs in the *Mihrab* Niches". Joined Department of Visual Arts at Weber State University 1993. Courses Taught: 3100 Art & Architecture of the Islamic World; 3800 Art & Architecture of Japan; 3700 Art & Architecture of China; 3600 Art & Architecture of India; 2040 Art & Architecture of Asia; 1010 Introduction to the Visual Arts. Recent award: John & Telitha E. Lindquist Fellowship for Creative & Artistic Endeavors Award for Research on "Twelfth & Thirteenth Century Hoysala Architecture in Karnataka India: The Influence of the Bhakti Movement on Temple Architecture," Spring 2012. Recent Conference Presentations: 1. "The Influence of the *Alvars* and Ramanujacharya on Karnataka Temples of the Twelfth and Thirteenth Centuries," at the Fifty-third Western Conference of the Association of Asian Studies at the University of Utah, Salt Lake City, October 9, 2015. 2. "Basavannacharya's *Virasaivism* and its Impact on Multi-Shrined *Shiva* Temples of Medieval Karnataka, India," at the Eighth South Asian Studies Association Conference at Westminster College, Salt Lake City, April 13, 2014.

### Micah Bauer

Micah Bauer is a California native residing in Utah since 1998. He received his MFA in graphic design from Utah State University in 2015 and his BFA from Brigham Young University in 2003. He was awarded the Illumina Gold award in 2003 for his submission to the Artist's Call for Justice poster design competition judged by Woody Pirtle and Seymour Chwast. Micah has worked as a graphic/interacitve designer for Focus Design and Axis41 and as an art director for Radi8 Creative. Micah is an active proponent of self-initiated design

projects like his year-long online Graphic Journal and his The Self poster series. His work deals primarily with identity, authenticity, and perception as they relate to creative work.

### **Mark Biddle**

Mark Biddle received an MFA from Indiana State University. He wrote and taught graphic design curriculum at St. Mary of the Woods College, also in Indiana, prior to joining the faculty at Weber State in 1981. Mark co-coordinates the visual communication program at WSU and served as department chair from 2002–2005. On the private side, he has performed design services for political candidates, the National Park Service, the U.S. Forest Service, Weber State University, and a range of non-profit and commerce-based clients. Most recently, Mark has co-delivered presentations on social responsibility in design' to conferences in New York, England, and Germany.

### **Matthew Choberka**

Chair and Associate Professor of Art  
MFA 2005 in Painting, Hope School of Fine Arts, Indiana University

Matt's paintings and mixed-media works engage the instability and complexity of the contemporary world, by way of a serial approach to the image that hybridizes the languages of drawing and painting. His work has been exhibited nationally and internationally, with recent exhibitions at the Torrance Art Museum in California, galleryELL in Brooklyn, Governor's Island Art Fair in New York Harbor, Raid Projects in Los Angeles, and Beaux-Arts des Ameriques in Montreal, Canada. His work is currently represented by galleryELL and by Beaux-Arts des Ameriques. Matthew lives with his wife Angela, daughter Olivia, and son Luca in Ogden.

### **Larry Clarkson**

Larry Clarkson has been a successful graphic designer and design communications consultant for more than thirty years. He has won more than 300 awards of excellence, and his logos, packaging, and designs have appeared in numerous national and international design books and publications including Print and Graphis among others. He received his BFA degree in Graphic Design from the University of Utah, and his MFA degree in Visual Communications from the University of Illinois. In 2005 Larry was hired as Assistant Professor in the Department of Visual Arts at Weber State University, where he is now co-director of the Visual Communications Program. Larry has served on the board of numerous art and design organizations, including president of the Salt Lake Art Directors Club, and co-founder and first director of the Entrada Institute.

### **Paul Crow**

Paul Crow received his BA from the University at Texas, Austin and his MFA from the University of Southern California. He is a practicing artist working in photography, video and installation, and an Assistant Professor of Art at Weber State University in Ogden. At WSU

Crow teaches department foundation courses, introductory photography and video, advanced photography and time-based practices, Critical Issues and capstone courses.

### **Scott Horsley**

Scott's paintings and drawings look at how technologies from every age of human civilization exert control, loudly or subtly, over the choices we make, affecting our personal interactions, our thoughts and our beliefs. His work has appeared nationally in solo and group shows, with recent shows in Chicago, Los Angeles, San Francisco and San Diego.

Scott is a Visiting Assistant Professor, teaching drawing and painting. Previously, he lived and made work in New York and taught at the University of Florida.

Website: [www.scottrhorsley.com](http://www.scottrhorsley.com)

### **Dianna Huxhold**

Dianna Huxhold is an Assistant Professor of Art Education at Weber State University. She earned a Ph.D. in Curriculum & Instruction, Art Education, from Indiana University. Prior to joining the Weber State faculty Dianna was a K-12 Art Educator in public schools, a Lecturer at Indiana University-Purdue University Fort Wayne, and an Associate Instructor at Indiana University Bloomington. She presents research at state, national, and international venues such as the National Art Education Association and the International Congress of Qualitative Inquiry. In 2016, Dianna was nominated for the Elliot Eisner Doctoral Research Award. Her research interests include teacher education, student/teacher relationships, art integration, and visual research with topic-related manuscripts published in journals such as Art Education, Art Education Policy Review, and the Journal of Visual Inquiry: Learning and Teaching Art.

### **Jason Manley**

Jason Manley creates drawings, sculptures and public artworks that contradict the inherent functionalism of the built environment. He repurposes industrial materials such as concrete, steel, and found objects for poetic means of expression and to explore language as a physical form within the public realm. His work has been exhibited nationally and internationally including recent solo exhibitions at Valerie Lambert Gallery in Brussels, Museum of Public Fiction in Los Angeles, and CUAC in Salt Lake City, with an upcoming solo exhibition at Snow College, in Ephraim, Utah in 2016. His temporary and permanent public art projects have been displayed in California, Nebraska, and Iowa. An MFA graduate of the University of Arizona, he has been a fellow at the Skowhegan School of Art, the Bemis Center of Contemporary Art, Illinois State University, and a residency awarded at Sculpture Space in New York. He has received grants from the Pollock Krasner Foundation, Arizona Commission of the Arts, and several research grants from Weber State University. He is an Assistant Professor of Art, Head of Sculpture, in the Department of Visual Art and Design at Weber State University.

### **Molly Morin**

Molly Morin is Assistant Professor of Art at Weber State University. She received her MFA from Clemson University and her BFA from The University of Notre Dame. Prior to joining the faculty at Weber State University, she taught as adjunct faculty at Clemson University and Tri-county Technical College, as a Visiting Assistant professor at The University of Notre Dame, and as an Assistant Professor at Millsaps College in Jackson, MS. Recent research grants include the Research, Scholarship and Professional Growth grant at Weber State University (2013), the Faculty Travel Grant at Millsaps College (2012) and an Adjunct Grant from the Institute for Scholarship in the Liberal Arts at the University of Notre Dame (2011). She has presented lectures at the Notre Dame Alumni Sculpture Symposium (2014), the Society for Literature, Science and the Arts (2013), and the College Art Association Conference (2011). In the last three years She has been a visiting artist at Clemson University, Whittenberg University, Lamar University, and the University of Dallas. Recent solo and two person shows include *Traces of Awe* at Whittenberg University, *Fragile Traces* at The University of Dallas, *Red Balloons* at The Clemson Center for Visual Arts, Greenville, and *Invisible Things* at Whitespace Contemporary Gallery, Ogden. She uses digital methods, including computer coding, 3D modeling, and digital photo-editing to produce work that explores the difficult relationship between information and meaning. Her projects visualize data sets generated from a wide range of texts, from poetry to text messages, and reflect on the impact of communication technology on daily life.

### **Angelika Pagel**

Angelika Pagel was born and raised in Germany but has been a long-time resident of Utah. She received her PhD in Art History from the University of California at Berkeley and has published articles on European Modernism of the early 20th century and emerging Utah artists. Her interest in the traditional and contemporary arts of indigenous cultures inspired her to develop a course in "Native American Art of the Southwest" which she teaches at Weber State University, alongside classes on modern and contemporary art. Land Art and Public Art are two of her favorite areas of study.

### **Kathleen "K" Stevenson**

K (Kathleen) Stevenson received her BA in Visual Arts from the College of St. Benedict/St. John's University, St. Joseph, MN (1974) and her MFA, printmaking emphasis, from the University of Notre Dame (1999, "Embedded Memory.") She

joined WSU in 2001 as director of the Art Education area, where she was instrumental in the establishment of the Sorenson Endowment and the Arts Learning Collaborative. Beginning fall of 2015, she transitioned to head of the

printmaking area. Since joining WSU, she has exhibited in more than a half a dozen solo or two person exhibitions, participated in over three-dozen national and international, juried exhibitions, and been a part of over a dozen portfolio exchanges. In preparation of printmaking director, Stevenson, attended a woodprint workshop (Oct 2014) with Karen Kunc (Constellations, Lincoln, NE) and certified in aluminum plate lithography (July 2015) at the Tamarind Institute, University of New Mexico. She continues her academic engagement in two interests- curating (“Mark by Mark,” Alice Gallery, Utah Division of Arts & Museums SLC, March- May, 2014 & “Spanning Tradition,” Shepard Union Gallery, Weber State University, Oct 2-Nov 4, 2014) and service learning.

She is an active member of SGCI (Southern Graphics Council International), MAPC (Mid America Print Council) and Rocky Mountain Print Alliance (RMPA.)

### **Josh Winegar**

Josh Winegar was born and raised just outside Salt Lake City, Utah. He received a BFA degree from Weber State University in 2002 and a MFA degree from Columbia College Chicago in 2007. He has exhibited works in numerous US cities and internationally. He is the recipient of several awards including a Follet Fellowship, an Albert P. Weisman Memorial Project Grant, and the 2009 Utah Arts Council Fellowship. In addition to his fine art practice, he maintains a commercial career, creating works for a variety of clients. He lives with his partner Peggy and their two children in Ogden, Utah where he is an Assistant Professor of Photography at Weber State University.

### **Stephen Wolochowicz**

Stephen Wolochowicz was born and raised in Central New Jersey. He completed his BFA in ceramics from The University of Delaware in 2000. He conducted post-bac studies at San Diego State University before entering Graduate School in 2002. He completed an MFA in Ceramics from Miami University of Ohio in 2005. In 2005, he was a lead assistant to artists Vratislav K. Novac and Susan Ewing on their large-scale sculpture installation *Konvergence* and their public art project *The Crystalline Tower* located in Cincinnati. He was Central Michigan University’s *Barstow Artist in Residence* in 2006. He remained at CMU as a Visiting Assistant Professor of Art for an additional year. For three years after that he was Concurrent Assistant Professor of Art and Ceramics Area Technician at The University of Notre Dame, 2008-2011. Wolochowicz is currently Assistant Professor of Art at Weber State University and has been since 2011. Some recent notable one and two-person exhibitions include: Goshen College, Clemson University, University of Notre Dame, Lakeside Gallery West, White Space Gallery, M.T. Burton Gallery.



## **Adjunct Faculty**

### **Amy Adams**

Born and raised in Alabama but has been a long-time resident of Utah. She received her MFA in Sculpture from the University of Colorado at Boulder. She is an adjunct professor in the Department of Visual Arts at Weber State teaching Color Theory, 3D Design and Non-Art Major courses on line. Her interest in mixed media sculpture has led her to explore a diverse set of techniques, materials and subject matter. She has been a finalist and recipient of The Utah Arts Council Fellowship Award. She currently exhibits her work at A Gallery in Salt Lake City, Utah.

### **Kathryn Bradshaw**

Kathryn Bradshaw is an Adjunct Professor of Art at Weber State University. She received her MFA from a joint program between The Pacific Northwest College of Art and The Oregon College of Art and Craft and her BFA at Weber State University. Her work is rooted in the craft of Book Binding. After a successful start developing an experimental course in Book Arts, she is currently involved in building a permanent place in the WSU Print Making Department for the Book Arts.

### **Andrew Crum**

Andrew Crum, a WSU Fine Arts Adjunct Instructor since 1998, received his Master of Arts in Teaching- Art Education (MAT-ArtEd) from Montclair State University and a Bachelor's of Fine Arts Degree with an emphasis in Crafts and Art History from Virginia Commonwealth University. Prior to joining the faculty at WSU he operated his own jewelry and design business in NYC and was a member of the Penland School Core Fellowship program in North Carolina. He currently works in printmaking and photography, exploring how the fragility and fluid nature of memory is mirrored in the process of art making. He also designs jewelry and housewares in his home studio and currently lives in Milton, MA with his two girls.

### **Daniel Dolberg**

Daniel Dolberg has served as an adjunct professor of art at Weber State University for the past 11 years. Son of a college professor himself, Daniel has traveled extensively throughout Europe as well as Australia, New Zealand, and North Africa. He received his MFA in painting from the University of Utah and his BFA from Brigham Young University. Over the years his work has ranged from large abstract cubist paintings, reminiscent of the work of Bauhaus artists Lyonel Feininger and Franz Marc, to impressionistic realism in the vein of the late 19<sup>th</sup> and early 20<sup>th</sup> century American Impressionists. Running through all of his artwork is a common vein that conspicuously resonates with the impact of

historical art movements, but with a Postmodern twist. A recent painting series involved the depiction of historical subjects such as the presidents of Mount Rushmore fame and early 20<sup>th</sup> century Native Americans, with the subjects loosely painted over clear-acrylic-sealed maps adhered to panels, with map elements still coming through, asserting the prominent connection between the subjects and the lands depicted by the maps. Other recent forays into landscape, sunsets, and clouds seek to find a balance between the emotion of abstraction and the clarity of representation. Daniel's work can be found in the personal collections of prominent citizens around the Salt Lake valley, as well as in Brigham Young University's Permanent Art Collection. Three of his large paintings are on display in a prominent location on the second level of BYU's Harold B. Lee Library. Daniel continues to pursue his interests in teaching at WSU while working on commissioned paintings in his home studio, completing mainly figurative works and impressionist landscapes.

### **William Emerich**

Born in Chillicothe, Missouri. William is the first member of his family to pursue a university education.

William completed his undergraduate study in painting at the University of Kansas with an emphasis in observational drawing and painting of the human figure. William received a BFA in 1994, and moved to Chicago in 1995. William began exhibiting his paintings in Chicago galleries in 1996. While living in Chicago, William received an Arts grant from the City of Chicago and the Illinois Arts Council, worked as a guest curator, and regularly exhibited his paintings.

In 2002, William moved to Salt Lake City, where he currently lives. William taught beginning drawing and painting classes while completing his graduate study at the University of Utah. William presented his MFA Thesis Exhibition in 2004. He opened the exhibition with a public lecture: *Gray City: The Private Experience of Public Space*. In 2005, William gave the opening talk for the exhibition *In Transit: The Artwork of Maya Chachava* at the Utah Museum of Fine Arts.

William began teaching painting in 1987 at the Lawrence Arts Center, Lawrence, Kansas. Since moving to Salt Lake City, William has continued exhibiting his paintings in Chicago while teaching: Beginning Drawing, Beginning Painting, Foundations, at the University of Utah; Beginning Drawing, Beginning and Advanced Painting, Beginning and Advanced Figure Painting, Independent Study at Westminster College. William presently teaches Design: 2D, and Drawing I at Weber State University.

### **Jake Gilson**

Looking to remind myself the discipline of observation, neutrality, patience and volition. To make and experience what is beyond ethical understanding.

### **Jamie Harper**

Jamie Harper is a Utah based artist working with second hand and discarded objects to create photographs, quilts, and soft sculptures. She resurrects obsolete artifacts and showcases them in a way that redefines their ideology. She received her BFA from Weber State University, and has since shown work in a variety of curated shows. Most recently, *The Place Accepts Us, and We Accept the Place*(2016). For the last year she has taught at Weber State University as an adjunct faculty member.

### **Levi Jackson**

Levi Jackson uses an interdisciplinary approach to his work combining photography, installation with nods to performance. His work revolves around the western landscape, where he grew up, and challenges the historical perceptions that the west has been put under by buttressing it with contemporary practices. Levi serves as the Photography Lab Manager and an Instructor. He received his MFA from Pratt Institute (2013). Levi has shown work nationally and internationally with a solo exhibition at the Springville Museum of Art (2016), Utah Museum of Contemporary Art (2015) and group exhibitions at Gerish Stiftung Foundation in Germany (2015), HPGRP Gallery (2012). He has published a variety of photographic publications, with the newest set to be released in early 2017.

### **Cara-Lynn Krebs**

Cara Krebs's work takes an earnest, celebratory approach to desire and wonder. Fantasy and sensually indulgent material mingle with the mundane in installations, paintings, and hybrids of media that examine locations between worlds, physical and imagined. In 2013 she completed her MFA at the School of the Art Institute of Chicago, receiving the John Quincy Adams Fellowship. As the Overall Outstanding Graduate Cara received her BFA from Weber State University in 2010. She has exhibited locally and nationally in locations including Chicago, Kansas City, Fort Lauderdale, and Denver and during 2017 will exhibit in Salt Lake City, Ogden, Bountiful, Beirut, and Istanbul. Recently Cara completed a residency at the Utah Museum of Contemporary Art culminating in her solo exhibition at the UMOCA, *Sehnsucht*. Cara is an adjunct instructor in the Department of Visual Art and Design at Weber State University where she was awarded a grant for 2016 to research contemporary art in Ecuador. Cara is the Programs Coordinator at the Bountiful Davis Art Center.

### **Tatiana Svrckova Larsen**

Tatiana Svrckova Larsen was born in Cadca, Slovakia. She has attended Josef Vydra's School of Applied Arts in Bratislava and University of Matej Bel in Banska Bystrica, Slovakia. In 2010 she received her BA in Studio Arts from Wichita State University and in 2012 she graduated with her MFA in Art and Technology from The Ohio State University. Tatiana Larsen recently completed

her one-year artist-in-residence at the Utah Museum of Contemporary Art in Salt Lake City, UT. She received a number of scholarships and awards, some of which are: Artists of Utah's 35×35 Juror Award, 2015 Utah Arts & Museums Statewide Annual Competition Juror's Award, Ulrich Museum Alliance Award & Alfred & Ester Penny Scholarship. Larsen has exhibited her work in venues such as Urban Arts Space in Columbus, OH, Utah Museum of Contemporary Art, Central Utah Art Center in Salt Lake City, UT as well as several alternative gallery spaces and performance venues in Los Angeles and Wichita areas. Her videos have screened at the Wexner Center for the Arts in Columbus, OH, Torrance Museum of Art in Torrance, CA and Sam Huston University in Huston, TX.

### **Kristina Lenzi**

Kristina Lenzi is a performance artist, a painter, a curator and an adjunct professor. Lenzi holds a BFA in drawing and painting from the University of Utah and an MFA in painting and performance art from Tufts University in affiliation with the School of the Museum of Fine Arts, Boston. She has exhibited widely within the United States and in Poland and France. She is the 2008 recipient of the Tanne Foundation Award in Performance Art. Lenzi's painting has recently become part of the permanent Salt Lake County collection. Lenzi is the founder and curator of the Annual Salt Lake City Performance Art Festival, bringing in artists from around the globe. Since graduate school, Lenzi has taught at the School of the Museum of Fine Arts, Boston, the University of Utah in the art department and in the college of architecture, Westminster College and Weber State University's Department of Visual Art and Design. Kristina Lenzi's work is most often sociopolitical and humorous in nature, both performative and painterly.

### **Dianna Lindquist**

Born in the United Kingdom, artist Dianna Lindquist moved to the United States as a child. She received a bachelor of fine arts degree in two-dimensional design from Weber State University and a master of fine arts from San Francisco Art Institute.

Her drawings and paintings reflect her contemplation on the human relationship with the landscape and its many species. Incorporating both flora and fauna, she is influenced by the environmental issues of today and also combining recombinant genetics in her creation of these mixed media degraded forms and landscapes. Currently, she is teaching art as an adjunct professor at Weber State University and lives in Northern Utah.

### **Jake McIntire**

Jake McIntire is a designer, entrepreneur, strategist, and creative problem solver working at the intersections of business, art, design, and urban theory. Jake is the founder of UNION Creative Agency. He is also currently working as a consultant and collaborator on Ogden City's Master Plan for Arts and Culture. He holds an MFA in Collaborative Design with an emphasis in Social Entrepreneurship and Urban Theory from the Pacific Northwest College of

Art where he had the opportunity to engage with community members, artists, scientists, activists, and policy makers to work toward positive solutions to complex challenges. Jake received his BFA with Honors in Intermedia Sculpture with a minor in Business from the University of Utah. Jake has facilitated workshops throughout Oregon and Utah on subjects such as: organizational development, change management, urban theory, and ecosystem policy. He has cofounded numerous art collectives, including Project Ground Floor and the University of Utah's first sculpture club where he gained experience in grant writing and curating. Jake has dedicated himself to exploring urban transformation and he believes that art is among our most powerful resources in creating better cities.

### **Ya'el Pedroza**

I currently live in Ogden, Utah, received my M.F.A. at California State University at Long Beach, and my B.F.A. at Sierra Nevada College in Incline Village, Nevada. My art has been shown nationally in group shows throughout California, New York, Florida, Washington, Nevada, Oregon, Illinois, and Wisconsin, and I have also participated in shows internationally in Italy, and Denmark at the Roennebaeksholm Arts and Culture Center.

My work is an observation of the combined human condition and our current environmental situation. It conveys human interplay with the natural world by showing man's footprint on our biological environment, and how it is altered by certain deliberate, as well as unintentional interactions, resulting in imagery of these possible outcomes and exchanges.

Although my work often time deals with man verses nature and the dilemmas that occur as a response, in my most recent works I have been transitioning into exploring my relationship with nature in a more spiritual, emotional, and subconscious way. It has always been the beauty, strength, and complexities of nature that have drawn me to it as a major theme in my work. I recently find myself conveying nature less as the victim of human interaction and more as a capable and prevailing entity.

### **Margaret A (Peggy) Reimschuessel**

Born and reared Utahan, graduating from Brigham Young University (BA) in English 1970 and Weber State University (80 Hour Program/BFA equivalent) in 1988. After graduating with honors, the Department of Art invited her to return and teach as adjunct faculty in 1989 where she has continued to teach "Art for the Non-art Major" for twenty years. Her career in the arts include creating, designing and executing all aspects of community theatre; managing a "satellite" ballet school for Utah's premiere regional ballet company, Ballet West (1998 – 2006 Eccles Community Art Center, Ogden, Utah); and designing/developing (along with her daughter) her own greeting card company, Folding Giraffe, LLC (2006 to present). Both individuals and local business display her paintings and sculptural pieces in their collections.

### **Gretchen Reynolds**

Started painting when she was seven years old. Her parents gave her a complete set of oils. She knew they were the real deal because they came with no instructions. Looking at the little bottle of linseed oil she remembers thinking, "I have no idea what to do with this." She painted a puppy and a kitty. She was hooked.

At nineteen, she began studying modern dance in Seattle, Washington, then theater, then

marionette theater. She traveled with her own Madigan Strung Puppets Marionette Theater and landed in Utah, where she planned on spending one year before going to Europe to study and hopefully teach puppet theater. Four years later, still in Salt Lake, she entered the University of Utah. The painting and drawing department brought her back to her first love, oils. She earned her Bachelor of Fine Art, and then went on to do her Masters of Fine Art. Her work, which explores the possibility of abstraction and realism in the same image, has been exhibited across the United States. She teaches painting and drawing at Weber State University. Her work is currently at Agora Gallery, New York and Phillip's Gallery, Salt Lake City.

### **Kent Ripplinger**

While growing up on a small Utah farm I was influenced by the open space and I became interested in my relationship to various places and the land. This has carried on into my writing and photography as I still enjoy exploring our broader human connections and disconnections with landscape and place. That former more agrarian time and atmosphere of my youth appears more durable in my mind with its methods of living which were presumably more enduring and bound to place than the methods of living in a place which are common for us in The West today. And so I find it very natural to explore what it means to live in the modern West and to investigate the concepts of how an increasingly material and technologically-based culture becomes less agrarian and more separated from the land substituting our historical land ethic and ideal with our plethora of modern material substitutes. I as well look into manifestations of acculturation, the conquest of minority groups on the canvas of the Western landscape, industrial conquests of landscape and Nature, and the limits and durability of technologically enamored culture with influences stemming from the works of writers like Henry David Thoreau, Wendell Berry, Sarah Deutsch, Edward Abbey and other writers.

Currently I am continuing my explorations of material culture in the Western landscape through writing as well as straight documentary photography.

### **Brian Stecklein**

Born in Sunset Utah and attended Weber State University where he received his Bachelor and Masters Degrees. During his undergraduate career he was named the best graduating Art/Photography student and published in Best of College Photography annual. He has become very interested in the learning process and studied Curriculum Design and Instruction as a graduate student. As an Associate Dean of Continuing Education he is heavily involved with creating distance learning programs and teaches a online introductory art course.

### **Steve Stones**

A native of Ogden, Utah. In 1996, he earned a Bachelor of Fine Arts in Visual Communications-Illustration from Weber State University in Ogden, Utah. He went on to earn a Master's of Fine Arts degree in painting from Utah State University in Logan, Utah in 2000. He has been teaching as an adjunct instructor of art in the department of Visual Arts at Weber State University for nine years. His mixed media paintings have appeared in various exhibitions throughout the United States.

### **Jeremy Stott**

Born and raised in Utah. He currently resides in Ogden to serve the students of his beloved alma mater: Weber State University. After graduating in Visual Communications/Graphic Arts, he began his career as a graphic designer and became an art director before returning to Weber State University. Jeremy is currently an art instructor and the manager of the art department's digital media. Courses taught are Color theory, Introduction to Art for Non-art Majors, Interactive media, Design for the Internet, Digital Page Composition, Vector and Raster Graphics, and Design Production.

### **Rene Venegas**

Rene Venegas is a 16th generation silversmith master. As proprietor of Galleon's Gold Jewelry with his wife Jenny, they specialize in custom and hand-crafted fine jewelry. They also offer jewelry making and silver-smithing classes, repair work, polishing, and appraisal services. All work is done by appointment.

### **Adam Watkins**

*Adam Daniel Watkins* was born on Nov 2, 1981 in Layton Utah. As part of a legacy of photographers Adam has committed his knowledge of commercial photography to a study in Fine Art. After graduating Art Cum-Laude with a BFA from the University of Utah Adam was invited to return immediately as a graduate instructor in the fine arts program from which he's received his Master's Degree. Concurrent with his passion for art making Adam teaches Photography at the U of U and surrounding college campuses. He is a member of the Salt City Photo Society, and is active in numerous National and International Honour Societies.

In addition to his work in commerce, Adam's art has been seen in several national Fine Art publications such as: VQR Magazine (2016) The Art of Travel Photography (2014) *Figures/Context* (2014), *Diffusion: Unconventional Photography Magazine*, *Exposure: Year in Review*. His images have received numerous jury awards and have been displayed in National and Local galleries including: PhotoPlace Gallery, The Finch Lane Gallery, The Woodbury Gallery, The Alvin Gittens Gallery, Williams Fine Art Gallery, The Rio Grande Gallery, and The Salt Lake City Photo-Collective, Adam currently lives and continues his work at his home in Salt Lake City, Utah.

3. A list of current faculty teaching assignments, including, if applicable, the number of classroom/lecture, studio, laboratory, and/or seminars per week per semester.

Jpeg scans of the Spring 2017 class list start on the next page.



**Weber State University**  
**Class Schedule Edit List**  
 201730 - Spring 2017

**College of Arts and Humanities**  
**Visual Arts - 3004**

SUBJ	NUMB	CRN	COURSE TITLE	Time, Day, Location	ENRL	MAX	HRS	CAMPUS	POT	WL ACTL	WL MAX	FULL NAME
ART	1010	33176	CA Introduction to Visual Arts	03:00 PM- 04:22 PM MW KA143	34	40	3	WSU	1	0	10	Banerji, Naseem
Course Fee \$10.00												
ART	1010	33178	CA Introduction to Visual Arts	01:00 PM- 02:22 PM TR KA120	40	40	3	WSU	1	0	10	Pedroza, Ya'el
Course Fee \$10.00												
ART	1010	33843	CA Introduction to Visual Arts	05:30 PM- 08:30 PM W KA143	40	40	3	WSU	2	0	10	Stones, Steve
This is an 8-week Hybrid class that meets part of the semester face-to-face and the rest of the class is done online. Class runs from Jan. 9 to Mar. 3, 2017. Course Fee \$10.00												
ART	1010	33844	CA Introduction to Visual Arts	05:30 PM- 08:30 PM W KA143	19	40	3	WSU	3	0	10	Stones, Steve
this is an 8-week Hybrid class that meets part of the semester face-to-face and the rest of the class is done online. Class runs from Mar. 13 to Apr. 27, 2017. Course Fee \$10.00												
ART	1010	34317	CA Introduction to Visual Arts	05:30 PM- 08:10 PM R D02321	30	34	3	WSD	1	0	10	Dolberg, Daniel
Course Fee \$10.00												
ART	1010	34319	CA Introduction to Visual Arts	10:30 AM- 11:45 AM TR D03203	28	35	3	WSD	1	0	10	Reynolds, Gretchen
Course Fee \$10.00												
ART	1010	34323	CA Introduction to Visual Arts	- OL	42	40	3	ONL	1	0	10	Stecklein, Brian
To access online course materials, please log in to your student portal at weber.edu and select WSU Online- Canvas. Course Fee \$10.00												
ART	1010	34325	CA Introduction to Visual Arts	- OL	42	40	3	ONL	1	0	10	Reynolds, Gretchen
To access online course materials, please log in to your student portal at weber.edu and select WSU Online- Canvas. Course Fee \$10.00												
ART	1010	34326	CA Introduction to Visual Arts	- OL	36	40	3	ONL	1	0	10	Crum, Andrew
To access online course materials, please log in to your student portal at weber.edu and select WSU Online- Canvas. Course Fee \$10.00												
ART	1010	34327	CA Introduction to Visual Arts	- OL	39	40	3	ONL	1	0	10	Titus, Sarah
To access online course materials, please log in to your student portal at weber.edu and select WSU Online- Canvas. Course Fee \$10.00												
ART	1010	34328	CA Introduction to Visual Arts	- OL	38	40	3	ONL	1	0	10	Gilson, Franklin
To access online course materials, please log in to your student portal at weber.edu and select WSU Online- Canvas. Course Fee \$10.00												
ART	1010	34329	CA Introduction to Visual Arts	- OL	39	40	3	ONL	1	0	10	Lenzi, Kristina
To access online course materials, please log in to your student portal at weber.edu and select WSU Online- Canvas. Course Fee \$10.00												
ART	1010	34330	CA Introduction to Visual Arts	- OL	34	40	3	ONL	1	0	10	Adams, Amy
To access online course materials, please log in to your student portal at weber.edu and select WSU Online- Canvas. Course Fee \$10.00												

1/20/2017 10:45:59 AM

**Weber State University**  
**Class Schedule Edit List**  
 201730 - Spring 2017

Page 2 of 8

**College of Arts and Humanities**  
**Visual Arts - 3004**

SUBJ	NUMB	CRN	COURSE TITLE	Time, Day, Location	ENRL	MAX	HRS	CAMPUS	POT	WL ACTL	WL MAX	FULL NAME
ART	1010	34331	CA Introduction to Visual Arts		39	40	3	ONL	1	0	10	Titus, Sarah

-

OL

To access online course materials, please log in to yourstudent portal at weber.edu and select WSU Online- Canvas. Course Fee \$10.00

ART	1010	34332	CA Introduction to Visual Arts		41	40	3	ONL	1	0	10	Reynolds, Gretchen
-----	------	-------	--------------------------------	--	----	----	---	-----	---	---	----	--------------------

-

OL

To access online course materials, please log in to yourstudent portal at weber.edu and select WSU Online- Canvas. Course Fee \$10.00

ART	1010	34333	CA Introduction to Visual Arts		31	30	3	ONL	1	0	10	Stott, Jeremy
-----	------	-------	--------------------------------	--	----	----	---	-----	---	---	----	---------------

-

OL

To access online course materials, please log in to yourstudent portal at weber.edu and select WSU Online- Canvas. Course Fee \$10.00

ART	1010	34334	CA Introduction to Visual Arts		38	40	3	ONL	1	0	10	Gilson, Franklin
-----	------	-------	--------------------------------	--	----	----	---	-----	---	---	----	------------------

-

OL

To access online course materials, please log in to yourstudent portal at weber.edu and select WSU Online- Canvas. Course Fee \$10.00

ART	1010	34335	CA Introduction to Visual Arts		40	40	3	ONL	1	0	10	Dolberg, Daniel
-----	------	-------	--------------------------------	--	----	----	---	-----	---	---	----	-----------------

-

OL

To access online course materials, please log in to yourstudent portal at weber.edu and select WSU Online- Canvas. Course Fee \$10.00

ART	1010	34338	CA Introduction to Visual Arts		2	50	3	IND		0	0	Stecklein, Brian
-----	------	-------	--------------------------------	--	---	----	---	-----	--	---	---	------------------

-

IN

THIS IS A SELF-PACED ONLINE COURSE. You have six months to complete this class, and payment is due in full at time of registration. To register, please call 801-626-6600. More information at <http://weber.edu/ce/distancelearning>

ART	1030	33179	CA Studio Art for NonArt Major	02:30 PM- 04:30 PM TR KA306	18	17	3	WSU	1	0	5	Reimschuessel, Margaret
-----	------	-------	--------------------------------	-----------------------------	----	----	---	-----	---	---	---	-------------------------

Course Fee \$15.00

ART	1030	33181	CA Studio Art for NonArt Major	08:30 AM- 10:30 AM TR KA306	19	17	3	WSU	1	0	5	Reimschuessel, Margaret
-----	------	-------	--------------------------------	-----------------------------	----	----	---	-----	---	---	---	-------------------------

Course Fee \$15.00

ART	1030	33182	CA Studio Art for NonArt Major	01:00 PM- 05:00 PM F KA306	15	17	3	WSU	1	0	10	Emerich, William
-----	------	-------	--------------------------------	----------------------------	----	----	---	-----	---	---	----	------------------

Course Fee \$15.00

ART	1030	33183	CA Studio Art for NonArt Major	01:00 PM- 05:00 PM S KA307	15	17	3	WSU	1	0	10	Emerich, William
-----	------	-------	--------------------------------	----------------------------	----	----	---	-----	---	---	----	------------------

Course Fee \$15.00

ART	1030	33184	CA Studio Art for NonArt Major	11:00 AM- 01:00 PM MW KA306	17	17	3	WSU	1	0	10	Pedroza, Y'a'el
-----	------	-------	--------------------------------	-----------------------------	----	----	---	-----	---	---	----	-----------------

Course Fee \$15.00

ART	1030	34302	CA Studio Art for NonArt Major	12:00 PM- 02:00 PM MW WW108	16	20	3	WSW	1	0	10	Kennedy, Ann
-----	------	-------	--------------------------------	-----------------------------	----	----	---	-----	---	---	----	--------------

Course Fee \$15.00

ART	1030	34315	CA Studio Art for NonArt Major	02:30 PM- 04:30 PM TR WW108	16	20	3	WSW	1	0	10	Kennedy, Ann
-----	------	-------	--------------------------------	-----------------------------	----	----	---	-----	---	---	----	--------------

1/20/2017 10:45:59 AM

**Weber State University**  
**Class Schedule Edit List**  
 201730 - Spring 2017

Page 3 of 8

**College of Arts and Humanities****Visual Arts - 3004**

SUBJ	NUMB	CRN	COURSE TITLE	Time	Day	Location	ENRL	MAX	HRS	CAMPUS	POT	WL ACTL	WL MAX	FULL NAME
ART	1030	34315	CA Studio Art for NonArt Major				16	20	3	WSW	1	0	10	Kennedy, Ann
Course Fee \$15.00														
ART	1030	34322	CA Studio Art for NonArt Major	01:00 PM- 03:00 PM	MW	D02318	19	20	3	WSD	1	0	10	Lenzi, Kristina
Course Fee \$15.00														
ART	1030	34336	CA Studio Art for NonArt Major				35	35	3	ONL	1	0	10	Stones, Steve
- OL														
To access online course materials, please log in to your student portal at weber.edu and select WSU Online- Canvas. Course Fee \$15.00														
ART	1030	34337	CA Studio Art for NonArt Major				34	35	3	ONL	1	0	10	Dolberg, Daniel
- OL														
To access online course materials, please log in to your student portal at weber.edu and select WSU Online- Canvas. Course Fee \$15.00														
ART	1040	33185	Orientation to Visual Studies	11:00 AM- 01:45 PM	MW	KA120	25	40	3	WSU	1	0	10	Morin, Molly
Course Fee \$23.00														
ART	1040	33186	Orientation to Visual Studies	02:30 PM- 05:15 PM	TR	KA106	17	20	3	WSU	1	0	10	Jackson, Levi
Course Fee \$23.00														
ART	1110	33187	Drawing I	09:00 AM- 02:30 PM	F	KA305	13	17	3	WSU	1	0	10	Lindquist, Dianna
Course Fee \$43.00														
ART	1110	33188	Drawing I	05:00 PM- 07:45 PM	MW	KA305	12	17	3	WSU	1	0	10	Krebs, Cara-Lynne
Course Fee \$43.00														
ART	1110	33189	Drawing I	05:30 PM- 08:15 PM	TR	KA305	13	17	3	WSU	1	0	10	Gilson, Franklin
Course Fee \$43.00														
ART	1110	33190	Drawing I	02:30 PM- 05:15 PM	TR	KA305	16	17	3	WSU	1	0	10	Horsley, Scott
Course Fee \$43.00														
ART	1120	33191	Design: 2D	11:00 AM- 01:45 PM	MW	KA307	13	17	3	WSU	1	0	10	Krebs, Cara-Lynne
Course Fee \$43.00														
ART	1120	33195	Design: 2D	08:30 AM- 11:15 AM	TR	KA307	14	17	3	WSU	1	0	10	Bradshaw, Kathryn
Course Fee \$43.00														
ART	1120	33198	Design: 2D	05:30 PM- 08:15 PM	TR	KA306	11	17	3	WSU	1	0	10	Emerich, William
Course Fee \$43.00														

1/20/2017 10:45:59 AM

**Weber State University**  
**Class Schedule Edit List**  
 201730 - Spring 2017

Page 4 of 8

**College of Arts and Humanities**  
**Visual Arts - 3004**

SUBJ	NUMB	CRN	COURSE TITLE	Time	Day	Location	ENRL	MAX	HRS	CAMPUS	POT	WL ACTL	WL MAX	FULL NAME
ART	1130	33200	Design: 3D	11:00 AM - 01:45 PM	MW	KA165	8	17	3	WSU	1	0	10	Adams, Amy
Course Fee \$123.00														
ART	1130	33203	Design: 3D	11:30 AM - 02:15 PM	TR	KA165	15	17	3	WSU	1	0	10	McIntire, Jake
Course Fee \$123.00														
ART	1130	33206	Design: 3D	05:30 PM - 08:15 PM	TR	KA165	9	17	3	WSU	1	0	10	Larsen, Tatiana
Course Fee \$123.00														
ART	1140	33215	Color Theory	11:00 AM - 04:30 PM	F	KA307	12	20	3	WSU	1	0	10	Pedroza, Ya'el
Course Fee \$43.00														
ART	1140	33216	Color Theory	05:00 PM - 07:45 PM	MW	KA306	17	20	3	WSU	1	0	10	Lenzi, Kristina
Course Fee \$43.00														
ART	1140	33218	Color Theory	11:30 AM - 02:15 PM	TR	KA307	19	20	3	WSU	1	0	10	Stott, Jeremy
Course Fee \$43.00														
ART	2200	33255	Intro to Printmaking	08:30 AM - 11:15 AM	TR	KA251	16	15	3	WSU	1	0	10	Stevenson, Kathleen
Course Fee \$150.00														
ART	2250	33222	Photography-Black White/Analog	02:00 PM - 04:45 PM	MW	KA223	13	17	3	WSU	1	0	10	Harper, Jamie
Course Fee \$118.00														
ART	2250	33224	Photography-Black White/Analog	05:00 PM - 07:45 PM	MW	KA223	7	17	3	WSU	1	0	10	Harper, Jamie
Course Fee \$118.00														
ART	2310	33407	Intro to Ceramic Art	11:00 AM - 01:45 PM	MW	KA130	15	17	3	WSU	1	0	0	Wolochowicz, Stephen
Course Fee \$153.00														
ART	2350	33278	Small Metals/Jewelry I	05:00 PM - 07:45 PM	MW	KA168	13	17	3	WSU	1	0	0	Venegas, Rene
Course Fee \$123.00														
ART	2420B	33324	Vector Drawing	11:00 AM - 01:45 PM	MW	KA210D	21	20	1	WSU	2	0	10	Stott, Jeremy
Course Fee \$23.00														
ART	2420C	33325	Digital Page Composition				20	20	1	WSU	3	0	10	Stott, Jeremy

1/20/2017 10:45:59 AM

**Weber State University**  
**Class Schedule Edit List**  
**201730 - Spring 2017**

Page 5 of 8

**College of Arts and Humanities****Visual Arts - 3004**

SUBJ	NUMB	CRN	COURSE TITLE	Time	Day	Location	ENRL	MAX	HRS	CAMPUS	POT	WL ACTL	WL MAX	FULL NAME
ART	2420C	33325	Digital Page Composition	11:00 AM - 01:45 PM	MW	KA210D	20	20	1	WSU	3	0	10	Stott, Jeremy
Course Fee \$23.00														
ART	2420D	33327	Design for the Internet	11:00 AM - 01:45 PM	MW	KA210D	21	20	1	WSU	3	0	10	Stott, Jeremy
Course Fee \$23.00														
ART	2430	33307	Introduction to Graphic Design	02:00 PM - 04:45 PM	MW	KA220	22	21	3	WSU	1	0	10	Biddle, Mark
Course Fee \$93.00														
ART	2450	33225	Photography: Color/Digital	09:00 AM - 02:30 PM	S	KA210A	13	17	3	WSU	1	0	10	Ripplinger, Kent
Course Fee \$148.00														
ART	2450	33226	Photography: Color/Digital	05:30 PM - 08:15 PM	TR	KA210A	12	17	3	WSU	1	0	10	Ripplinger, Kent
Course Fee \$148.00														
ART	2450	33250	Photography: Color/Digital	05:00 PM - 07:45 PM	MW	KA210A	16	17	3	WSU	1	0	10	Watkins, Adam
Course Fee \$148.00														
ART	2600	33258	Painting I	05:00 PM - 07:45 PM	MW	KA309	16	17	3	WSU	1	0	10	Horsley, Scott
Course Fee \$78.00														
ART	2810	33409	Furniture Design	08:30 AM - 11:15 AM	TR	KA165	10	17	3	WSU	1	0	10	Manley, Jason
Course Fee \$118.00														
ART	3085	33227	Critical Issues in Art	02:00 PM - 04:45 PM	MW	KA150	20	20	3	WSU	1	0	10	Crow, Paul
Course Fee \$23.00														
ART	3150	33228	Photography Seminar	08:30 AM - 11:15 AM	TR	KA223	5	17	3	WSU	1	0	10	Crow, Paul
Course Fee \$148.00														
ART	3200	33276	Intermediate Printmaking	02:30 PM - 05:15 PM	TR	KA251	4	17	3	WSU	1	0	0	Stevenson, Kathleen
Course Fee \$150.00														
ART	3215	33264	Etching Printmaking	05:30 PM - 08:15 PM	TR	KA251	10	15	3	WSU	1	0	10	Lindquist, Dianna
ART	3310	33412	Ceramics II				9	17	3	WSU	1	0	0	Wolochowicz, Stephen

1/20/2017 10:45:59 AM

**Weber State University**  
**Class Schedule Edit List**  
 201730 - Spring 2017

Page 6 of 8

**College of Arts and Humanities**  
**Visual Arts - 3004**

SUBJ	NUMB	CRN	COURSE TITLE	Time	Day	Location	ENRL	MAX	HRS	CAMPUS	POT	WL ACTL	WL MAX	FULL NAME
ART	3310	33412	Ceramics II	08:30 AM - 11:15 AM	TR	KA130	9	17	3	WSU	1	0	0	Wolochowicz, Stephen
Course Fee \$154.00														
ART	3320	33413	Ceramics III: Intermediate	08:30 AM - 11:15 AM	TR	KA130	1	17	3	WSU	1	0	0	Wolochowicz, Stephen
Course Fee \$153.00														
ART	3350	33280	Small Metals/Jewelry II	05:00 PM - 07:45 PM	MW	KA168	0	17	3	WSU	1	0	0	Venegas, Rene
Course Fee \$123.00														
ART	3430	33308	Typography/Publication Design	02:30 PM - 05:15 PM	TR	KA307	13	20	3	WSU	1	0	10	Bauer, Micah
Course Fee \$83.00														
ART	3445	33309	Web Design for Visual Arts	02:00 PM - 04:45 PM	MW	KA210B	13	20	3	WSU	1	0	10	Bauer, Micah
ART	3455	33311	Design Theory and Practice	08:30 AM - 11:15 AM	TR	KA220	6	20	3	WSU	1	0	10	Clarkson, Larry
Course Fee \$83.00														
ART	3465	33312	Motion Design	11:00 AM - 01:45 PM	MW	KA210B	9	20	3	WSU	1	0	10	Bauer, Micah
ART	3520	33266	Art Methods II	05:30 PM - 08:15 PM	TR	KA307	4	17	3	WSU	1	0	10	Huxhold, Dianna
Course Fee \$118.00														
ART	3530	33267	Art Methods for Art K-6	05:00 PM - 07:45 PM	MW	KA307	0	17	3	WSU	1	0	10	Huxhold, Dianna
ART	3550	33230	Photography: View Camera Tech	11:00 AM - 01:45 PM	MW	KA223	7	17	3	WSU	1	0	10	Crow, Paul
Course Fee \$161.00														
ART	3600	33268	Painting II	08:30 AM - 11:15 AM	TR	KA308	14	17	3	WSU	1	0	0	Horsley, Scott
Course Fee \$78.00														
ART	3700	33405	Sculpture II	02:30 PM - 05:15 PM	TR	KA165	4	17	3	WSU	1	0	10	Manley, Jason
Course Fee \$123.00														
ART	3995	33410	BFA Seminar	02:30 PM - 05:15 PM	TR	KA150	11	20	3	WSU	1	0	0	Page, Angelika

1/20/2017 10:45:59 AM

**Weber State University**  
**Class Schedule Edit List**  
 201730 - Spring 2017

Page 7 of 8

**College of Arts and Humanities**

**Visual Arts - 3004**

SUBJ	NUMB	CRN	COURSE TITLE	Time	Day	Location	ENRL	MAX	HRS	CAMPUS	POT	WL ACTL	WL MAX	FULL NAME
ART	3995	33410	BFA Seminar				11	20	3	WSU	1	0	0	Pagel, Angelika
Course Fee \$23.00														
ART	4110	33846	Advanced Drawing	11:00 AM - 01:45 PM	MW	KA305	9	17	3	WSU	1	0	10	Choberka, Matthew
Course Fee \$43.00														
ART	4200	33277	Advanced Printmaking	02:30 PM - 05:15 PM	TR	KA251	4	17	3	WSU	1	0	0	Stevenson, Kathleen
Course Fee \$150.00														
ART	4310	33415	Ceramics IV: Advanced	08:30 AM - 11:15 AM	TR	KA130	6	17	3	WSU	1	0	0	Wolochowicz, Stephen
Course Fee \$153.00														
ART	4320	33416	Ceramics V: Artist's Identity	08:30 AM - 11:15 AM	TR	KA130	3	17	3	WSU	1	0	0	Wolochowicz, Stephen
Course Fee \$153.00														
ART	4350	33282	Small Metals/Jewelry III	05:00 PM - 07:45 PM	MW	KA168	0	17	3	WSU	1	0	0	Venegas, Rene
Course Fee \$123.00														
ART	4400	33313	Advanced Graphic Design	02:30 PM - 05:15 PM	TR	KA220	7	20	3	WSU	1	0	10	Clarkson, Larry
Course Fee \$93.00														
ART	4410	33316	Design Seminar	05:30 PM - 08:15 PM	TR	KA220	12	20	3	WSU	1	0	10	Clarkson, Larry
Course Fee \$93.00														
ART	4550	33232	Photography: Studio Lighting	11:30 AM - 02:15 PM	TR	KA224	10	17	3	WSU	1	0	10	Jackson, Levi
Course Fee \$148.00														
ART	4600	33269	Painting III	08:30 AM - 11:15 AM	TR	KA308	5	17	3	WSU	1	0	0	Horsley, Scott
Course Fee \$78.00														
ART	4700	33406	Sculpture III	02:30 PM - 05:15 PM	TR	KA165	2	17	3	WSU	1	0	10	Manley, Jason
Course Fee \$123.00														
ART	4890	34781	Coop Work Experience			KA106	1	1	1	WSU	1	0	0	Gravis, Lydia
ART	4900	34771	Individual Studies				1	0	3	WSU	1	0	0	Stevenson, Kathleen

1/20/2017 10:45:59 AM

**Weber State University**  
**Class Schedule Edit List**  
 201730 - Spring 2017

Page 8 of 8

**College of Arts and Humanities**  
**Visual Arts - 3004**

SUBJ	NUMB	CRN	COURSE TITLE	Time	Day	Location	ENRL	MAX	HRS	CAMPUS	POT	WL ACTL	WL MAX	FULL NAME
ART	4900	34771	Individual Studies	-		KA251	1	0	3	WSU	1	0	0	Stevenson, Kathleen
Course Fee \$18.00														
ART	4900	35064	Individual Studies	-		KA309	1	0	3	WSU	1	0	0	Horsley, Scott
Course Fee \$18.00														
ART	4900	35120	Individual Studies	-		KA309	1	0	2	WSU	1	0	0	Choberka, Matthew
Course Fee \$18.00														
ART	4900	35123	Individual Studies	-		KA309	1	0	3	WSU	1	0	0	Choberka, Matthew
Course Fee \$18.00														
ART	4900	35140	Individual Studies	-		KA220	1	0	3	WSU	1	0	0	Clarkson, Larry
ART	4930	34770	Teaching Assistantship Experie	05:00 PM - 07:45 PM	MW	KA223	1	0	2	WSU	1	0	0	Harper, Jamie
ART	4930	35011	Teaching Assistantship Experie	-		KA220	1	0	2	WSU	1	0	0	Biddle, Mark
ART	4990	33411	BFA Thesis	02:30 PM - 05:15 PM	TR	KA223	7	17	3	WSU	1	0	10	Morin, Molly
Course Fee \$23.00														
ARTH	1100	33270	CA Art/Arch: AD 1000-Present	01:00 PM - 02:45 PM	MW	KA143	60	60	4	WSU	1	0	0	Pagel, Angelika
Course Fee \$30.00														
ARTH	2040	33274	Art and Architecture of Asia	09:00 AM - 10:45 AM	MW	KA143	15	25	4	WSU	1	0	10	Banerji, Naseem
Course Fee \$29.00														
ARTH	3030	33300	Native American Art Southw est	11:00 AM - 12:45 PM	TR	KA143	20	17	4	WSU	1	0	0	Pagel, Angelika
Course Fee \$30.00														
ARTH	3070	33302	Art & Architecture of China	01:30 PM - 03:15 PM	TR	KA143	11	20	4	WSU	1	0	0	Banerji, Naseem
Course Fee \$30.00														
ARTH	3451	33305	History of Design	09:00 AM - 10:45 AM	MW	KA220	26	25	4	WSU	1	0	0	Biddle, Mark
Course Fee \$30.00														

#### 4. Duties performed by graduate assistants.

*Note: Factual information concerning full-time and part-time faculty is provided in the HEADS Data Survey(s) listed earlier in the portfolio (Section IV, MDP-I.B., page A-22). Do not duplicate this information here, but rather reference it as necessary.*

Not Applicable.



**F. Facilities, Equipment, Health, and Safety**

1. A list of facilities for art/design and related activities.

Kimball Visual Arts Center

Weber State Davis Campus (for Interior Design Program, College of EAST)

2. An inventory of equipment for art/design as required by the institution.

Jpeg Scans of Departmental Inventory begins on the next page.

## Weber State University Fixed Asset Inventory

## Org 22100 - Visual Arts

## All Assets

PTAG	ASSET DESCRIPTION	MAKE	MODEL	SERIAL NUMBER	MANUFACTURER	PO#	AMOUNT	ACQD DATE	Location
002030069	PRESS PRINTING		SF32		CHARLES		0.00	10/1/1966	KA0251
004060842	DENSITOMETER		320TR	R937	X-RITE		0.00	10/1/1985	ET0000
004060866	PROCESSOR		CAP-40U	6454	ILFORD		0.00	8/1/1988	ET125H
004060939	FILM RECORDER		CH-5000	M2021F	POLAROID		0.00	1/1/1993	KA0000
007011291	WASH SYSTEM		300-1	WAD	CINCINNATI		0.00	1/1/1989	KA0000
010002810	ILLUMA SYS M2	WASATCH	BN0301 T	320417	WASATCH		0.00	6/18/1993	ET0148
010057652	CLAY MIXER	SUNSTONE POTTERY	BLUEBIRD	1097 M VFB 372	PUGMILL		0.00	12/23/1997	KA0130
010058755	LCD PROJECTOR	T V SPECIALISTS INC	PT-L595U	SL8440222	PANASONIC		0.00	8/21/1998	SS0306
010060009	PUG MILL	MRS. JOAN G. HUBBARD	UNK	379PMY779SS	BLUEBIRD		0.00	7/9/1999	KA0132
010060011	ELECTRIC KILN	MRS. JOAN G. HUBBARD	UNK	5067	SKUTT		0.00	7/9/1999	KA0136
010062376	CAMERA	DORIS ANN LAGEL	4SE	NONE	OMEGAVIEW		0.00	12/28/2000	KA0223
010063665	SCANNER	PICTURELINE	FLEXTIGHT	PH00198025	IMACON		0.00	9/5/2001	KA0243
010063915	LCD PROJECTOR	T V SPECIALISTS INC	DLA615	15610942	JVC		0.00	2/15/2002	KA0306
010063917	LCD PROJECTOR	T V SPECIALISTS INC	DLA615	13610827	JVC		0.00	2/15/2002	KA0307
010063919	LCD PROJECTOR	T V SPECIALISTS INC	DLA615	15610998	JVC		0.00	2/15/2002	KA0223
010063920	LCD PROJECTOR	T V SPECIALISTS INC	DLA615	14610925	JVC		0.00	2/15/2002	KA0210
010063922	LCD PROJECTOR	T V SPECIALISTS INC	DLA615	14610882	JVC		0.00	2/15/2002	KA0220
010063924	LCD PROJECTOR	T V SPECIALISTS INC	DLA615	15610939	JVC		0.00	2/15/2002	KA0305
010064068	COMPUTER (LAPTOP)	CDW GOVERNMENT INC	VAIO P3 1200	R2360508	SONY		0.00	4/3/2002	KA0000
010064072	PRINTER	CDW GOVERNMENT INC	8150DN	JPBLL40051	HEW/PAC		0.00	4/2/2002	KA0210
010064073	PRINTER	CDW GOVERNMENT INC	8150DN	JPBLL40442	HEW/PAC		0.00	4/2/2002	KA0103
010064074	PRINTER	CDW GOVERNMENT INC	8150DN	JPBLL40350	HEW/PAC		0.00	4/2/2002	KA0101
010064075	PRINTER	CDW GOVERNMENT INC	8150DN	JPBLL40253	HEW/PAC		0.00	4/2/2002	KA0210
010064076	PRINTER	CDW GOVERNMENT INC	STYLUS PRO	DNQ0001617	EPSON		0.00	4/2/2002	KA0213
010064098	SCANNER	CDW GOVERNMENT INC	EXPRESSION	UNK	EPSON		0.00	4/2/2002	KA0328
010064112	FORMULATING TABLE	BAILEY CERAMIC	"8"X2"X32	NONE	BAILEY		0.00	4/25/2002	KA0130
010064113	FORMULATING TABLE	BAILEY CERAMIC	"8"X2"X32	NONE	BAILEY		0.00	4/25/2002	KA0130
010064114	FORMULATING TABLE	BAILEY CERAMIC	"8"X2"X32	NONE	BAILEY		0.00	4/25/2002	KA0130

## Weber State University Fixed Asset Inventory

## Org 22100 - Visual Arts

## All Assets

PTAG	ASSET DESCRIPTION	MAKE	MODEL	SERIAL NUMBER	MANUFACTURER	PO#	AMOUNT	ACQD DATE	Location
010064115	FORMULATING TABLE	BAILEY CERAMIC	"8'X2'X32	NONE	BAILEY		0.00	4/25/2002	KA0130
010064133	ICE CUBE MAKER	RESTAURANT & STORE	IAC530	UNK	CORNELIUS BAR-MASTER		0.00	5/3/2002	KA0125
010064190	ETCHING PRESS	ATELIERS INC	"31" X 46"	2048	WHELAN		0.00	4/30/2002	KA0251
010064191	KILN	MILE HI CERAMICS	X2827	100202L	LAND I DAVINCI		0.00	4/11/2002	KA0136
010064192	KILN	MILE HI CERAMICS	T2327	100202M	LAND I DAVINCI		0.00	4/11/2002	KA0136
010064216	EXPOSURE SYSTEM	EQUIPMENT ZONE INC	MSP2125T	UNK	NUARC		0.00	5/14/2002	KA0223
010064225	SLIP ROLL	THESSCO INC	2641-0010	UNK	TENNSMITH		0.00	5/24/2002	KA0000
010064226	UNIVERSAL BENDER	THESSCO INC	2641-1095	47363	HOSSFIED		0.00	5/24/2002	KA0000
010064309	PLASMA CUTTER	MOUNTAIN AIRGAS INC	Jan-65	093059A1928011	THERMAL DYNAMICS		0.00	4/19/2002	KA0165
010064333	RADIAL ARM SAW	SCHLOSSER TOOL &	33-890	01F35874	DELTA		0.00	5/10/2002	KA0166
010064334	TABLE SAW	SCHLOSSER TOOL &	"UNISAW 10	0L177409	DELTA		0.00	5/10/2002	KA0166
010064346	PRINTER	UINTA BUSINESS	STYLUS PRO	C7Y0002441	EPSON		0.00	7/8/2002	KA0213
010064508	UMBRELLA PACKAGE	CALUMET	2400	NONE	ELITE		0.00	5/9/2002	KA0223
010064515	CAMERA KITS	CALUMET	501CM	WSU112400	KASSELBLAD		0.00	5/9/2002	KA0241
010064516	CAMERA KITS	CALUMET	501CM	WSU112401	HASSELBLAD		0.00	5/9/2002	KA0241
010064517	CAMERA KITS	CALUMET	501CM	WSU112402	HASSELBLAD		0.00	5/9/2002	KA0241
010064553	CAMERA KIT	CALUMET	501CM	WSU112403	HASSELBLAD		0.00	5/9/2002	KA0241
010064558	SQUARING SHEAR	THESSCO INC	52 INCH HBU48	9801	TENNSMITHITNEY		0.00	7/18/2002	KA0000
010064744	GAS KILN	BAILEY CERAMIC	DLX 28/18	3615	BAILEY		0.00	7/30/2002	KA0130
010064867	UV LIGHT TABLE	EDWARDS ENGINEERED	30X40	NONE	EDWARDS		0.00	12/20/2002	KA0226
010065026	COMPUTER	GATEWAY	EB000 PENTIUM	29857415	GATEWAY		0.00	3/19/2003	KA0103
010065092	SLURRY MIXER	BUNTRUCK	RTSM 50	3007	BUNTRUCK		0.00	4/28/2003	KA0168
010065919	LCD Projector	T V Specialists Inc	DLA G15	14610898	JVC	P0001298	8953.00	9/26/2003	KA0309
010066606	Letterpress	John Black Linecasting	219 AB	17918	Vandercook	P0004051	3000.00	5/10/2004	KA0253
010067486	LCD Projector	Poll Sound	PLC XP46	G4310132	Sanyo	P0005529	6495.00	10/19/2004	KA143A
010067509	Camera	Pictureline	810GII	1160700504	Toyo View	P0006381	3325.00	11/8/2004	KA0104
010067540	Printer	En Pointe Technologies	Stylus Pro 4000	E290024398	Epson	P0006577	1827.87	11/19/2004	KA0241
010067553	Scissor Lift	United Rentals	1930	69036	Genie	P0006112	9181.00	10/1/2004	KA0117

## Weber State University Fixed Asset Inventory

## Org 22100 - Visual Arts

## All Assets

PTAG	ASSET DESCRIPTION	MAKE	MODEL	SERIAL NUMBER	MANUFACTURER	PO#	AMOUNT	ACQD DATE	Location
010068356	Computer Laptop	En Pointe Technologies	VAIO FS	C300G36W	Sony	P0010121	1600.18	8/29/2005	KA0241
010068494	Scanner	En Pointe Technologies	Expression	FVS0004100	Epson	P0010754	2488.12	10/10/2005	KA0241
010068506	Computer Laptop	Weber State University	Powerbook G4	W85251RVRG4	Apple	P0010804	1999.00	10/17/2005	KA0241
010068667	Projector	TV Specialists Inc	3500 ANSI XGA	SH663008	PANASONIC	P0011665	3745.50	1/5/2006	KA0214
010068668	Projector	TV Specialists Inc	3500 ANSI XGA	SH663003	PANASONIC	P0011665	3745.50	1/5/2006	KA0214
010068678	Computer	Weber State University	iMac G5	W8546ZQATAR	Apple	P0011757	1599.00	1/11/2006	KA0328
010069014	Printer	PDT Enterprises	2080 Laser		Lightjet	P0011666	6632.95	12/22/2005	KA0241
010069229	Printer	Pictureline	Stylus Pro 9800		Epson	P0013154	4651.15	5/19/2006	KA0241
010070351	Computer	Weber State University	Mac Pro	G86353NGUPZ	Apple	P0014809	4612.00	9/13/2006	BC0240
010070354	Computer Laptop	Weber State University	MacBook	W86351R8THY	Apple	P0014824	2599.00	9/13/2006	KA0328
010070955	Computer Laptop	Weber State Univ	MacBook Pro	W86490UMN0g	Apple	P0016108	1799.00	12/5/2006	KA0103
010071080	Computer	Weber State University	iMac	QP7051RHVUW	Apple	P0016579	1557.00	2/12/2007	KA0328
010071591	Computer Laptop	Weber State University	MacBook	W87210J4WOM	Apple	P0017930	2689.00	3/30/2007	KA0321
010072809	Computer Laptop	Weber state University	MacBook Pro	W8739A2TX91	Apple	P0020244	1799.01	11/2/2007	KA0327
010073829	Printer	Pictureline	Stylus Pro 4880	JZ7E09828	Epson	P0022830	1995.00	6/12/2008	KA0210
010073930	Computer	Weber State University	Imac	W8824187YJZ	Apple	P0022876	2079.00	6/17/2008	KA0214
010074463	Computer	Weber State University	Mac Pro		Apple	P0024070	1891.12	8/28/2008	KA0210
010074524	Computer Laptop	Weber State University	iMac	W88364RUYJX	Apple	P0024161	1799.00	9/17/2008	KA0329
010075474	Computer	Weber State University	Mac Pro		Apple	P0024070	1891.12	9/5/2008	KA0210
010075549	Clay Mixer Hopper	All Metals Fabrication Inc	Stainless Steel			P0026263	4051.10	3/4/2009	KA0130
010075679	Projector	TV Specialists Inc	XGP610X	32632	Sharp	P0026596	8404.00	4/6/2009	KA0143
010075680	Projector	TV Specialists Inc	XGP610X	32633	Sharp	P0026596	8404.00	4/6/2009	KA0143
010075681	Projector	TV Specialists Inc	XGP610XN	32634	Sharp	P0026596	7878.00	4/6/2009	KA0120
010075682	Projector	TV Specialists Inc	XGP610XN	32635	Sharp	P0026596	7878.00	4/6/2009	KA0120
010075683	Lens	TV Specialists Inc	ANP30EZ	4311177	Sharp	P0026596	1978.00	4/6/2009	KA0150
010075684	Lens	TV Specialist Inc	ANP30EZ		Sharp	P0026596	1978.00	4/6/2009	KA0106
010076254	Projector	TV Specialists	PTF300U	SC9460083	Panasonic	P0028728	1394.86	9/10/2009	KA0214
010076260	Printer	Pictureline	Epson 4880	JZ7E020604	Epson	P0028935	994.99	9/21/2009	KA0210