



EMPLOYEE AWARDS

Four Weber State employees, nominated by their peers and chosen by committee, were presented with the Presidential Outstanding Professional and Classified Staff award by President Charles A. Wight Feb. 13.

The four outstanding employees each received \$2,000 cash, a plaque and a reserved parking space for one year.

Classified Staff

Dependable, knowledgeable, caring, productive and motivating are all words used to describe longtime custodial supervisor **Betty Gilchrist**. She is well known in the Val A. Browning Center and Kimball Visual Arts Center for the quality of her work in maintaining the buildings' cleanliness and presentation. Gilchrist was chair of the Classified Staff Advisory Committee in 2012 and served on the selection committee for WSU's 12th president. An avid volunteer, she was instrumental in establishing WSU's new service leave policy (PPM 3-66), which allows benefit-eligible employees up to eight hours of leave each year to perform voluntary community service.

Administrative assistant **Lynda Goucher** is the face and voice for the Master of Education (MEd) program, as she is most often the first person to interact with potential students. Known for her kind smile, warm greeting and genuine caring attitude, she is a consummate supporter of teacher education and always "sings the praises" of the program, its professors and students. Goucher is also the executive assistant for WSU's annual Storytelling Festival. She works tirelessly with community members, vendors, and national and local storytellers to help promote the art of storytelling in northern Utah.

Professional Staff

The nature of the work performed in WSU's Counseling and Psychological Services Center is highly specialized, very complex and deeply impactful. **Dianna Abel**, director of the center, is recognized as an expert in her field and is known for being professional and efficient, yet warm and sensitive. In addition to her leadership and counseling roles, she has initiated outreach events on campus such as Depression Screening Days, and has collaborated with community partners on WSU's "Question, Persuade, Refer" suicide prevention program. Amongst her staff, Abel is known for her encouraging words and respect for others.

Every person who visits Weber State, or drives along Harrison Boulevard, is witness to **Brian Hadley's** handiwork. As landscape manager, he strives to make the grounds healthier and even more beautiful, enhancing the university's prestige and respect in the community. Passionate about his profession, Hadley instills that in his staff members, initiating extensive training and certification opportunities for the landscape crew. Known also for his creativity, he developed a program that assigns a value to each tree on campus for insurance purposes. Around the landscape shop, Brian is never shy with a smile, lighthearted joke or an offer to help.



Did you Know?

Weber State University has a SkyBonus program through Delta Air Lines that not only allows WSU to earn points for its employees' university-related flights but also gives employees the opportunity to earn individual SkyMiles.

Here's how it works:

When using your WSU P-card to purchase airline tickets through Delta or a travel agent, input both Weber State's SkyBonus number and your own SkyMiles number, and you will earn points for the university and yourself.

WSU's SkyBonus number is US853360862.



GroupWise to Google Countdown

For many on campus, the move from Novell GroupWise might seem like abandoning an old friend, but for others, the change cannot come fast enough. After 18 years, Weber State will switch to Google Apps for Education March 1 at 5 p.m.

The date coincides with spring break, which allows for training and transition while classes are not in session.

"We are mindful that many faculty will not be on campus during spring break, but it was important to make the migration before summer, when even more WSU employees are away," said **Ty Nalor**, who is the communication, events and training coordinator for Information Technology. "We encourage everyone to take advantage of the training opportunities that will be held throughout February and into early March, so they are prepared for the transition."

Faculty and staff can sign up for training sessions in Training Tracker. Look for "Introduction to Gmail," "Introduction to Google Calendar" and "Google for Administrative Assistants." Additional tutorials are available at gmail.weber.edu.

On March 1, faculty and staff will access new email via gmail.weber.edu, and use the same password and weber.edu email name as their GroupWise accounts. It will take approximately one week to move existing email and contact lists from GroupWise to Gmail. GroupWise will be available until that occurs.

Approximately 100 individuals around the university have been beta testing Google Apps. They report most features are intuitive, but some of the language and processes will take a little training and practice. For example, the GroupWise "busy search" will be called "find time" on Google Apps. But using the find time feature can actually save a great deal of time.

"If I have 10 people scheduled for a meeting in a specific room, and suddenly I have to cancel, I click one button, and it will find the next time all 10 people, plus the room, are available," Naylor said. "It's like busy search on steroids."



This Issue

Groupwise to Google pages **1 & 2**

Calendar of Events page **3**

Employee Awards page **4**

The Art of Giving

"I love my job. Looking back, I would have done it for free," **Caril Jennings** said with a look that is distinctively hers, one that exudes enthusiasm, seriousness and playfulness all at once. The marketing director for Weber State University's Department of Performing Arts, Jennings will retire this spring. When she exits the stage after 22 years at WSU, she will have given more than \$10,000 to the university.

"From the time I was in kindergarten and learned to sing, I've loved the arts," said Jennings, whose office is colored with paintings by her husband and countless binders of art she's created to promote plays, festivals, dances, lectures and more. "The arts make us human and call us up to think higher thoughts. I really believe that and thought, 'I should put my money where my mouth is.'"

She started with a \$5 donation per paycheck, via payroll deduction, to the Friends of the Stewart Library. "The library needed help; I love literature. So I gave," Jennings said. Shortly after, she received a cost-of-living raise. "So I started giving \$10 each paycheck."

Today she donates to 10 different funds.

(continued on page 2)



(continued on page 2)

FACULTY AND STAFF ACCOMPLISHMENTS

Communication professor **Susan Hafen** wrote a chapter titled "Listening with the Third Eye: A Phenomenological Ethnography of Animal Communicators" for a new book called *Perspectives on Human-Animal Communication: Interpersonal Communication*. Published by Routledge, the book is part of a series on rhetoric and communications.

The Utah System of Higher Education recently renewed a \$40,000 ImPACT grant (Improving Preparation, Access and Communities Together), which helps fund continuation of Weber State's Student-to-Student program. Directed by **Ashá Jones** and administered through WSU's Education Access and Outreach Office, the program works with 10 high schools in Weber and Davis counties to help provide a pathway to higher education for under-represented youth.

Brandon Koford, assistant professor of economics, co-authored "Estimating Consumer Willingness to Supply and Willingness to Pay for Curbside Recycling" in the November 2012 issue of the journal *Land Economics*. The paper tests the effectiveness of explicit monetary and communication appeals to influence the decision to recycle curbside. The paper also estimates the economic benefits to households that utilize curbside recycling.

Kathryn Van Wagoner, director of developmental mathematics, was recognized by the Southwest Association for Developmental Education for Outstanding Contributions to the Field of Developmental Education at the organization's annual conference. Van Wagoner has led the developmental mathematics department at WSU to implement changes focused on improving student motivation and success.



Why the Change?

One of the main reasons for making the transition to Google was to give faculty and staff easy access to their accounts while away from campus.

“When we began researching various email systems, one of the criterion was that it worked on all mobile devices.” Naylor said.

The Google Apps Sync Tool for Outlook uses the cloud to sync Google email to the Outlook client.

“That way if you prefer using a mail client, which I do, you can use Microsoft Outlook on any device and have almost all the features you have with the web version,” said **Heidi Parker**, the academic web services manager for Academic Technologies Training and Planning and one of the beta testers. “However, you can still use the web version whenever you are away from your desktop, and Outlook will synchronize the changes you made.”

Google Apps had an attractive educational package already in use by 74 of the top 100 universities around the country.

Some of the features include:

- Easy email search capability;
- Twenty-five gigabytes (GB) of storage for email, which potentially can accommodate thousands of emails, even those with PDF attachments;
- Five GB of storage for personal files, including documents, presentations, spreadsheets and forms;
- High-definition video chatting between as many as nine individuals; and
- Ability to make calls and receive voicemail via computer.

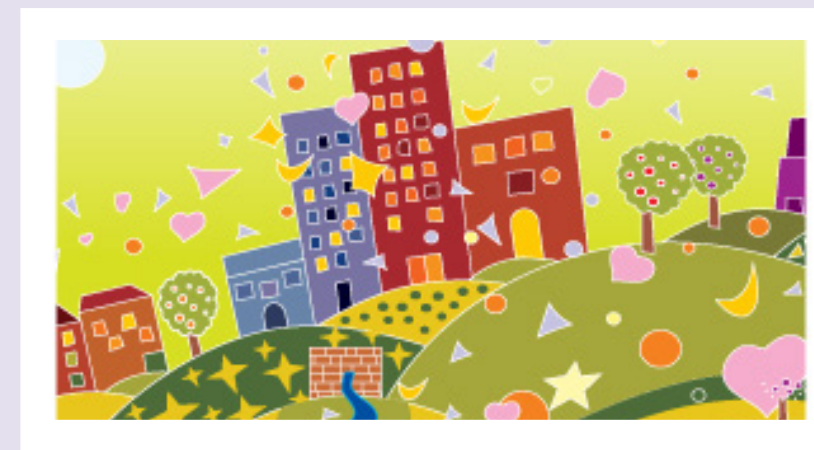
Last year students transitioned to Gmail. Now with the entire university on the same system, calendaring and collaboration will be even easier.

Some, like the Jerrilyn G. Christian Theatre Scholarship and Dr. John M. Elzey Memorial Scholarship Fund, pay tribute to friends. Others, like the String Project Gift Fund and the Friends of the Performing Arts, embrace her personal interests.

“With every pay increase I received, I would make another donation. I knew giving to Weber State was a sound investment. I knew the school — I stand behind our mission 100 percent — I knew the people; I knew the students. I knew that my money was going directly to real people in my community, and I’ve never thought twice about it.”

Jennings laughingly admits that she never paid much attention to the amount she was giving and was “quite unaware of how it was adding up.”

“I can’t think of one thing I would have bought extra if I had kept the money for myself. I live a modest life, but it’s perfectly sufficient for me. I’ve got my family, I’ve had a job I’ve loved for 22 years, and I’ve been surrounded by art. That makes me rich.”



17th Annual Storytelling Festival

getintoweber

Feb. 25-27: The 17th Annual Storytelling Festival features a number of performances including “Storytelling With Origami,” “Tales to Remember” and “Campfire Tales.” The events, which are free and open to the public, will be held in various locations. Find a complete schedule at community.weber.edu/storytelling.

Feb. 26: The Department of Performing Arts presents WSU’s Wind Ensemble concert, 7:30 p.m., Val A. Browning Center Allred Theater, \$7/\$6. Tickets/information: 1-800-WSU-TIKS or weberstatetickets.com.

Feb. 27: The Community Involvement Center presents Julie Rich, assistant geography professor and 2012 recipient of the John A. Lindquist Award, who will discuss “Dancing the Map, Water, and Swingsets: A Journey of Service,” 1:30-2:30 p.m., Stewart Library Hetzel-Hoellein Room.

Feb. 28: Women’s basketball vs. Sacramento, 8 p.m., Dee Events Center, \$7/\$5/\$3/free to WSU students with Wildcard ID. Tickets/information: 801-626-8500 or weberstatetickets.com.

March 4-8 Spring Break

March 7: Men’s basketball vs. Portland State, 7 p.m., Dee Events Center, \$26/\$23/\$19/\$16/\$12/\$10/\$8/free to WSU students with Wildcard ID. Tickets/information: 801-626-8500 or weberstatetickets.com.

March 12: “Weber Reads: Emily and the American Poetic Traditions,” will feature English professor Russ Burrows, 12:30 p.m., Stewart Library Hetzel-Hoellein Room. Find a complete schedule at weber.edu/weberreads.

WELCOME TO WSU

- Christy Achter**, Medical Laboratory Sciences
- Mathew Daley**, Facilities Management
- Jenny Eckenbrecht**, History
- Angela Fuller**, Student Success Center
- Amy Hajdas**, University Communications
- Dwayne Hansen**, Teacher Education
- Kimber Harding**, Student Health Center
- Jeremy Harvey**, Academic Tech Training and Planning
- Cristine Jennings**, Developmental Math
- Kimi Kawashima**, College of Arts & Humanities
- Wendy Fox Kirk**, Business Administration
- Jamie Luna**, Social Work
- Carol McNamara**, Political Science and Philosophy
- Rebecca Nestoryak**, Printing Services
- Ryan Pringle**, Accounting Services
- Jacob Serio**, Facilities Management
- Brittney Snyder**, College of Health Professions
- Carla Wiggins**, College of Health Professions
- Dustin Woodard**, Academic Tech Training and Planning

ON THE MOVE/PROMOTED

- Scott Chantry**, Continuing Education
- Nancy Jarvis**, Office of Sponsored Projects
- Jonathan Sears**, Library

RETIRED

- Robb Alexander**, Development
- Carole Lapine**, Network Technology and Business Multimedia

CAMPUS NEWS BRIEFS

New Charter Academy

Weber State University will open Utah’s first charter academy authorized by an institution of higher

education. The academy will focus on educating children as a whole, using developmentally appropriate and research-supported curriculum and instruction.

Weber State University Charter Academy (WSUCA) will begin with a kindergarten in the fall of 2013 and be located next to the Melba S. Lehner Children’s School in the McKay Education Building.

Jack Rasmussen, dean of the Jerry & Vickie Moyes College of Education said the opening is an invigorating opportunity. “We are pleased to be able to have an on-site kindergarten where our faculty and students can participate in teaching, learning and research.”

The charter academy was created by a group of educators from the College of Education with a vision of faculty, students and families working together to develop children’s academic, social, emotional and physical capabilities.

Parents wishing to enroll their children in WSUCA must submit a lottery application form online by Feb. 28. If the number of applicants exceeds the number of available seats in the academy, the college will hold a lottery March 14 at 7 p.m. in the Shepherd Union Ballroom.

Center for Sales Excellence Announced

Plans for the new Alan E. Hall Center for Sales Excellence were unveiled at a news conference Feb. 1. The center will enhance the reputation and resumes of technical sales graduates.

A pledge of \$3.5 million from **Alan Hall**, entrepreneur and WSU Board of Trustees chair, helped launch the initiative.

The only one of its kind in Utah, the center will help find creative ways to stimulate and grow the economy. “We will focus on the most important aspect of sales — the customer,” Hall said.



The effort will enhance Weber State’s successful technical sales program by providing insights, training and momentum for students and businesses alike. “We’re proud of the sales program we’ve built here,” said **Desiree Cooper Larsen**, professor

of sales services and technology. “When we follow up with our graduates, they tell us they’re amazed at the real-world experience our technical sales program provided. We look forward to building this legacy with the Alan E. Hall Center for Sales Excellence.”



UNIVERSITY NEWS

is published by the Office of University Communications. Send submissions & comments to mail code 4025; email: ahess@weber.edu; or call ext. 7359.