

# Sharing the Dream: Inauguration Events for President Charles A. Wight

Celebrate the formal inauguration of Charles A. “Chuck” Wight, Weber State University’s 12th president, on Oct. 22. A week of festivities will surround the occasion based on the theme “Sharing the Dream.”

Oct. 19



Weber State University students, faculty and staff will paint the town purple – not to mention a palette of other bright colors – during *Chuck’s College Town Color Dash*. The dash, a 5K fun run, will begin at WSU at 8 a.m. and end at the Ogden Amphitheater.

Runners will receive a white T-shirt, sunglasses, snacks and a color packet as part of their registration and will run through clouds of colored cornstarch at the start, four color stations on the route and at the end.

All proceeds from the run will benefit Dream Weber, a program dedicated to providing tuition and general student fees to students with an annual household income of \$30,000 or less. Discounts are available for early registrants. Register at [weber.edu/colordash](http://weber.edu/colordash).



The **Weber State University football** team will take on Montana State University at home at 3:30 p.m. The Wildcats will battle the Bobcats in WSU’s eighth game of the season.

Oct. 22



**Charles A. Wight** will officially be *inaugurated* as WSU’s president at the Val A. Browning Center Austad Auditorium at 2 p.m. The president will outline his vision for the university, and a reception in the Browning Center lobby will follow.

Oct. 25



**Imagine Dragons** will conclude celebrations with a bit of rock ‘n’ roll. The band, which began in Provo, was declared the breakthrough band of 2013 by Billboard magazine. Their debut album, “Night Visions,” was listed as No. 2 on the Billboard Top 200 Chart.

Tickets are available at the Dee Events Center, Browning Center, Campus Stores or [weberstatetickets.com](http://weberstatetickets.com), but they are going fast.

## WSU BRANDING GUIDE

Have you noticed recently that the “Flaming W” looks a little different? Or the university name in the corner of the [weber.edu](http://weber.edu) website?

University Communications has updated WSU’s graphic marks to make sure they look great no matter how big or—in this world of mobile technology—small they need to be.

These updates are part of a larger effort: the creation of Weber State University’s new branding guide. The guide is intended to assist anyone at WSU who communicates about the university with an external audience, whether it’s in print, online, video, etc. The guide contains:

- Download files of the new WSU logo and graphics
- Instructions for logo use
- WSU’s standard color palette and fonts
- Writing tips and WSU style guide

Please visit the branding guide at [weber.edu/brand](http://weber.edu/brand). It is a work in progress that will continue to grow and provide more resources. Let us know if you have any feedback, questions or suggestions for items you’d like to see.



[weber.edu/brand](http://weber.edu/brand)

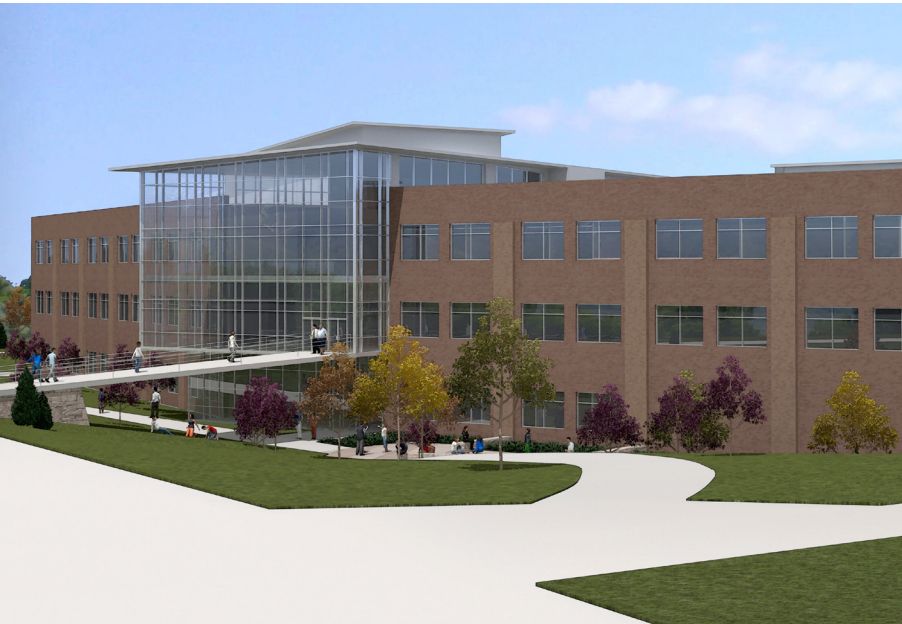


## Almost 125 years later, WSU still ‘Growing’ Strong

On November 10, 1889, a headline in the Standard-Examiner announced, “A Chance for All — Anyone Can Attend School for an Hour Each Day.” That school was Weber Stake Academy, and although it didn’t have a permanent location at the time — classes were held in the Second Ward Chapel and Ogden’s LDS Tabernacle until a dedicated building was constructed downtown in 1891 — its commitment to “serving the public with education” was unwavering.

Much has changed since Weber State University’s humble beginning as an academy — names, locations, programs, size — but its dedication to students has remained steadfast. This fall, in the spirit of continued growth and learning, WSU celebrates its newest buildings — facilities that will enhance campus experiences and provide enriching environments for students.

WSU DAVIS. The new building in Layton includes classrooms and laboratories to accommodate nursing, electronics engineering, construction management, interior design and other high-demand programs. Other elements include a food court, fitness area and event space. The building is also the home for the Northern Utah Academy for Math, Engineering & Science (NUAMES).



(continued on page 2)

## This Issue

‘Growing’ Strong pages **1** & **2**

Changes in Faculty & Staff page **3**

Inauguration Events page **4**



## FROM THE ARCHIVES

As Weber State prepares to celebrate its 125th birthday, **Jamie Weeks**, associate curator of Digital and Archival Collections, will share some of her favorite photos from our history.

In the photo above, look closely at the date on the ball — 1902. Just 13 years after its founding, the Weber Stake Academy had a women’s basketball team, with a schedule that included L.D.S. University and Brigham Young College. Also in 1902, 10 students received their diplomas, and the first principle of the institution, Louis F. Moench, retired.

In his book, “Weber State College: A Centennial History,” **Richard Sadler** noted by 1902, “the school was past the stage of survival at birth and well into the struggles of an infant educational institution.”



(“Growing” Strong continued)



**STROMBERG COMPLEX.** The expansion, known as the Wildcat Center for Health, Education and Wellness, includes an elevated track for recreational runners/walkers, a new fitness area and two group-exercise studios. It also houses WSU’s Campus Recreation program.



**WEBER COUNTY SPORTS COMPLEX,** formerly the **THE ICE SHEET.** Connected to the existing structure, the new two-story building houses a secondary ice sheet, as well as an indoor training facility and practice field dedicated to Weber State sports. The complex is a joint venture between WSU and Weber County.



**WILDCAT VILLAGE RESIDENCE HALL 3.** The final phase of WSU’s innovative student living community features a “pod-style” layout. Wildcat Village, with three buildings totaling 172,150 square feet, houses more than 500 students.



**WEBER STATE DOWNTOWN:** Located at 2314 Washington Boulevard, the newly renovated space will house a Weber State store, classroom space for Continuing Education and WSU’s new App Center — a business incubator for mobile app development.

SAVE THE DATE:

On Jan. 7, 2014, Weber State University will celebrate its 125th anniversary with campus-wide activities. Watch for announcements in WSU News and on [weber.edu](http://weber.edu).

## WELCOME to WSU

Eulogio Alejandro, *Education Access and Outreach*  
Mary Kay Amicone, *Women’s Softball*  
Clinton Amos, *Business Administration*  
Pamela Anderson, *Nursing*  
Suzanne Aragon, *Education Access and Outreach*  
Rachel Bachman, *Mathematics*  
William Bailey, *Accounting & Taxation*  
Eli Baker, *Registrar’s Office*  
Christopher Barragan, *Development*  
Linda Benson, *Nursing*  
Tamara Berghout, *Nursing*  
Barrett Bonella, *Social Work*  
Jamie Brass, *Psychological Services Counseling & Psychological Services*  
Sebastian Brockhaus, *Business Administration*  
Jeremy Bryson, *Geography*  
Kathleen Cadman, *Nursing*  
Thelma Carter, *Nursing*  
Fred Chiou, *Electronics*  
Mickey Cole, *Psychology*  
Rachael Combe, *Financial Aid Office*  
Nicola Corbin, *Communication*  
Kenton Cummins, *Medical Lab Sciences*  
Emily Davidson, *Campus Recreation*  
Shirley Dawson, *Teacher Education*  
Andrew Deceuster, *Manufacturing Engineering Technology*  
Christine Denniston, *Performing Arts*  
Mark Denniston, *Criminal Justice*  
Heidi Drysdale, *Management*  
William DuPont IV, *Economics*  
Stephanie Ence, *Admissions Office*  
Bonnie Farr, *Child and Family Studies*  
Amydee Fawcett, *Business Administration*  
Aaron Feller, *Research Support Services*  
Alberto Florez, *Facilities Management*  
Augusto Garcia, *Stewart Library*  
Shawn Gentry, *Facilities Management*  
Michelle Gifford, *Financial Aid Office*  
Andrea Gouldman, *Accounting & Taxation*  
Jessica Greenberg, *Performing Arts*  
James Hansen, *Accounting & Taxation*  
Eric Harvey, *Communication*  
Robert Head, *Small Business Development Center*  
Michael Henderson, *Campus Recreation*  
Teresa Henke, *Child and Family Studies*  
Bonnie Hofland, *Teacher Education*  
Lisa Hopkins, *Accounting & Taxation*  
Julia Hunt, *Printing Services*  
Jonathan Jacobazzi, *Maintenance*  
Jacie Johnson, *Sales and Service Technology*  
Charity Jones, *Developmental Math*  
Russell Jones, *Facilities Management*  
Janine Joseph, *English*  
Julia Krey, *Admissions Office*  
Kathleen Laird, *Nursing*  
Patrick Leytham, *Teacher Education*  
Kimberly Lynne, *Stewart Library*

Michael Maynor, *Facilities Management*  
Kellen McCoy, *Athletics Administration and Support*  
Shannon McGillivray, *Psychology*  
Beth Moore, *Nursing*  
Cass Morgan, *Health Promotion and Human Performance*  
Molly Morin, *Visual Arts*  
Maria Mortensen, *Continuing Education*  
Brian Motes, *Purchasing*  
Toby Nishikawa, *Nursing*  
Kathleena Nygaard, *Athletics Administration and Support*  
Hollie Orton, *Developmental Math*  
Jose Otero, *English*  
Sammy Owen, *University Police*  
Shelly Park, *Academic Support Centers*  
Kacy Peckenpaugh, *Foreign Language*  
Brandon Petrizzo, *Printing Services*  
Jeffrey Richey, *History*  
Monte Roberts, *Nursing*  
David Rodeback, *College of Health Professions*  
Rong Rong, *Economics*  
Laura Santurri, *Health Promotion and Human Performance*  
Taufiq Shah, *Emergency Care and Rescue*  
Holli Sowerby, *Nursing*  
Matthew Spencer, *Development*  
Ashley Stringham, *Admissions Office*  
Alison Sunderland, *Computer Science*  
Kandi Tait, *Medical Lab Sciences*  
Letitia Teneau, *Charter Academy*  
Christopher Trampel, *Engineering*  
Sandra Thomas, *Continuing Education*  
Terry Tolman, *Campus Store*  
John Trimble, *Foreign Languages*  
Jennifer Unguren, *Student Affairs*  
Hugo Valle, *Computer Science*  
Brett Vana, *Athletics Administration and Support*  
Robert Wadman, *Criminal Justice*  
Adrianna West, *Child and Family Studies*  
Kyle Whitaker, *University Police*  
Kristie White, *Registrar’s Office*  
Janette Wilkinson, *Developmental Math*  
Noel Wilkinson, *Nontraditional Student Center*  
Monica Williams, *Criminal Justice*  
Stephanie Wolfe, *Political Science and Philosophy*  
Gengsheng Zeng, *Engineering*

Lynette Jensen, *Continuing Education*  
Jackelyn Luther, *Health Promotion and Human Performance*  
Cory Moss, *Health Professions*  
Charlene Nelson, *Career Services*  
Lori Ornelas, *Development*  
Ryan Parent, *Facilities Management*  
Sean Peek, *Academic Support Centers*  
Jared Stetson, *Facilities Management*  
Benjamin Taylor, *Campus Store*  
Barbara Trask, *Zoology*  
Carol VandenAkker, *College of Education*

## Retired

Cindy Adams, *Financial Aid Office*  
Lon Addams, *Business Administration*  
Laurel Barlow, *English*  
James Bird, *Child and Family Studies*  
Lloyd Burton, *Health Administration Service*  
Merlin Cheney, *English*  
Bruce Christensen, *Business Administration*  
Erika Daines, *Foreign Language*  
David Durkee, *Accounting & Taxation*  
Claudia Eliason, *Teacher Education*  
James Foster, *Mathematics*  
Linda Forest, *Nursing*  
Dawn Gatherum, *Botany*  
Nancy Haanstad, *Political Science and Philosophy*  
William Handley, *Business Administration*  
Verne Hansen, *Manufacturing Engineering Technology*  
Carole Haun, *Child and Family Studies*  
John Hoffman, *Administration*  
Robert Hogge, *English*  
John Ibarguen, *History*  
Caril Jennings, *Performing Arts*  
Carol Jensen, *Sociology*  
Marie Kotter, *Health Sciences*  
Mary Krantz, *English*  
Charles Litchford, *Sales and Service Technology*  
Pamela Molen, *Nursing*  
Leslie Moore, *Development*  
Leonard Nielsen, *Medical Lab Sciences*  
Michael Palumbo, *Performing Arts*  
Kaycee Paskins, *Continuing Education*  
Paul Pitts, *Teacher Education*  
Sandra Powell, *Business Administration*  
Judith Pratt, *Nursing*  
Carol Richards, *Printing Services*  
Leanna Riddle, *Honors Program*  
Randolph Scott, *Communication*  
Spencer Seager, *Chemistry*  
Terry Shaw, *Dee Events Center*  
Ronald Skocki, *Economics*  
Jennifer Smith, *Engineering*  
Jeffery Stokes, *Foreign Languages*  
James Swearingen, *Accounting & Taxation*  
Alden Talbot, *Network Technical and Business Multimedia*  
Gary Willden, *Health Promotion and Human Performance*

## Purchasing Reminder

Effective Oct. 1, 2013, Weber State University’s Purchasing Card management system will transition to J.P. Morgan PaymentNet. This new system uses state-of-the-art technology designed to increase efficient management of individual WSU Purchasing Card accounts.

### What to Expect

- You will use a new website to access your account: [paymentnet.jpmorgan.com](http://paymentnet.jpmorgan.com).
- Purchasing will email your organization ID, username and password just prior to the date of transition.
- Purchasing will email training materials within the next few weeks that will discuss:
  - System navigation
  - Viewing transactions and account balances
  - Viewing, downloading and printing monthly statements
  - Additional support



**UNIVERSITY NEWS** is published by the Office of University Communications.  
Send submissions and comments to mail code 4025; email: [ahess@weber.edu](mailto:ahess@weber.edu); or call ext. 7948.