



# WEBER STATE UNIVERSITY

---

Dumke College  
of Health Professions

ANNIE TAYLOR DEE  
— SCHOOL OF —  
**NURSING**

**Student Handbook**

**Academic 2021- 2022**

## Table of Contents

Handbook Part A .....	4
Section I: Annie Taylor Dee School of Nursing Organizational Chart .....	5
Section II: WSU and Annie Taylor Dee SON Overview.....	6
I. Weber State University Mission Statement.....	6
II. Weber State University Core Themes .....	6
III. Annie Taylor Dee School of Nursing (SON) Vision and Mission Statements.....	6
IV. Annie Taylor Dee Support of Weber State University Core Values .....	7
V. Annie Taylor Dee Philosophy .....	8
Section III: Outcomes and Graduate Competencies .....	9
I. Annie Taylor Dee SON Outcomes.....	9
II. Annie Taylor Dee SON End of Program Student Learning Outcomes (EPSLOs) .....	9
III. Annie Taylor Dee Differentiated End of Program Student Learning Outcomes .....	10
IV. Concept-based Curriculum .....	12
Handbook Part B .....	18
Section I: Annie Taylor Dee SON Requirements.....	19
I. General Guidelines for all Annie Taylor Dee SON Students .....	19
II. Essential Requirements for Student Success.....	19
II. Program Technology Requirements .....	22
III. Student Academic Advisement .....	22
IV. Student Documentation.....	22
V. Policies that Apply to Students in Programs Requiring Clinical Assignment.....	25
Section II: Academic Standards and WSU Annie Taylor Dee SON Response to Violation of Academic Integrity Policy.....	28
I. General Guidelines of Academic Standards and Violations .....	28
<b>E. Online Netiquette Guidelines</b> .....	29
II. Academic Standards.....	29
III. Levels of Violations and Sanctions.....	30
IV. Guidelines .....	31
V. Documenting and Reporting Violations .....	31
Section III: Professional Conduct/Behavior.....	33
I. General Professionalism Expectations .....	33
II. Annie Taylor Dee SON Competencies and Expected Professional Conduct/Behaviors.....	33
III. Annie Taylor Dee SON Response to Violation of Professional Conduct/Behavior .....	35
IV. Unprofessional Conduct Related to Students Practice of Nursing.....	36
V. Readmission/Reapplication/Leave of Absence/Dismissal from Program .....	36
VI. WSU Student Due-Process Policy (PPM 6-22) .....	37
VII. Process of Resolution .....	37

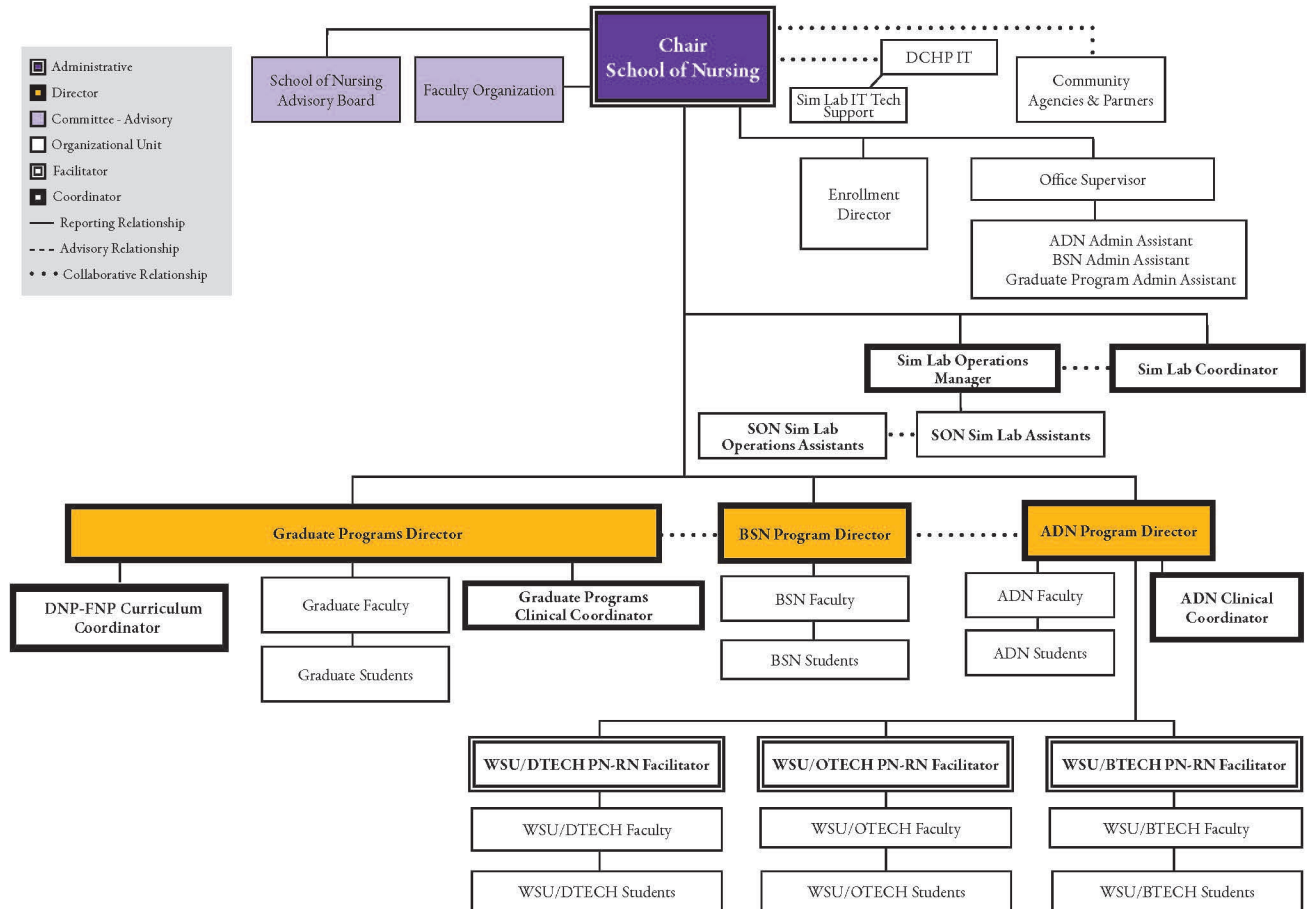
Annie Taylor Dee School of Nursing Handbook 2021-2022

Section IV: Resources for Student Support ..... 39  
    I. Available Resources ..... 39  
Section V: Student Academic/Behavioral Documentation Form..... 40  
Handbook Part C .....41

**Weber State University**  
**Dumke College of Health Professions**  
**Annie Taylor Dee School of Nursing**

**Handbook Part A**  
**Annie Taylor Dee School of Nursing**  
**Structure & Organization**

## Section I: Annie Taylor Dee School of Nursing Organizational Chart



Rev. 6/2021

## **Section II: WSU and Annie Taylor Dee SON Overview**

### **I. Weber State University Mission Statement**

Weber State University (WSU) provides associate, baccalaureate, and master degree programs in liberal arts, sciences, technical, and professional fields. Encouraging freedom of expression and valuing diversity, the university provides excellent educational experiences for students through extensive personal contact among faculty, staff, and students in and out of the classroom. Through academic programs, research, artistic expression, public service, and community-based learning, the university serves as an educational, cultural, and economic leader for the region.

### **II. Weber State University Core Themes**

- A. With the purpose of continuously improving the university in pursuit of the mission, the University Planning Council interpreted the mission as having three fundamental themes:
1. The **ACCESS** theme directs the university to provide access to academic programs in liberal arts, sciences, and technical and professional fields.
  2. The **LEARNING** theme directs the university to provide an engaging teaching and learning environment that encourages learning and leads to students' success.
  3. The **COMMUNITY** theme directs the university to support and improve the local community through educational, economic, and public service partnerships; and cultural and athletic events.
- B. For more detailed information regarding the [University's Mission Statement and Core Themes](http://www.weber.edu/universityplanning/mission_and_core_themes.html), ([http://www.weber.edu/universityplanning/mission\\_and\\_core\\_themes.html](http://www.weber.edu/universityplanning/mission_and_core_themes.html))

### **III. Annie Taylor Dee School of Nursing (SON) Vision and Mission Statements**

#### **A. Vision Statement**

The Annie Taylor Dee School of Nursing will be recognized for preparing nurses as leaders and life-long learners who are passionately engaged in caring for diverse populations and transforming healthcare in local and global communities.

#### **B. Mission Statement**

The mission of the Annie Taylor Dee School of Nursing is to prepare nursing professionals with knowledge, skills, and attitudes to care and advocate for the evolving needs of diverse individuals, families, and society. We collaborate with our partners to provide an education that values equity, diversity, inclusivity, and community-centered health promotion.

#### **C. Core Values**

The Annie Taylor Dee SON core values are:

- Social Justice
- Innovation
- Evidence-based Practice
- Community Engagement
- Interprofessional Education
- Professionalism

## **IV. Annie Taylor Dee Support of Weber State University Core Values**

### **A. Learning through Personalized Experiences and Shared Inquiry**

- Designing curricula and delivery methods to meet the needs of our changing health care system and growing student population
- Providing Graduate Programs to prepare students to enter doctoral education and/or advanced practice roles
- Providing multi-disciplinary learning environments that foster critical thinking and prepare students to determine and meet the needs of a diverse patient population
- Routinely updating curriculum-to foster knowledge and promote clinical reasoning in the academic and patient-care environment
- Completing a state of the art simulation lab to enhance the advanced application of outcomes

### **B. Engagement in Community**

- Fostering educational partnerships which provide unique learning opportunities for nursing students, especially in the areas of home health, geriatrics, and mental health
- Collaborating with technical colleges to enable educational opportunities for the advancement of nursing education
- Responding to the community need to increase the number of Bachelor of Science in Nursing (BSN) graduates to meet the standard put forth in the Future of Nursing Report (2010) of having 80% of the RN workforce be BSN prepared by the year 2020
- Actively seeks input and partnerships through the inclusion of a community Advisory Board to act as advisors to the Annie Taylor Dee SON
- Students participate in a variety of community service opportunities across programs

### **C. Access and Opportunity**

- Meeting the demand for entry-level practice for baccalaureate-prepared nurses by expanding the BSN Program through evidence-based methods
- Conducting analytical reflection of face-to-face, hybrid, and online courses and programs that provide education to a variety of adult-learning styles
- Developing and providing scholarships, and proactive committees, that are earmarked to increase diversity within the student population and consequently the diversity within the nursing profession in our community
- Maintaining sequenced preparation for higher education by adhering to the WSU Stackable Credentials
- Distance Education: Annie Taylor Dee SON offers variable learning environments, which include: face-to-face, hybrid/technical enhanced, and online classrooms. These are defined by WSU and can be found at the [Continuing Education site](https://continue.weber.edu/flexiblelearning) (<https://continue.weber.edu/flexiblelearning>)

### **D. Respect for People and Ideas**

- Promoting a collegial environment which encourages and recognizes scholarly work
- Implementing a multi-disciplinary learning environment which includes other health care disciplines within the Dumke College of Health Professions (DCHP)
- Creating awareness of diversity and how this awareness benefits the university, the college, the Annie Taylor Dee SON, and the community

### **E. Nurturing the Potential within Every Individual**

- Promoting and retaining outstanding faculty

- Recruiting and nurturing high-achieving students from all backgrounds
- Developing interdisciplinary activities which broaden the nursing student's nurturing abilities and perspective of safe patient care
- Conducting an ongoing evaluation of learning activities that promote and expand student success

## **V. Annie Taylor Dee Philosophy**

### **A. Philosophy and Core Values**

The philosophy of the WSU Annie Taylor Dee SON faculty is consistent with that of the University and the DCHP. The philosophy statements define the faculty's core values as they relate to professional nursing education and practice. These core values include excellence in nursing education and practice; respect for self and the diversity found within others; the creation of an inclusive environment in which students can learn the practice of nursing; organizational and personal accountability; and the promotion of a learning and nursing practice environment that exhibits integrity in both choice and action.

## **VI. Annie Taylor Dee Son Stackable Credentials**

- A.** Meeting the complex healthcare needs of a global society requires varying patterns and levels of nursing education and practice. The WSU Annie Taylor Dee SON's approach to nursing education offers four separate but coordinated programs of study: Associate Degree Nursing, PN to RN (AS/AAS), Bachelor of Science Nursing (BSN), Master of Science Nursing (MSN), Post BSN to DNP- Family Nurse Practitioner (FNP), and Post Masters to DNP-Leadership. Each program level prepares the graduate to either practice nursing or provides leadership within increasingly complex roles and broader levels of autonomy. This progression model, or stackable credentials nursing education model, affords the nursing student, each with a unique set of life challenges, the opportunity to engage in life-long learning and expand within his or her professional, cultural, personal, and social roles.
- B.** The WSU Annie Taylor Dee SON offers multiple options for undergraduate preparation at the AD, PN-RN, and RN-BSN levels. In addition, the options at the graduate level include nursing executive, nursing education, Post Masters to DNP-Leadership, and Post BSN to DNP – Family Nurse Practitioner (FNP). The WSU Annie Taylor Dee SON's primary goals and curricular framework combine coursework in the liberal arts and sciences with those required within the nursing curriculum.
- C.** Program-specific curricula and outcomes are designed to prepare the graduate to fulfill the roles and responsibilities established by the following national standards and guidelines:
- Accreditation Commission for Education in Nursing (ACEN)
  - American Association of Colleges of Nursing (AACN)
  - American Nurses Credentialing Center (ANCC)
  - American Nurses Association (ANA)
  - American Organization of Nurse Executives (AONE)
  - National League for Nursing (NLN)
  - Quality and Safety Education for Nurses (QSEN)
  - National Organization of Nurse Practitioner Faculty (NONPF)
  - American Association of Nurse Practitioners (AANP)
  - National Patient Safety Goals (NPSG)



## Section III: Outcomes and Graduate Competencies

### I. Annie Taylor Dee SON Outcomes

- A. The WSU Annie Taylor Dee SON Program Outcomes are developed to ensure the mission and goals set by the administration and faculty are met.
- B. Documentation of outcomes shows the effectiveness of the educational program and serves to guide the maintenance and revision of WSU Annie Taylor Dee SON components.
- C. Following graduation from WSU Annie Taylor Dee SON programs, the following outcomes will be achieved:

Program evaluation demonstrates that students have achieved each end-of-program student learning outcome and each program outcome. The Annie Taylor Dee SON Program Outcomes are:

- **Outcome #1:** 80% of WSU Annie Taylor Dee SON students will graduate from their programs within 150% of the stated length of the program.
- **Outcome #2:** 80% of WSU Annie Taylor Dee SON graduates seeking employment will be involved in role-related professional practice within 6-12 months of graduation as reported on the *SON Alumni Survey*
- **Outcome #3:** 80% of those students who take certification/NCLEX licensure exams will pass on the first attempt

WSU Annie Taylor Dee SON Program Outcomes will be measured annually through the following methods:

- Program completion rates
- Employment rates 6 months after graduation
- NCLEX scores
- Certification rates

### II. Annie Taylor Dee SON End of Program Student Learning Outcomes (EPSLOs)

- A. The WSU Annie Taylor Dee SON has adopted the following competencies for its undergraduate and graduate programs. These competencies are adopted from the Quality and Safety Education for Nurses Initiative (QSEN).
  - **Patient-centered Care:** Recognize the patient or designee as the source of control and full partner in providing compassionate and coordinated care based on respect for patients' preferences, values, and needs.
  - **Teamwork and Collaboration:** Function effectively within nursing and inter-professional teams, fostering communication, mutual respect, and shared decision-making to achieve quality patient care.
  - **Evidence-based Practice:** Integrate best current evidence with clinical expertise and patient/family preferences and values for delivery of optimal health care.
  - **Quality Improvement:** Use data to monitor the outcomes of care processes and use improvement methods to design and test changes to continuously improve the quality and safety of health care systems, including participating in healthcare policy.
  - **Patient Safety:** Minimize risk of harm to patients and providers through both system effectiveness and individual performance.

- **Informatics:** Use information and Technical to communicate, manage knowledge, mitigate error, and support decision-making.

**B.** The WSU Annie Taylor Dee SON EPSLO will be measured annually through the following methods (Refer to Course Maps [Standard 4] for alignment of course outcomes/units and assignments to Annie Taylor Dee SONEPSLOs):

- Students will report obtainment of Program Level Student Learning Outcomes at or above a 3.0/5.0 on the EOP Survey
- 85% of students will receive a minimum of a B- or above for aggregate coursework (Course Grades)
- 85% of students will meet EPSLOs signature assignments criteria.

### III. Annie Taylor Dee Differentiated End of Program Student Learning Outcomes

SON EPSLOs	Associate Degree Nursing (ADN)	Bachelor of Science Nursing (BSN)	Master of Science Nursing (MSN)	Doctor of Nursing Practice (DNP)
<b>Patient-Centered Care</b>				
Recognize the patient or designee as the source of control and full partner in providing compassionate and coordinated care based on respect for patients' preferences, values, and needs.	Use nursing knowledge to include the patient in all care processes and decisions. Design and implement care which is adapted and centered on the unique wholeness of the individual patient and their family.	Integrate nursing expertise to include the patient in all care processes and decisions. Collaborate with patients, families, and communities to design unique and dynamic patient-centered care environments.	Create and direct collaborative patient-centered care environments that promote the development of nursing expertise.	Develop and implement care delivery models and/or strategies of health promotion and risk reduction, illness prevention for individuals, families, and diverse populations across health care settings.
<b>Teamwork &amp; Collaboration</b>				
Function effectively within nursing and inter-professional teams, fostering communication, mutual respect, and shared decision-making to achieve quality patient care.	Promote collaborative clinical decision making with nursing and interdisciplinary colleagues through the implementation of effective communication and team-building skills.	Evaluate the ability to use effective communication and collaboration skills when working with patients, families, and colleagues. Adapt communication, leadership, and teambuilding skills, to promote quality, competent and successful decision-making by nursing and collaborative interdisciplinary teams.	Apply advanced communication strategies to support high-functioning interdisciplinary teams that support high quality, safe patient care.	Collaborate with interprofessional teams associated with complex practice and organizational issues by mentoring and leading in order to provide high-quality and safe health outcomes.
<b>Evidence-Based Practice (EBP)</b>				
Integrate best current evidence with clinical expertise and patient/family preferences and values for delivery of optimal health care.	Make judgments in practice substantiated with evidence that integrates nursing science and knowledge to provide competent care to individuals and families.	Make judgments in practice substantiated with evidence that synthesizes nursing science and knowledge and integrates with the provision of competent care to individuals, families, and communities.	Evaluate available evidence, expert opinion, and patient preferences to determine best practices. Evaluate the feasibility and appropriate evaluation methods for planned EBP interventions.	Practice at the highest quality/level of nursing, supported by/ based on/ integrating the most current scientific evidence, organizational and systems thinking, leadership principles, health policy, informatics, equity in health care, and ethics.
<b>Quality Improvement</b>				

## Annie Taylor Dee School of Nursing Handbook 2021-2022

Use data to monitor the outcomes of care processes and use improvement methods to design and test changes to continuously improve the quality and safety of health care systems, including participating in healthcare policy.	Monitor patient care outcomes to measure the effectiveness of patient care processes. Suggest and implement changes to improve the quality and safety of patient care.	Monitor outcomes to apply evidence-based interventions to improve the quality of health care systems.	Develop policies and processes based on the identification of best practices that improve the quality and safety of nursing care provided by health care systems.	Transform practice to impact the quality of health care and outcomes.
<b>Patient Safety</b>				
Minimize risk of harm to patients and providers through both system effectiveness and individual performance.	Incorporate patient safety goals into the plan of care for all patients.	Generate patient safety plans based on patient safety goals.	Incorporate patient safety principles into the development of comprehensive patient safety goals and safety education for nurses.	Influence health care policy relating to finance, access, safety, and quality, as it applies to practice regulation, and consumer advocacy.
<b>Informatics</b>				
Use information and technology to communicate, manage knowledge, mitigate error, and support decision making	Use information and technology to communicate, manage knowledge, mitigate error, and support decision making when providing direct patient care.	Use information and technology to communicate, manage knowledge, mitigate error, and support decision making in a variety of patient care and community settings.	Formulate policies, processes, and/or educational plans that leverage information technology to optimize information management, reduce errors, and support clinical decision-making.	Use information systems and technology resources to evaluate and implement quality improvement initiatives.

Reference: QSEN Institute. (2014). *Quality and safety competencies for nursing*. Retrieved from <http://qsen.org>

## IV. Concept-based Curriculum

“All learners do not need to learn all course content; all learners do need to learn the core concepts.” K. Bain, Ph.D.

Concepts for the Individual, Nursing, and Healthcare Domains

Category	Concept	Definition
<b>Individual Domain</b>		
<b>Biophysical</b>	Acid-Base Balance	Regulation of acidity and alkalinity in body fluids and conditions that contribute to imbalances. (7)
	Cellular Regulation	The functions cells perform to maintain homeostasis and conditions that contribute to alterations. (19)
	Comfort	“A sense of emotional, physical, and spiritual well-being and relative freedom from stress.” (9)
	Elimination	The secretion and excretion of body wastes from the kidneys and intestines and their alterations. (7)
	Fluids and Electrolytes	Processes that regulate the balance of water and electrolytes and conditions that contribute to imbalances. (7)
	Health	“Health is a state of complete physical, mental and social well-being and not merely the absence of disease or infirmity.” (16)
	Immunity	The body’s natural or induced response to infection and the conditions associated with its response. (7)
	Infection	The invasion of body tissue by microorganisms with the potential to cause illness or disease. (7)
	Inflammation	An adaptive response to what the body sees as harmful, such as an allergen, illness, or injury. Inflammation is typically characterized by pain, heat, redness, and swelling. (7)
	Intracranial Regulation	Processes that impact intracranial compensation and adaptive neurological function. (7)
	Peripheral Nerve Regulation	Processes that impact the neural structures that lie outside the brain and spinal cord. (9)
	Metabolism	All physical and chemical changes that take place to sustain life and conditions that contribute to imbalances. (19)
	Mobility	The body’s function of movement. The musculoskeletal system is composed of the bones that serve as the body’s framework and attachment sites of muscles, tendons, and ligaments. Innervated by the nervous system, contraction and relaxation of muscles allow movement at the joints. (7)
	Nutrition	The process by which the body ingests, absorbs, transports, uses, and eliminates nutrients in food. (7)
	Oxygenation	Mechanisms that facilitate or impair the body’s ability to supply oxygen to the blood. (18)
	Perfusion	Mechanisms that facilitate or impair circulation of blood through tissue. (7)
	Reproduction	The process of conception, gestation, and childbirth. (7)
	Sensory Perception	Receiving and interpreting stimuli from the environment and utilizing the sense organs and factors contributing to impaired response. (7)
	Sexuality	The sum of the physical, functional, and psychological attributes that are expressed by one’s gender identity and sexual behavior, whether or not related to the sex organs or to procreation. (7)
	Thermoregulation	The homeostatic process that balances heat production and heat loss to maintain the body’s temperature. (7)
Tissue integrity	Mechanisms that facilitate or impair skin and mucous membrane intactness. (7)	
<b>Developmental</b>	Growth and Development	Growth is an increase in physical size, and development is an orderly sequence of functions and capabilities that progress from simple to complex. (7)
<b>Psychological</b>	Accountability	An obligation or willingness to accept responsibility. This is an initial step needed to change behavior. (19)

## Annie Taylor Dee School of Nursing Handbook 2021-2022

	Addiction Behaviors	Compulsive, uncontrollable dependence on a chemical substance, habit, or practice to such a degree that cessation causes severe emotional, mental, or physiologic reactions. (19)
	Affect	The immediate and observable emotional expression of mood, mood that people communicate verbally and nonverbally, and the outward manifestation of what the individual is feeling. (19)
	Anxiety	A state of varying degrees of discomfort and uneasiness that is accompanied by responses that serve to protect. (7)
	Cognition	The brain's ability to process, retain, and use information. These abilities include reasoning, judgment, perception, attention, comprehension, and memory. These abilities are necessary to solve problems, learn new information, and interpret the environment. (7)
	Coping	The process through which the person manages the demands and emotions generated by the appraised stress. (7)
	Crisis	An event or situation in an individual's life that cannot be managed through the usual coping skills. Types of events or situations include developmental, situational, and social. (18)
	Culture	The knowledge and values shared by a society. (7)
	Diversity	Recognizing differences among "persons, ideas, values, and ethnicities," while affirming the uniqueness of individuals. (14)
	Empowerment	Is a multi-dimensional social process that helps people gain control over their own lives. It is a process that fosters power in people for use in their own lives, their communities and in their society, by acting on issues they define as important. (27)
	Family	Two or more individuals who depend on one another for emotional, physical, and/or financial support. (19)
	Grief and Loss	Loss is an actual or potential situation in which something that is valued becomes altered or no longer available. Grief is the subjective emotion and normal response to a loss. (19)
	Self	The sum of mind and body that constitutes the identity of a person. (18)
	Social Functioning	The ability of the individual to interact in the normal or usual way in society; can be used as a measure of the quality of care. (19)
	Spirituality	An experience or feeling of being alive, purposeful, and fulfilled with the ability to make sense of life circumstances, beliefs about the universe, feelings of transcendence, joy, hopefulness, and love. (19)
	Stress	A complex experience felt internally that makes a person feel a loss or threat of loss—bodily or mental tension. (7)
	Mood	A sustained emotional state and how one feels subjectively. (19)
	Mood disorders	A group of mental disorders involving a disturbance of mood, accompanied by either a full or partial manic or depressive syndrome that is not due to any other mental disorder. Mood refers to a prolonged emotion that colors the whole psychic life; it generally involves either depression or elation such as manic episode, major depressive episode, bipolar disorders, and depressive disorder (see separate entries for each). (7)
	Violence	Communication or a behavior which threatens or demonstrates harm to self or others. (19)
<b>Nursing Domain</b>		
	Assessment	A holistic, systematic, and continuous collection, analysis, and synthesis of relevant data for the purpose of appraising the individual's health status. (19)

## Annie Taylor Dee School of Nursing Handbook 2021-2022

	Caring Interventions	Caring interventions are those nursing behaviors and actions that assist patients in meeting their needs. These interventions are based on a knowledge and understanding of the natural sciences, behavioral sciences, nursing theory, nursing research, and past nursing experiences. Caring is the “being with” and “doing for” that assist patients to achieve the desired results. Caring behaviors are nurturing, protective, compassionate, and person-centered. Caring creates an environment of hope and trust where patient choices related to cultural values, beliefs, and lifestyles are respected. (19)
	Clinical Decision-Making	“Interpretation or conclusion about a patient’s needs, concerns, or health problems, and/or the decision to take action (or not), use or modify standard approaches, or improvise new ones as deemed appropriate by the patient’s response.” (19)
	Clinical Judgement	“Clinical judgment is defined as the observed outcome of critical thinking and decision-making. It is an iterative process that uses nursing knowledge to observe and assess presenting situations, identify a prioritized client concern, and generate the best possible evidence-based solutions in order to deliver safe client care.” (30)
	Collaboration	"Function effectively within nursing and inter-professional teams, fostering open communication, mutual respect, and shared decision-making to achieve quality patient care." (7)
	Communication	The exchange of thoughts, messages, or information through verbal and nonverbal methods. (7)
	Critical Thinking	“A process that results in the interpretation, analysis, evaluation and explanation of evidence upon which a judgment is based.” (5)
	Learning	Learning is an enduring change in behavior, or in the capacity to behave in a given fashion, which results from practice or other forms of experience. (21)
	Patient-Centered Care	"Recognize the patient or designee as the source of control and full partner in providing compassionate and coordinated care based on respect for patient's preferences, values, and needs." (17)
	Pedagogy	Pedagogy is the art and science of teaching and includes multiple theories of behavior that are based on the learning process or the observation and scientific study of how people learn (p.72). (24)
	Professionalism	“The conduct, aims, or qualities that characterize or mark a profession.” (7)
	Role Transition	The process of developing a new role. (6)
	Safety	Preventing inadvertent pain, injury, or loss. (7)
	Self-Management of Care	The systematic provision of education and supportive interventions to increase patients’ skills and confidence in managing their own health problems, including regular assessment of progress and problems, goal-setting, and problem-solving approaches. (19)
	Teaching	Is deliberate interventions that involve sharing information and experiences to meet intended learner outcomes in the cognitive, affective and psychomotor domains according to an educational plan. Whether formal or informal, planned well in advance or spontaneous, teaching is deliberate and conscious acts with the objective of producing learning. (22)
	Theory	A set of interrelated concepts, definitions and propositions that present a systematic view of events or situations by specifying relations among variables, in order to explain and predict the events or situations (p. 26). (23)
<b>Healthcare Domain</b>		
	Advocacy	To speak up or act in the cause of another in support of individuals, families, systems, communities, and issues. (19)
	Care Management	A system of management that facilitates effective care delivery and outcomes for each patient. (2)
	Educator	The role of facilitating learning, facilitating learner development and socialization, using assessment and evaluation strategies, participating in curriculum design and evaluation of program outcomes, functioning as a change agents and leaders, pursuing continuous quality improvement in the

## Annie Taylor Dee School of Nursing Handbook 2021-2022

		nurse-educator role, engaging in scholarship, and functioning within the educational environment. (1)
	Emergency Preparedness	A continuous cycle of planning, organizing, training, equipping, exercising, evaluating, and taking corrective action in an effort to ensure effective coordination during incident response. (3)
	Ethics	A code or guide about the rightness or wrongness of behaviors. Ethical behaviors guide the nurse in supporting the principles of autonomy, beneficence, justice, and truth. (19)
	Evidence-Based Practice	A process to solve problems in practice using the best evidence, clinical experience, and patient preferences and values. (11)
	Genetics	The study of heredity and the transference of traits from parents to offspring. (9)
	Healthcare Systems	A group of interacting people and processes that deliver safe and effective patient care with quality, equal access, and cost-effectiveness. (10)
	Health Policy	Guidelines and protocols created and enforced by governing bodies or professional organizations that influence the actions and decisions of organizations and individuals within the healthcare system. (7)
	Health Promotion	The effort to stop the development of a disease, including treatment to prevent a disease from progressing further and causing complications. (7)
	Holism	The culture of human caring in nursing and healthcare that affirms the human person as the synergy of unique and complex attributes, values, and behaviors influenced by that individual's environment, social norms, cultural values, physical characteristics, experiences, religious beliefs and practices, and moral and ethical constructs, within the context of a wellness-illness continuum. (4)
	Informatics	An integration of nursing science, computer science, and information science to manage and communicate data, information, knowledge, and wisdom in nursing practice. (7)
	Innovation	Innovation is the spark of insight that leads a scientist or inventor to investigate an issue or phenomenon. That insight is usually shaped by an observation of what appears to be true or the creative jolt of a new idea. Innovation is driven by a commitment to excellence and continuous improvement. Innovation is based on curiosity, the willingness to take risks, and experimenting to test assumptions. Innovation is based on questioning and challenging the status quo. It is also based on recognizing opportunity and taking advantage of it. (25)
	Leadership	An interactive process whereby an individual inspires a group of people to attain a common goal. (15)
	Legal/Regulatory Management	Governing or directing according to a rule or bringing under the control of an authority. (12)
	Philosophy	The process of getting things done effectively with and through other people. (18)
	Population Health	A statement encompassing ontological claims about the phenomena of central interest to a discipline, epistemic claims about how those phenomena come to be known, and ethical claims about what the members of a discipline value (pp.11-12). (28)
	Quality Improvement	“An approach that focuses on interrelated conditions and factors that influence the health of populations over the life course, identifies systematic variations in their patterns of occurrence, and applies the resulting knowledge to develop and implement policies and actions to improve the health and well-being of those populations.” (8)
	Research	An organized approach to identify errors and hazards in care, as well as improve care overall. (19)
	Social Determinants of Health	Investigation or experimentation aimed at the discovery and interpretation of facts about a particular subject. (6)
		Conditions in the environments in which people are born, live, learn, work, play, worship, and age that affect a wide range of health, functioning, and quality-of-life outcomes and risks (31)

	Socialization	The passing of a role from one person to the next, the process by which a person acquires and internalizes new knowledge and skills. The socialization period involves the learning of work systems, staff roles, and employer expectations for students employees and new employees alike. (26)
	Social Justice	Acting in accordance with fair treatment regardless of economic status, race, ethnicity, age, citizenship, disability, or sexual orientation. (29)

References

- Bastable, S. B. (2013). *Nurse as educator* (4<sup>th</sup> ed.). Sudbury, Jones and Bartlett.
- Care Management Society of America. (n.d.) <http://www.cmsa.org/PolicyMaker/tabid/62/Default.aspx>
- Department of Homeland Security. (2015). <http://www.dhs.gov/>
- Eliopoulos, C. (2014). *Gerontological nursing* (8<sup>th</sup> ed.). Philadelphia, Wolters Kluwer Lippincott Williams & Wilkins.
- Facione, P. (1990). Critical thinking: A statement of expert consensus for purposes of educational assessment and instruction. <https://eric.ed.gov/?id=ED315423>
- Finkleman, A., & Kenner, C. (2014). *Professional nursing concepts: Competencies for quality leadership*. (3<sup>rd</sup>). Jones and Bartlett Learning.
- Giddens, J. F. (2013). *Concepts for nursing practice*. Elsevier
- Kindig, D., & Stoddard, G. (2003). What is population health? *American Journal of Public Health, 93*(3), 380-383. <http://www.ncbi.nlm.nih.gov/pubmed/12604476>
- Hinkle, J. L., & Cheever, K. H. (2014). *Brunner & Suddarth's textbook of medical-surgical nursing* (13<sup>th</sup> ed., Vol. 2). Wolters Kluwer Lippincott Williams & Wilkins.
- Mason, D. J., Leavitt, J. K., & Chaffee, M. W. (2012). *Policy & politics in nursing and health care* (6<sup>th</sup> ed.) Elsevier Saunders.
- Melnyk, B. M., & Fineout-Overholt, E. (2011). *Evidence-based practice in nursing & healthcare: A guide to best practice* (2<sup>nd</sup> ed.). Lippincott William & Wilkins.
- Milstead, J. A. (2016). *Health policy and politics: A nurse's guide*. Jones and Bartlett Learning.
- National League for Nursing. (2010). Core competencies of nurse educators with task statements. [www.nln.org/facultyprograms/pdf/corecompetencies.pdf](http://www.nln.org/facultyprograms/pdf/corecompetencies.pdf)
- National League for Nursing. (n.d.). *Core values*. <http://www.nln.org/about/core-values>
- Northouse, P.G. (2016). *Leadership: Theory and practice* (6<sup>th</sup> ed.). Sage.
- Pender, N.J., Murdaugh, C. L., & Parsons, M. A. (2014). *Health promotion in nursing practice* (7<sup>th</sup> ed.). Pearson.
- Quality and Safety Education for Nurses. (2014). *Prelicensure KSAS*. [http://qsen.org/competencies/pre-licensure-ksas/#patient-centered\\_care](http://qsen.org/competencies/pre-licensure-ksas/#patient-centered_care)
- Robbins, S. P., Decenzo, D. A., & Coulter, M. (2013). *Fundamentals of management: Essential concepts and applications* (9<sup>th</sup> ed.) Pearson.
- Trakalo, K., Horowitz, L.S., & McCulloch, A.R. (Eds.). (2015) *Nursing: A concept-based approach to learning* (2<sup>nd</sup> ed.) (Vols. I, II, III). Pearson Prentice Hall.
- Videbeck, S. L. (2011). *Psychiatric-mental health nursing* (5<sup>th</sup> ed.). Lippincott Williams & Wilkins.
- Shunk, D.H. (2012). *Learning theories: An educational perspective*. Pearson.
- Carpenter, J.A., & Bell, S. K. (2002). What do nurses know about teaching patients? *Journal for Staff Development, 18*(3), 157-161.
- Glanz, K., Rimer, B.K., & Viswanath, K. (2008). *Health behavior and health education: Theory, research, and practice* (4<sup>th</sup> ed.). Josey-Bass.
- Oreman, M.H. (2015). *Teaching in nursing and role of the educator*. Springer.
- US Department of Education. (2017) [www2.ed.gov/about/offices/list/oii/about\\_definition.html](http://www2.ed.gov/about/offices/list/oii/about_definition.html)
- Santucci, J. (2004). Facilitating the transition into nursing practice: Concepts and strategies for mentoring new graduates. *Journal for Nurses in Staff Development, 20*(6), 274-284.
- Page, N. & Czuba, C.E. (1999). Empowerment: What is it? *Journal of Extension, 37*(5).
- Fawcett. (2005). The structure of contemporary nursing knowledge. In *Contemporary nursing knowledge: Analysis and evaluation of nursing models and theories*. (2<sup>nd</sup> ed., pp.1-48). Davis.
- American Association of Colleges of Nursing. (2008). *The essentials of baccalaureate education for professional nursing practice* [PDF]. Retrieved from <https://www.aacnnursing.org/Portals/42/Publications/BaccEssentials08.pdf>



## Annie Taylor Dee School of Nursing Handbook 2021-2022

30. Alforque-Tan, R. J. (n.d.). Enhancing quality of care and client safety: The role of nursing clinical-judgment in public safety. National Council of State Boards of Nursing [Slides].  
[https://sigma.nursingrepository.org/bitstream/handle/10755/623112/Combined\\_Slides\\_s23644.pdf;jsessionid=66F9A408F795B8D9BAC2812479CCAD74?sequence=8](https://sigma.nursingrepository.org/bitstream/handle/10755/623112/Combined_Slides_s23644.pdf;jsessionid=66F9A408F795B8D9BAC2812479CCAD74?sequence=8)
31. Office of Disease Prevention and Health Promotion. (2014). Social determinants of health.  
<https://www.healthypeople.gov/2020/topics-objectives/topic/social-determinants-of-health>

**Weber State University**  
**Dumke College of Health Professions**  
**Annie Taylor Dee School of Nursing**

**Handbook Part B**  
**Annie Taylor Dee School of Nursing**  
**General Policies and Procedures**

## Section I: Annie Taylor Dee SON Requirements

### I. General Guidelines for all Annie Taylor Dee SON Students

#### A. Weber State University Policies

1. [Discrimination and Harassment Policy \(PPM 3-32\)](http://www.weber.edu/studentaffairs):  
(<http://www.weber.edu/studentaffairs>)
2. Disability Statement  
Any student requiring accommodations or services due to a disability must contact Services for Students with Disabilities (SSD) in Room 181 of the Student Services Center (or Room 256, Bldg. 2 at the Davis Campus). SSD can also arrange to provide course materials in alternative formats upon request. Contact SSD by phone at 801-626-6413 (Ogden Campus) or 801-395-3442 (Davis Campus); or by email at [ssd@weber.edu](mailto:ssd@weber.edu)
3. We do not have the ability to ensure a Latex-free environment.
  - Latex products are used in our laboratory, simulation, and clinical environments.

**B.** Students must pay required tuition and fees by the dates outlined in the WSU Catalog.  
NOTE: Failure to meet these established deadlines may result in the student losing his/her place in a specific nursing course/program.

**C.** Students MAY NOT register for courses scheduled to be taught on a campus different from the campus to which they were formally accepted. Students with extenuating circumstances may request a change in campus. Permission is granted by program director and *depends* on space availability, etc.

**D.** Students are covered by WSU liability/malpractice insurance once they are registered in a course.  
NOTE: Students may not attend/participate in any nursing courses prior to being admitted to WSU and registering for their nursing courses.

**E.** WSU Annie Taylor Dee SON dates and deadlines override Continuing Education, online, or other university guidelines.  
NOTE: Prerequisites and/or support courses must be completed and the grades posted two (2) weeks prior to the start of the semester.

**F.** Students will have access to the syllabi in the online learning-management system and Student Handbook prior to first day of class.

**G.** Both the WSU and the Annie Taylor Dee SON expect that students study two (2) – four (4) hours per week for each credit hour of enrolled courses

### VII. II. Essential Requirements for Student Success

The WSU Annie Taylor Dee SON Essential Requirements act as a guide for students and faculty to understand and communicate the functions required for the nursing student. Students are required to meet all of these essential requirements.

These requirements include functions necessary for starting, continuing and graduating from WSU Annie Taylor Dee SON programs. \*These requirements are applicable to all courses, including Study Abroad electives.

If for any reason during the course of the specific program (AAS /AS, RN-BSN, MSN, FNP-DNP, DNP), the student is unable to perform any of these functions, they will be required to meet with the faculty and program director, which may delay program progression. (See Handbook Part B, Section V. B.)

After reading and reviewing the essential requirements, the student must sign and return an Essential Requirements form to the WSU Annie Taylor Dee SON before starting the program of study. The form is a permanent part of the WSU Annie Taylor Dee SON student file.

#### **A. Essential Requirements of Intellect**

1. **Comparing:** Judging observable functional, structural, or compositional characteristics (whether similar to or divergent from obvious standards) of data, people, or things.
2. **Copying:** Transcribing, entering, or posting data.
3. **Computing:** Performing arithmetic operations and reporting on and/or carrying out a prescribed action.
4. **Compiling:** Gathering, collating, or classifying information about data, people, or things; including reporting and/or carrying out a prescribed action relevant to the evaluation.
5. **Analyzing:** Examining and evaluating data and presentation of alternative actions in relation to the evaluation.
6. **Coordinating:** Determining time, place and sequence of operations or action to be taken on the basis or analysis of data. May include prioritizing multiple responsibilities and/or accomplishing the responsibilities simultaneously.
7. **Judgment:** Recognizing potentially hazardous materials, equipment, and situations; and proceeding safely in order to minimize risk of injury to patients, self, and nearby individuals.
8. **Synthesizing:** Combining or integrating data to discover facts and/or develop knowledge, creative concepts, and/or interpretations.
9. **Negotiating:** Exchanging ideas, information, and opinions with others to formulate policies and programs; and/or jointly arrive at decided conclusions and/or solutions.
10. **Adaptability:** Ability to be flexible, creative, and adapt to professional and technical changes; the use of time and systematizing actions in order to complete professional and technical tasks within realistic constraints; and providing professional and technical services while experiencing the stresses of task-related uncertainty (e.g., receiving ambiguous directions, being assigned to an ambivalent preceptor), emergent demands (e.g., receiving “stat” test orders), and a distracting environment (e.g., experiencing high noise levels, crowding, complex visual stimuli).

#### **B. Essential Requirements of Observations**

1. **Near Acuity:** Clarity of vision at 20 inches or less with or without correction.
2. **Far Acuity:** Clarity of vision at 20 feet or more with or without correction.
3. **Depth Perception:** Ability to see depth and breadth: Three-dimensional vision.
4. **Color Vision:** Ability to identify and distinguish colors.
5. **Field of Vision:** Ability to see area from right-to-left or up-and-down while fixed on a singular point.
6. **Fine motor skills:** Picking, pinching, or otherwise working primarily with the fingers rather than with the entire hand or arm (e.g., as in “handling”).
7. **Feeling:** Perceiving attributes of objects (such as size, shape, temperature, or texture) by touching an object with the body’s skin, particularly using the skin of fingertips.
8. **Hearing:** Perceiving the nature of sounds, particularly when making fine discriminations in sounds (e.g., such as when making fine adjustments on running engines).

#### **C. Essential Requirements of Communication**

1. **Talking:** Expressing or exchanging ideas by means of the spoken word. Talking is important for those activities in which nursing students must impart oral information to patients or to the public; and in those activities in which students convey detailed or important spoken instructions accurately, loudly, or quickly to other workers.
2. **Hearing:** Perceiving the nature of sounds, particularly used in activities the ability to receive detailed information through oral communications and making fine discriminations in sounds.
3. **Communicating:** Talking with and/or listening to and/or signaling people to convey or exchange information, including giving/receiving assignments and/or directions.
4. **Instructing:** Teaching subject matter to others or training others through explanation, demonstration, and supervised practice; or making recommendations on the basis of technical nursing-specific knowledge.
5. **Interpersonal:** Relating to skills/behaviors used when dealing with individuals who have a range of moods and behaviors; and relating in a tactful, congenial, and personal manner so as not to alienate or antagonize those individuals.
6. **Confidentiality:** Promoting, advocating for, and striving “to protect the health, safety, and rights of the patient” (ANA Code of Ethics, Provision 3, 2010) as a nursing student, including keeping information gathered in practice or clinical-learning environments (e.g., individual patient information, information from clinical facilities, fellow student information) as undisclosed in the nursing student’s personal and professional writings, social media, and general communications with others.

#### **D. Essential Requirements of Movement**

1. **Standing**
2. **Walking**
3. **Sitting**
4. **Climbing:** Body agility is emphasized. May be required to ascend or descend something such as a fire escape using feet and legs and/or hands and arms.
5. **Balancing:** Maintaining body equilibrium to prevent falling when performing feats of agility such as assisting with the transfer of patients.
6. **Squatting:** Bending body downward and forward, requiring the full use of the lower extremities and back muscles.
7. **Kneeling:** Bending legs at knees and coming to rest on the knee or knees.
8. **Crouching:** Bending downward and forward by bending legs and spine.
9. **Crawling:** Moving about on hands and knees or hands and feet.
10. **Reaching:** Extending hand(s) and arm(s) in any direction.
11. **Handling:** Seizing, holding, grasping, turning, or otherwise working with the hand or hands.
12. **Physical Restraint:** Seizing, holding, restraining, and/or otherwise subduing violent, assaultive, or physically-threatening persons to defend oneself or prevent injury.
13. **Able to lift/ transfer/ move-up to 50 pounds independently.**
14. **Able to lift and move 51 to 100 pounds with assistance of another person or by using mechanical lifting and moving devices.**
15. **Mechanical Ability:** Able to safely and accurately operate mechanical or powered medical equipment and moving and transferring equipment.

#### **E. Essential Requirements Related to the Learning Environment**

1. **Exposure to Extreme Weather:** Students are expected to travel to the assigned clinical site, which may involve exposure to hot, cold, wet, humid, or windy conditions caused by the weather.
2. **Extreme Heat and/or Cold Non-Weather-related:** In the clinical setting the temperature of the care environment may be adjusted for patient treatment and students

would be expected to follow facility policy for appropriate dress and behavior if assigned to these areas.

3. **Wet and/or Humid:** Contact with water or other liquids or exposure to non-weather-related humid conditions.
4. **Atmospheric Conditions:** Exposure to conditions such as noxious odors (e.g., patient-care products, body odors, some dust, powders, mists).
5. **Hazards:** Students may be exposed to situations with a definite risk of bodily injury, such as proximity to moving mechanical parts, electrical current, radiation, and chemicals.
6. **Confined/Restricted Working Environment:** Clinical work is often performed in small patient-care areas. Some patient-care units or nursing facilities are closed or locked providing safety and security for patients or fellow workers.
7. **Noise:** Able to function safely and professionally in a noisy and distracting environment.

*Satisfactory completion of the Annie Taylor Dee SON Programs demands the nursing student's ability to meet the above requirements. If a student is uncertain as to his/her ability to comply with any of these essential functions, please consult with the Annie Taylor Dee SON Admissions and Advancements Committee.*

## II. Program Technology Requirements

- A. Technology requirements are important for your success. You must have the following:
  - A computer, with either PC (Windows) or Macintosh systems. A consideration for the MSNP program is access to a laptop or tablet that you can bring to class.
  - Internet access (high-speed preferred)
  - Webcam (for video conferencing and presentations)
  - WSU multimedia is **optimized by Google Chrome browser**; thus other browsers may not/do not work as well.
- B. Other considerations:
  - Intel i5 processor or faster
  - at least 4GB RAM
  - 500GB HD
  - Monitor that supports 1280x1024 resolution or higher

## III. Student Academic Advisement

- A. Each student is assigned a WSU Annie Taylor Dee SON academic advisor upon entering the nursing program. See individual program Part C of the Student Handbook for advisement process.

## VIII. IV. Student Documentation

- A. A confidential, cumulative record (file) is kept on each student.
  1. Records of individual student conferences, warnings, disciplinary actions, and other relevant documents will be maintained in the student's confidential cumulative record.
    - These documents will be read and signed by the student and faculty prior to each record becoming a part of the student's cumulative record.
    - Student signature does not establish agreement with information recorded on the form; but does indicate that the student has read and understands information, conditions of warning and/or discipline, and department response if conditions related to warning and/or disciplinary action is/are not fulfilled by student.
  2. Students seeking access to the confidential, cumulative file are referred to the student

records section of the WSU Student Code and the Family Educational Rights and Privacy Act (FERPA) of 1974. Further information can be obtained from the office of the Registrar’s Office.

- B.** WSU Annie Taylor Dee SON partners with a secure documentation management system to provide students an easy process for maintenance and compliance of student documentation. Once the requirements have been fulfilled, the results will be submitted to the WSU Annie Taylor Dee SON. Students are responsible for the associated cost. The package includes:
1. Drug Testing
  2. Criminal Background Check
    - Nationwide Healthcare Fraud and Abuse
    - Nationwide Patriot Act
    - Nationwide Record Indicator with Sex Offender Investigation
    - Social Security Alert
    - Residency History
  3. Document Manager
  4. Immunizations
    - The WSU Annie Taylor Dee SON prepares students to proactively participate in evidence based practice. In support of that endeavor the WSU Annie Taylor Dee SON follows the current Center for Disease Control and Prevention (CDC) guidelines for immunizations for health care providers. All students are required to comply with CDC requirements for healthcare personnel. The hepatitis B vaccination and titer requirements (along with all other vaccination and titer requirements) reflect current CDC guidelines and will not be altered regardless of employer or practitioner recommendations. All immunization documentation must be uploaded to CastleBranch.
    - Besides mandatory immunizations, American Heart Association BLS for Healthcare Provider CPR.
    - Students will be prompted to upload specific documents required by the WSU Annie Taylor Dee SON.

**Mandatory Clinical Immunization Requirements**

Immunization	Documentation / Steps
<p><b>HEPATITIS B</b> Students must comply with one (1) of the following Hepatitis B requirements</p>	<p>1. <b>Documentation of a CDC-approved HepB immunization series, followed by a positive titer.</b></p> <p>The following are CDC-approved HepB series</p> <p><b>Option #1:</b> Engerix-B or Recombivax HB (3 doses)</p> <ul style="list-style-type: none"> <li>○ HepB#1-series start date</li> <li>○ HepB#2-one (1) month later</li> <li>○ HepB#3-five (5) months later</li> <li>○ Titer- one (1) to two (2) months after 3<sup>rd</sup> dose</li> </ul> <p><b>Option #2:</b> Heplisav-B (2 doses)</p> <ul style="list-style-type: none"> <li>○ HepB#1- series start date</li> <li>○ HepB#2- one (1) month later</li> <li>○ Titer – one (1)- two (2) months after 2<sup>nd</sup> dose</li> </ul> <p><b>PLEASE NOTE: Documentation of a positive titer without documentation of immunization series will require a full repeated immunization series followed by another positive titer.</b></p>

	<ol style="list-style-type: none"> <li>2. Documentation of a CDC-approved HepB series and a negative titer (must be uploaded together) <ul style="list-style-type: none"> <li>○ HepB booster immediate</li> <li>○ Repeat titer six (6) weeks after booster</li> <li>○ If titer is again negative, complete the rest of the HepB series: <ul style="list-style-type: none"> <li>○ HepB#2 immediate</li> <li>○ HepB#3 (five (5) months after HepB#2</li> <li>○ Repeat titer six (6) weeks after HepB#3</li> </ul> </li> </ul> </li> <li>3. No titer, series in progress: <ul style="list-style-type: none"> <li>○ HepB#1 immediate</li> <li>○ HepB#2 – one (1) month later</li> <li>○ HepB#3 – five (5) months later</li> <li>○ Repeat titer – six (6) weeks after HepB#3</li> </ul> </li> <li>4. For #4 when initial series in progress, if the titer comes back negative, follow steps for #3.</li> <li>5. A non-responder is a person who has obtained two (2) HepB immunization series, each followed by a negative titer.</li> </ol>
<p>TB or QUANTIFERON Nursing students are required to test upon admission to the Annie Taylor Dee SON.</p> <p>Annual or serial TST for TB is determined by state regulations and risk for TB exposure. Utah is a low risk state.</p> <p>The CDC recommends healthcare workers and healthcare students receive a baseline TST - TB test.</p> <p>The TST – TB test should be repeated if a TB exposure occurs, if there is international travel with endemic TB, or if the state of Utah risk changes to medium.</p>	<p>Students are required to obtain either a baseline 2-step TB (TST) test, Quantiferon or T-Spot TB blood draw.</p> <p><b>Baseline 2-step TB (TST)</b></p> <ol style="list-style-type: none"> <li>1. PPD – TST cannot be completed earlier than 4 months prior to school start</li> </ol> <p>Step One:</p> <ul style="list-style-type: none"> <li>○ The PPD - TST #1 is reviewed 48 to 72 hours after placement</li> <li>○ Document TST #1 result (negative or positive)</li> </ul> <p>Step Two - proceed if negative Step One</p> <ul style="list-style-type: none"> <li>○ Administer second TST one (1) to three (3) weeks after TST #1 placement</li> <li>○ The PPD - TST #2 is reviewed 48 to 72 hours after placement</li> <li>○ Document TST #2 result (negative or positive)</li> </ul> <p>If you have proof of a 2-step TB within the past year, then an annual TB test must be done</p> <p>Upload all results to Castlebranch at the same time</p> <p><b>Quantiferon or T-Spot TB serum test</b></p> <ul style="list-style-type: none"> <li>○ If you choose the Quantiferon or T-Spot TB blood draw it must be within the past year.</li> <li>○ If over 1 year, repeat Quantiferon or TSpot or obtain annual TB skin test</li> <li>○ Upload the Quantiferon TB blood draw results to CastleBranch</li> </ul> <p><b>Positive TB test</b></p> <ul style="list-style-type: none"> <li>● If you have had a prior positive TB test, you must provide the results of your X-ray.</li> <li>● Upload the chest x-ray results to CastleBranch</li> </ul> <p><b>International travel or previous international residence</b></p> <ul style="list-style-type: none"> <li>● If you've traveled or lived internationally and had to have a BCG (within the past 10 years), you must show proof of BCG.</li> <li>● Obtain and/or provide the results of your X-ray</li> </ul>
<p><b>Measles, Mumps, &amp;</b></p>	<p>MMR titer or two (2) MMR vaccinations required</p>



<b>Rubella (MMR)</b>	<ul style="list-style-type: none"> <li>○ If two (2) documented doses of MMR and blood test results are negative or equivocal for measles, mumps, and/or rubella, they should be considered to have presumptive evidence of immunity to measles, mumps, and/or rubella and are not in need of additional MMR doses unless instructed by the healthcare provider.</li> </ul>
<b>TDAP</b>	<ul style="list-style-type: none"> <li>○ Documented proof of Tdap within the last 10 years</li> <li>○ If over 10 years, obtain a new Tdap</li> </ul>
<b>VARICELLA</b>	<ul style="list-style-type: none"> <li>○ Varicella titer or two (2) varicella vaccinations.</li> <li>○ You CANNOT self-report or obtain a doctor's note stating you had chicken pox.</li> </ul>
<b>FLU SHOT</b>	<ul style="list-style-type: none"> <li>○ Flu shot is obtained during the current flu season when available (September through October).</li> </ul>
<b>IMMUNIZATION ALLERGIES/ISSUES I</b>	<ul style="list-style-type: none"> <li>○ Any allergies or issues with immunizations, require current written notification from your healthcare provider.</li> <li>○ Upload the written notification of immunization allergy or issues to CastleBranch</li> </ul>

## V. Policies that Apply to Students in Programs Requiring Clinical Assignment

### A. Federal Occupational Safety and Health Administration (OSHA)

1. OSHA Regulations:
  - a. Students may, in the fulfillment of program-required clinical practice, be exposed to bloodborne pathogens. Use of standard precautions (current with CDC guidelines) is a requirement for practice and expected of all students in the clinical setting.
  - b. All students are required to comply with OSHA regulations and follow the [WSU Blood borne Pathogen Exposure Control Plan](http://www.weber.edu/EHS/postexposure.html) (<http://www.weber.edu/EHS/postexposure.html>).
  - c. Students who are have allergies that may affect their experience in the selected program of study need to notify the WSU Disability Office.

### B. Functional Limitation or Injury

1. A student who is functionally limited must notify appropriate nursing faculty and administration as soon as possible. The student and appropriate faculty will meet with the program director to develop guidelines delineating the student's plan to complete course requirements pre- and post-limitation. Student must provide a healthcare provider communication that clears them for both pre- and post-limitation. (i.e., non-elective surgery, pregnancy, etc.)
    - Students choosing to have elective surgeries during the program of study do not meet these criteria.
    - Facilities retain the right to determine essential requirements of students for clinical rotations. This may affect program progression. (i.e. refusal of student in clinical facility)
- See SECTION I, Part II: Essential Requirements for Student Success.

### C. Health

1. WSU Annie Taylor Dee SON does not accept responsibility for injury or illness that occurs while the student is enrolled in a WSU nursing program. WSU does not offer health insurance.
  - a. Students are advised to be enrolled in a personal health-insurance plan.
  - b. Students are considered interns (guests) while in clinical settings. As such, students are "volunteer workers" of the sponsoring institution of higher education (WSU) and are

- eligible to receive Workers' Compensation benefits for bloodborne pathogen exposures acquired during clinical time.
- c. Should a student be injured during a clinical experience or have his/her health endangered (such as an exposure to bloodborne pathogens), the student should report the situation immediately to the student's instructor and to the appropriate cooperating clinical facility/agency personnel.
    - The appropriate incident report(s) will need to be filed.
    - Students are responsible for any expenses not covered by Workers' Compensation due to injury or illness in the college or clinical area.
  - d. A student missing a class/lab/clinical experience for any health-related issue may be required to submit a release from their healthcare provider prior to attending further class/lab/clinical experiences.

#### **D. Criminal Background Check**

1. Purpose
  - a. The criminal background check screening process has been mandated by the WSU Annie Taylor Dee SON in an effort to more effectively protect the safety and well-being of patients, clients, and residents of those facilities; and is fully supported by the DCHP Executive Committee, the nursing faculty, and the WSU Annie Taylor Dee SON's Advisory Committees.
  - b. The WSU Annie Taylor Dee SON enters into Affiliation Agreements with multiple healthcare facilities throughout the state. These agreements provide WSU Annie Taylor Dee SON students and faculty authorized access to facility resources and patients. In response to stipulations contained within one or more of these Agreements, the WSU Annie Taylor Dee SON requires that students admitted to a nursing program submit to a national criminal background check.
2. Policy

Admission and progression in a WSU Annie Taylor Dee SON Program is contingent upon submission of a satisfactory background check. If the background check reveals a history of criminal actions, the student may not be admitted to or allowed to progress within the nursing program. The student will not be entitled to any refunds of tuition dollars or other fees. In addition, each student is required to attest, each semester, that their original background check is valid.

When a student interrupts their progression in any nursing program of study that requires clinical assignment or the student is not continuously registered, then the student must repeat and pass the national criminal background check prior to enrolling in any nursing courses.

3. Procedures

All students who wish to apply for admission to a WSU Annie Taylor Dee SON program are informed in writing on the application that they are required to submit to a national criminal background check.

  - a. The following written statements, as well as instructions for obtaining the criminal background check, are found in both the admission and acceptance packets:
    - *“If the record reveals prior criminal convictions, it may affect eligibility to begin and/or remain in a nursing program. Actions which would preclude an individual from admission to or continuance in a nursing program include: aggravated assault, intimate-partner or child abuse, sexual predatory behavior, financially-related crimes such as identity theft, and issue of moral turpitude (reference Utah Department of Professional Licensing). This list is not*

*inclusive of all criminal convictions that will prevent program admission and/or progression, and the WSU Annie Taylor Dee SON reserves the right to review each student's record on an individual basis."*

- b. If background check documents criminal actions, it may be required of the student to obtain official verification that the charge(s) have been expunged.
- c. Disclaimer included in the admission packet states: *"Students are encouraged to have their criminal record expunged prior to seeking criminal background check."*
- d. Persons convicted of felonies must refer to the Utah Nurse Practice Act (Utah Code-Title 58: Occupations and Professions, Chapter 31b: Nurse Practice Act, Section 302: Qualifications for licensure or certification, which can be found at <http://le.utah.gov/>) and may not be allowed to enter/progress in any of the Nursing programs.
- e. If a student's criminal background check reveals evidence of prior convictions, the criminal background check will be reviewed on a case-by-case basis by the Admission and Advancement Committee to determine if the student will be allowed to enter/progress in any of the nursing programs.
- f. A student who has committed a felony and successfully petitioned to reduce the conviction to a misdemeanor charge will be reviewed on a case-by-case basis by the Admission and Advancement Committee to determine if the student will be allowed to enter/progress in a nursing program.
- g. A student already progressing in a nursing program is required to report any pending criminal charge(s) at the time that any charge occurs (this reporting includes throughout the entirety of the student's nursing educational program).
- h. The WSU Annie Taylor Dee SON reserves the right to require a student with a pending criminal charge to withdraw from all nursing classes until the courts have made a decision regarding the criminal actions.
- i. If criminal charge(s) are dismissed, a student may be considered for reentry.
- j. If the courts determine that the charges are valid and a conviction is made, either misdemeanor or felony, a student's criminal background check will be reviewed on a case-by-case basis.
- k. Information obtained in the criminal background check will be disclosed on a need-to-know basis to instructors and administrators.

## **E. Drug Screen**

1. Purpose
  - a. The drug-screening process has been mandated by the WSU Annie Taylor Dee SON in an effort to more effectively protect the safety and well-being of the patients, clients, and residents of those facilities; and is fully supported by the DCHP Executive Committee, the nursing faculty, and the WSU Annie Taylor Dee SON's Advisory Committees.
  - b. The WSU Annie Taylor Dee SON enters into Affiliation Agreements with multiple healthcare facilities throughout the state. These agreements provide WSU Annie Taylor Dee SON students and faculty authorized access to facility resources and patients. In response to stipulations contained within one or more of these Agreements, the WSU Annie Taylor Dee SON requires students admitted to a nursing program to submit to a urine drug screen analysis for the presence of mind-altering substance(s).
2. Policy

Admission and progression in a WSU Annie Taylor Dee SON program is contingent upon submission of a urine drug-screen analysis. If the urine drug screen reveals any substances (prescribed or non-prescribed), the student may not be admitted to or allowed to progress within the nursing program. The student will not be entitled to any refunds of tuition dollars or other fees. Each student is required to sign the BCI/Drug Test recertification form each semester.

When a student interrupts their progression in any nursing program of study that requires clinical assignment or the student is not continuously registered, then the student must repeat and pass the drug screening prior to enrolling in any nursing courses.

3. Procedure

All students who wish to apply for admission to WSU Annie Taylor Dee SON program are informed in writing that they are required to submit to, and pass, a urine drug screen (takes place after admissions).

- a. The following written information and instructions are found in ~~the~~ both the admission and acceptance packets:
  - *"If drug test reveals the presence of controlled substances (prescribed or non-prescribed), it may affect eligibility to enter as and/or remain a student in a WSU Annie Taylor Dee SON program."*
- b. Students are provided instructions for obtaining the urine drug screen at an approved testing facility.
- c. If a student's results return indicating a "dilute" sample, testing must be repeated at the student's expense.
- d. A second "dilute" test result will be interpreted as a positive screen, and the student may not be allowed to enter and/or continue in the nursing program.
- e. A student who refuses to submit to the urine drug screen or who does not have the screening performed by the date indicated on the admission form may forfeit his/her position in the nursing program.
- f. Positive drug screen results are automatically sent to a Medical Review Officer (MRO) for further evaluation and clearance. Failure to proceed with the MRO process or not providing the information requested by the MRO may result in dismissal from the nursing program.
- g. The WSU Annie Taylor Dee SON reserves the right to ask any student to submit to additional drug testing. This request will occur if a student appears to be impaired, intoxicated or under the influence of drugs, narcotics, or chemicals. Nursing faculty or instructor, in consultation with program administrators and/or additional healthcare professionals, are authorized to make this determination. If it is determined that a student is impaired, the student will be required to leave the classroom, lab, or clinical setting in order to avoid a potential threat or risk to public health, safety, or welfare. Students may not be readmitted to the classroom, lab, or clinical setting until results of the drug screen are reviewed. Arrangements will be made to ensure the safety of the impaired student. The cost of additional drug screens will be the responsibility of the student.
- h. A student who wishes to file a grievance in response to the WSU Annie Taylor Dee SON's decision based on the results of the drug screen is referred to WSU Policy Section 6-23 thru 33: Student Due Process Policy and Procedures.

## **Section II: Academic Standards and WSU Annie Taylor Dee SON Response to Violation of Academic Integrity Policy**

### **I. General Guidelines of Academic Standards and Violations**

- A. The WSU Annie Taylor Dee SON has strict policies applying to any violation of the academic integrity policy in any form; any violation may be subject to an appropriate sanction or penalty. Academic-integrity violations at WSU Annie Taylor Dee SON are classified into two levels called **nonseparable** and **separable**. Nonseparable violations are less severe violations for which the possible sanctions do not include suspension or expulsion from the WSU Annie

Taylor Dee SON; separable violations are more severe violations for which the possible sanctions include suspension or expulsion. Whether a given violation is classified as nonseparable or separable depends on a number of factors including: the nature and importance of the academic exercise; the degree of premeditation or planning; the extent of dishonest or malicious intent; the academic experience of the student; and whether the violation is a first-time or repeat offense.

- B.** WSU Student Code and the WSU Annie Taylor Dee SON have a no-tolerance policy for cheating.
- C.** Students are expected to conduct themselves in a manner free from any suspicion of dishonesty or cheating.

**D. Plagiarism**

1. The WSU Annie Taylor Dee SON has a no-tolerance plagiarism policy. All student work is expected to be referenced correctly.
2. When using the WSU SON internet-based plagiarism tool, a students' paper resulting in 21% or greater amount of plagiarism will result in one of the following two actions:
  - a. Based on course/assignment details, the student may take the opportunity to read the plagiarism report and rewrite the assignment in order to lower the plagiarism percentage; or
  - b. Based on results of the internet-based plagiarism tool, faculty or instructor may proceed with the Academic Integrity Policy on violations and sanctions.

**E. Online Netiquette Guidelines**

During online discussions or emails students are expected to observe the rules of "online netiquette" as follows:

- Whenever posting a message to discussion boards, chat rooms, or e-mail, use only professional language. Profanity or reference to inappropriate visual material is not considered professional or appropriate
- Verbal attacks and or threatening references to other students and or faculty via e-mail, discussion boards, chat rooms or social media is unacceptable
- Use humor with extreme caution. Without face-to-face communications, your joke(s) may be viewed as an attack or criticism
- Use of the course websites for solicitation, promotion of businesses or products, posting of offensive messages or jokes, and other activities unrelated to the course are prohibited

Violation of netiquette guidelines will be discussed with the student at the discretion of the instructor and may result in a verbal and or written warning. Continuation of problematic online etiquette by the student may result in probation and or subsequent dismissal from the program.

## II. Academic Standards

**A. Grading Scale**

1. The following grading scale is used by the WSU Annie Taylor Dee SON:

100-95% = A	89-87% = B+	79-77% = C+	69-67% = D+	59% and below = E
94-90% = A-	86-83% = B	76-73% = C	66-63% = D	
	82-80% = B-	72-70% = C-	62-60% = D-	

2. Students must have an 80% (B-) or higher in order to pass any nursing course and continue in the nursing program.
3. **Students must pass all prerequisite and support courses with a letter grade of “C” or better.**
4. A student must achieve at least an 80% average score on the combined unit-exam and final-exam test scores. Failure to achieve an average examination score of 80% or higher in a course at the conclusion of the semester will result in a failing course grade. (program specific)

#### **B. Rounding**

1. Any grade below an 80% (e.g., 79.5%) will not be rounded.
2. All other grades will be rounded at 0.5 (e.g., 94.5% can be rounded to an A).

#### **C. Evaluation Incentive**

1. Each semester, course and faculty evaluations will be available online in Chi Tester. Any student who completes both the course and faculty evaluations for a given nursing course will receive a 1% completion incentive that will be added to the student’s final grade for that course. Any student who is at a failing grade at the end of the course will not be allowed the 1% evaluation incentive.

### **IX. III. Levels of Violations and Sanctions**

#### **A. Nonseparable Violations**

1. Nonseparable violations are less-serious violations of academic integrity. They may occur because of inexperience or lack of understanding of the principles of academic integrity and are often characterized by a relatively low degree of premeditation or planning and the absence of malicious intent on the part of the student committing the violation. These violations are generally quite limited in extent, occur on a minor assignment or quiz, or constitute a small portion of a major assignment and/or represent a small percentage of the total course work.
2. Below are a few examples of violations that are most often considered to be nonseparable violations, at least when committed by an undergraduate student as a first-time offense. This list is not exhaustive, and classification of a given violation as separable or nonseparable is always heavily dependent on the specific facts and circumstances of the violation.
  - Persistent improper citation without dishonest intent
  - Plagiarism on a minor assignment or a very limited portion of a major assignment
  - Unpremeditated cheating on a quiz or minor examination
  - Unauthorized collaboration with another student on a homework assignment
  - Citing a source that does not exist or that the student has not read for a minor assignment
  - Making up a small number of data points on a laboratory exercise
  - Signing in for another student via attendance sheet or clicker in a course in which attendance counts toward the course grade
3. However, an alleged second nonseparable violation may be treated as an alleged separable violation. Moreover, some violations that would be considered nonseparable for an undergraduate student may be treated as separable for a graduate student.
4. Sanctions for nonseparable violations include, but are not limited to, one or more of the following, and do not include suspension or expulsion.
  - Required participation in a noncredit workshop or seminar on ethics or academic

integrity

- An assigned paper or research project related to ethics or academic integrity
- A make-up assignment that meets the outcomes of the original assignment
- Redoing the assignment with no credit earned for the assignment redo
- A failing grade on the assignment
- A failing grade for the course
- Disciplinary warning or probation

## **B. Separable Violations**

1. Separable violations are very serious violations of academic integrity that affect a more significant portion of the course work compared to nonseparable violations. Separable violations are often characterized by substantial premeditation or planning and clearly dishonest or malicious intent on the part of the student committing the violation.
2. Below are some examples of violations that are most often considered separable. Again, the list is certainly not exhaustive, and classification of a given violation as separable or nonseparable is always heavily dependent on the exact facts and circumstances of the violation.
  - Any violation of the Nurse Practice Act
  - Any violation of the ANA Code of Ethics
  - Copying another student's work
  - Plagiarism
  - Copying or using unauthorized materials, devices, or collaboration
  - Having a substitute take an examination
  - Making up or falsifying evidence, data or other source materials for any assignment, including falsification by selectively omitting or altering data that does not support one's claims or conclusions
  - Facilitating dishonesty by another student on any exam or assignment
  - Intentionally destroying or obstructing another student's work
  - Knowingly violating research or professional ethics
  - Any violation involving potentially criminal activity
3. Sanctions for separable violations may involve suspension or expulsion from the nursing program.

## **X. IV. Guidelines**

- A.** The recommendations for sanctions at each level are not binding but are intended as guidelines for WSU Annie Taylor Dee SON. For both nonseparable and separable violations, the severity of the sanction imposed should be proportional to the severity of the violation committed.
- B.** Violations that may be considered nonseparable for an undergraduate student may be treated as a separable violation for a graduate student.

## **XI. V. Documenting and Reporting Violations**

- A.** All sanctions, whether nonseparable or separable, will be documented and reported.
  1. Nonseparable
    - a. A meeting will be held between the involved faculty or instructor, the student with whom there is a problem, and (as needed) the nursing program director or campus facilitator.
    - b. Faculty or instructor will document the violation through email for

- documentation purposes.
  - c. All nonseparable violations will be reported to the nursing program director and campus facilitator if applicable.
  - d. Follow-up with the student is completed by SON administration as needed.
- 2. Separable
  - a. When a faculty or instructor identifies an issue with separable violations, additional faculty will evaluate the issue.
  - b. A meeting (setting to be determined by program director) will be held between the involved faculty or instructor, the student with whom there is an alleged violation and the nursing program director.
  - c. Faculty or instructor will document the violation using the WSU Annie Taylor Dee SON Academic/Behavioral Documentation Form, which will be maintained in the WSU Annie Taylor Dee SON student file.
  - d. Program Director will bring the separable violation to SON Chair to determine plan of action.
  - e. Follow-up with the student is completed by SON administration.



### **Section III: Professional Conduct/Behavior**

#### **I. General Professionalism Expectations**

- A.** In addition to content knowledge, it is important for nursing students to develop professional behaviors, attitudes, and values. Failure in any of these endeavors will result in poor nursing care being provided to vulnerable populations.

As such, development of these behaviors, attitudes, and values will be part of the earned grade in both nursing theory and clinical courses. Failure in this development will negatively impact course grades and may result in the student failing the course.

**B. Patient Safety and Student Engagement**

For patient safety, students should not work the night shift prior to any daytime laboratory or clinical experience, or work the previous day shift prior to an evening or nighttime clinical experience. This requirement must also be followed during the entire residency and preceptorship experience. In addition, students are expected to be unimpaired, attentive, and engaged in classroom, lab, and clinical settings.

**C. Technology use in the classroom, laboratory, and clinical setting (cell phones, tablets, laptops, etc.)**

Cell phones, tablets, and laptops are not acceptable unless approved by the facility or faculty.

#### **II. Annie Taylor Dee SON Competencies and Expected Professional Conduct/Behaviors**

**A. Patient-Centered Care**

1. Respect and encourage patient values.
2. Seek learning opportunities with patients who represent all aspects of human diversity.
3. Recognize personal attitudes about working with patients from different ethnic, cultural, and social backgrounds.
4. Support patient-centered care for individuals and groups whose values differ from own.
5. Recognize boundaries of therapeutic relationships.
6. Show proper courtesy.
7. Exhibit positive attitude including enthusiasm, motivation, dedication, commitment, showing initiative, and showing an appropriate sense of humor.
8. Empower patients and families appropriately.
9. Attend all clinicals, labs, and classes on time; complete assignments on time. Do not leave clinical without faculty authorization.
10. Maintain professional attire including appropriate uniform, shoes, etc. When appropriate, all students, while in university-sponsored clinical activities, will wear the required uniform designated by the WSU Annie Taylor Dee SON. All uniforms must be neat and clean. If a difference exists between WSU SON policies and facility policies, the WSU SON will conform to the facility policies. Students are expected to comply with facility expectations. Even when nurses in the facilities do not comply with facility expectations, students must comply with both WSU Annie Taylor Dee SON Program and facility expectations.
11. The officially-designated picture ID name tag is required as part of the uniform and must be purchased by students. Some facilities require facility IDs to be worn in

addition to WSU Annie Taylor Dee SON IDs.

- Name tag(s) must be visible and placed on the top half of the chest while in the clinical setting.
12. Students wishing to wear a shirt under their scrub top must comply with the following guidelines:
    - a. The shirt color must be solid white, purple (approved), grey, or black.
    - b. The shirt must not have any logos or printing on it.
    - c. Students are not permitted to wear sweatshirts or hoodies, over their nursing uniform.
    - d. OSHA requires that shoes must be leather or leather-like material that can be wiped clean in the event of an exposure, or the shoe must be covered with impermeable shoe covers. No open-toed, open-backed shoes or shoes with holes will be permitted.
  13. Grooming and personal hygiene are an essential part of professional behavior. Physical appearance is to be neat and clean. A student may be asked to leave the facility at the discretion of the faculty or instructor for any issues concerning grooming or hygiene.
    - a. Clothing should not have any holes, rips, or tears.
    - b. Do not wear perfume or colognes.
    - c. Visible tattoos and body piercings must be covered while in clinical if required by the facility or as per hospital policy.
    - d. Hairstyles and hair color are to be conservative, natural-looking (for example, no blue, pink, purple, neon, etc.), clean, and neat; and should not inadvertently make contact with patients.
      - Hair must be securely pulled back (above the shoulders) when attending clinical.
      - Mustaches and beards should be short, clean, and neatly trimmed.
  14. Students should maintain short, clean fingernails. No artificial nails, wraps, or any type of fingernail polish are allowed.

## **B. Teamwork and Collaboration**

1. Demonstrate awareness of own strengths and limitations as a team member.
2. Value perspectives and expertise of all health-team members.
3. Value different styles of communication used by patients, families, and peers.
4. Contribute to resolution of conflict and disagreement.
5. Be open to ideas, feedback, and constructive criticism.
6. Demonstrate professional interpersonal skills.
7. Take responsibility for own academic performance.
8. While in the classroom, laboratory, and clinical settings, be respectful toward faculty and classmates.
9. Keep cell phones turned off.
10. When working online, refrain from using online as a forum to complain about other students, faculty, or the nursing program.
11. Do not use hostile, attacking, or demeaning comments when reviewing work of peers.
12. All online comments and postings should be done in a professional manner.

## **C. Evidence-based Practice**

1. Value the need for continuous improvement in clinical practice based on new knowledge.
2. Acknowledge own limitations in knowledge and clinical expertise.
3. Seek appropriate help as needed.

## **D. Quality Improvement**

1. Value own and others' contributions to outcomes of care.
2. Identify gaps between local and best practice.
3. Seek supplemental learning opportunities.
4. Assume personal responsibility for actions and consequences.

#### **E. Safety**

1. Demonstrate effective use of technology to support safety and quality.
2. Consistently use strategies to reduce risk of harm to self and others.
3. Students are not permitted to transport patients via private vehicles per WSU legal counsel.
  - If the student does not comply with this policy, the student will assume full liability if an incident occurs.
  - Violation of this policy will result in dismissal from the nursing program.
4. Children are not allowed in classes, labs, or clinical facilities.
5. The nursing student is expected to acknowledge and comply with the administrative authority of the assigned clinical faculty while practicing in the clinical setting.

#### **F. Informatics**

1. Document and plan patient care in an electronic health record where utilized.
2. Protect Confidentiality
  - No pictures will be taken while in a school setting and are not legally allowed to be uploaded to any social media. This requirement includes no picture-taking in classes, clinical, or lab, or of other classmates. Any picture taken while ~~at~~ in a WSU student role or setting requires a signed photo release.
  - Confidentiality includes protecting ALL patient information.
  - Confidentiality extends to protecting the student-learning environment.

### **III. Annie Taylor Dee SON Response to Violation of Professional Conduct/Behavior**

- A.** When behaviors, attitudes, and values are found to be inconsistent with the professional expectations of the WSU Annie Taylor Dee SON, the following actions will be taken:
1. **First Offense:** Student and faculty member will meet. The faculty will identify problematic behavior, help the student identify ways to improve, and provide required documentation to Program Directors. The faculty will also review appropriate professional behaviors as outlined in the WSU Nursing Student Handbook and clarify any concerns the student may have.
  2. **Second Offense** (whether a repeat of the previous problematic behavior or as a result of new concerns): A meeting with student, faculty, and Program Director/ Campus Facilitator will be scheduled. The faculty will identify problematic behavior, help the student identify ways to improve, and provide required documentation to Program Directors. Information will be maintained in a file on the student for the remainder of that student's academic tenure in the WSU Annie Taylor Dee SON.
  3. **Third Offense** (whether a repeat of the previous problematic behavior or as a result of new concerns): A face-to-face meeting with student, faculty, and Program Director/Campus Facilitator will be scheduled. The faculty will identify problematic behavior, help the student identify ways to improve, and provide documentation to Program Directors and SON Chair. A file will be maintained in the Administrative Assistant office on the student for the remainder of that student's academic tenure in the WSU Annie Taylor Dee SON.

- B. Students are expected to adhere to all policies in the WSU Annie Taylor Dee SON Student Handbook and WSU Student Code found in the University Policies and Procedures Manual (PPM).
- C. WSU Annie Taylor Dee SON Competency information is adapted from the following guidelines: Quality and Safety Education for Nurses. (2011). Retrieved from (<http://www.qsen.org>)

#### **IV. Unprofessional Conduct Related to Students Practice of Nursing**

Students are also held responsible for professional behavior as set forth by the Utah Nurse Practice Act (Utah Code-Title 58: Occupations and Professions, Chapter 31b: Nurse Practice Act), which can be found at <http://le.utah.gov/xcode/Title58/Chapter31B/58-31b.html>

#### **V. Readmission/Reapplication/Leave of Absence/Dismissal from Program**

##### **A. Readmission to a Nursing Program**

1. Students are required to complete their designated program of study within 150% of initial semester start, regardless of the reason for withdrawal/leave of absence. Failure to do so may result in program dismissal and/or repetition of course work. Requests will be reviewed by the Admissions and Advancement Committee.
2. Students who have been terminated or who have officially withdrawn from a nursing program may be considered for readmission within the following program-completion guidelines. Consideration for readmission to a nursing program requires a student to submit a letter requesting readmission to the program prior to application deadline. The letter requesting consideration for readmission must be addressed to the WSU Annie Taylor Dee SON Admissions and Advancement Committee. Each case is considered individually, and a student is not guaranteed readmission.
3. Readmission to a specific nursing level of a nursing program is considered under the following conditions:
  - A student in good academic standing who voluntarily withdraws from a program will be granted inactive status and considered for readmission by the Admissions and Advancement Committee. Readmission to a nursing program is not guaranteed and will be granted on a space-available basis which may include placement on a different campus.
  - Students who have been placed on an involuntary Leave of Absence from a program may request to resume program progression at the earliest possible time. Each student's case will be reviewed by the Admissions & Advancement Committee only after receipt of all documentation requested of the student. There will be no guarantee of placement at the students' previously admitted campus.
  - A student experiencing a non-disciplinary Leave of Absence will be permitted, upon resolution of circumstances that prompted the non-disciplinary Leave of Absence, to resume program progression at the earliest opportunity (progression based on space availability).

4. Students enrolled in nursing programs that require clinical assignments who exit a nursing program will need to repeat the drug screen and background check prior to readmission.

**B. Reapplication to a Nursing Program**

1. Students who fail two (2) or more courses must apply for admission through the standard application process.

**C. Leave of Absence from the Nursing Program**

1. Leave of absence from the WSU Annie Taylor Dee SON may include but is not limited to the following with approval from the Admissions and Advancement Committee:
  - a. Illness
  - b. Family matters
  - c. Active-duty commitment
  - d. Religious commitment
  - e. Financial difficulties

**D. Dismissal from the Nursing Program**

1. Dismissal from the WSU Annie Taylor Dee SON may include but is not limited to the following:
  - a. Failure of two (2) or more courses. An unofficial withdrawal (UW) grade constitutes failure of a course.
  - b. Terminated for cause.
  - c. Unethical or unsafe conduct.

## **VI. WSU Student Due-Process Policy (PPM 6-22)**

- A. The purpose of due process is to afford students all rights guaranteed to citizens by the Constitution and laws of the United States and the state of Utah. Students are obliged to obey these laws as well as rules and regulations of WSU and recognized standards of the program and profession for which they are being educated.
- B. Problems between a student and the University generally are in the areas of academics or misconduct. Students should refer to the [WSU Policy & Procedure Manual](http://www.weber.edu/ppm/Policies/6-22_StudentCode.html) (6-22) ([http://www.weber.edu/ppm/Policies/6-22\\_StudentCode.html](http://www.weber.edu/ppm/Policies/6-22_StudentCode.html)) when confronted with concerns about their rights and appropriate due-process procedure.
- C. Students are encouraged to consult with their faculty when they feel they are having problems meeting nursing-program goals, objectives, or academic requirements.

## **VII. Process of Resolution**

- A. The [WSU Policy & Procedure Manual](http://www.weber.edu/ppm/Policies/6-22_StudentCode.html) (6-22) ([http://www.weber.edu/ppm/Policies/6-22\\_StudentCode.html](http://www.weber.edu/ppm/Policies/6-22_StudentCode.html)) provides students the opportunity to appeal decisions concerning clinical/academic performance sanctions and/or misconduct warning.
  1. Informal Resolution:
    - a. Initial conference with faculty
    - b. If no resolution can be reached, referral of problem to Program Level Director/Campus Facilitator
    - c. If no resolution can be reached, referral of problem to WSU Annie Taylor Dee

SON Chair

- d. If no resolution can be reached, referral of problem to DCHP Dean
  - e. If an informal resolution cannot be reached, any party in the dispute may request a formal appeal
2. Formal Appeal:
- a. Contact the Due Process Officer and initiate the hearing process. See [WSU Policy & Procedure Manual](http://www.weber.edu/ppm/Policies/6-22_StudentCode.html) ([http://www.weber.edu/ppm/Policies/6-22\\_StudentCode.html](http://www.weber.edu/ppm/Policies/6-22_StudentCode.html))

## Section IV: Resources for Student Support

### I. Available Resources

- A. The following resources are available to all WSU Annie Taylor Dee SON students <http://www.weber.edu/studentaffairs> . Outreach student access is provided through cooperative agreements with local educational and/or community resources. Student communication and/or information exchange is available to all students via the Internet.
1. WSU Wildcat Email Account
    - a. All students are assigned a computer Wildcat e-mail account. It is the student's responsibility to choose a confidential password for the account immediately. ***Communication from the nursing program and individual faculty to the student will occur through the Wildcat e-mail account only***, unless associated with course work.
    - b. Due to FERPA regulations, personal e-mail addresses will not be recognized. However, a student can forward e-mail from the student's Wildcat mail to his/her personal e-mail account.
  2. Learning Management System
    - a. Communication related to course work is conveyed through the online learning management system.
    - b. Additional resources to enhance learning are embedded in courses.
  3. Financial Aid/Scholarships
    - a. All WSU nursing students, no matter the campus location, obtain Financial Aid from the WSU Financial Aid Office. Instructions on how to apply for FAFSA and financial aid and scholarships, as well as applications, are found at [www.weber.edu/financialaid/apply.html](http://www.weber.edu/financialaid/apply.html). WSU Financial Aid and Scholarship Application opens September 1. The priority deadline for completion of FAFSA is May 1.
    - b. In order to be eligible for any WSU or nursing scholarships, students must complete the FAFSA and WSU Financial Aid and Scholarship applications every academic year. Students can apply for financial aid anytime. However, to ensure that funding is available for the beginning of the semester, students should apply by the established deadlines. Students ***will not*** be considered for any scholarships if the FAFSA and WSU Scholarship applications have not been completed. Students will be notified through their WSU student email account if any additional information is required for a specific scholarship.
    - c. If students are awarded a scholarship, notification will be made by the Financial Aid/Scholarship Office through the student Wildcat e-mail account.
    - d. Any questions regarding WSU Annie Taylor Dee SON scholarships may be submitted to Marguerite Simmons via email at [msimmons1@weber.edu](mailto:msimmons1@weber.edu).
  4. Nursing Organizations and Activities
    - a. All students are required to participate in professional activities and join their respective professional organizations: The National Student Nurses Association (NSNA) and the Utah Student Nurses Association (USNA). A faculty member will serve as advisor for NSNA/USNA on each nursing-program campus. Students in the BSN and MSN programs are strongly encouraged to join and participate in appropriate professional organizations, such as Utah Nurses Association (UNA), American Nurses Association (ANA), and Sigma, when applicable.
    - b. Requirements: Participation is encouraged
      - ADN and RN-BSN: National Student Nurses Association membership
      - MSN and MS to DNP – Professional Organization of choice
      - FNP to DNP – American Association of Nurse Practitioners

**Section V: Student Academic/Behavioral Documentation Form**

Academic/Behavioral Documentation Form

Student Name:	Faculty:	Date:
<p>This document represents a binding, written agreement between the nursing program and the student that identifies the following:</p> <ol style="list-style-type: none"> <li>1. Unsatisfactory student performance.</li> <li>2. A written plan for correction of unsatisfactory student performance.</li> <li>3. Documentation of student's performance related to plan of correction.</li> </ol> <p>Documentation of all student contracts will remain as a permanent record in the student's WSU Annie Taylor Dee SON academic file.</p>		
Type of Occurrence:	<p><b>Violations</b></p> <p><input type="checkbox"/> Non-separable Violations</p> <p><input type="checkbox"/> Separable Violations</p> <p><input type="checkbox"/> <b>Other</b> _____</p>	<p><b>Conduct/Behavioral</b></p> <p><input type="checkbox"/> First Offense</p> <p><input type="checkbox"/> Second Offense</p> <p><input type="checkbox"/> Third Offense</p>
Description of unsatisfactory student performance (attach a separate page if needed)		
Written plan for correction of unsatisfactory student performance (attach a separate page if needed):		
<p>I understand the terms of this agreement and understand that failure to fulfill the identified plan for correction may result in either suspension and/or expulsion from the WSU Annie Taylor Dee SON. Furthermore, I have been informed of my WSU student right to due process and have been provided information regarding WSU student process procedures.</p> <p style="text-align: center;">Student Signature: _____ Date: _____</p> <p style="text-align: center;">Faculty Signature: _____ Date: _____</p> <p style="text-align: center;">PN/RN Facilitator Signature: _____ Date: _____</p> <p style="text-align: center;">Program Director Signature: _____ Date: _____</p> <p style="text-align: center;">SON Chair Signature: _____ Date: _____</p>		
<b>Final Outcome:</b>		
<p style="text-align: center;">Faculty Signature: _____ Date: _____</p> <p style="text-align: center;">PN/RN Facilitator Signature: _____ Date: _____</p> <p style="text-align: center;">Program Director Signature: _____ Date: _____</p> <p style="text-align: center;">SON Chair Signature: _____ Date: _____</p>		



**Weber State University**  
**Dumke College of Health Professions**  
**Annie Taylor Dee School of Nursing**

**Handbook Part C**

**Associate Degree Nursing (ADN) Program Requirements  
and  
PN to RN Program Requirements**

It is a privilege for a student to attend a WSU School of Nursing class, clinical, or lab setting. Any unprofessional, disrespectful, or disruptive behavior exhibited by a student toward an instructor, guest speaker, or classmate(s) during a classroom, clinical, or lab setting is grounds for immediate placement of the student on a behavioral contract with the potential of lowering the student's course grade, failing the student in the course, or being removed from the Nursing Program as determined by the appropriate Nursing Faculty, Program Director, and Annie Taylor Dee School of Nursing Chair.

**A. ASSOCIATE DEGREE REQUIREMENTS:**

- General Education Requirements (37-39 credit hours):
  - Composition (ENG 1010 & ENG 2010 = 6 credits)
  - American Institutions (3 credits)
  - Quantitative Literacy (3-5 credits)
  - Information Literacy (1 credit)
  - Diversity (can be met with a Humanities, Creative Arts, or Social Science Course)
  - Humanities & Creative Arts (9 credits with at least 3 from Humanities, 3 from Creative Arts and do not duplicate departments)
  - Social Sciences (6 credits and do not duplicate departments)
  - Physical and Life Sciences (9 credits with at least 3 from Physical Science, 3 from Life Science and do not duplicate departments)
- General Education (12-14 credits) requirements met with nursing prerequisites:
  - Health Science 1110 (4 credits) or Physiology (4 credits)
  - Chemistry 1110 or 1050 (5 credits)
  - Quantitative Literacy (3-5 credits)
- Major/Minor Courses (33 credit hours)

**B. ASSOCIATE OF APPLIED SCIENCE DEGREE REQUIREMENTS (only applicable for certain PN to RN students who do not meet Associate Degree Requirements):**

- General Education Requirements (18-20 credit hours):
  - Composition (ENG 1010 & ENG 2010 = 6 credits)
    - If you have only taken Engl 2010 to meet Composition & Oral or Written Communication, you must then take 3 credits in Comm 1020, Comm 2110, Engl 2100 or Engl 3100 to meet the Composition requirement. You cannot take Engl 1010.
  - Quantitative Literacy (3-5 credits)
  - Humanities & Creative Arts (3 credits)
  - Social Sciences (3 credits)
  - Physical or Life Sciences (3 credits)
- General Education (12-14 credits) requirements met with nursing prerequisites:
  - Health Science 1110 (4 credits) or Physiology (4 credits)
  - Chemistry 1110 or 1050 (5 credits)
  - Quantitative Literacy (3-5 credits)
- Major/Minor Courses (18 credit hours)
- A minimum of 20 residency hours

**ASSOCIATE DEGREE PROGRAM OF STUDY:**

<b>Coursework Required for</b>	<b>Semester 1</b>	<b>Semester 2</b>	<b>Semester 3</b>	<b>Semester 4</b>
	<b>NRS 2100</b> Pharmacology for Nurses I (3 credits)	<b>NRS 2300</b> Patient Centered Nursing Care I (3 credits)	<b>NRS 2500</b> Patient Centered Nursing Care II (3 credits)	<b>NRS 3200</b> Complex Patient Centered Nursing Care (3 credits)
	<b>NRS 2200</b> Nursing Foundations (3 credits)	<b>NRS 2351</b> Patient-Centered Nursing Care Experience I (3 credits)	<b>NRS 2551</b> Patient Centered Nursing Care Experience II (3 credits)	<b>NRS 3300</b> Entry into Nursing Professional Practice (2 credits)
	<b>NRS 2251</b> Foundations of Nursing Lab and Clinical (3 credits)	Suggested additional courses include: <b>Options listed above</b>	<b>NRS 3100</b> Pharmacology for Nurses II (3 credits)	<b>NRS 3350</b> Entry into Nursing Professional Practice Capstone (3 credits)

**PN TO RN PROGRAM OF STUDY:**

Coursework Required for Graduation	Semester 3	Semester 4
	<p><b>NRSG 2500</b></p> <p>Patient Centered Nursing Care II</p> <p>(3 credits)</p>	<p><b>NRSG 3200</b></p> <p>Complex Patient Centered Nursing Care</p>
	<p><b>NRSG 2551</b></p> <p>Patient Centered Nursing Care Experience II</p> <p>(3 credits)</p>	<p><b>NRSG 3300</b></p> <p>Entry into Nursing Professional Practice</p> <p>(3 credits)</p>
	<p><b>NRSG 3100</b></p> <p>Pharmacology for Nurses II</p> <p>(3 credits)</p>	<p><b>NRSG 3350</b></p> <p>Entry into Nursing Professional Practice Capstone</p> <p>(3 credits)</p>

- Please note that all Associate Degree Nursing programs are full-time programs, but not full-time credit load (12 credit hours). If students require a full-time credit load, there are optional electives that can be taken to assist with Financial Aid, or students can take the courses listed below. Students can also find a list of suggested courses on the Student Bulletin Board under the RN to BSN Program.
  - **AD Electives:**
    - Pathophysiology (3)
    - Nutrition (3)
    - Microbiology (3)
  - **BSN Electives: Only offered for students requiring credits for scholarship during 2<sup>nd</sup> semester of ADN Program of Study and with permission from ADN Program Director**
    - NRSG 4045 End of Life (3)
    - NRSG 3810 Complex Psychiatric Nursing (3)
    - Upper Division Elective Course 3000-4000 (3)
  - **MSN Preparation (electives):**
    - ENG 3210: Advanced College Writing
    - Social Statistics (can only take one):
      - Sociology 3600
      - Psychology 3600
      - Gerontology 3600

**C. PROGRAM REQUIREMENTS**

1. Nursing is a demanding program of study. There is extensive individual study time required including in-class, in-lab, and clinical time. Students who work outside of the school day are encouraged to keep the number of hours within the limits of good health, allowing adequate time for rest, recreation, study, and extracurricular activities. It is *strongly* recommended that nursing students commit to working less than 15-20 hours per week.
2. All required course materials (i.e. books, eBooks, electronic charting product, etc.), must be purchased before or within the first week of the semester. All materials need to be kept throughout the entire program. The bookstore site has an up-to-date list of course materials.
3. In an effort to remain equitable to our students and our clinical partnerships, all student paperwork must be turned in and/or uploaded to the appropriate recipients by established deadlines.
4. Students are REQUIRED to check the ADN/PN to RN Student Bulletin Board at least once a week. The Student Bulletin Board contains the most up-to-date information, and provides the fastest form of mass communication between the program and students.
5. WSU approved uniforms must be ordered by the due date posted on the Student Bulletin Board to ensure on-time delivery for clinical, simulation, and lab days. It is recommended students purchase 2 sets as they will be required to wear them in lab, simulation, and clinical.
6. ADN and PN to RN students will be required to purchase the NCLEX testing preparation product. Payments will be split between the 3<sup>rd</sup> and 4<sup>th</sup> semester of the program.

#### **D. ACADEMIC STANDARDS**

1. Student grading requirements are as follows:
  - A student must achieve at least an 80% average score on the combined unit-exam and final-exam test scores. Failure to achieve an average examination score of 80% or higher in a course at the conclusion of the semester will result in a failing course grade (C+).
  - Students must have an 80% (B-) or higher to pass any nursing course and continue in the nursing program.
  - **Rounding**
    - Any grade below an 80% (79.5) will not be rounded.
    - All other grades will be rounded at 0.5 (i.e. 94.5 can be rounded to an A).
  - **Evaluation Incentive** – Each semester course and faculty evaluations will be available online in Chi Tester. Students who complete both course and faculty

evaluations will receive a 1% completion incentive that will be added to their final grade. Any student who is at a failing grade during this time will not be allowed the 1% evaluation incentive.

## 2. Late Assignments and Exams

- Students are responsible to notify faculty members regarding difficulty with assignments or crises that block their ability to complete an assignment or test in the designated time frame.
- Nursing faculty are NOT required to accept late assignments or tests.
- A zero (0) may be recorded for the score.
- Faculty may decrease the highest score that can be earned for late work.

## 3. Dosage Calculation

Weber State University School of Nursing is committed to student and patient safety in clinical practice. To promote the preparation of nursing students for medication administration, all nursing students in Nursing 2100 and Nursing 3100 will complete a standardized dosage calculation exam as part of the criteria for the course. ***The exam must be completed by week 2 of the semester. The exam will account for 5% of the total grade in the course.*** In addition, dosage calculations will be integrated throughout the entire ADN curriculum. All exams in every ADN course will contain 2-5 dosage calculation questions.

## 4. Clinical

Students and instructors are guests in clinical facilities and are expected to act with the utmost respect and professionalism. Students are expected to abide by clinical facility policies and procedures including but not limited to: no cell phones on the units, no picture taking, and adherence to HIPPA regulations, etc. as outlined in Part B, Section III of the Student Handbook.

Clinical experiences vary each semester of the program. There is a requirement of 135 clinical, simulation, and/or lab hours each semester. Start and end times of clinical shifts vary according to facility. Facility required clinical orientation hours may be counted toward clinical hours up to and not more than 2 hours.

First-Third semester: Students will complete 75 hours of clinical time, 30 hours in simulation, and 30 hours in lab skills, for a total of 135 clinical hours. Lab will be 8 hours, once a week for the first 3 weeks of the semester (unless otherwise indicated). Clinical shifts will be 12 hours, once a week, every other week, for a total of 6 clinical days. Simulation will be on alternating weeks from clinical, once a week, for 4 hours per day.

Note: \*A schedule will be provided in your Canvas course with details.

Fourth semester: Students will complete 135 hours of clinical capstone time and no lab time. Students will work with their assigned nurse and attend the nurse's scheduled shift hours until the student reaches 135 hours. Students will have 4-6 weeks to complete their assigned 135 hours. The Capstone\* experience is unique to the fourth semester of the program. We do our best to align students with learning

opportunities directed towards future career placement. Notification of student placements will be posted on the student bulletin board no sooner than two weeks prior to the start of fourth semester. Students **WILL NOT** be allowed to arrange their own capstone experience. Students are not allowed to precept in facility units where they work unless requested by facility manager. All capstone experiences must be completed in the allotted time given. Students must work the same shifts as their assigned preceptor during their capstone, except for scheduled class days and the scheduled days for NCLEX live review. **Students are expected to adhere to the highest professional standards, and maintain excellent communication with their preceptor and faculty instructor.**

- \* **During the student's Capstone, students may not take telephone or verbal orders, or sign as the second person checking off blood or insulin.**
- 5. The program has a two-day testing policy. All course exams are offered on a testing platform outside of class time. Tests may be taken either at a testing center and/or through Proctorio. Test dates will be communicated per course on the first day of class. Any discussion of test items during open test times is considered cheating and will follow the consequences as outlined in Handbook Part B.

#### **E. ADVISEMENT**

1. It is the student's responsibility to ensure CATTRACKS are up-to-date. Any box that is not checked will delay graduation clearance. Check and make sure that both the AS in Nursing and BS in Nursing are reflected and the catalog year is the academic year of program start. If any discrepancies are noted, contact Marguerite Simmons at [msimmons1@weber.edu](mailto:msimmons1@weber.edu) and identify the problem.
2. On or before **WEEK THREE** of the semester, students must contact their advisor to set up an email or face-to-face meeting. It is important to not procrastinate and allow time for problems to be resolved (i.e. class schedule addition or deletions, transcript issues, etc.). **This process will need to be repeated every semester until graduation.**
3. If students attempt to set up a meeting with the faculty advisor and there is no reception or follow through on the faculty end, please notify either Marguerite at [msimmons1@weber.edu](mailto:msimmons1@weber.edu) and/or Dr. Rieneke Holman at [rienekeholman@weber.edu](mailto:rienekeholman@weber.edu) ASAP.

#### **F. PROGRAM PROGRESSION & COMPLETION:**

1. All ADN and PN to RN students are required to complete their designated program of study within 150% of initial semester start, regardless of the reason for withdrawal/leave of absence. Failure to do so may result in program dismissal and/or repetition of course work.
2. When students receive a failing grade (anything below 80% B-) in any nursing course, progression in the program will be reviewed and recommendations made by the ADN Program Director. Students will receive the grade earned, but not be

allowed to progress without repeating the course. Failed courses must be retaken, but may or may not be taken the immediate semester following the failure, depending on program availability.

3. Students who have not completed the support classes must do so in the sequence outlined by the current curriculum pattern. Failure to follow curriculum pattern may be grounds for involuntary leave of absence from the nursing program.
4. Students enrolled in NRSG 2100, NRSG 2200, NRSG 2251, NRSG 2300, NRSG 2351, NRSG 2500, NRSG 2551, NRSG 3100, NRSG 3200, NRSG 3300, and NRSG 3350 will be required to repeat the failed course. Students may be advised by the ADN Program Director to also retake the clinical or didactic courses offered the failed semester to increase the student's likelihood of passing the failed course.
5. Failure of two (2) nursing courses at any time during the program mandates immediate dismissal from the program. To be reinstated in the program, a student must apply through the standard application process and repeat their entire program.
6. The PN to RN program is intended for licensed practical nurses currently working or those having successfully graduated from an accredited Practical Nursing Program and are eligible for licensure.
7. PN to RN students, who do not have their PN license, must take and pass NCLEX PN prior to the end of the third semester. If NCLEX PN has not been taken and passed prior to moving to the fourth semester, progression in the program will be reviewed and recommendations made by the ADN Program Director.
8. Students withdrawing from any nursing course must notify their faculty and the ADN Program Director. Withdrawn courses must be retaken, but may or may not be taken the immediate semester following the withdrawal, depending on program availability. Reminder: Students are required to complete their designated program of study within 150% of initial semester start, regardless of the reason for withdrawal/leave of absence. Failure to do so may result in program dismissal and/or repetition of course work. Requests will be reviewed by the ADN Director.
9. Students withdrawing from the program, and/or requesting readmission for any reason, must submit a letter to the School of Nursing Admissions and Advancement Committee stating their request. Reminder: Students are required to complete their designated program of study within 150% of initial semester start, regardless of the reason for withdrawal/leave of absence. Failure to do so may result in program dismissal and/or repetition of course work. Requests will be reviewed by the ADN Director.
10. Students are allowed only one readmission to the program and automatic readmission is not guaranteed. Students will be granted readmission as soon as a position is available and will be notified by official letter noting the semester they



will be readmitted to. Readmission will allow for program completion within the allotted time.

11. In addition to successful completion of the fourth semester, all students will attend a mandatory Live Review within the fourth semester as part of N3300; this is a three-day NCLEX prep that will assist students in preparing for the NCLEX examination.
12. Incomplete (I) grades in any nursing course must be completed prior to registering for another course.
13. **CASTLEBRANCH:** All required materials are to be current in Castlebranch throughout the program. This includes flu shots, CPR, immunizations, background check, drug test, etc.). Failure to keep ALL required materials (overdue and rejected items) up-to-date will result in a 3% grade deduction in your clinical/sim/lab course each week the materials are not updated.

#### **G. LICENSURE FOR PN AND RN**

Every student must follow the directions for licensure that are on the Student Bulletin Board under second and fourth semester; these directions are directly from DOPL. Failure to follow the steps, in order, results in money lost and possible fraudulent charges with the Federal Government. If students have any questions on licensing instructions, they must contact DOPL directly.