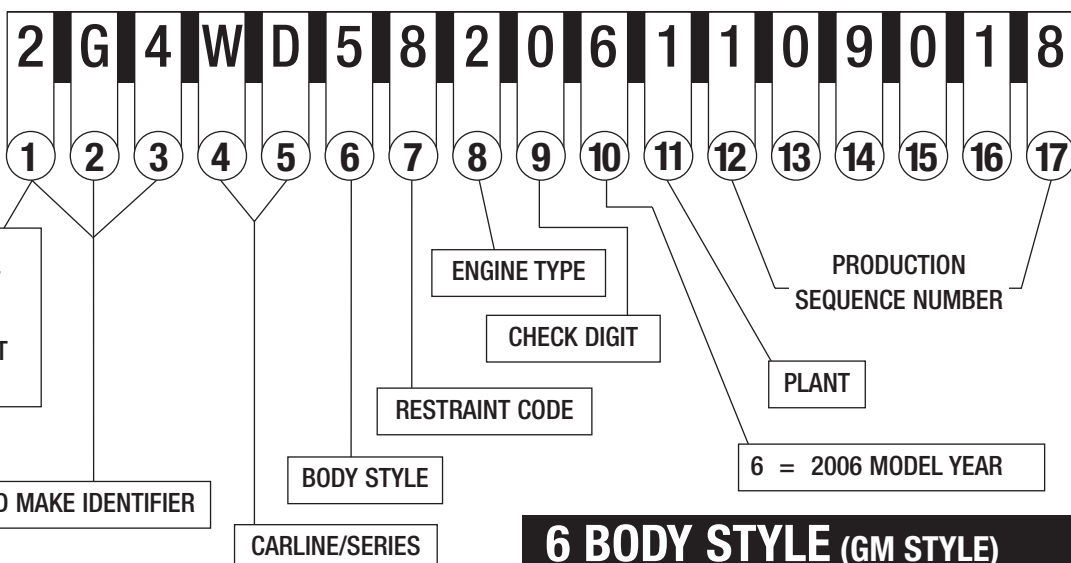




2006 PASSENGER CAR VIN SYSTEM

TYPICAL VIN

POSITION NO.



- 1,5 = U.S. BUILT
- 2 = CANADIAN BUILT
- 3 = MEXICO BUILT
- 6 = AUSTRALIA BUILT
- K = S. KOREA BUILT

WORLD MAKE IDENTIFIER

CARLINE/SERIES

BODY STYLE

RESTRAINT CODE

CHECK DIGIT

ENGINE TYPE

PRODUCTION SEQUENCE NUMBER

PLANT

6 = 2006 MODEL YEAR

1-3 WORLD MAKE IDENTIFIER

- | | |
|--|----------------------------|
| 1 - CHEVROLET
1G1, 2G1, 3G1, KL1 | 6 - CADILLAC
1G6 |
| 2 - PONTIAC
1G2, 2G2, 3G2, 5Y2, 6G2, KL2 | 8 - SATURN
1G8 |
| 4 - BUICK
1G4, 2G4, 3G4 | |

4-5 CARLINE/SERIES

- | | |
|---|---|
| CHEVROLET | Z/M - G6 GTP COUPE/SEDAN/
CONVERTIBLE |
| A/J - COBALT BASE | |
| A/K - COBALT LEV 1 -
ALL MODELS | BUICK |
| A/L - COBALT LEV 2 -
ALL MODELS | H/D - LUCERNE CXL |
| A/M - COBALT LEV 3 -
ALL MODELS | H/P - LUCERNE CX |
| A/P - COBALT LEV 4 -
SPORT COUPE SS | H/E - LUCERNE CXS |
| A/Z - COBALT LEV 2 -
LUXURY EDITION | H/R - LUCERNE CXL (SPECIAL) |
| J/D - OPTRA | W/C - LACROSSE CX |
| J/K - OPTRA LS | W/D - LACROSSE CXL |
| M/D - MATIZ | W/E - LACROSSE CXS |
| T/D - AVEO BASE/LS | W/F - ALLURE CX
(CANADA ONLY) |
| T/G - AVEO LT | W/H - ALLURE CXS
(CANADA ONLY) |
| U/D - U100 | W/J - ALLURE CXL
(CANADA ONLY) |
| V/B - EPICA LS | CADILLAC |
| V/D - EPICA LS | D/C - STS-V8 |
| V/P - EPICA LT | D/M - CTS |
| W/B - IMPALA LS SEDAN | D/N - CTS-V |
| W/C - IMPALA LT SEDAN | D/P - CTS HIGH FEATURE V6 |
| W/D - IMPALA SS SEDAN | D/R - CTS - RH DRIVE |
| W/S - IMPALA POLICE SEDAN | D/W - STS |
| W/T - IMPALA LT 3.5 SEDAN | D/X - STS-V |
| W/U - IMPALA LTZ | K/D - DEVILLE |
| W/J - MONTE CARLO LS COUPE | Y/V - XLR ROADSTER |
| W/K - MONTE CARLO LT COUPE | Y/X - XLR-V |
| W/L - MONTE CARLO SS COUPE | |
| W/M - MONTE CARLO LT 3.5
COUPE | SATURN |
| W/N - MONTE CARLO LTZ COUPE | A/F - ION LEVEL 1
SEDAN MANUAL |
| Y/Y - CORVETTE | A/G - ION LEVEL 1
SEDAN AUTO |
| Z/S - MALIBU LS | A/H - LEVEL I BASE |
| Z/T - MALIBU LT | A/J - ION LEVEL 2
SEDAN AUTO |
| Z/U - MALIBU LTZ | A/K - ION LEVEL 3
SEDAN MANUAL |
| Z/W - MALIBU MAXX SS | A/L - ION LEVEL 3
SEDAN AUTO |
| | A/M - ION LEVEL 2
COUPE MANUAL |
| PONTIAC | A/N - ION LEVEL 2
COUPE AUTO |
| A/J - PURSUIT BASE (CANADA) | A/T - ION RED LINE COUPE |
| A/L - PURSUIT LS (CANADA) | A/U - LEVEL II BASE |
| A/N - PURSUIT SPORT (CANADA) | A/V - ION LEVEL 3
COUPE MANUAL |
| M/B - SOLTICE CONVERTIBLE | A/W - ION LEVEL 3
COUPE AUTO |
| S/L - VIBE, FWD | A/X - LEVEL III BASE |
| S/M - VIBE, AWD | A/Y - ION - COUPE
RED LINE TUNER (HMD) |
| S/N - VIBE, GT | A/Z - ION LEVEL 2
SEDAN MANUAL |
| T/D - WAVE | |
| T/W - WAVE LT | |
| W/C - GRAND PRIX 367P SEDAN | |
| W/P - GRAND PRIX SEDAN | |
| W/R - GRAND PRIX GT SEDAN | |
| V/X - GTO | |
| Z/F - G6 SE SEDAN | |
| Z/G - G6 SE1 SEDAN | |
| Z/H - G6 GT COUPE/SEDAN/
CONVERTIBLE | |

6 BODY STYLE (GM STYLE)

- | | |
|---|----------------------------------|
| 1 | TWO-DOOR COUPE (27, 37, 47, 57) |
| 2 | TWO-DOOR (07, 08, 77, 87) |
| 3 | TWO-DOOR CONVERTIBLE (67) |
| 5 | FOUR-DOOR SEDAN (19, 69) |
| 6 | FOUR-DOOR SEDAN (26, 29, 48, 68) |
| 7 | FOUR-DOOR MPV (06, 46) |
| 8 | FOUR-DOOR STATION WAGON (35) |
| 9 | FOUR-DOOR STATION WAGON (75) |

7 RESTRAINT CODES

- | | |
|---|--|
| 1 | DRIVER & PASSENGER INFLATABLE RESTRAINT - FRONT |
| 2 | ACTIVE (MANUAL) BELTS W/DRIVER & PASSENGER INFLATABLE RESTRAINT - FRONT & SIDE |
| 3 | ACTIVE (MANUAL) BELTS W/DRIVER & PASSENGER INFLATABLE RESTRAINT - FRONT, SIDE & ROOF |
| 4 | ACTIVE (MANUAL) BELTS W/DRIVER & PASSENGER INFLATABLE RESTRAINT - FRONT & ROOF |
| 5 | ACTIVE (MANUAL) BELTS W/DRIVER & PASSENGER INFLATABLE RESTRAINT - FRONT W/OCCUPANT SENSOR |
| 6 | ACTIVE (MANUAL) BELTS W/DRIVER & PASSENGER INFLATABLE RESTRAINT - FRONT AND SIDE & OCCUPANT SENSOR |
| 7 | ACTIVE (MANUAL) BELTS W/DRIVER & PASSENGER INFLATABLE RESTRAINT - FRONT, SIDE AND ROOF & OCCUPANT SENSOR |
| 8 | ACTIVE (MANUAL) BELTS W/DRIVER & PASSENGER INFLATABLE RESTRAINT - FRONT AND ROOF & OCCUPANT SENSOR |

8 ENGINE TYPE

CODE	ENG. OPT.	DISP.	CYL.	FUEL* SYSTEM	DIV. USAGE
A	LH2	4.6L	V8	SFI	6
B	LE5	2.4L	L4	MFI	1,2,8
C	LS4	5.3L	V8	SFI	2
D	LC3	4.4L	V8	MFI	1,6
E	LS7	7.0L	V8	SFI	1
F	L61	2.2L	L4	MFI	1,2,8
J	LG8	3.1L	V6	SFI	4
K	LZE	3.5L	V6	SFI	1,2
L	LNK	1.8L	L4	SFI	2
L	LBK	2.5L	L6	-	2
M	L95	1.4L	L4	MFI	1
N	LZ4	3.5L	V6	SFI	1
P	LSJ	2.0L	L4	MFI	8
R	LZ8	3.9L	V6	MFI	1
T	LP1	2.8L	V6	SFI	6
U	LS2	6.0L	V8	SFI	1,4,6
Y	LD8	4.6L	V8	SFI	2,4,6
Z	L34	2.0L	L4	MFI	1,2
1	LZ9	3.9L	V6	SFI	1
2	L26	3.8L	V6	SFI	2,4
4	L32	3.8L	V6	SFI	2
6	L91	1.6L	L4	-	1
7	LY7	3.6L	V6	SFI	6
8	LX9	3.5L	V6	SFI	8
8	LV6	1.8L	L4	MFI	2
9	L37	4.6L	V6	SFI	6

*LEGEND

MFI = MULTIPORT FUEL INJECTION
SFI = SEQUENTIAL FUEL INJECTION

11 PLANT

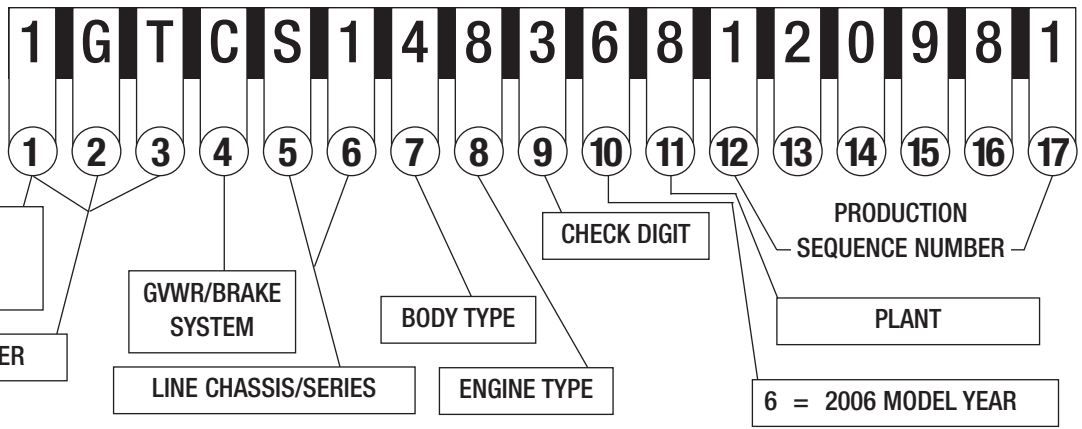
- | | | | | |
|------------------------------|--------------------------------|---------------------------|-----------------------------|-------------------------|
| B - LANSING MI | K - KUNSAN S. KOREA | Y - WILMINGTON DE | 4 - ORION MI | 9 - OSHAWA #1 ON |
| B - BUPYUNG S. KOREA | L - ELIZABETH AUSTRALIA | Z - FREMONT CA | 5 - BOWLING GREEN KY | |
| C - LANSING MI | M - LANSING MI | Z - SPRING HILL TN | 7 - LORDSTOWN OH | |
| C - CHANGWON S. KOREA | S - RAMOS ARIZPE MEXICO | 0 - LANSING MI | 8 - TILLSONBURG ON | |
| F - FAIRFAX II KS | U - HAMTRAMCK MI | 1 - OSHAWA #2 ON | (IPC) | |

2006 LIGHT DUTY TRUCK, MULTIPURPOSE PASSENGER VEHICLE (MPV) AND INCOMPLETE VEHICLE VIN SYSTEM

TYPICAL VIN

POSITION NO.

1, 4, 5 = U.S. BUILT
2 = CANADIAN BUILT
3 = MEXICO BUILT



1-3 WORLD MAKE IDENTIFIER

CHEVROLET

1GB* 2GB* 3GB*
1GC 2GC 3GC
1GA** 1GN 3GN
2CN

GMC

1GD* 2GD* 3GD*
1GT 2GT 3GT
1GJ** 1GK 3GK

BUICK

3G5 4GL* 5GA

SAAB

5S3

SATURN

4NT* 5GZ

CADILLAC

1GE* 1GY 3GY

PONTIAC

1G5* 1GM 2CK 3G7

ISUZU

1GG* 4NU

HUMMER

5GR 5GT

* Incomplete Vehicle

** Van w/seating exceeding
10 Passengers

4 GVWR/BRAKE SYSTEM

CODE	GVWR RANGE (IN POUNDS)	BRAKE SYSTEM
A	0 - 3000	HYD
B	3001 - 4000	HYD
C	4001 - 5000	HYD
D*	5001 - 6000	HYD
E**	6001 - 7000	HYD
F**	7001 - 8000	HYD
G	8001 - 9000	HYD
H	9001 - 10000	HYD
J	10001 - 14000	HYD
K	14001 - 16000	HYD
L	16001 - 19500	HYD
M	19501 - 26000	AIR/HYD

* BUICK & CHEVROLET

COMMERCIAL BODY/CHASSIS

**CADILLAC COMMERCIAL BODY/CHASSIS

5-6 LINE CHASSIS/SERIES

CHEVROLET/GMC*

A/1 HHR LS (1/2 TON)
A/2 HHR LT (1/2 TON)
B/9 INCOMPLETE (CHEVROLET)
C/1 FULL SIZE TRUCK 4x2, 1500 (1/2 TON)
C/2 FULL SIZE TRUCK 4x2, 2500 (3/4 TON)
C/3 FULL SIZE TRUCK 4x2, 3500 (1 TON)
C/5 GMC 3 TON (MEX ONLY)
C/6 FULL SIZE TRUCK 4x2, 1500 (1/2 TON) LUXURY
C/7 FULL SIZE TRUCK 4x2, 2500 (3/4 TON) LUXURY
C/8 FULL SIZE TRUCK 4x2, 3500 (1 TON) LUXURY
K/1 FULL SIZE TRUCK 4x4, 1500 (1/2 TON)
K/2 FULL SIZE TRUCK 4x4, 2500 (3/4 TON)
K/3 FULL SIZE TRUCK 4x4, 3500 (1 TON)
K/5 GMC 3 TON (MEX ONLY)
K/6 FULL SIZE TRUCK 4x4, 1500 (1/2 TON) LUXURY
K/7 FULL SIZE TRUCK 4x4, 2500 (3/4 TON) LUXURY
K/8 FULL SIZE TRUCK 4x4, 3500 (1 TON) LUXURY
G/1 EXPRESS, SAVANA 4x2, 1500 (1/2 TON)
G/2 EXPRESS, SAVANA 4x2, 2500 (3/4 TON)
G/3 EXPRESS, SAVANA 4x2, 3500 (1 TON)
H/1 EXPRESS, SAVANA AWD, 1500 (1/2 TON)
H/2 EXPRESS, SAVANA AWD, 2500 (3/4 TON)
L/1 EQUINOX LS 4x2
L/2 EQUINOX LS 4x4
L/6 EQUINOX LT 4x2
L/7 EQUINOX LT 4x4
S/1 COLORADO, SSR, BLAZER, TRAILBLAZER, TRAILBLAZER (1/2 TON),
CANYON, ENVOY, ENVOY XL 4X2 (1/2 TON), SONOMA
S/6 ENVOY DENALI, DENALI XL 4X2 (1/2 TON)
T/1 COLORADO, SSR, BLAZER, TRAILBLAZER, TRAILBLAZER (1/2 TON), SONOMA,
CANYON Z85 SLE, ENVOY SLE, ENVOY XL SLE 4X4 (1/2 TON)
T/6 ENVOY DENALI, DENALI XL 4X4 (1/2 TON)
U/0 UPLANDER APV 4x2 RWB (1/2 TON) BASE
U/2 UPLANDER LS APV 4x2 RWB (1/2 TON)
U/3 UPLANDER LT APV 4x2 RWB (1/2 TON)
V/0 UPLANDER APV 4x2 EWB (1/2 TON) BASE
V/1 UPLANDER CARGO APV EWB (1/2 TON)
V/2 UPLANDER LS APV EWB (1/2 TON)
V/3 UPLANDER LT APV EWB (1/2 TON)
X/3 UPLANDER AWD LT APV (1/2 TON)
BUICK
A/0 RENDEZVOUS SRV 4x2
B/0 RENDEZVOUS SRV 4x4
B/9 INCOMPLETE
S/1 RAINIER 4x2

T/1 RAINIER 4x4
V/1 TERRAZA EXT MOBILITY INCOMPLETE (1/2 TON)
V/2 TERRAZA EXT EWB-CX (1/2 TON)
V/3 TERRAZA EXT CXL (1/2 TON)
X/2 TERRAZA AWD EXT CX (1/2 TON)
X/3 TERRAZA AWD EXT CXL (1/2 TON)
CADILLAC
C/6 ESCALADE, 4x2 1500 (1/2 TON) LUXURY
E/6 SRX
K/4 ESCALADE, ESCALADE ESV, ESCALADE EXT PLATINUM EDITIONS (1/2 TON)
LUXURY
K/6 ESCALADE, ESCALADE ESV, ESCALADE EXT 4x4 1500 (1/2 TON) LUXURY
K/0 INCOMPLETE (DTS HEARSE)
K/9 INCOMPLETE (DTS LIMOUSINE)
PONTIAC
L/6 TORRENT FWD (1/2 TON)
L/7 TORRENT AWD (1/2 TON)
U/0 MONTANA SV6 RWB 4x2 (1/2 TON) BASE (US/CANADA & SAU1/MEXICO 1SB)
U/2 MONTANA SV6 RWB 4x2 (1/2 TON) (US/CANADA & SAU2/MEXICO 1SC)
U/3 MONTANA SV6 RWB 4x2 (1/2 TON) (US/CANADA & SAU3/MEXICO 1SE)
V/0 MONTANA SV6 EWB 4x2 (1/2 TON) BASE 1SA (MEXICO 1SB)
V/1 MONTANA SV6 EWB MOBILITY INCOMPLETE (1/2 TON)
V/2 MONTANA SV6 EWB (1/2 TON) (US/CANADA 1SB, MEXICO 1SC)
V/3 MONTANA SV6 EWB (1/2 TON) (1SB DOMESTIC)
V/3 MONTANA SV6 EWB (US/CANADA 1SB, MEXICO 1SC)
X/2 MONTANA SV6 AWD (1/2 TON) (US)
X/3 MONTANA SV6 AWD (1/2 TON) (CANADA 1SC)
SATURN
V/0 RELAY EXT & RF2 4/2 (1/2 TON)
V/1 RELAY EXT MOBILITY INCOMPLETE (1/2 TON)
V/2 RELAY EXT & RF3 (1/2 TON)
X/2 RELAY AWD & RF3 (1/2 TON)
Z/2 VUE FWD MANUAL
Z/3 VUE FWD AUTO
Z/4 VUE AWD 4 CYL.
Z/5 VUE FWD 6 CYL.
Z/6 VUE AWD 6 CYL.
HUMMER
N/1 MID SIZE 4x4 SUV (1/2 TON) H3
N/2 FULL SIZE 4x4 SUV/SUT, (3/4 TON) H2
ISUZU
S/1 ASCENDER 4x2 (1/2 TON)
T/1 ASCENDER 4x4 (1/2 TON)
SAAB
T/1 SAAB, 9-7, SUV

* LINE/CHASSIS DESCRIPTION INCLUDES ALL FULL SIZE CHEVROLET AND GMC TRUCK MODELS

7 BODY TYPE

- 0 – COMMERCIAL CHASSIS
(CHEVROLET/BUICK/CADILLAC)
- 1 – COMMERCIAL SPECIAL AND RV CUTAWAY
(INCLUDES CHEVROLET EXPRESS COMMERCIAL, GMC SAVANA CARGO SPECIAL AND CAMPER SPECIAL)
- 2 – SPORT UTILITY TRUCK
(AVALANCHE, ESCALADE EXT, ESCALADE EXT PLATINUM, H2 SUT)
- 3 – FOUR-DOOR CAB/UTILITY
(INCLUDES TRAILBLAZER, RAINIER, ENVOY, ENVOY XL, EQUINOX FULL SIZE – YUKON, TAHOE, DENALI ESCALADE, ESCALADE PLATINUM, H2 AND CREW CAB)
- 3 – FOUR-DOOR ALL PURPOSE VEHICLE
(MONTANA, UPLANDER, TERRAZA, RELAY), RENDEZVOUS (SRV), SATURN SUV, SRX, HHR
- 4. – TWO-DOOR CAB
(COLORADO, SSR, CANYON, SIERRA, SILVERADO)
- 5 – VAN
(EXPRESS, SAVANA)
- 6 – SUBURBAN, YUKON XL, ENVOY XL, DENALI XL, TRAILBLAZER EXT, ASCENDER, ESCALADE ESV, ESCALADE ESV PLATINUM
- 7 – MOTOR HOME CHASSIS
- 8 – TWO-DOOR UTILITY
(BLAZER)
- 9 – EXTENDED CAB/EXTENDED VAN
(COLORADO, CANYON, SIERRA, SILVERADO, EXPRESS AND SAVANA)

8 ENGINE TYPE

CODE	ENG. OPT.	DISP.	CYL.	FUEL SYSTEM**
A	LH2	4.6L	V8	SFI
B	L33	5.3L	V8	SFI
D	L61	2.2L	L4	MFI
D	LBZ	6.6T	V8	DSL
E	LD9	2.4L	L4	MFI
F	LNJ	3.4L	V6	SFI
G	L18	8.1L	V8	MFI
H	LS2	6.0L	V8	SFI
L	LX9	3.5L	V6	SFI
M	LH6	5.3L	V8	SFI
N	LQ9	6.0L	V8	MFI
P	LE5	2.4L	L4	MFI
R	L31	5.7L	V8	CPI
S	LL8	4.2L	L6	MFI
T	LM7	5.3L	V8	MFI
U	LQ4	6.0L	V8	MFI
V	LR4	4.8L	V8	MFI
W	LMN	2.0L	L4	CPI
X	LU3	4.3L	V6	MFI
Y*	LD8	4.6L	V8	MFI
Z	L59	5.3L	V8	MFI
1	LZ9	3.9L	V6	SFI
2	LLY	6.6T	V8	DSL
4	L66	3.5L	V6	MFI
5	LLW	2.0T	L4	CPI
6	L52	3.5L	L5	MFI
7	LY7	3.6L	V6	SFI
8	LK5	2.8L	L4	MFI
9	LM8	3.2L	V6	MFI
9*	L37	4.6L	V8	MFI

* USED ONLY IN BUICK, CHEVROLET & CADILLAC PASSENGER CAR – DERIVED INCOMPLETE VEHICLES

** DSL = DIESEL, MFI = MULTIPOINT FUEL INJECTION. CPI = CENTRAL PORT INJECTION, T = TURBO SFI = SEQUENTIAL FUEL INJECTION



2006 MEDIUM DUTY TRUCK AND INCOMPLETE VEHICLE VIN SYSTEM

TYPICAL VIN

POSITION NO.

1, 4 = U.S. BUILT
2 = CANADIAN BUILT
J = JAPAN BUILT

WORLD MAKE IDENTIFIER

SERIES

GVWR/BRAKE SYSTEM

TRUCK LINE & CAB TYPE

CHASSIS TYPE

CHECK DIGIT

ENGINE TYPE

PRODUCTION SEQUENCE NUMBER

PLANT

6 = 2006 MODEL YEAR

1-3 WORLD MAKE IDENTIFIER

-CHEVROLET

1GC 2GC
1GB* 2GB*
4KB* J8B*

-GMC

1GT 2GT
1GD* 2GD*
4KD* J8D*

-ISUZU

4GT* 4KL JAL

* Incomplete Vehicle

5 SERIES

4 - 4500 SERIES (C4/W4)

5 - 5500 SERIES (C5/W5)

6 - 6500 SERIES (C6(H6*)/T6F)

7 - 7500 SERIES (B7/C7(H7*)/D7/T7F/W7)

8 - 8500 SERIES (C8(H8*)/T8F)

* H6, H7, H8 ARE IDENTIFIERS FOR C6, C7, C8 MODELS W/ISUZU NAMEPLATE CONVERSION OPTION Z89.

6 TRUCK LINE & CAB TYPE (MODEL)

A - FORWARD/TILTMASTER MEDIUM, TILT, 72.0 BBC (W5)

B - FORWARD/TILTMASTER MEDIUM, TILT, 67.0 BBC (W4)

E - C SERIES (H SERIES), CREW CAB (C4E - C8E)

C - C SERIES (H SERIES), CONVENTIONAL CAB (C4C - C8C)

V - C SERIES (H SERIES), CUTAWAY COMMERCIAL CAB (C4V - C8V)

U - C SERIES (H SERIES), CUTAWAY MOTORHOME (C4U/C5U)

J - W SERIES NPR/NPQ NON-TILT CAB, 108.0 BBC (W4/W5)

F - T SERIES TILT CAB, 86.0 BBC (T6F - T8F)

BBC = BUMPER TO BACK OF CAB

4 GVWR/BRAKE SYSTEM

CODE	GVWR RANGE (IN POUNDS)	BRAKE SYST.
A	9001 - 10,000	HYD
B	10,001 - 14,000	HYD
C	14,001 - 16,000	HYD
D	14,001 - 16,000	AIR
E	16,001 - 19,500	HYD
F	16,001 - 19,500	AIR
G	19,501 - 23,500	HYD
H	19,501 - 23,500	AIR
J	23,501 - 26,000	HYD
K	23,501 - 26,000	AIR
L	26,001 - 33,000	HYD
M	26,001 - 33,000	AIR
N	33,001 - 40,500	HYD
P	33,001 - 40,500	AIR
R	40,501 - 48,500	HYD
S	40,501 - 48,500	AIR
T	48,501 - 58,000	AIR
V	58,001 - 69,500	AIR
X	GLIDER KIT	—

7 CHASSIS TYPE

0 - GLIDER KIT

1 - 4 X 2 (2 AXLES - 1 DRIVING)

3 - 4 X 4 (2 AXLES - 2 DRIVING)

4 - 6 X 4 (3 AXLES - 2 DRIVING)

8 ENGINE TYPE

C - CAT 7.2L L6 TURBO ELECTRONIC (LG5)

G - GM 8.1L V8 MFI GASOLINE (L18)

X - GLIDER KIT LESS ENGINE

2 - 6.6L V8 DI TURBO DIESEL, DURAMAX (LLY)

3 - 7.8L L6 DI TURBO DIESEL, I/C, DURAMAX (LG4)

4* - ISUZU 4.75L L4 4HE1-XS I/C TURBO DIESEL (1C3)

5* - ISUZU 4.75L L4 4HE1-XN I/C TURBO DIESEL (1C2)

6* - ISUZU 5.2L L4 I/C TURBO DIESEL (1L5)

* CODES 4, 5 AND 6 ARE FOR ISUZU/GM ENGINES USED BY ISUZU/GM ORDERED VEHICLES BUILT BY ISUZU

11 PLANT

B - BALTIMORE	MD	L - LANSING	MI	1 - WENTZVILLE	MO
B - LANSING	MI	M - TOLUCA	MEXICO	2 - MORAINÉ	OH
D - DORAVILLE	GA	R - ARLINGTON	TX	3 - KAWASAKI	JAPAN
E - PONTIAC	MI	S - RAMOS ARIZPE	MEXICO	6 - INGERSOLL	ON
F - FLINT	MI	S - SPRINGHILL	TN	6 - OKLAHOMA CITY	OK
G - SILAO	MEXICO	T - SHREVEPORT	LA	7 - FUJISAWA	JAPAN
H - MISHAWAKA	IN	Z - FORT WAYNE	IN	8 - SHREVEPORT	LA
J - JANESVILLE	WI	0 - LANSING	MI	8 - TILLSONBURG	ON
K - LINDEN	NJ	1 - OSHAWA	ON	(IPC)	

The information shown is correct at time of printing, but may be changed during model year.

To obtain additional copies, please fax request to 586-492-0292

General Motors Corporation, Service Operations, 30501 Van Dyke, Warren, MI 48090
Litho in U.S.A. 9/05

©2005 General Motors Corporation. All Rights Reserved.