

Weber State University - Shop Safety Module

Name _____ Date _____ Score _____

Objectives:

After completing this module you will be able to:

- Locate the safety equipment in each shop / lab areas.
- Operate each type of equipment in the shops / lab areas.

Module Importance:

This module will provide you with the understanding that: Shop safety is the most important element of your working life, you can't work if you are hurt. This module will help you understand and insure that your training/work experience will be safe and rewarding.



Safety Glasses



Emergency Exit (Outdoors)



Fire Extinguisher



First Aid Supplies



Exhaust Removal System



Fire Alarm Pull Handle



Emergency Shower and Eye Wash

Automotive Shop Floor Plan

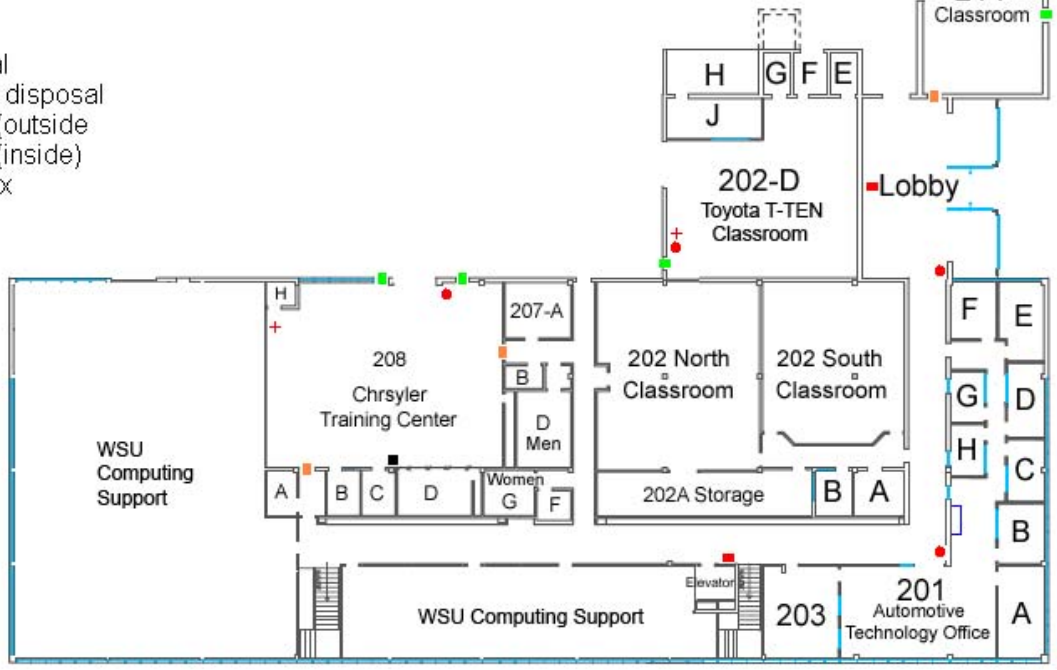


Shop Safety Legend

- Fire extinguisher
- Emergency shower and eye rinse
- Telephone and emergency numbers
- Exhaust system control switch
- + First aid supplies cabinet with eye wash and neutralizer
- Fire alarm pull handle
- Material Safety Data Sheets (MSDS)
- Solvent tank
- Used oil disposal
- Used anti-freeze disposal
- Emergency exit (outside)
- Emergency exit (inside)
- Power switch box

IMPORTANT: In an emergency, call 9-911 on a campus phone or 911 on a cellular phone and then gather everyone at the northwest corner of the A-2 Parking lot

Technical Education Building
 Weber State University
 1504 University Circle - Ogden Utah 84408



Shop Safety Exercise

Instructions: Visit the classrooms and shops assigned to you by your instructor. Supply the missing information in the boxes below. Use the attached shop floor map for approximate locations of items.

Classroom 202-D (Toyota T-TEN)		
Sign	Safety Item Label	Safety Item Location
202-D-1		
202-D-2		
202-D-3		
202-D-4		

Classroom 208 (Chrysler Training Center)		
Sign	Safety Item Label	Safety Item Location
208-1		
208-2		
208-3		
208-4		
208-5		
208-6		
208-7		
208-8		

Classroom 214 (BS Degree)		
Sign	Safety Item Label	Safety Item Location
214-1		
214-2		
214-3		
214-4		

Shop 215 (General Motors Shop)		
Sign	Safety Item Label	Safety Item Location
215-1		
215-2		
215-3		
215-4		
215-5		
215-6		
215-7		
215-8		
215-9		
215-10		
215-11		
215-12		
215-13		
215-14		
215-15		

Shop 216 (Toyota Shop)		
Sign	Safety Item Label	Safety Item Location
216-1		
216-2		
216-3		
216-4		
216-5		
216-6		
216-7		
216-8		
216-9		
216-10		
216-11		
216-12		
216-13		

Shop 217 (Chrysler Shop and Steering & Suspension Lab)		
Sign	Safety Item Label	Safety Item Location
217-1		
217-2		
217-3		
217-4		
217-5		
217-6		
217-7		
217-8		
217-9		
217-10		
217-11		
217-12		
217-13		
217-14		
217-15		
217-16		
217-17		
217-18		
217-19		

Shop 218 (Independent Shop Area and Transmission Lab)		
Sign	Safety Item Label	Safety Item Location
218-1		
218-2		
218-3		
218-4		
218-5		
218-6		
218-7		
218-8		
218-9		
218-10		
218-11		
218-12		
218-13		
218-14		
218-15		
218-16		

Shop 219 (Collision Repair Shop)		
Sign	Safety Item Label	Safety Item Location
219-1		
219-2		
219-3		
219-4		
219-5		
219-6		
219-7		
219-8		
219-9		
219-10		
219-11		
219-12		
219-13		
219-14		
219-15		
219-16		
219-17		
219-18		
219-19		
219-20		
219-21		
219-22		

Where is the Emergency Evacuation Meeting area?
