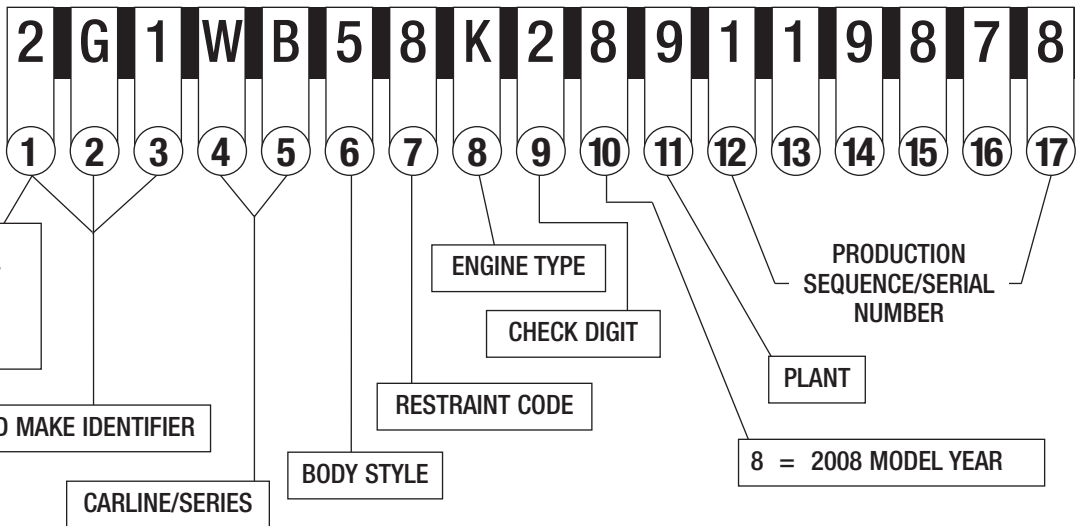




2008 PASSENGER CAR VIN SYSTEM

TYPICAL VIN

POSITION NO.



- 1,5 = U.S. BUILT
- 2 = CANADIAN BUILT
- 3 = MEXICO BUILT
- K = S. KOREA BUILT

WORLD MAKE IDENTIFIER

CARLINE/SERIES

BODY STYLE

RESTRAINT CODE

CHECK DIGIT

ENGINE TYPE

PLANT

PRODUCTION SEQUENCE/SERIAL NUMBER

8 = 2008 MODEL YEAR

1-3 WORLD MAKE IDENTIFIER

1- CHEVROLET

1G1, 2G1, 3G1, KL1

2- PONTIAC

1G2, 2G2, 3G2, 5Y2, KL2

4- BUICK

1G4, 2G4

6- CADILLAC

1G6

8- SATURN

1G8, W08

4-5 CARLINE/SERIES

CHEVROLET

- A/J - COBALT BASE w/AUTO TRANS
- A/K - COBALT 1LS - w/AUTO TRANS
- A/L - COBALT 1LT - w/AUTO TRANS
- A/M - COBALT 2LT - w/AUTO TRANS
- A/P - COBALT 1SP - w/AUTO TRANS
- A/N - COBALT BASE - w/MAN TRANS
- A/R - COBALT 1LS - w/MAN TRANS
- A/T - COBALT 1LT - w/MAN TRANS
- A/W - COBALT 2LT - w/MAN TRANS
- A/U - COBALT 1SP - w/MAN TRANS
- A/S - COBALT SS COUPE
- J/D - OPTRA
- J/K - OPTRA LT
- T/D - AVEO BASE/LS
- T/G - AVEO LT
- W/B - IMPALA LS SEDAN
- W/C - IMPALA 2LT, 3.9L
- W/D - IMPALA SS SEDAN
- W/S - IMPALA POLICE SEDAN
- W/T - IMPALA 1LT 3.5L
- W/U - IMPALA LTZ (RPO STZ)
- W/V - IMPALA 50TH ANIV.
- Y/Y - CORVETTE
- Z/S - MALIBU LS CLASSIC
- Z/T - MALIBU LT CLASSIC
- Z/F - MALIBU BAS HYBRID
- Z/G - MALIBU LS
- Z/H - MALIBU LT
- Z/K - MALIBU LTZ
- Z/J - MALIBU LT

PONTIAC

- A/L - G5 BASE w/AUTO TRANS
- A/N - G5 GT w/MAN TRANS
- A/R - G5 LS w/MAN TRANS
- A/S - G5 GT w/AUTO TRANS
- M/B - SOLSTICE CONVERTIBLE w/MAN TRANS
- M/G - SOLSTICE GXP TURBO CONV. w/MAN TRANS
- M/C - SOLSTICE CONV. w/AUTO TRANS
- M/F - SOLSTICE GXP TURBO CONV. w/AUTO TRANS
- S/L - VIBE, FWD w/AUTO TRANS
- T/D - WAVE LS
- T/W - WAVE LT
- W/C - GRAND PRIX GXP SEDAN
- W/P - GRAND PRIX SEDAN
- Z/F - G6 1SV VALUE LEADER SEDAN
- Z/G - G6 SE1 4-CYL SEDAN
- Z/H - G6 GT COUPE/SEDAN/ CONV.
- Z/M - G6 GXP COUPE/SEDAN
- E/C - G8 BASE 3/6L ENGINE
- E/R - G8 GT 6.0L ENGINE
- T/D - G3 S (MEXICO ONLY)
- T/J - G3 SE (MEXICO ONLY)
- T/M - G3 SX (MEXICO ONLY)

BUICK

- H/D - LUCERNE CXL
- H/P - LUCERNE CX
- H/E - LUCERNE CXS
- H/R - LUCERNE CXL
- W/C - LACROSSE CX
- W/D - LACROSSE CXL
- W/E - LACROSSE CXS
- W/N - LACROSSE SUPER SERIES
- W/F - ALLURE CX (CANADA ONLY)
- W/H - ALLURE CXS (CANADA ONLY)
- W/J - ALLURE CXL (CANADA ONLY)
- W/P - ALLURE SUPER SERIES (CANADA ONLY)

CADILLAC

- D/M - CTS MAN TRANS RWD
- D/F - CTS AUTO TRANS RWD
- D/G - CTS AUTO TRANS AWD
- D/H - CTS AUTO TRANS AWD NAVIGATION
- D/J - CTS AUTO TRANS NAVIGATION
- D/P - CTS MAN TRANS RWD HIGH FEATURE V6
- D/R - CTS AUTO TRANS RWD HIGH FEATURE V6
- D/S - CTS AUTO TRANS AWD HIGH FEATURE V6
- D/T - CTS AUTO TRANS AWD NAVIGATION, HIGH FEATURE V6
- D/V - CTS AUTO TRANS RWD NAVIGATION
- D/C - STS V-8
- D/E - STS L
- D/W - STS RWD
- D/X - STS-V
- D/Y - STS RIGHT HAND DRIVE
- D/A - STS V6 AWD
- D/B - STS V8 AWD
- D/K - STS RWD NAVIGATION SCREEN
- D/D - STS V6 AWD NAVIGATION SCREEN
- D/L - STS V8 AWD NAVIGATION SCREEN
- K/D - DTS
- Y/V - XLR ROADSTER
- Y/X - XLR-V

SATURN

- A/T - ASTRA XR
- A/R - ASTRA XE
- M/B - SKY CONVERTIBLE w/MAN TRANS
- M/G - SKY TURBO CONVERTIBLE w/AUTO TRANS
- M/C - SKY CONVERTIBLE w/AUTO TRANS
- M/F - SKY TURBO CONVERTIBLE w/MAN TRANS
- Z/R - AURA HYBRID
- Z/S - AURA XE
- Z/V - AURA XR

6 BODY STYLE (GM STYLE)

- 1 TWO-DOOR COUPE (27, 37, 47, 57)
- 2 TWO-DOOR (07, 08, 77, 87)
- 3 TWO-DOOR CONVERTIBLE (67)
- 5 FOUR-DOOR SEDAN (19, 69)
- 6 FOUR-DOOR SEDAN (26, 29, 48, 68)
- 7 FOUR-DOOR MPV (06, 46)
- 8 FOUR-DOOR STATION WAGON (35)
- 9 FOUR-DOOR STATION WAGON (75)

7 RESTRAINT CODES

- 1 DRIVER & PASSENGER INFLATABLE RESTRAINT - FRONT
- 2 ACTIVE (MANUAL) BELTS W/DRIVER & PASSENGER INFLATABLE RESTRAINT - FRONT & SIDE
- 3 ACTIVE (MANUAL) BELTS W/DRIVER & PASSENGER INFLATABLE RESTRAINT - FRONT, SIDE & ROOF
- 4 ACTIVE (MANUAL) BELTS W/DRIVER & PASSENGER INFLATABLE RESTRAINT - FRONT & ROOF
- 5 ACTIVE (MANUAL) BELTS W/DRIVER & PASSENGER INFLATABLE RESTRAINT - FRONT W/OCCUPANT SENSOR
- 6 ACTIVE (MANUAL) BELTS W/DRIVER & PASSENGER INFLATABLE RESTRAINT - FRONT AND SIDE & OCCUPANT SENSOR
- 7 ACTIVE (MANUAL) BELTS W/DRIVER & PASSENGER INFLATABLE RESTRAINT - FRONT, SIDE AND ROOF & OCCUPANT SENSOR
- 8 ACTIVE (MANUAL) BELTS W/DRIVER & PASSENGER INFLATABLE RESTRAINT - FRONT AND ROOF & OCCUPANT SENSOR

8 ENGINE TYPE

| CODE | ENG. OPT. | DISP. | CYL. | FUEL* SYSTEM | DIV. USAGE |
|------|-----------|-------|------|--------------|------------|
| A | LH2 | 4.6L | V8 | SFI | 6 |
| B | LE5 | 2.4L | L4 | MFI | 1,2,8 |
| C | LS4 | 5.3L | V8 | SFI | 1,2,4 |
| D | LC3 | 4.4L | V8 | MFI | 1,6 |
| E | LS7 | 7.0L | V8 | SFI | 1 |
| F | L61 | 2.2L | L4 | MFI | 1,2,8 |
| J | LG8 | 3.1L | V6 | SFI | 4 |
| K | LZE | 3.5L | V6 | SFI | 1 |
| L | LBK | 2.5L | L6 | - | 2 |
| M | L95 | 1.4L | L4 | MFI | 1 |
| N | LZ4 | 3.5L | V6 | SFI | 1,2,8 |
| T | LP1 | 2.8L | V6 | SFI | 2,6 |
| V | LLT | 3.6L | V6 | SIDI | 1,6 |
| W | LS3 | 6.2L | V8 | SFI | 1 |
| X | LNF | 2.0L | L4 | DI | 1,2,8 |
| Y | LD8 | 4.6L | V8 | SFI | 2,4,6 |
| Y | L76 | 6.0L | V8 | SFI | 2 |
| Z | L34 | 2.0L | L4 | MFI | 1,2 |
| 1 | LZ9 | 3.9L | V6 | SFI | 1 |
| 1 | 2H0 | 1.8L | L4 | MFI | 8 |
| 2 | L26 | 3.8L | V6 | SFI | 2,4 |
| 3 | LZG | 3.9L | V6 | MFI | 1 |
| 5 | LAT | 2.4L | L4 | MFI | 8 |
| 6 | LXT | 1.6L | L4 | - | 1 |
| 7 | LY7 | 3.6L | V6 | SFI | 1,2,4,6,8 |
| 8 | LV6 | 1.8L | L4 | MFI | 2 |
| 9 | L37 | 4.6L | V8 | SFI | 6 |

*LEGEND

MFI = MULTIPOINT FUEL INJECTION
SFI = SEQUENTIAL FUEL INJECTION

11 PLANT

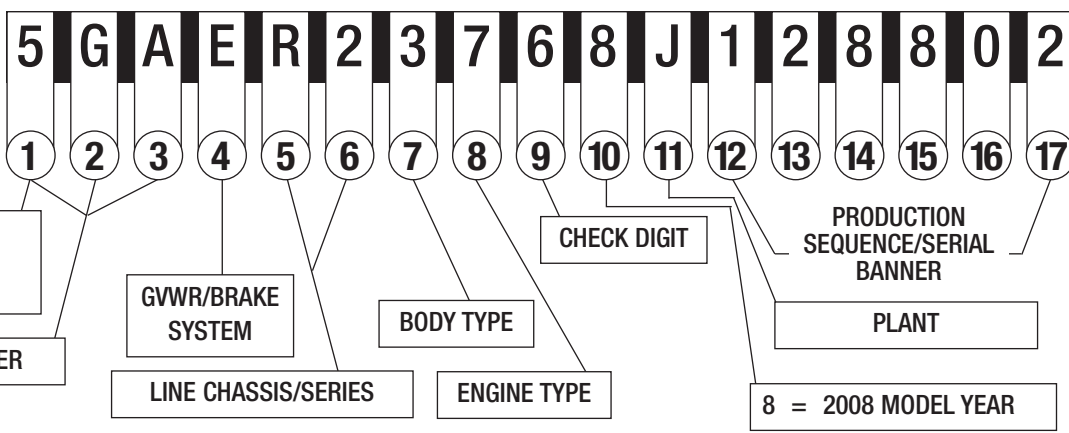
| | | | | | | | |
|----------------|----------|------------------|--------|-------------------|---------|-----------------|----|
| B - LANSING | MI | S - RAMOS ARIZPE | MEXICO | 0 - LANSING | MI | 7 - LORDSTOWN | OH |
| B - BUPYUNG | S. KOREA | U - HAMTRAMCK | MI | 1 - OSHAWA #2 | ON | 8 - TILLSONBURG | ON |
| C - CHANGWON | S. KOREA | Y - WILMINGTON | DE | 4 - ORION | MI | (IPC) | |
| F - FAIRFAX II | KS | Z - FREMONT | CA | 5 - BOWLING GREEN | KY | 9 - OSHAWA #1 | ON |
| K - KUNSAN | S. KOREA | Z - SPRING HILL | TN | 5 - ANTWERP | BELGIUM | | |

2008 LIGHT DUTY TRUCK, MULTIPURPOSE PASSENGER VEHICLE (MPV) AND INCOMPLETE VEHICLE VIN SYSTEM



TYPICAL VIN

POSITION NO.



1, 4, 5 = U.S. BUILT
2 = CANADIAN BUILT
3 = MEXICO BUILT

WORLD MAKE IDENTIFIER

GVWR/BRAKE SYSTEM

BODY TYPE

CHECK DIGIT

PRODUCTION SEQUENCE/SERIAL BANNER

PLANT

LINE CHASSIS/SERIES

ENGINE TYPE

8 = 2008 MODEL YEAR

1-3 WORLD MAKE IDENTIFIER

CHEVROLET

1GB* 2GB* 3GB*
1GC 2GC 3GC
1GA** 1GN 3GN
2CN

GMC

1GD* 2GD* 3GD*
1GT 2GT 3GT
1GJ** 1GK 3GK

BUICK

3G5 4GL* 5GA

SAAB

5S3

SATURN

4NT* 5GZ

CADILLAC

1GE* 1GY 3GY

PONTIAC

1G5* 1GM 2CK 3G7

ISUZU

1GG* 4NU

HUMMER

5GN 5GR 5GT

* Incomplete Vehicle

** Van w/seating exceeding
10 Passengers

4 GVWR/BRAKE SYSTEM

| CODE | GVWR RANGE (IN POUNDS) | BRAKE SYSTEM |
|------|---------------------------|-----------------|
| A | 0 - 3000 | HYD |
| B | 3001 - 4000 | HYD |
| C | 4001 - 5000 | HYD |
| D* | 5001 - 6000 | HYD |
| E** | 6001 - 7000 | HYD |
| F** | 7001 - 8000 | HYD |
| G | 8001 - 9000 | HYD |
| H | 9001 - 10000 | HYD |
| J | 10001 - 14000 | HYD |
| K | 14001 - 16000 | HYD |
| L | 16001 - 19500 | HYD |
| M | 19501 - 26000 | AIR/HYD |

* BUICK & CHEVROLET

COMMERCIAL BODY/CHASSIS

**CADILLAC COMMERCIAL BODY/CHASSIS

5-6 LINE CHASSIS/SERIES

CHEVROLET/GMC

- A/1 HHR LS (1/2 TON) w/AUTO TRANS
- A/2 HHR LT (1/2 TON) w/AUTO TRANS
- A/3 HHR LS w/MAN TRANS
- A/4 HHR 1LT w/MAN TRANS
- A/5 HHR 2LT
- A/6 HHR SS w/AUTO TRANS
- A/7 HHR SS w/MAN TRANS
- A/8 HHR LS PANEL VAN w/AUTO TRANS
- A/9 HHR LS PANEL VAN w/MAN TRANS
- A/0 HHR LT PANEL VAN
- B/9 INCOMPLETE (CHEVROLET)
- C/1 4x2 (1/2 TON) SILVERADO/SIERRA WORK TRUCK, TAHOE/SUBURBAN/AVALANCHE LS, YUKON/YUKON XL SL
- C/2 4x2 (1/2 TON) SILVERADO/TAHOE/SUBURBAN/AVALANCHE LT, SIERRA/YUKON/YUKON XL SLE
- C/3 4x2 (1/2 TON) SILVERADO/TAHOE/SUBURBAN/AVALANCHE LTZ, SIERRA/YUKON XL SLT
- C/4 4x2 (3/4 TON) SILVERADO/SIERRA WORK TRUCK, SUBURBAN LS, YUKON XL SL
- C/5 4x2 (3/4 TON) SILVERADO/SUBURBAN LT, SIERRA/YUKON XL SLE
- C/6 4x2 (3/4 TON) SILVERADO LTZ, SIERRA/YUKON XL SLT
- C/7 4x2 (1 TON) SILVERADO/SIERRA WORK TRUCK
- C/8 4x2 (1 TON) SILVERADO LT, SIERRA SLE
- C/9 4x2 (1 TON) SILVERADO LTZ, SIERRA SLT
- C/0 4x2 (1/2 TON) TAHOE POLICE/SPECIAL SERVICE, SIERRA/YUKON/YUKON XL DENALI
- K/1 4x4 (1/2 TON) SILVERADO/SIERRA WORK TRUCK, TAHOE, SUBURBAN/AVALANCHE LS, YUKON/YUKON XL SL
- K/2 4x4 (1/2 TON) SILVERADO/SUBURBAN/AVALANCHE LT, SIERRA/YUKON/YUKON XL SLE
- K/3 4x4 (1/2 TON) SILVERADO/SUBURBAN/AVALANCHE LTZ, SIERRA/YUKON/YUKON XL SLT
- K/4 4x4 (3/4 TON) SILVERADO/SIERRA WORK TRUCK, SUBURBAN LS, YUKON XL SL
- K/5 4x4 (3/4 TON) SILVERADO/SUBURBAN LT, SIERRA/YUKON XL SLE
- K/6 4x4 (3/4 TON) SILVERADO/SUBURBAN LTZ, SIERRA/YUKON XL SLT
- K/7 4x4 (1 TON) SILVERADO/SIERRA WORK TRUCK
- K/8 4x4 (1 TON) SILVERADO LT, SIERRA SLE
- K/9 4x4 (1 TON) SILVERADO LTZ, SIERRA SLT
- K/0 4x4 (1/2 TON) TAHOE POLICE/SPECIAL SERVICE, SIERRA/YUKON/YUKON XL DENALI

- G/1 4x2 EXPRESS/SAVANA 4x2 1500 (1/2 TON)
- G/2 4x2 EXPRESS/SAVANA 4x2 2500 (3/4 TON)
- G/3 EXPRESS/SAVANA 4x2 3500 (1 TON)
- G/4 EXPRESS LT 4x2 (1/2 TON)
- G/5 EXPRESS LT 4x2 (3/4 TON)
- G/6 EXPRESS LT 4x2 (1 TON)
- H/1 EXPRESS/SAVANA AWD 1500 (1/2 TON)
- H/2 EXPRESS LT AWD (1/2 TON)
- L/1 EQUINOX LS FWD
- L/2 EQUINOX 1LS AWD
- L/3 EQUINOX 1LT FWD
- L/4 EQUINOX 1LT AWD
- L/5 EQUINOX 2LT FWD
- L/6 EQUINOX 2LT AWD
- L/7 EQUINOX LTZ FWD
- L/8 EQUINOX LTZ AWD
- L/9 EQUINOX SPORT FWD
- L/0 EQUINOX SPORT AWD
- S/1 4x2 (1/2 TON) CANYON/COLORADO WORK TRUCK, TRAILBLAZER LS FLEET SERVICE, ENVOY FLEET VEHICLE
- S/2 4x2 (1/2 TON) CANYON SL, COLORADO LS, TRAILBLAZER LT, ENVOY SLE
- S/3 4x2 (1/2 TON) CANYON SLE, COLORADO LT1, TRAILBLAZER SS, ENVOY SLT
- S/4 4x2 (1/2 TON) CANYON SLT, COLORADO LTZ, ENVOY DENALI
- S/5 4x2 (1/2 TON) COLORADO LT3
- T/1 4x4 (1/2 TON) CANYON/COLORADO WORK TRUCK, TRAILBLAZER LS FLEET SERVICE, ENVOY FLEET VEHICLE
- T/2 4x4 (1/2 TON) CANYON SL, COLORADO LS, TRAILBLAZER LT, ENVOY SLE
- T/3 4x4 (1/2 TON) CANYON SLE, COLORADO LT1, TRAILBLAZER SS, ENVOY SLT
- T/4 4x4 (1/2 TON) CANYON SLT, COLORADO LT2, ENVOY DENALI
- R/1 ACADIA SLE FWD (1/2 TON)
- R/2 ACADIA SLT (1) FWD (1/2 TON)
- R/3 ACADIA SLT (2) FWD (1/2 TON)
- U/0 UPLANDER APV 4x2 RWB (1/2 TON) BASE
- U/2 UPLANDER LS APV 4x2 RWB (1/2 TON)

- U/3 UPLANDER LT APV 4x2 RWB (1/2 TON)
- V/0 UPLANDER EWB APV 4x2 (1/2 TON) BASE
- V/1 ACADIA SLE AWD, UPLANDER EWB, CARGO/MOBILITY APV (1/2 TON)
- V/2 ACADIA SLT (1) AWD, UPLANDER EWB, LS APV (1/2 TON)
- V/3 ACADIA SLT (2) AWD, UPLANDER EWB, LT APV (1/2 TON)

BUICK

- R/1 ENCLAVE CX FWD (1/2 TON)
- R/2 ENCLAVE CXL FWD (1/2 TON)
- R/3 ENCLAVE SPECIAL EDITION FWD (1/2 TON)
- V/1 ENCLAVE CX AWD (1/2 TON)
- V/2 ENCLAVE CXL AWD (1/2 TON)
- V/3 ENCLAVE SPECIAL EDITION AWD (1/2 TON)

CADILLAC

- K/0 INCOMPLETE HEARSE (DTS)
- K/9 INCOMPLETE LIMOUSINE (DTS)
- E/2 SRX RWD V8
- E/3 SRX RWD V6 RIGHT HAND DRIVE
- E/4 SRX AWD V6
- E/5 SRX AWD V8
- E/6 SRX RWD V6
- C/6 ESCALADE 4x2 1500 (1/2 TON) LUXURY
- K/4 ESCALADE/ESCALADE ESV/ESCALADE EXT PLATINUM
- K/7 ESCALADE ARMOR PACKAGE (3/4 TON)

PONTIAC

- L/3 TORRENT FWD (1/2 TON)
- L/4 TORRENT AWD (1/2 TON)
- L/5 TORRENT GXP FWD (1/2 TON)
- L/7 TORRENT GXP AWD (1/2 TON)
- U/0 MONTANA SV6 RWB 4x2 (1/2 TON) BASE U.S. (CANADA SAU1, MEXICO 1SB)
- U/2 MONTANA SV6 RWB 4x2 (1/2 TON)-U.S. (CANADA SAU2, MEXICO 1SC)
- U/3 MONTANA SV6 RWB 4x2 (1/2 TON)-U.S. (CANADA SAU3, MEXICO 1SE)
- V/0 MONTANA SV6 EWB, 4x2 (1/2 TON) BASE (CANADA 1SA, MEXICO 1SB)
- V/1 MONTANA SV6 EWB, MOBILITY INCOMPLETE (1/2 TON)
- V/2 MONTANA SV6 EWB (1/2 TON)-U.S. (CANADA 1SB, MEXICO 1SC)
- V/3 MONTANA SV6 EWB (1/2 TON)-U.S. (CANADA 1SC, MEXICO 1SE)

SATURN

- L/1 VUE RED LINE FWD
- L/3 VUE XE FWD
- K.4 VUE XE AWD
- L/5 VUE XR FWD
- L/7 VUE XR AWD
- L/9 VUE RED LINE AWD
- L/0 VUE GREEN LINE (BAS HYBRID) FWD
- R/1 OUTLOOK XE FWD (1/2 TON)
- R/2 OUTLOOK XR FWD (1/2 TON)
- R/3 OUTLOOK XR-TOURING FWD (1/2 TON)
- V/1 OUTLOOK XE AWD (1/2 TON)
- V/2 OUTLOOK XR AWD (1/2 TON)
- V/3 OUTLOOK XR-TOURING AWD (1/2 TON)

HUMMER

- N/2 H2 4x4 (3/4 TON) BASE MODEL
- N/7 H2 4x4 (3/4 TON) ADVENTURE MODEL
- N/8 H2 4x4 (3/4 TON) LUXURY MODEL
- N/9 H2 4x4 (3/4 TON) SUT BASE/ADVENTURE MODELS
- N/0 H2 4x4 (3/4 TON) SUT LUXURY MODEL
- N/1 H3 4x4 (1/2 TON) BASE
- N/3 H3 4x4 (1/2 TON) ADVENTURE MODEL
- N/4 H3 4x4 (1/2 TON) LUXURY MODEL
- N/5 H3-X 4x4 (1/2 TON)
- N/6 H3 4x4 (1/2 TON) ALPHA EDITION

ISUZU

- S/1 ASCENDER 4x2 (1/2 TON)
- T/1 ASCENDER 4x4 (1/2 TON)

SAAB

- T/1 SAAB 9-7X SUV
- T/2 SAAB 9-7X AERO



2008 LIGHT DUTY TRUCK, MULTIPURPOSE PASSENGER VEHICLE (MPV) AND INCOMPLETE VEHICLE VIN SYSTEM

7 BODY TYPE

- 0 – COMMERCIAL CHASSIS/VEHICLE**
(CHEVROLET/BUICK/CADILLAC)
- 1 – COMMERCIAL SPECIAL AND RV CUTAWAY**
(INCLUDES CHEVROLET EXPRESS COMMERCIAL, & RV CUTAWAY
GMC SAVANA CARGO SPECIAL AND CAMPER SPECIAL)
- 2 – SPORT UTILITY TRUCK**
(AVALANCHE, ESCALADE EXT, ESCALADE EXT PLATINUM, H2 SUT)
- 3 – FOUR-DOOR CAB/UTILITY**
(INCLUDES TRAILBLAZER, ENVOY, EQUINOX, TORRENT, YUKON, TAHOE,
DENALI, ESCALADE, ESCALADE PLATINUM, H2 AND CREW CAB, H3,
ACADIA, ENCLAVE, OUTLOOK, SAAB 9-7)
- 3 – FOUR-DOOR ALL PURPOSE VEHICLE**
(MONTANA SV6, UPLANDER, VUE, SRX, HHR)
- 4. – TWO-DOOR CAB**
(COLORADO, CANYON, SIERRA, SILVERADO)
- 5 – VAN**
(EXPRESS, SAVANA, HHR PANEL TRUCK)
- 6 – SUBURBAN, YUKON XL, DENALI XL, ASCENDER, ESCALADE ESV,
ESCALADE ESV PLATINUM**
- 7 – MOTOR HOME CHASSIS**
- 8 – TWO-DOOR UTILITY (NO CURRENT USAGE)**
- 9 – EXTENDED CAB/EXTENDED VAN**
(COLORADO, CANYON, SIERRA, SILVERADO, EXPRESS AND
SAVANA)

8 ENGINE TYPE

| CODE | ENG. OPT. | DISP. | CYL. | FUEL SYSTEM** |
|------|-----------|-------|------|---------------|
| A | LH2 | 4.6L | V8 | SFI |
| B | L33 | 5.3L | V8 | SFI |
| C | LY2 | 4.8L | V8 | SFI |
| D | L61 | 2.2L | L4 | MFI |
| E | LLR | 3.7L | L5 | - |
| F | LNJ | 3.4L | V6 | SFI |
| G | L18 | 8.1L | V8 | MFI |
| H | LS2 | 6.0L | V8 | SFI |
| J | LY5 | 5.3L | V8 | SFI |
| K | LY6 | 6.0L | V8 | SFI |
| L | LH8 | 5.3L | V8 | SFI |
| M | LH6 | 5.3L | V8 | SFI |
| N | LZ4 | 3.5L | V6 | SFI |
| P | LE5 | 2.4L | L4 | MFI |
| R | L31 | 5.7L | V8 | CPI |
| S | LL8 | 4.2L | L6 | MFI |
| U | LQ4 | 6.0L | V8 | MFI |
| W | LGD | 3.9L | V6 | SFI |
| X | LNF | 2.0L | L4 | DSL |
| X | LU3 | 4.3L | V6 | MFI |
| Y | L76 | 6.0L | V8 | SFI |
| Y* | LD8 | 4.6L | V8 | MFI |
| Z | LAT | 2.4L | L4 | MFI |
| 1 | LZ9 | 3.9L | V6 | SFI |
| 3 | LC9 | 5.3L | V8 | SFI |
| 4 | LMF | 5.3L | V8 | SFI |
| 5 | LFA | 6.0L | V8 | SFI |
| 6 | LMM | 6.6L | V8 | DPI |
| 7 | LY7 | 3.6L | V6 | SFI |
| 8 | L92 | 6.2L | V8 | SFI |
| 9 | LLV | 2.9L | L4 | - |
| 9* | L37 | 4.6L | V8 | MFI |
| 0 | LMG | 5.3L | V8 | SFI |

* USED ONLY IN BUICK, CHEVROLET & CADILLAC PASSENGER CAR – DERIVED INCOMPLETE VEHICLES

** DSL = DIESEL, MFI = MULTIPOINT FUEL INJECTION. CPI = CENTRAL PORT INJECTION, T = TURBO SFI = SEQUENTIAL FUEL INJECTION

11 PLANT

| | | | | | |
|-----------------------|-----------|-------------------------|--------|--------------------------|-------|
| A - STRUANDALE | S. AFRICA | R - ARLINGTON | TX | 3 - KAWASAKI | JAPAN |
| D - DORAVILLE | GA | S - RAMOS ARIZPE | MEXICO | 6 - INGERSOLL | ON |
| E - PONTIAC | MI | S - SPRINGHILL | TN | 6 - OKLAHOMA CITY | OK |
| F - FLINT | MI | T - SHREVEPORT | LA | 7 - FUJISAWA | JAPAN |
| G - SILAO | MEXICO | Z - FORT WAYNE | IN | 8 - SHREVEPORT | LA |
| H - MISHAWAKA | IN | 0 - LANSING | MI | 8 - TILLSONBURG | ON |
| J - JANESVILLE | WI | 1 - OSHAWA | ON | (IPC) | |
| J - LANSING | MI | 1 - WENTZVILLE | MO | | |
| M - TOLUCA | MEXICO | 2 - MORAINÉ | OH | | |



2008 MEDIUM DUTY TRUCK AND INCOMPLETE VEHICLE VIN SYSTEM

TYPICAL VIN

POSITION NO.

1, 4 = U.S. BUILT
2 = CANADIAN BUILT
J = JAPAN BUILT

WORLD MAKE IDENTIFIER

SERIES

GVWR/BRAKE SYSTEM

TRUCK LINE & CAB TYPE

CHASSIS TYPE

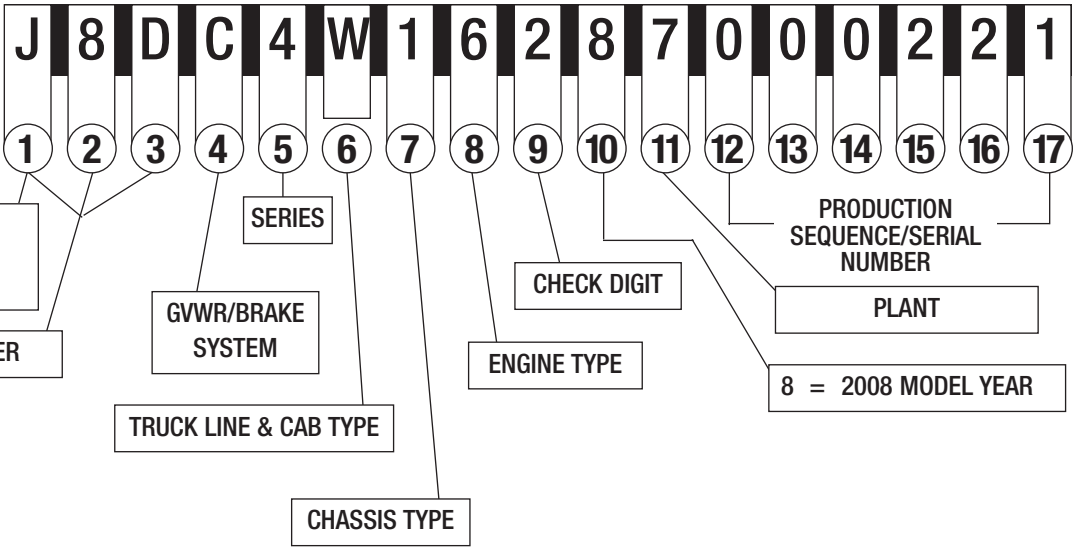
CHECK DIGIT

ENGINE TYPE

PRODUCTION SEQUENCE/SERIAL NUMBER

PLANT

8 = 2008 MODEL YEAR



1-3 WORLD MAKE IDENTIFIER

-CHEVROLET

1GC 2GC
1GB* 2GB*
4KB* J8B*

-GMC

1GT 2GT
1GD* 2GD*
4KD* J8D*

-ISUZU

4GT* 4KL JAL

* Incomplete Vehicle

5 SERIES

4 – 4500 SERIES (C4/W4)

5 – 5500 SERIES (C5/W5)

6 – 6500 SERIES (C6(H6*)/T6F)

7 – 7500 SERIES (B7/C7(H7*)/D7/T7F/W7)

8 – 8500 SERIES (C8(H8*)/T8F)

* H6, H7, H8 ARE IDENTIFIERS FOR C6, C7, C8 MODELS W/ISUZU NAMEPLATE CONVERSION OPTION Z89.

6 TRUCK LINE & CAB TYPE (MODEL)

A – FORWARD/TILTMMASTER MEDIUM, TILT, 72.0 BBC (W5)

W – FORWARD/TILTMMASTER MEDIUM, TILT, 71.0 BBC (W4)

E – C SERIES, CREW CAB (C4E – C8E)

C – C SERIES, CONVENTIONAL CAB (C4C – C8C)

V – C SERIES, CUTAWAY COMMERCIAL CAB (C4V – C8V)

U – C SERIES, CUTAWAY MOTORHOME (C4U/C5U)

J – W SERIES NPR/NPQ NON-TILT CAB, 110.0 BBC (W4/W5)

F – T SERIES TILT CAB, 86.0 BBC (T6F – T8F)

BBC = BUMPER TO BACK OF CAB

4 GVWR/BRAKE SYSTEM

| CODE | GVWR RANGE (IN POUNDS) | BRAKE SYST. |
|------|---------------------------|-------------|
| A | 9001 - 10,000 | HYD |
| B | 10,001 - 14,000 | HYD |
| C | 14,001 - 16,000 | HYD |
| D | 14,001 - 16,000 | AIR |
| E | 16,001 - 19,500 | HYD |
| F | 16,001 - 19,500 | AIR |
| G | 19,501 - 23,500 | HYD |
| H | 19,501 - 23,500 | AIR |
| J | 23,501 - 26,000 | HYD |
| K | 23,501 - 26,000 | AIR |
| L | 26,001 - 33,000 | HYD |
| M | 26,001 - 33,000 | AIR |
| N | 33,001 - 40,500 | HYD |
| P | 33,001 - 40,500 | AIR |
| R | 40,501 - 48,500 | HYD |
| S | 40,501 - 48,500 | AIR |
| T | 48,501 - 58,000 | AIR |
| V | 58,001 - 69,500 | AIR |
| X | GLIDER KIT | — |

7 CHASSIS TYPE

0 – GLIDER KIT

1 – 4 X 2 (2 AXLES - 1 DRIVING)

3 – 4 X 4 (2 AXLES - 2 DRIVING)

4 – 6 X 4 (3 AXLES - 2 DRIVING)

8 ENGINE TYPE

A – GM/CAT 7.2L L6 DI CCV DPF (LF6)

B – ISUZU 7.8L L6 DI TURBO DPF (LF8)

C – CAT 7.2L L6 TURBO ELECTRONIC (LG5)

G – GM 8.1L V8 MFI GASOLINE (L18)

N – GM 6.0L V8 SFI GASOLINE (LY6)

X – GLIDER KIT LESS ENGINE

4* – ISUZU 4.75L L4 4HE1-XS I/C TURBO DIESEL (1C3)

5* – ISUZU 4.75L L4 4HE1-XN I/C TURBO DIESEL (1C2)

6* – ISUZU 5.2L L4 I/C TURBO DIESEL (1L5)

9 – GM 6.6L V8 DIESEL DPI (LMM)

* CODES 4, 5 AND 6 ARE FOR ISUZU/GM ENGINES USED BY ISUZU/GM ORDERED VEHICLES BUILT BY ISUZU

The information shown is correct at time of printing, but may be changed during model year.

To obtain additional copies, please fax request to 586-492-0292

General Motors Corporation, Service Operations, 30501 Van Dyke, Warren, MI 48090

Litho in U.S.A. 9/07

©2007 General Motors Corporation. All Rights Reserved.

Part # 08VINCARD